

HQI-TS 250 W/NDL UVS

POWERSTAR HQI-TS | Metal halide lamps with quartz technology for enclosed luminaires



Areas of application

- Foyers, reception areas
- Factory and hall lighting with low-cost installations
- Exhibition halls and trade fairs
- Sports halls and multi-purpose halls
- Pedestrian zones, public squares
- Parks and gardens
- Buildings, monuments, bridges
- Approved only for use in enclosed luminaires
- Outdoor applications only in suitable luminaires

Product benefits

- High efficiency
- Uniform distribution of light
- Good to excellent color rendering
- Long lifetime
- Hot restrike capable
- UV values significantly below the maximum permitted thresholds to IEC 61167 thanks to UV filter

Product features

- POWERSTAR quartz technology
- Light colors: warm white (WDL), neutral white (NDL), daylight (D)



Product datasheet

Technical data

Electrical data

Nominal wattage	250.00 W
Rated wattage	250.00 W
Lamp current	3.0 A
PFC capacitor at 50 Hz	32 μ F ¹⁾
Nominal voltage	98.0 V
Ignition voltage	4.0 / 25 kVp ²⁾
Rated lamp efficacy (standard condition)	80 lm/W

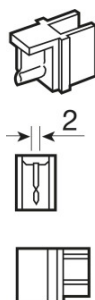
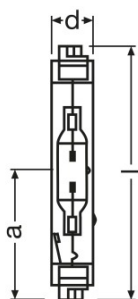
¹⁾ At rated voltage and $\cos \phi \geq 0.9$

²⁾ Minimum / Maximum

Photometrical data

Rated luminous flux	20000 lm
Color rendering index Ra	88
Color temperature	4200 K
Light color	842
Rated LLMF at 2,000 h	0.80
Rated LLMF at 4,000 h	0.75
Rated LLMF at 6,000 h	0.65
Rated LLMF at 8,000 h	0.55
Rated LLMF at 12,000 h	0.50
UV protection	Yes

Dimensions & weight



Diameter	25.0 mm
Length	162.0 mm
Light center length (LCL)	81.0 mm

Product datasheet

Product weight	52.00 g
----------------	---------

Temperatures & operating conditions

Maximum permitted outer bulb temperature	650 °C
Maximum permitted pinch temperature	300 °C

Lifespan

Rated lamp survival factor at 2,000 h	0.95
Rated lamp survival factor at 4,000 h	0.90
Rated lamp survival factor at 6,000 h	0.85
Rated lamp survival factor at 8,000 h	0.80
Rated lamp survival factor at 12,000 h	0.50
Lifespan B50	12000 h

Additional product data

Base (standard designation)	Fc2
Design / version	Clear
Lamp mercury content	14.0 mg

Capabilities

Dimmable	No
Burning position	p45
Enclosed luminaire required	Yes
Hot restart	Yes

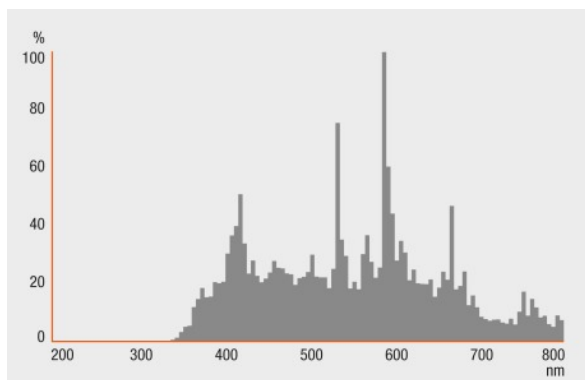
Certificates & standards

Energy efficiency class	A
Energy consumption	275 kWh/1000h

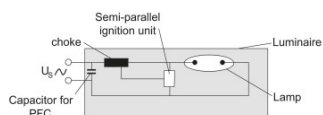
Country specific categorizations

ILCOS	MD/UB-250/842-H/E/SL-Fc2-25/162/H
-------	-----------------------------------

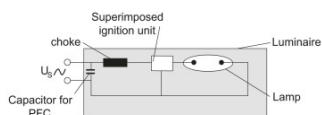
Light Distribution



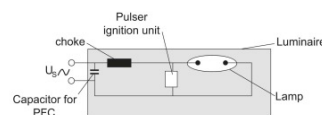
Spectral power distribution



Circuit diagram



Circuit diagram



Circuit diagram

Logistical Data

Product code	Product description	Packaging unit (Pieces/Unit)	Dimensions (length x width x height)	Volume	Gross weight
4008321689153	HQI-TS 250 W/NDL UVS	Shipping carton box 12	216 mm x 166 mm x 272 mm	9.75 dm ³	984.00 g
4008321766878	HQI-TS 250 W/NDL UVS	Shipping carton box 12	216 mm x 166 mm x 272 mm	9.75 dm ³	984.00 g

Product datasheet

The mentioned product code describes the smallest quantity unit which can be ordered. One shipping unit can contain one or more single products. When placing an order, for the quantity please enter single or multiples of a shipping unit.

Disclaimer

Subject to change without notice. Errors and omission excepted. Always make sure to use the most recent release.