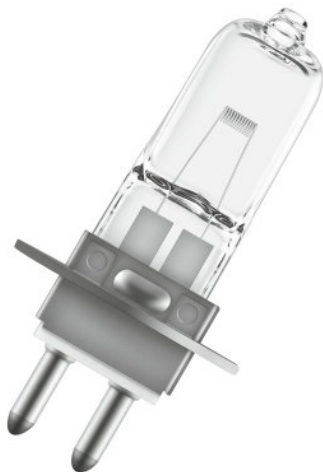


## 64251 HLX

Low-voltage halogen lamps without reflector



### Areas of application

- Lamps for special luminaires
- Medical fiber optics (HLX)

### Product family benefits

- Compared to standard lamps up to 10 % higher luminous efficacy (HLX)
- Instant light (HLX)

### Product family features

- Xenon instead of krypton as the filler gas (XENOPHOT HLX versions)
- Luminous flux up to 10 % higher with same power consumption (XENOPHOT HLX versions)
- HLX tungsten halogen low-voltage lamp with or without reflector
- Dimmable (HLX)



# Product datasheet

## Technical data

### Product information

|                 |           |
|-----------------|-----------|
| Order reference | 64251 HLX |
|-----------------|-----------|

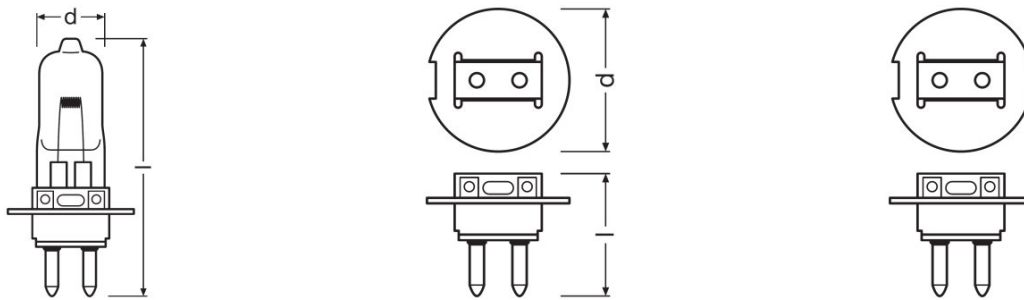
### Electrical data

|                 |         |
|-----------------|---------|
| Nominal voltage | 6 V     |
| Nominal wattage | 20.00 W |

### Photometrical data

|                       |        |
|-----------------------|--------|
| Color temperature     | 3350 K |
| Nominal luminous flux | 460 lm |

### Dimensions & weight



|                           |                         |
|---------------------------|-------------------------|
| Diameter                  | 9 mm                    |
| Length                    | 40.0 mm                 |
| Light center length (LCL) | 14.0 mm                 |
| Filament length           | 2.30 mm                 |
| Illuminated field         | 2.3*0.8 mm <sup>2</sup> |
| Filament diameter         | 0.5 mm                  |

### Lifespan

|          |       |
|----------|-------|
| Lifespan | 100 h |
|----------|-------|

### Additional product data

|                                    |      |
|------------------------------------|------|
| Base (standard designation)        | PG22 |
| Minimum diameter of lamp enclosure | 9 mm |

### Capabilities

## Product datasheet

|                         |       |
|-------------------------|-------|
| <b>Dimmable</b>         | Yes   |
| <b>Burning position</b> | Any   |
| <b>Application</b>      | Other |

### Certificates & standards

|                           |   |
|---------------------------|---|
| <b>EEI – Energy Label</b> | B |
|---------------------------|---|

### Country specific categorizations

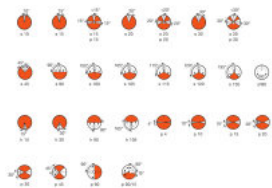
|                        |           |
|------------------------|-----------|
| <b>Order reference</b> | 64251 HLX |
|------------------------|-----------|

---

### Country specific information

| <b>Product code</b> | <b>METEL code</b> | <b>SEG-No.</b> | <b>STK-Number</b> | <b>UK Org</b> |
|---------------------|-------------------|----------------|-------------------|---------------|
| 4050300338316       | OSRH64251HLX      | -              | -                 | -             |
| 4050300338316       | OSRH64251HLX      | -              | -                 | -             |

## Product datasheet



### Logistical Data

| Product code  | Product description | Packaging unit (Pieces/Unit) | Dimensions (length x width x height) | Volume               | Gross weight |
|---------------|---------------------|------------------------------|--------------------------------------|----------------------|--------------|
| 4050300338316 | 64251 HLX           | Folding carton box<br>1      | 70 mm x 23 mm x<br>25 mm             | 0.04 dm <sup>3</sup> | 5.00 g       |
| 4050300338330 | 64251 HLX           | Shipping carton box<br>30    | 158 mm x 81 mm x<br>131 mm           | 1.68 dm <sup>3</sup> | 313.00 g     |

The mentioned product code describes the smallest quantity unit which can be ordered. One shipping unit can contain one or more single products. When placing an order, for the quantity please enter single or multiples of a shipping unit.

### Disclaimer

Subject to change without notice. Errors and omission excepted. Always make sure to use the most recent release.