

# The new GES9-3 service outlet

Now with two cover versions and simplified mounting

## Simple to mount

The installation into the mounting opening in the floor is now even easier. There are universal fastening brackets on the carpet protection frame of the GES9-3 service outlet which are fixed inwards when delivered. When the screws are tightened they pivot outwards and fasten the carpet protection frame in the floor. There is no need for the fitter to align the fastening brackets themselves anymore.



ACKERMANN  
MADE BY OBO



## Equipping

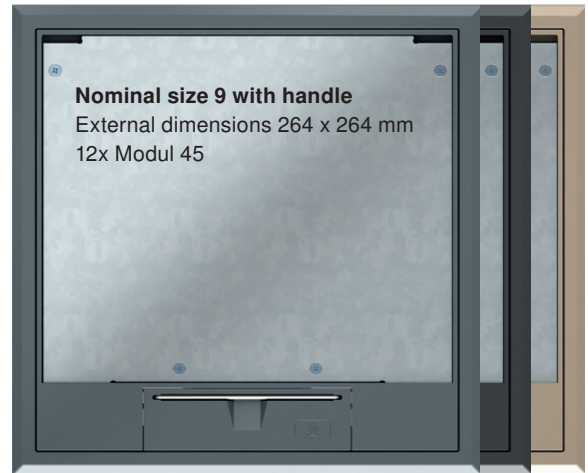
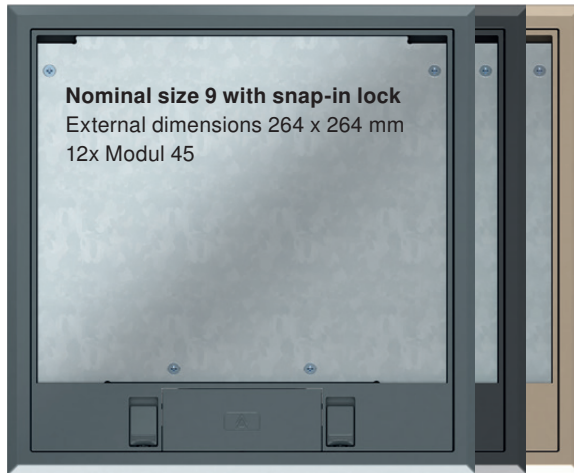
The Modul 45 system has established itself as a standard for electrical installations in underfloor systems. The system offers a wide range of installation solutions for power, data and multimedia equipment that take place in universal supports and mounting boxes.



# This is what we call diversity.

GES service outlets offer solutions for dry-cleaned floor coverings such as carpets, PVC, linoleum, parquet flooring and laminate. With a colour range of iron grey,

graphite black and grey-beige the service outlets with two cover variants can be installed discretely into the floor covering.



## GES9-3B service outlet with handle

Type	Colour	Pack.	Pack. kg/100 pcs.	Item No.
GES9-3B U 7011	Iron grey	1	205,000	7405 07 7
GES9-3B U 9011	Graphite black	1	205,000	7405 07 9
GES9-3B U 1019	Grey-beige	1	205,000	7405 08 1

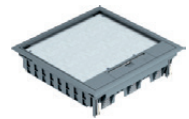
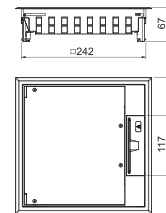
PC/ABS Polycarbonate acrylonitrile butadiene styrene

€/pc.

Service outlet with handle for up to 12 Modul 45 individual devices in three UT4 universal supports, application in trunking systems and system floors.

Floor covering recess in the hinged cover preset at 5 mm, can be adjusted to 10 mm if required.

Up to 9 installation devices can be installed with a 50 x 50 mm central plate.



## GES9-3S service outlet with snap-in lock

Type	Colour	Pack.	Pack. kg/100 pcs.	Item No.
GES9-3S U 7011	Iron grey	1	199,500	7405 08 3
GES9-3S U 9011	Graphite black	1	199,500	7405 08 5
GES9-3S U 1019	Grey-beige	1	199,500	7405 08 7

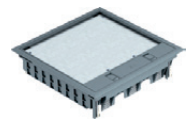
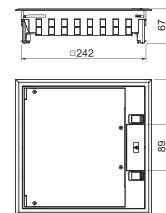
PC/ABS Polycarbonate acrylonitrile butadiene styrene

€/pc.

Service outlet with handle for up to 12 Modul 45 individual devices in three UT4 universal supports, application in trunking systems and system floors.

Floor covering recess in the hinged cover preset at 5 mm, can be adjusted to 10 mm if required.

Up to 9 installation devices can be installed with a 50 x 50 mm central plate.



OBO Bettermann GmbH & Co. KG  
PO Box 1120  
58694 Menden

Customer Service Germany  
Tel. +49 (0)2373 89-1700  
Fax +49 (0)2373 89-1238  
E-mail: [export@obo.de](mailto:export@obo.de)  
[www.obo-bettermann.com](http://www.obo-bettermann.com)

