



LED LAMPS AND COMPONENTS

332

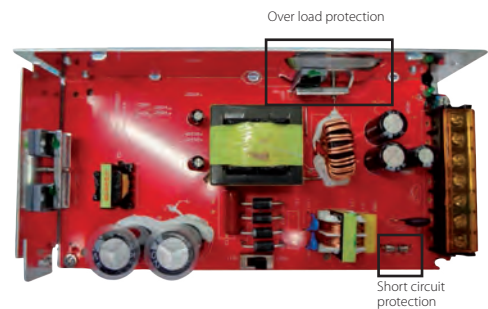
# LED STRIPS

LED Modules

**Drivers features:**

- Easy installation
- Low consumption
- Strong compatibility
- Compliance to worldwide safety regulations for lighting
- Certificate: CE, ROHS, EMC, LVD
- Type: constant current ( CC/IC )
- Structure: isolated

- International broad voltage AC input
- Protection: short-circuit, overload, overheat
- Natural air cooled
- 100% full-load aged
- Working temperature up to 65°C
- High efficiency, long life span, and high reliability





### L3528 LED MODULE

A++ A IP 67 RoHS COMPLIANT CE

Watt	LEDs (pcs)	LED Type	Colour temp. (K)	Size (mm)			Catalogue number	Packing (pcs)
				Length	Width	Height		
0,36W	3	SMD3528	5500	78	14	7.5	99LED359	1



**3** YEAR WARRANTY



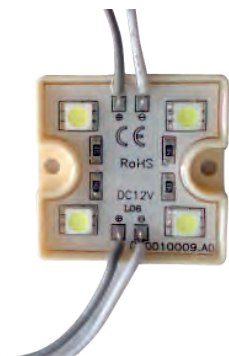
### L5050 LED MODULE

A++ A IP 67 RoHS COMPLIANT CE

Watt	LEDs (pcs)	LED Type	Colour temp. (K)	Size (mm)			Catalogue number	Packing (pcs)
				Length	Width	Height		
0,72W	3	SMD5050	5500	78	14	7.5	99LED360	1



**3** YEAR WARRANTY



### S5050 LED MODULE

A++ A IP 67 RoHS COMPLIANT CE

Watt	LEDs (pcs)	LED Type	Colour temp. (K)	Size (mm)			Catalogue number	Packing (pcs)
				Length	Width	Height		
1,5W	4	SMD5050	5500	36	36	6	99LED361	1



**3** YEAR WARRANTY

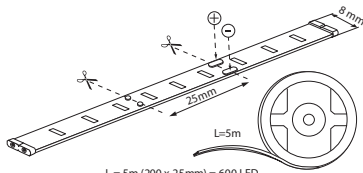


**LED 600 - IP20**



Model	LEDs (pcs/m)	Watts / meter	Colour temp. (K)	Colour	Catalogue number	Packing (reel)
LED-3528-120-WW	120pcs/m	9,6W/m	2700-3000	warm white	<b>99LED666</b>	1
LED-3528-120-CW	120pcs/m	9,6W/m	6200-6500	cold white	<b>99LED667</b>	1

Luminous efficiency: 6-7Lm/LED, 8mm Flex white PCB, with 3M adhere attached, mark cut.

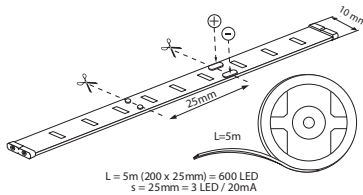


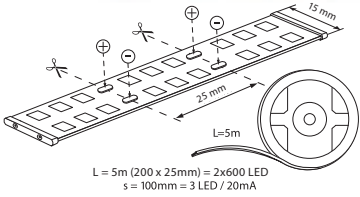
**LED 600 - IP65**



Model	LEDs (pcs/m)	Watts / meter	Colour temp. (K)	Colour	Catalogue number	Packing (reel)
LED-3528-120-WW	120pcs/m	9,6W/m	2700-3000	warm white	<b>99LED668</b>	1
LED-3528-120-CW	120pcs/m	9,6W/m	6200-6500	cold white	<b>99LED669</b>	1

Luminous efficiency: 6-7Lm/LED, 8mm Flex white PCB, hollow tube waterproof IP65, with 3M adhere attached, mark cut.





### LED 1200 - IP20

A++ A IP 20 RoHS CE

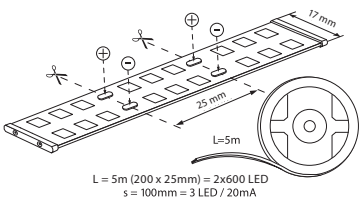
Model	LEDs (pcs/m)	Watts / meter	Colour temp. (K)	Colour	Catalogue number	Packing (reel)
LED-3528-2X120-WW	2X120pcs/m	20W/m	2700-3000	warm white	<b>99LED684</b>	1
LED-3528-2X120-CW	2X120pcs/m	20W/m	6200-6500	cold white	<b>99LED685</b>	1

Luminous efficiency: 6-7Lm/LED, 15mm Flex white PCB, with 3M adhere attached, mark cut.



12V DC SMD 3528 REEL 5m 120° 30000h Hg

**3** YEAR WARRANTY



### LED 1200 - IP65

A++ A IP 65 RoHS CE

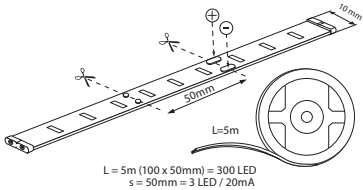
Model	LEDs (pcs/m)	Watts / meter	Colour temp. (K)	Colour	Catalogue number	Packing (reel)
LED-3528-2X120-WW	2X120pcs/m	20W/m	2700-3000	warm white	<b>99LED686</b>	1
LED-3528-2X120-CW	2X120pcs/m	20W/m	6200-6500	cold white	<b>99LED687</b>	1

Luminous efficiency: 6-7Lm/LED, 17mm Flex white PCB hollow tube waterproof IP65, with 3M adhere attached, mark cut.



12V DC SMD 3528 REEL 5m 120° 30000h Hg

**3** YEAR WARRANTY

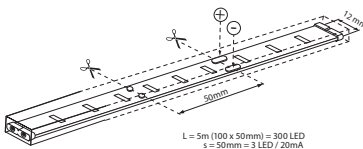
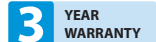
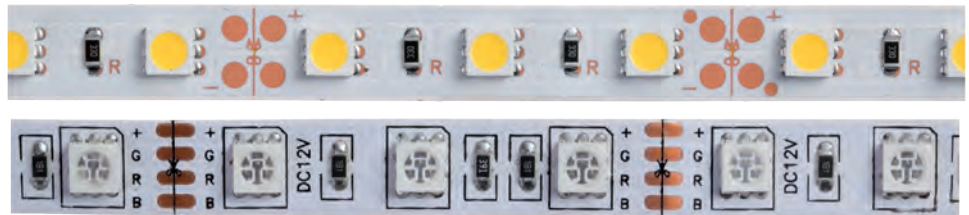


**LED 300 - IP20**



Model	LEDs (pcs/m)	Watts / meter	Colour temp. (K)	Colour	Catalogue number	Packing (reel)
LED-5050-60-WW	60pcs/m	14.4W/m	2700~3000	warm white	<b>99LED670</b>	1
LED-5050-60-CW	60pcs/m	14.4W/m	6200~6500	cold white	<b>99LED671</b>	1
LED-5050-60-Y	60pcs/m	14.4W/m	587-592	yellow	<b>99LED672</b>	1
LED-5050-60-G	60pcs/m	14.4W/m	520-525	green	<b>99LED673</b>	1
LED-5050-60-B	60pcs/m	14.4W/m	465-470	blue	<b>99LED674</b>	1
LED-5050-60-R	60pcs/m	14.4W/m	620-630	red	<b>99LED675</b>	1
LED-5050-60-RGB*	60pcs/m	14.4W/m	-	RGB	<b>99LED676</b>	1

Note: \*RGB controller suitable for RGB LED strip control could be found on page 342/343  
Luminous efficiency: 18-20Lm/LED, 10mm Flex white PCB, with 3M adhere attached, mark cut.

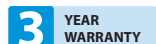
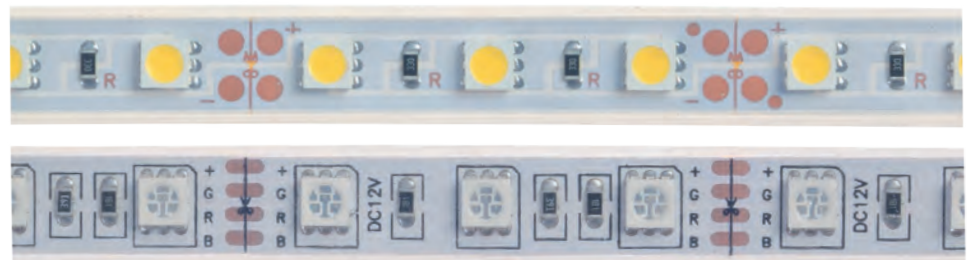


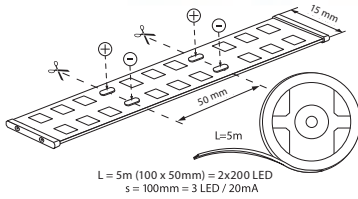
**LED 300 - IP65**



Model	LEDs (pcs/m)	Watts / meter	Colour temp. (K)	Colour	Catalogue number	Packing (reel)
LED-5050-60-WW	60pcs/m	14.4W/m	2700~3000	warm white	<b>99LED677</b>	1
LED-5050-60-CW	60pcs/m	14.4W/m	6200~6500	cold white	<b>99LED678</b>	1
LED-5050-60-Y	60pcs/m	14.4W/m	587-592	yellow	<b>99LED679</b>	1
LED-5050-60-G	60pcs/m	14.4W/m	520-525	green	<b>99LED680</b>	1
LED-5050-60-B	60pcs/m	14.4W/m	465-470	blue	<b>99LED681</b>	1
LED-5050-60-R	60pcs/m	14.4W/m	620-630	red	<b>99LED682</b>	1
LED-5050-60-RGB*	60pcs/m	14.4W/m	-	RGB	<b>99LED683</b>	1

Note: \*RGB controller suitable for RGB LED strip control could be found on page 342/343.  
Luminous efficiency: 18-20Lm/LED, waterproof IP65, with 3M adhere attached, mark cut.



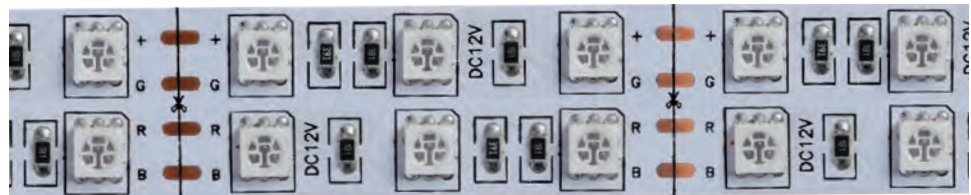


### LED 600 - IP20

A++ A IP 20 RoHS CE

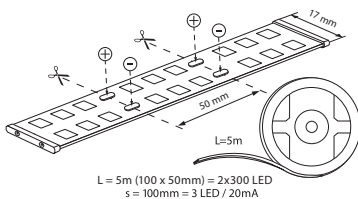
Model	LEDs (pcs/m)	Watts / meter	Colour temp. (K)	Colour	Catalogue number	Packing (reel)
LED-5050-2X60-WW	2X60pcs/m	29W/m	2700-3000	warm white	<b>99LED688</b>	1
LED-5050-2X60-CW	2X60pcs/m	29W/m	6200-6500	cold white	<b>99LED689</b>	1
LED-5050-2X60-RGB	2X60pcs/m	29W/m	-	RGB	<b>99LED690</b>	1

Note: \*RGB controller suitable for RGB LED strip control could be found on page 342/343  
Luminous efficiency: 18-20Lm/LED, 15mm Flex white PCB, with 3M adhere attached, mark cut.



12V DC SMD 5050 REEL 5m 120° 30000h Hg

**3** YEAR WARRANTY

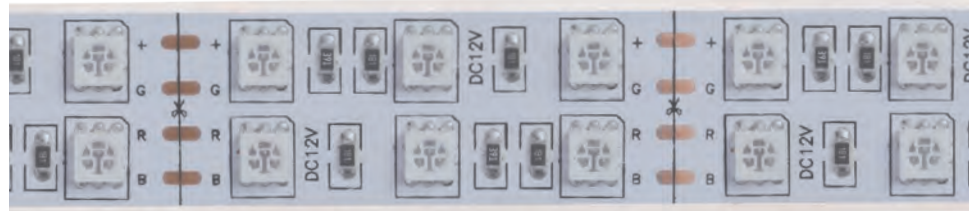


### LED 600 - IP65

A++ A IP 65 RoHS CE

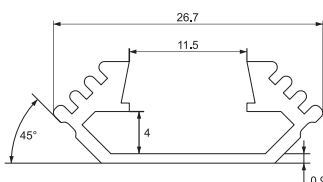
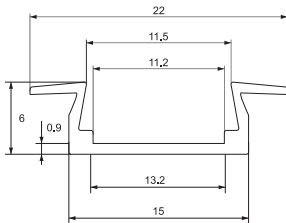
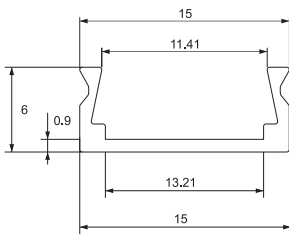
Model	LEDs (pcs/m)	Watts / meter	Colour temp. (K)	Colour	Catalogue number	Packing (reel)
LED-5050-2X60-WW	2X60pcs/m	29W/m	2700-3000	warm white	<b>99LED691</b>	1
LED-5050-2X60-CW	2X60pcs/m	29W/m	6200-6500	cold white	<b>99LED692</b>	1
LED-5050-2X60-RGB	2X60pcs/m	29W/m	-	RGB	<b>99LED693</b>	1

Note: \*RGB controller suitable for RGB LED strip control could be found on page 342/343  
Luminous efficiency: 18-20Lm/LED, 17mm Flex white PCB hollow tube waterproof IP65, with 3M adhere attached, mark cut.



12V DC SMD 5050 REEL 5m 120° 30000h Hg

**3** YEAR WARRANTY

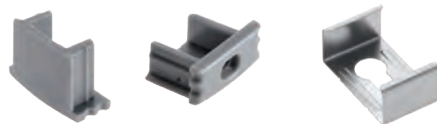


**ELM718/1**



Model		Catalogue number	Packing (pcs)
1. ELM718/1-1000	Aluminium profile for LED strip with matt PVC cover-1m	<b>99ACC07</b>	100
2. ELM718/1-2000	Aluminium profile for LED strip with matt PVC cover-2m	<b>99ACC08</b>	100
3. ELM718/1-end cap	PVC end cap	<b>99ACC09</b>	50
4. ELM718/1-connector	Fixing bracket	<b>99ACC10</b>	50

Surface mounted



**ELM718/2**



Model		Catalogue number	Packing (pcs)
1. ELM718/2-1000	Aluminium profile for LED strip with matt PVC cover-1m	<b>99ACC11</b>	80
2. ELM718/2-2000	Aluminium profile for LED strip with matt PVC cover-2m	<b>99ACC12</b>	80
3. ELM718/2-end cap	PVC end cap	<b>99ACC13</b>	50

Recessed mounted



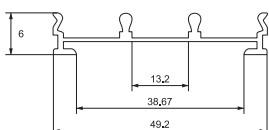
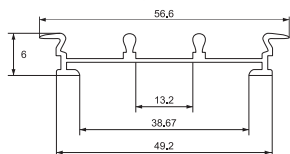
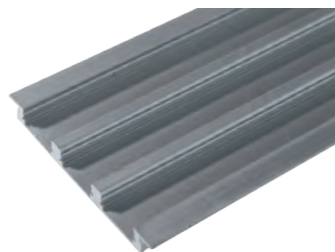
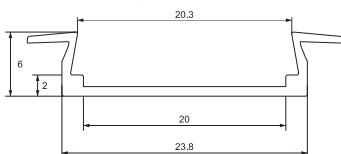
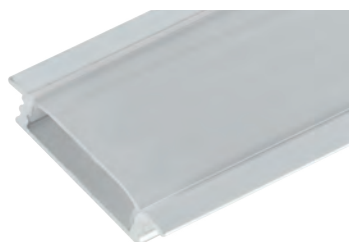
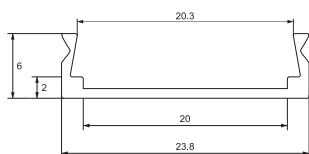
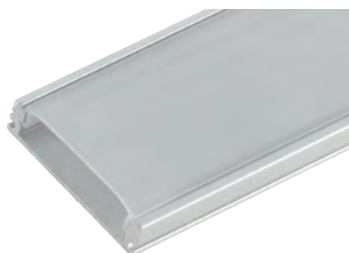
**ELM9012**



Model		Catalogue number	Packing (pcs)
1. ELM9012/2-1000	Aluminium profile for LED strip with matt PVC cover-1m	<b>99ACC14</b>	60
2. ELM9012/2-2000	Aluminium profile for LED strip with matt PVC cover-2m	<b>99ACC15</b>	60
3. ELM9012/2-end cap	PVC end cap	<b>99ACC16</b>	50
4. ELM9012/1-connector	Fixing bracket	<b>99ACC17</b>	50

Surface mounted





### ELM6220/1



Model		Catalogue number	Packing (pcs)
1. ELM6220/1-1000	Aluminium profile for LED strip with matt PVC cover-1m	<b>99ACC23</b>	1
2. ELM6220/1-end cap	PVC end cap	<b>99ACC24</b>	1
3. ELM6220/1-connector	Fixing bracket	<b>99ACC25</b>	1

Surface mounted



### ELM6220/2



Model		Catalogue number	Packing (pcs)
4. ELM6220/2-1000	Aluminium profile for LED strip with matt PVC cover-1m	<b>99ACC26</b>	1
5. ELM6220/2-end cap		<b>99ACC27</b>	1

Recessed mounted



### ELM950/1



Model		Catalogue number	Packing (pcs)
1. ELM950/1-1000	Aluminium profile for LED strip with matt PVC cover-1m	<b>99ACC28</b>	1
2. ELM950/1-end cap	PVC end cap	<b>99ACC29</b>	1
3. ELM950/1-connector	Fixing bracket	<b>99ACC30</b>	1

Surface mounted



### ELM950/2



Model		Catalogue number	Packing (pcs)
4. ELM950/2-1000	Aluminium profile for LED strip with matt PVC cover-1m	<b>99ACC31</b>	1
5. ELM950/2-end cap	PVC end cap	<b>99ACC32</b>	1

Recessed mounted





**ACCESSORIES FOR LED STRIP**



1. ACC01 Silicone clips for LED strip.  
Catalogue number: **99ACC01**  
Packing (pcs): 50



2. ACC02 One colour LED strip connector, 150mm cable  
Catalogue number: **99ACC02**  
Packing (pcs): 50



3. ACC03 One colour LED strip connector, 150mm cable  
Catalogue number: **99ACC03**  
Packing (pcs): 50



ACC04 RGB LED strip connector, 150mm cable  
Catalogue number: **99ACC04**  
Packing (pcs): 50



5. ACC05 One colour LED strip connector  
Catalogue number: **99ACC05**  
Packing (pcs): 50



6. ACC06 RGB LED strip connector  
Catalogue number: **99ACC06**  
Packing (pcs): 50



7. Female connector with cable 15cm  
Colour: white  
Catalogue number: **99ACC19**  
Packing (pcs): 100



8. 4pin connector with cable 20cm  
Colour: white  
Catalogue number: **99ACC20**  
Packing (pcs): 100



9. FRONT CAPS for LED strip SMD3528 IP65  
Catalogue number: **99LED450**  
Packing (pcs): 500



10. END CAPS for LED strip SMD3528 IP65  
Catalogue number: **99LED451**  
Packing (pcs): 500



11. FRONT CAPS for LED strip SMD5050 IP65  
Catalogue number: **99LED452**  
Packing (pcs): 500



12. END CAPS for LED strip SMD5050 IP65  
Catalogue number: **99LED453**  
Packing (pcs): 500

13. FRONT CAPS for RGB LED strip SMD5050 IP65  
Catalogue number: **99LED454**  
Packing (pcs): 500

14. END CAPS for RGB LED strip SMD5050 IP65  
Catalogue number: **99LED455**  
Packing (pcs): 500



### SETDC CONSTANT VOLTAGE DRIVERS FOR LED IP 20 RoHS COMPLIANT EMC CE

Model	Watt	Voltage U <sub>in</sub> / U <sub>out</sub>	Size (mm)			Catalogue number	Packing (pcs)
			Length	Width	Height		
SETDC12PVC	12W	230V AC / 12V DC	90	48	34	<b>99SETDC12PVC</b>	25
SETDC24PVC	24W	230V AC / 12V DC	115	48	34	<b>99SETDC24PVC</b>	25

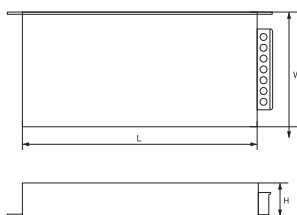
**3** YEAR WARRANTY



### SETDC CONSTANT VOLTAGE DRIVERS FOR LED IP 20 RoHS COMPLIANT EMC CE

Model	Watt	Voltage U <sub>in</sub> / U <sub>out</sub>	Size (mm)			Catalogue number	Packing (pcs)
			Length	Width	Height		
SETDC15	15W	230VAC/12VDC	70	39	31	<b>99SETDC15IP20</b>	100
SETDC30	30W	230VAC/12VDC	85	58	38	<b>99SETDC30IP20</b>	100
SETDC36	36W	230VAC/12VDC	85	58	38	<b>99SETDC36IP20</b>	100
SETDC60	60W	230VAC/12VDC	110	78	38	<b>99SETDC60IP20</b>	50
SEDC100	100W	230VAC/12VDC	159	98	38	<b>99SETDC100IP20</b>	20
SETDC150	150W	230VAC/12VDC	199	98	38	<b>99SETDC150IP20</b>	20
SETDC250	250W	230VAC/12VDC	200	110	50	<b>99SETDC250IP20</b>	20
SETDC360	360W	230VAC/12VDC	200	110	50	<b>99SETDC360IP20</b>	20

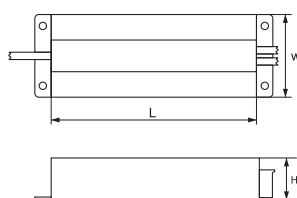
**3** YEAR WARRANTY

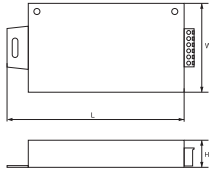


### SETDC CONSTANT VOLTAGE DRIVERS FOR LED IP 67 RoHS COMPLIANT EMC CE

Model	Watt	Voltage U <sub>in</sub> / U <sub>out</sub>	Size (mm)			Catalogue number	Packing (pcs)
			Length	Width	Height		
SETDC30I	30W	230VAC/12VDC	200	30	20	<b>99SETDC30IP67</b>	50
SETDC60I	60W	230VAC/12VDC	178	68	34	<b>99SETDC60IP67</b>	20
SETDC100I	100W	230VAC/12VDC	250	72	45	<b>99SETDC100IP67</b>	20
SETDC150I	150W	230VAC/12VDC	250	128	60	<b>99SETDC150IP67</b>	20
SETDC200I	200W	230VAC/12VDC	200	120	53	<b>99SETDC200IP67</b>	20

**3** YEAR WARRANTY



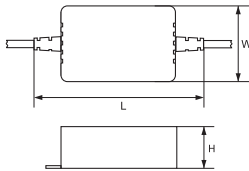


**4 KEY RF CONTROLLER FOR RGB STRIP**



Model	Current (A)	Voltage	Length	Width	Height	Catalogue number	Packing (pcs)
RGB controller 4 dynamic modes with regulation	12	12VDC	128	64	25	<b>99RGBCONTROL</b>	1

**3** YEAR WARRANTY

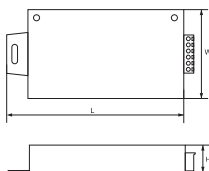


**TOUCH SCREEN RF CONTROLLER FOR RGB STRIP**



Model	Current (A)	Voltage	Size (mm)			Catalogue number	Packing (pcs)
			Length	Width	Height		
Plastic controller and touch screen (The remote can change to white colour).	18	12V	130	75	25	<b>99RGBCR4</b>	1

**3** YEAR WARRANTY

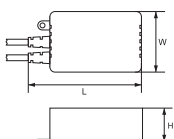


**24 KEY IR CONTROLLER FOR RGB STRIP**



Model	Current (A)	Voltage	Size (mm)			Catalogue number	Packing (pcs)
			Length	Width	Height		
RGB controller 16 stationar colour and 4 dynamic modes with regulation	12	12VDC	128	64	25	<b>99RGBCR3</b>	1

**3** YEAR WARRANTY

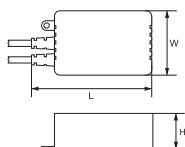


**24 KEY IR CONTROLLER FOR RGB STRIP**



Model	Current (A)	Voltage	Size (mm)			Catalogue number	Packing (pcs)
			Length	Width	Height		
RGB controller 16 stationar colour and 4 dynamic modes with regulation.	6	12VDC	60	35	25	<b>99RGBCONTROL1</b>	1

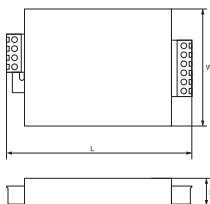
**3** YEAR WARRANTY



### 44 KEY IR CONTROLLER FOR RGB STRIP



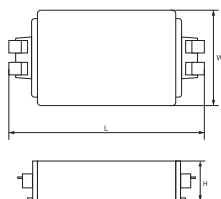
Model	Current (A)	Voltage	Size (mm)			Catalogue number	Packing (pcs)
			Length	Width	Height		
RGB controller 20 stationar colour and 6 dynamic modes with regulation and RGB mixer mode.	6	12VDC	60	35	25	<b>99RGBCONTROL2</b>	1



### RGB AMPLIFIER



Model	Current (A)	Voltage	Size (mm)			Catalogue number	Packing (pcs)
			Length	Width	Height		
RGB AMPLIFIER	12	12VDC	107	65	25	<b>99RGBAMPLIFIER</b>	1



### LED SINGLE RF COLOUR DIMMER



Model	Current (A)	Voltage	Size (mm)			Catalogue number	Packing (pcs)
			Length	Width	Height		
LED single colour dimmer - DC12V/8A	8	12VDC	107	58	35	<b>99LEDDIMMER</b>	1

