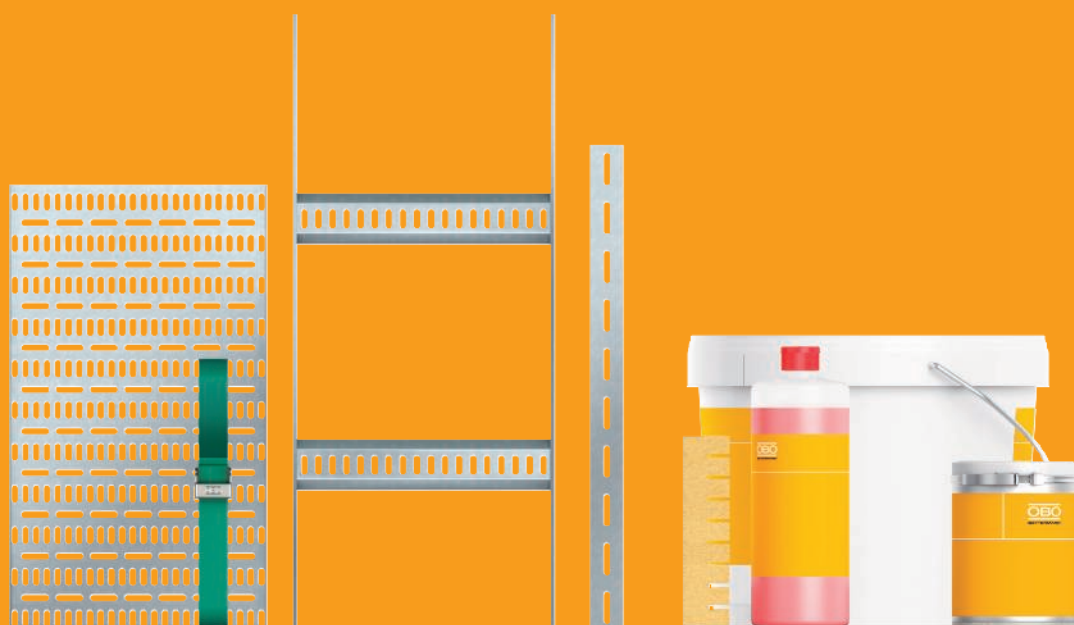




Solutions for shipbuilding and offshore



Building Connections



OBO Bettermann – an official partner of MEYER WERFT

43 km 

Cable ladder systems

2,700 

passengers

14

decks



14 km



of cable tray systems

253 m



long

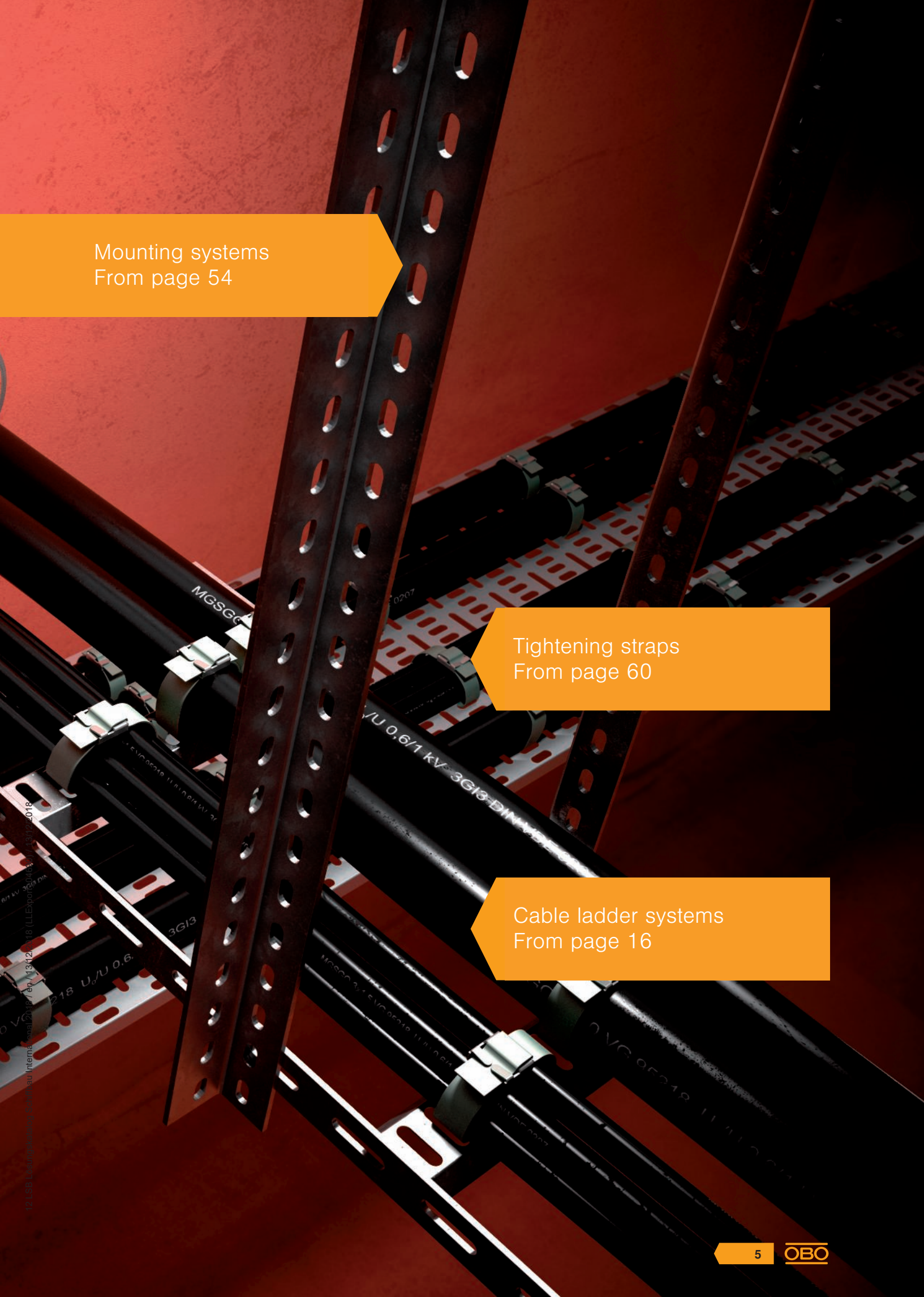


Strong product range, first-class quality

Systems installed on ships must often fulfil special requirements – something which particularly applies to electrical installations. The comprehensive range of OBO products, quality-tested according to ISO 9001, offers safe solutions for all kinds of requirements. All the marine cable trays and cable ladders for shipbuilding meet the requirements of DIN EN 61537 "Cable management – Cable tray systems and cable ladder systems" and take the construction specifications of Germanischer Lloyd and the IEC into account. In addition, the OBO cable ladders are certified by DNV-GL and RINA. For insulation areas, OBO can offer a system with an A60 fire resistance class, whose excellent properties have been certified by Germanischer Lloyd.

Fire insulation
From page 68

Cable tray systems
From page 8



Mounting systems
From page 54

Tightening straps
From page 60

Cable ladder systems
From page 16

Shipbuilding cable tray systems

High-quality materials

The OBO cable trays meet the highest requirements in shipbuilding, because we use particularly high-quality materials: Whether stainless steel or aluminium, electrogalvanised or hot-dip galvanised – all the components are always perfectly manufactured.



Coherent system accessories

Spring chucks and tightening straps are available for simple installation and the latter are available in rolls or fixed lengths.

FS

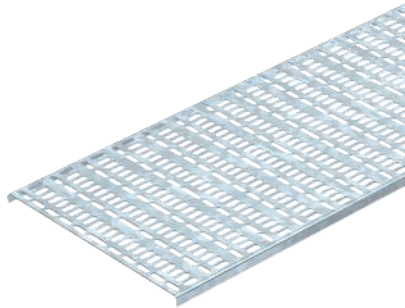
FT

A2

A4

ALU

Cable tray MKR...



Nominal width mm	Metal thickness mm	FS Strip-galvanised	FT Hot-dip galvanised	A2 Stainless steel	A4 Stainless steel	Alu Aluminium
50	1.00	✓				
75	1.00	✓				
100	1.00	✓				
150	1.00	✓				
200	1.00	✓				
300	1.00	✓				
50	1.25	✓	✓	✓	✓	✓
75	1.25	✓	✓	✓	✓	✓
100	1.25	✓	✓	✓	✓	✓
125	1.25	✓	✓	✓	✓	✓
150	1.25	✓	✓	✓	✓	✓
200	1.25	✓	✓	✓	✓	✓
250	1.25	✓	✓	✓	✓	✓
300	1.25	✓	✓	✓	✓	✓
300	1.25	✓	✓	✓	✓	✓
* Deviating plate thickness						

Straight connector MKR SV...



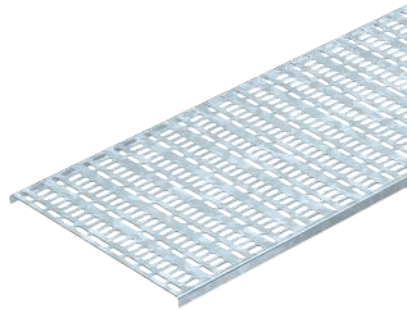
Nominal width mm	Metal thickness mm	FS strip-galvanised	FT Hot-dip galvanised	A2 Stainless steel	A4 Stainless steel	Alu Aluminium
✓	✓	✓	✓	✓	✓	✓

90° bend MKRB 90...



Nominal width mm	Metal thickness mm	FS Strip-galvanised	FT Hot-dip galvanised	A2 Stainless steel	A4 Stainless steel	Alu Aluminium
50	1.25	✓	✓			
75	1.25	✓	✓			
100	1.25	✓	✓			
125	1.25	✓	✓			
150	1.50	✓	✓			
200	1.50	✓	✓			
250	1.50	✓	✓			
300	1.50	✓	✓	✓	✓	✓
75	1.25	✓	✓	✓	✓	✓
100	1.25	✓	✓	✓	✓	✓
125	1.25	✓	✓	✓	✓	✓
150	1.25	✓	✓	✓	✓	✓
200	1.25	✓	✓	✓	✓	✓
250	1.25	✓	✓	✓	✓	✓
300	1.25	✓	✓	✓	✓	✓
* Deviating plate thickness						

Cable tray, marine standard



Type	Width mm	Plate thickness mm	Pack. Weight		Item No.
			m	kg/100 m	
MKR 15 050 FS	50	1.00	2	49.000	6045952
MKR 15 075 FS	75	1.00	2	64.000	6045960
MKR 15 100 FS	100	1.00	2	76.000	6045979
MKR 15 150 FS	150	1.00	2	104.000	6045995
MKR 15 200 FS	200	1.00	2	131.000	6046002

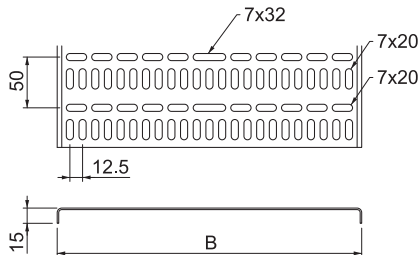
St Steel

FS Strip-galvanised

Cable tray according to marine standard.

/m

Dimensions



Type	Length mm	Dimension B mm	Side height mm
MKR 15 075 FS	2000	75	15
MKR 15 100 FS	2000	100	15
MKR 15 150 FS	2000	150	15
MKR 15 200 FS	2000	200	15

Screw connector



Type

MKR SV FS

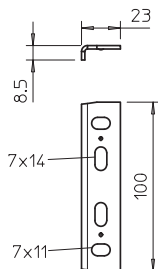
St Steel

FS Strip-galvanised

Straight connector for straight connection of cable trays, according to the marine standard, with a side height of 15 mm.

Pack. pcs	Weight kg/100 pcs.	Item No.

/pc.



Cable tray, marine standard

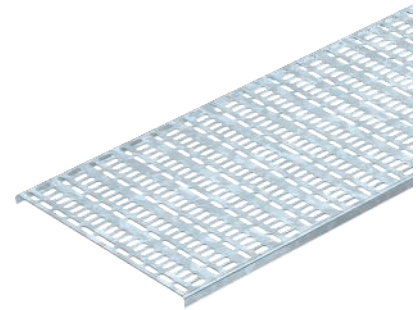
Type	Width mm	Plate thickness mm	Pack. m	Weight kg/100 m	Item No.
MKR 15 075 FS	75	1.25	2	78.500	6046372
MKR 15 100 FS	100	1.25	2	97.000	6046374
MKR 15 125 FS	125	1.25	2	113.400	6046375
MKR 15 150 FS	150	1.50	2	135.500	6046376
MKR 15 200 FS	200	1.50	2	194.500	6046004
MKR 15 250 FS	250	1.50	2	235.250	6046379
MKR 15 300 FS	300	1.50	2	275.000	6046029
MKR 15 050 FT	50	1.25	2	65.500	6045057
MKR 15 075 FT	75	1.25	2	84.700	6045073
MKR 15 100 FT	100	1.25	2	104.000	6045103
MKR 15 125 FT	125	1.25	2	125.500	6045138
MKR 15 150 FT	150	1.50	2	162.500	6045154
MKR 15 200 FT	200	1.50	2	205.500	6045200
MKR 15 250 FT	250	1.50	2	253.000	6045251
MKR 15 300 FT	300	1.50	2	292.700	6045308

St Steel

FS Strip-galvanised **FT** Hot-dip galvanised

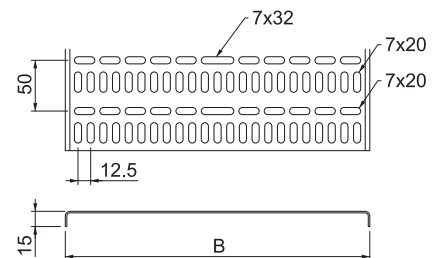
/m

Cable tray according to marine standard.



Type	Length mm	Dimension	
		B mm	Side height mm
MKR 15 050 FS	2000	50	15
MKR 15 075 FS	2000	75	15
MKR 15 100 FS	2000	100	15
MKR 15 125 FS	2000	125	15
MKR 15 150 FS	2000	150	15
MKR 15 200 FS	2000	200	15
MKR 15 250 FS	2000	250	15
MKR 15 300 FS	2000	300	15

Dimensions



Screw connector

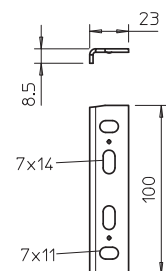
Type	Pack. pcs	Weight kg/100 pcs.	Item No.
MKR SV FT	25	5.000	6066240

St Steel

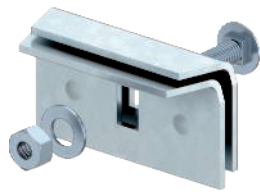
FS Strip-galvanised **FT** Hot-dip galvanised

/pc.

Straight connector for straight connection of cable trays, according to the marine standard, with a side height of 15 mm.



Clamp connector



Type

MKR KV FT

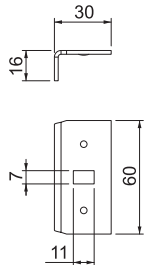
St Steel

FT Hot-dip galvanised

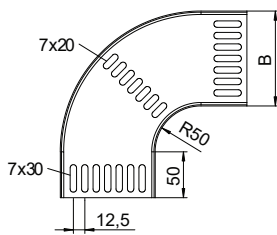
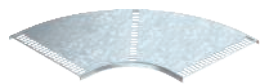
Pack. pcs	Weight kg/100 pcs.	Item No.
25	8.800	6066143

/pc.

Clamp connector for straight connection of cable trays, according to the marine standard, with a side height of 15 mm.



90° bend



Type	Width mm	Plate thickness mm	Pack. pcs	Weight kg/100 pcs.	Item No.
MKRB 90 15 050FS	51	1.25	1	14.600	7061146
MKRB 90 15 075FS	76	1.25	1	22.500	7061050
MKRB 90 15 100FS	101	1.25	1	28.400	7061244
MKRB 90 15 125FS	126	1.25	1	56.500	7061252
MKRB 90 15 150FS	151	1.50	1	73.300	7061360
MKRB 90 15 200FS	201	1.50	1	102.400	7061449
MKRB 90 15 250FS	252	1.50	1	163.800	7061546
MKRB 90 15 300FS	302	1.50	1	206.000	7061643
MKRB 90 15 050FT	51	1.25	1	16.000	7061145
MKRB 90 15 075FT	76	1.25	1	23.500	7061048
MKRB 90 15 100FT	101	1.25	1	31.090	7061242
MKRB 90 15 125FT	125	1.25	1	61.000	7061250
MKRB 90 15 150FT	151	1.50	1	79.210	7061358
MKRB 90 15 200FT	201	1.50	1	110.600	7061447
MKRB 90 15 250FT	252	1.50	1	176.900	7061544
MKRB 90 15 300FT	302	1.50	1	222.480	7061641

St Steel

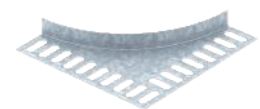
FS Strip-galvanised

FT Hot-dip galvanised

/pc.

Bend for plug mounting.

Corner connector



Type

MKR EV FT

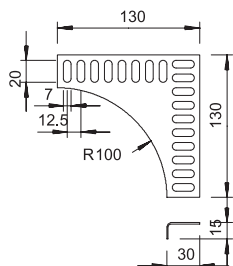
St Steel

FT Hot-dip galvanised

Pack. pcs	Weight kg/100 pcs.	Item No.
1	9.330	7060041

/pc.

Corner connector for all cable trays according to the marine standard with side height of 15 mm.

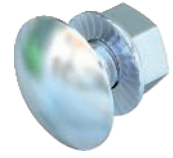
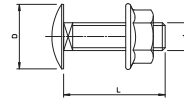


Truss-head bolt with flange nut

Type	Dimension mm	Dimen- sion L mm	Dimen- sion d mm	Dimen- sion D mm	Pack. pcs	Weight kg/100 pcs.	Item No.
FRSB 6x12 F	M 6 x 12	12	6	13.5	100	0.990	6406122

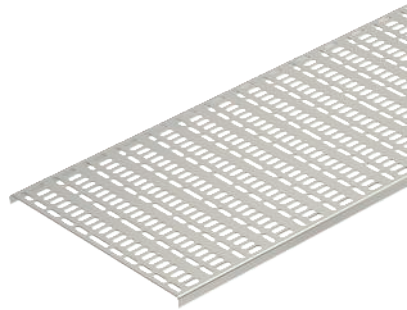
St Steel
F Hot-dip galvanised

/100 pc.



Truss-head bolt with square neck including flange nut.

Cable tray, marine standard



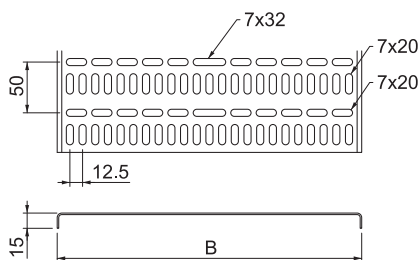
Type	Width mm	Plate thickness mm	Pack. m	Weight kg/100 m	Item No.
MKR 15 050 A2	50	1.25	2	61.250	6045830
MKR 15 075 A2	75	1.25	2	80.000	6045832
MKR 15 100 A2	100	1.25	2	95.000	6045834
MKR 15 125 A2	125	1.25	2	113.400	6045836
MKR 15 150 A2	150	1.50	2	156.000	6045838
MKR 15 200 A2	200	1.50	2	196.500	6045840
MKR 15 250 A2	250	1.50	2	235.250	6045842
MKR 15 300 A2	300	1.50	2	275.000	6045844
MKR 15 050 A4	50	1.25	2	49.000	6045850
MKR 15 075 A4	75	1.25	2	64.000	6045852
MKR 15 100 A4	100	1.25	2	76.000	6045854
MKR 15 125 A4	125	1.25	2	90.700	6045856
MKR 15 150 A4	150	1.50	2	156.000	6045858
MKR 15 200 A4	200	1.50	2	196.500	6045860
MKR 15 250 A4	250	1.50	2	235.250	6045862
MKR 15 300 A4	300	1.50	2	275.000	6045864

V2A Stainless steel, A2 V4A Stainless steel, A4

/m

Cable tray according to marine standard.

Dimensions



Type	Length mm	Dimension B mm	Side height mm
MKR 15 050 A2	2000	50	15
MKR 15 075 A2	2000	75	15
MKR 15 100 A2	2000	100	15
MKR 15 125 A2	2000	125	15
MKR 15 150 A2	2000	150	15
MKR 15 200 A2	2000	200	15
MKR 15 250 A2	2000	250	15
MKR 15 300 A2	2000	300	15

Screw connector

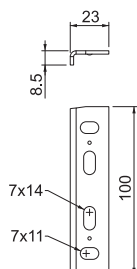


Type	Pack. pcs	Weight kg/100 pcs.	Item No.
MKR SV A2	25	5.485	6066244
MKR SV A4	25	5.485	6066246

V2A Stainless steel, A2 V4A Stainless steel, A4

/pc.

Straight connector for straight connection of cable trays, according to the marine standard, and fittings with a side height of 15 mm.



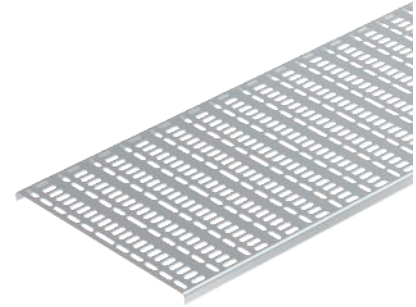
Cable tray, marine standard

Type	Width mm	Plate thickness mm	Pack. m	Weight kg/100 m	Item No.
MKR 15 050 ALU	50	1.50	2	25.500	6045707
MKR 15 075 ALU	75	1.50	2	33.000	6045715
MKR 15 100 ALU	100	1.50	2	39.500	6045723
MKR 15 125 ALU	125	1.50	2	46.800	6045731
MKR 15 150 ALU	150	1.50	2	70.500	6045758
MKR 15 200 ALU	200	2.00	2	89.500	6045766
MKR 15 250 ALU	250	2.00	2	107.900	6045774
MKR 15 300 ALU	300	2.00	2	126.500	6045782

Alu Aluminium

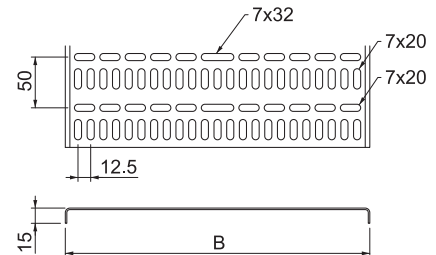
/m

Cable tray according to marine standard.



Dimensions

Type	Length mm	Dimension B mm	Side height mm
MKR 15 050 ALU	2000	50	15
MKR 15 075 ALU	2000	75	15
MKR 15 100 ALU	2000	100	15
MKR 15 125 ALU	2000	125	15
MKR 15 150 ALU	2000	150	15
MKR 15 200 ALU	2000	200	15
MKR 15 250 ALU	2000	250	15
MKR 15 300 ALU	2000	300	15



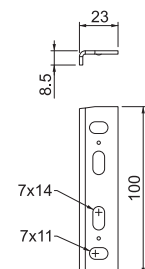
Screw connector

Type	Pack. pcs	Weight kg/100 pcs.	Item No.
MKR SV ALU	25	2.910	6066248

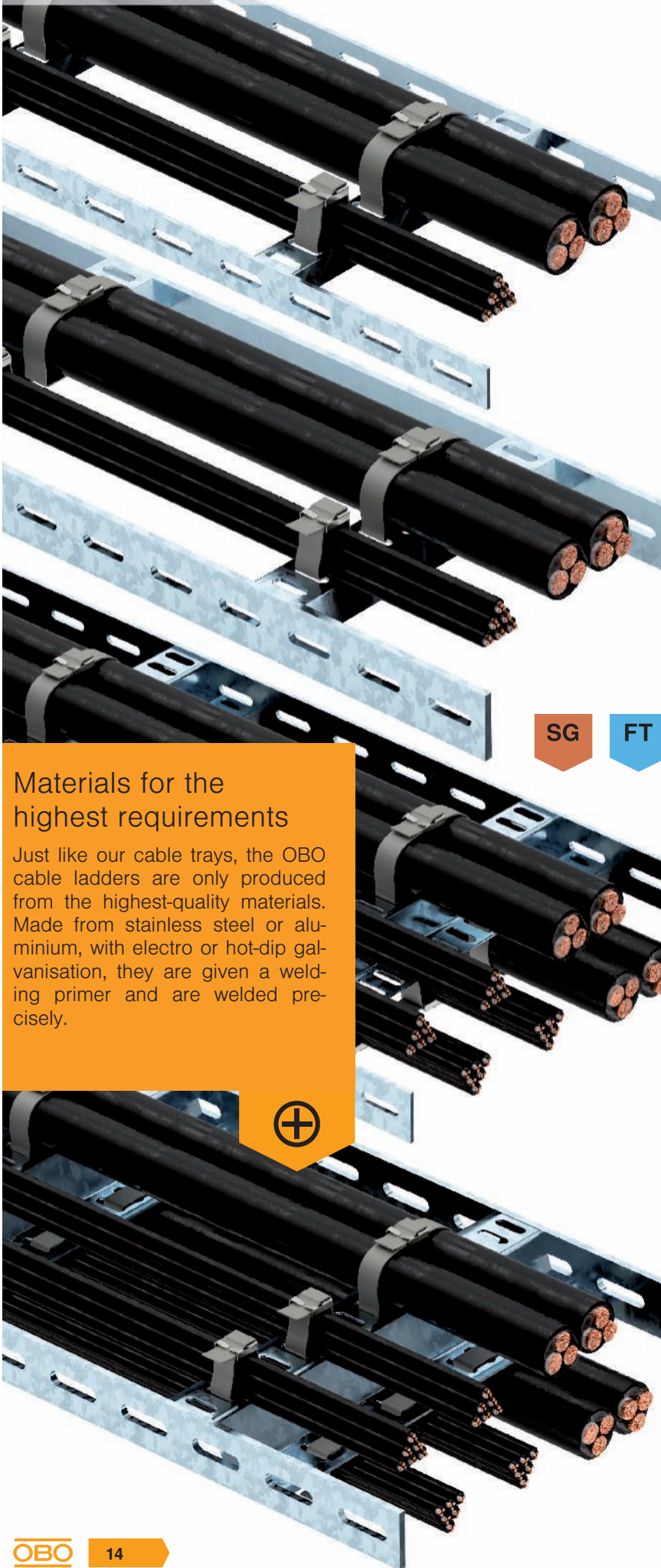
Alu Aluminium

/pc.

Straight connector for straight connection of cable trays, according to the marine standard, and fittings with a side height of 15 mm.



Cable ladder systems



Perfectly manufactured

OBO cable ladders have high-quality galvanisation and are particularly light, as weight is saved through the burr-free, perforated side rails. Through the certified SIGMA-WELD 199 welding primer and the precise welding seams, we can achieve an extremely high resistance to corrosion. Our cable ladders are available with two different rungs: In trapezoidal or Z shape for double-sided assignment. A continuous connection is also possible if the cable ladders have to be shortened.



SG

FT

A2

A4

ALU

Materials for the highest requirements

Just like our cable trays, the OBO cable ladders are only produced from the highest-quality materials. Made from stainless steel or aluminium, with electro or hot-dip galvanisation, they are given a welding primer and are welded precisely.

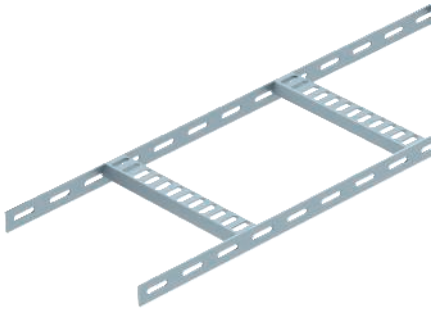


Coherent system accessories

Spring chucks and tightening straps are available on rolls or in fixed lengths for simple installation. In addition, matching construction and suspension profiles are available for all the cable ladders.

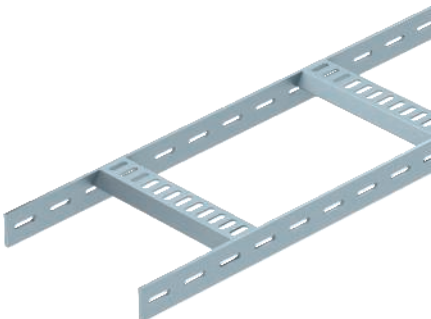


Cable ladder with trapezoidal rung, light-duty, SL 42...



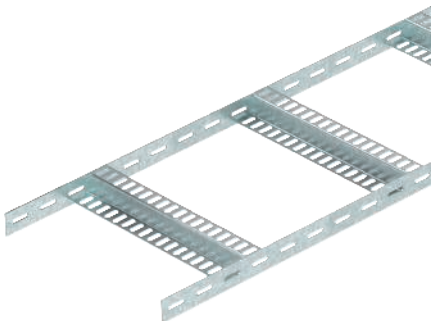
Nominal width mm	SG Primed	FT Hot-dip galvanised	A2 Stainless steel	A4 Stainless steel	Al
75	✓	✓	✓	✓	✓
100	✓	✓	✓	✓	✓
150	✓	✓	✓	✓	✓
200	✓	✓	✓	✓	✓
250	✓	✓	✓	✓	✓
300	✓	✓	✓	✓	✓

Cable ladder with trapezoidal rung, standard, SL 62...



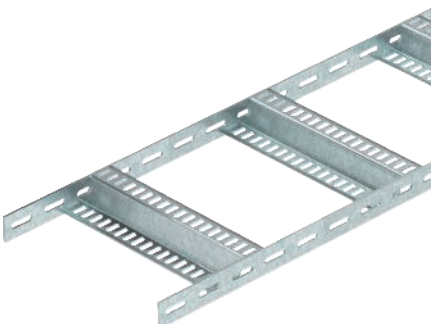
Nominal width mm	SG Primed	FT Hot-dip galvanised	A2 Stainless steel	A4 Stainless steel	Alu
100	✓	✓	✓	✓	✓
200	✓	✓	✓	✓	✓
300	✓	✓	✓	✓	✓
400	✓	✓	✓	✓	✓
500	✓	✓	✓	✓	✓
600	✓	✓	✓	✓	✓

Cable ladder with Z rung, light-duty, SLZ L...



Nominal width mm	SG Primed	FT Hot-dip galvanised	A2 Stainless steel	A4 Stainless steel	Alu
100	✓	✓	✓	✓	
150	✓	✓	✓	✓	
200	✓	✓	✓	✓	
300	✓	✓	✓	✓	
400	✓	✓	✓	✓	
500	✓	✓	✓	✓	
600	✓	✓	✓	✓	

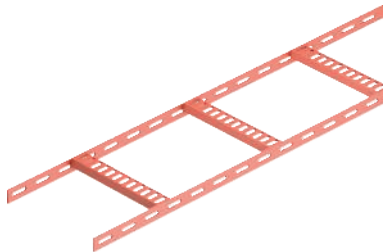
Cable ladder with Z rung, standard, SLZ...



Nominal width mm	SG Primed	FT Hot-dip galvanised	A2 Stainless steel	A4 Stainless steel	Alu
100	✓	✓	✓	✓	✓
200	✓	✓	✓	✓	✓
300	✓	✓	✓	✓	✓
400	✓	✓	✓	✓	✓
500	✓	✓	✓	✓	✓
600	✓	✓	✓	✓	✓
700	✓	✓	✓	✓	✓
800	✓	✓	✓	✓	✓
900	✓	✓	✓	✓	✓
1000	✓	✓	✓	✓	✓
1200	✓	✓	✓	✓	✓

Fittings are available for all cable ladder types.

Cable ladder with trapezoidal rung, light-duty



Type	Width mm	Rail thickness mm	Pack. m	Weight kg/100 m	Item No.
SL 42 075 SG	75	3	2	109.000	7097026
SL 42 100 SG	100	3	2	112.500	7097034
SL 42 150 SG	150	3	2	119.000	7097042
SL 42 200 SG	200	3	2	125.500	7097050
SL 42 250 SG	250	3	2	132.000	7097069
SL 42 300 SG	300	3	2	139.000	7097077

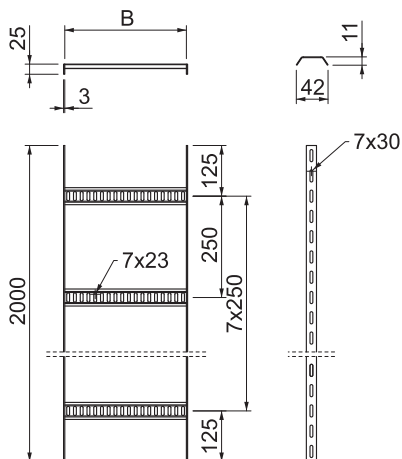
Sl Steel

/m

SG Pre-treated for welding

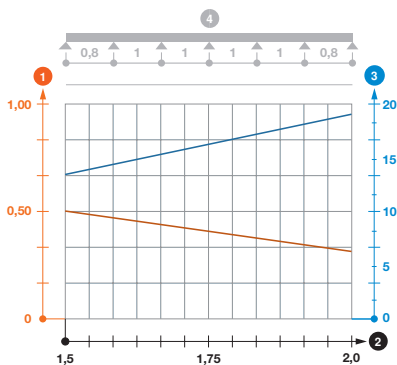
Shipbuilding cable ladder with perforated side rail of side height 25 mm with welded, perforated trapezoidal rungs which open in a downwards direction. Load tested according to IEC in conjunction with connector, type SLV. Welding primer type SIGMA-WELD 199, also available in white.

Dimensions



Type	Length mm	Dimension B mm	Side height mm	Rail thickness mm
SL 42 075 SG	2000	81	25	3
SL 42 100 SG	2000	106	25	3
SL 42 150 SG	2000	156	25	3
SL 42 200 SG	2000	206	25	3
SL 42 250 SG	2000	256	25	3
SL 42 300 SG	2000	306	25	3

Load



Type	1.5 m kN/m	2.0 m kN/m
SL 42 075 SG	0.5	0.36
SL 42 100 SG	0.5	0.36
SL 42 150 SG	0.5	0.36
SL 42 200 SG	0.5	0.36
SL 42 250 SG	0.5	0.36
SL 42 300 SG	0.5	0.36

Load diagram, cable ladder, light duty SL42

- 1 Permitted cable tray/ladder load in kN/m without man load
- 2 Support width in m
- 3 Rail bend in mm at permitted kN/m
- Load curve with cable tray/ladder width in mm
- Strut bend curve according to support width
- 4 Load scheme during testing

90° bend

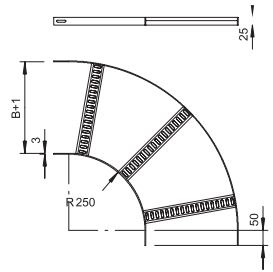
Type	Width mm	Rail thickness mm	Pack. pcs	Weight kg/100 pcs.	Item No.
SLB 90 42 075 SG	75	3	1	70.600	7098500
SLB 90 42 100 SG	100	3	1	75.800	7098502
SLB 90 42 150 SG	150	3	1	85.400	7098510
SLB 90 42 200 SG	200	3	1	95.000	7098529
SLB 90 42 250 SG	250	3	1	104.600	7098537
SLB 90 42 300 SG	300	3	1	114.300	7098545

Sl Steel

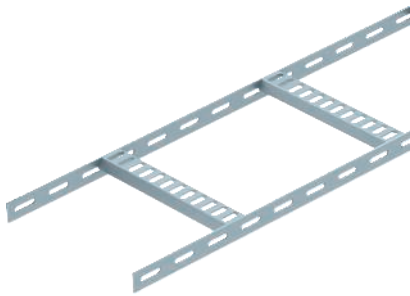
SG Pre-treated for welding

/pc.

Connectors should be ordered separately and in the appropriate quantity.



Cable ladder with trapezoidal rung, light-duty



Type	Width mm	Rail thickness mm	Pack. m	Weight kg/100 m	Item No.
SL 42 075 FT	75	3	2	114.000	7097115
SL 42 100 FT	100	3	2	118.000	7097123
SL 42 150 FT	150	3	2	125.000	7097131
SL 42 200 FT	200	3	2	132.500	7097158
SL 42 250 FT	250	3	2	140.000	7097166
SL 42 300 FT	300	3	2	147.500	7097174

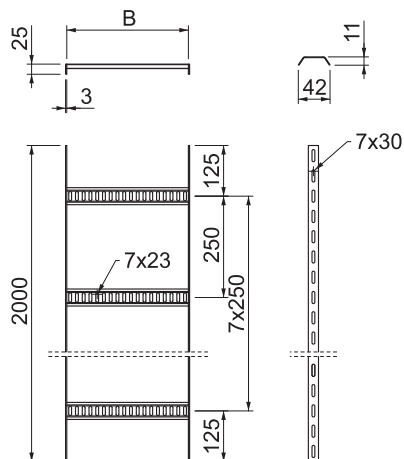
Sl Steel

FT Hot-dip galvanised

/m

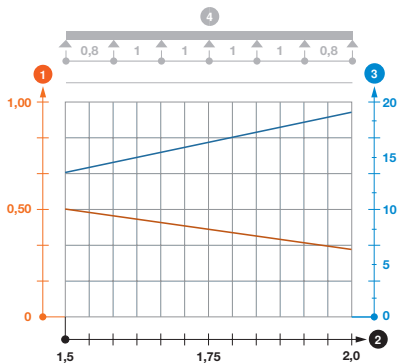
Shipbuilding cable ladder with perforated side rail of side height 25 mm with welded, perforated trapezoidal rungs which open in a downwards direction. Load tested according to IEC in conjunction with connector, type SLV.

Dimensions



Type	Length mm	Dimension B mm	Side height mm	Rail thickness mm
SL 42 075 FT	2000	81	25	3
SL 42 100 FT	2000	106	25	3
SL 42 150 FT	2000	156	25	3
SL 42 200 FT	2000	206	25	3
SL 42 250 FT	2000	256	25	3
SL 42 300 FT	2000	306	25	3

Load



Type	1.5 m kN/m	2.0 m kN/m
SL 42 075 FT	0.5	0.36
SL 42 100 FT	0.5	0.36
SL 42 150 FT	0.5	0.36
SL 42 200 FT	0.5	0.36
SL 42 250 FT	0.5	0.36
SL 42 300 FT	0.5	0.36

Load diagram, cable ladder, light-duty SL42

- 1 Permitted cable tray/ladder load in kN/m without man load
- 2 Support width in m
- 3 Rail bend in mm at permitted kN/m
- Load curve with cable tray/ladder width in mm
- Strut bend curve according to support width
- 4 Load scheme during testing

Connector

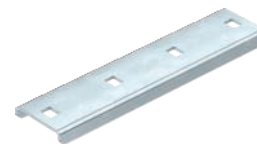


Type	Pack. pcs	Weight kg/100 pcs.	Item No.
SLV 42 FT	20	11.900	7103540

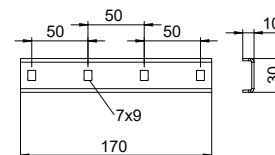
St Steel

FT Hot-dip galvanised

/pc.



Straight connector as external connector to connect cable ladders and fittings with a side height of 25 mm.



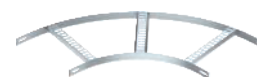
90° bend

Type	Width mm	Rail thickness mm	Pack. pcs	Weight kg/100 pcs.	Item No.
SLB 90 42 075 FT	75	3	1	73.800	7098614
SLB 90 42 100 FT	100	3	1	80.000	7098618
SLB 90 42 150 FT	150	3	1	88.900	7098626
SLB 90 42 200 FT	200	3	1	101.000	7098634
SLB 90 42 250 FT	250	3	1	111.000	7098642
SLB 90 42 300 FT	300	3	1	121.000	7098650

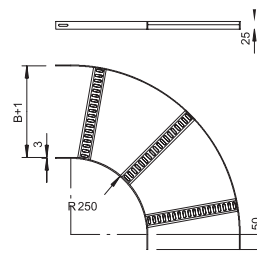
St Steel

FT Hot-dip galvanised

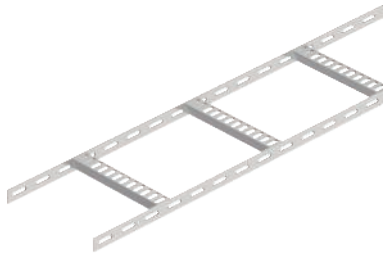
/pc.



Connectors should be ordered separately and in the appropriate quantity.



Cable ladder, light-duty



Type	Rail		Pack. m	Weight kg/100 m	Item No.
	Width mm	thickness mm			
SL 42 075 A2	75	3	2	109.000	7097080
SL 42 100 A2	100	3	2	112.500	7097082
SL 42 150 A2	150	3	2	119.000	7097084
SL 42 200 A2	200	3	2	125.500	7097086
SL 42 250 A2	250	3	2	132.000	7097088
SL 42 300 A2	300	3	2	139.000	7097090

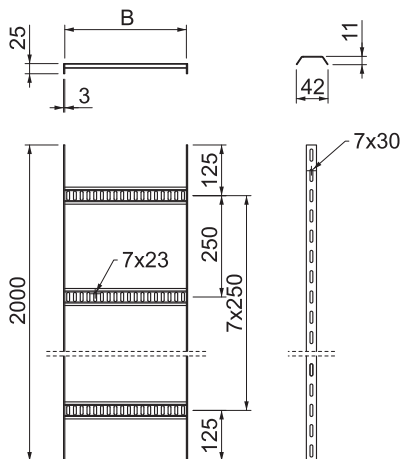
V2A Stainless steel, A2

/m

GB Stained

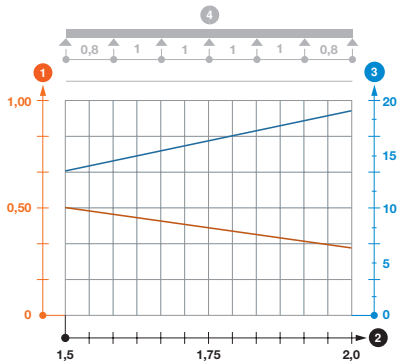
Shipbuilding cable ladder with perforated side rail of side height 25 mm with welded, perforated trapezoidal rungs which open in a downwards direction. Load tested according to IEC in conjunction with connector, type SLV.

Dimensions



Type	Length mm	Dimension B mm	Side height mm	Rail thickness
				mm
SL 42 075 A2	2000	81	25	3
SL 42 100 A2	2000	106	25	3
SL 42 150 A2	2000	156	25	3
SL 42 200 A2	2000	206	25	3
SL 42 250 A2	2000	256	25	3
SL 42 300 A2	2000	306	25	3

Load



Type	1.5 m	2.0 m
	kN/m	kN/m

SL 42 075 A2	0.5	0.36
SL 42 100 A2	0.5	0.36
SL 42 150 A2	0.5	0.36
SL 42 200 A2	0.5	0.36
SL 42 250 A2	0.5	0.36
SL 42 300 A2	0.5	0.36

Load diagram, cable ladder, light duty SL42

- ① Permitted cable tray/ladder load in kN/m without man load
- ② Support width in m
- ③ Rail bend in mm at permitted kN/m
- Load curve with cable tray/ladder width in mm
- Strut bend curve according to support width
- ④ Load scheme during testing

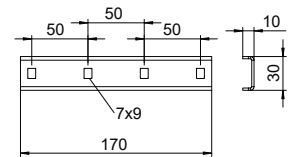
Connector

Type	Pack. pcs	Weight kg/100 pcs.	Item No.
SLV 42 A4	20	11.300	7103560

V4A Stainless steel, A4

/pc.

Straight connector as external connector to connect cable ladders and fittings with a side height of 25 mm.



90° bend

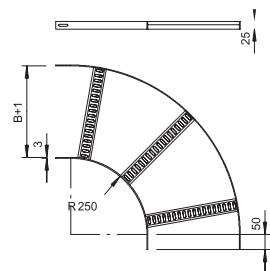
Type	Width mm	Rail thickness mm	Pack. pcs	Weight kg/100 pcs.	Item No.
SLB 90 42 075 A2	75	3	1	71.600	7098654
SLB 90 42 100 A2	100	3	1	76.400	7098656
SLB 90 42 150 A2	150	3	1	85.800	7098658
SLB 90 42 200 A2	200	3	1	95.400	7098660
SLB 90 42 250 A2	250	3	1	105.000	7098662
SLB 90 42 300 A2	300	3	1	114.300	7098664

V2A Stainless steel, A2

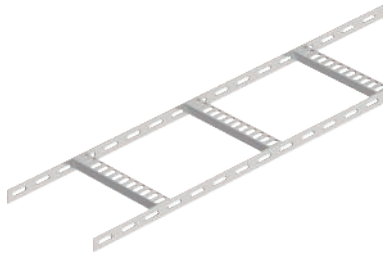
/pc.

GB Stained

Connectors should be ordered separately and in the appropriate quantity.



Cable ladder with trapezoidal rung, light-duty



Type	Rail		Pack.	Weight	Item No.
	Width	thickness			
	mm	mm	m	kg/100 m	
SL 42 075 A4	75	3	2	110.850	7099702
SL 42 100 A4	100	3	2	114.500	7099704
SL 42 150 A4	150	3	2	120.900	7099706
SL 42 200 A4	200	3	2	127.600	7099708
SL 42 250 A4	250	3	2	134.300	7099710
SL 42 300 A4	300	3	2	140.800	7099712

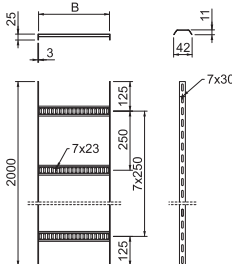
V4A Stainless steel, A4

/m

GB Stained

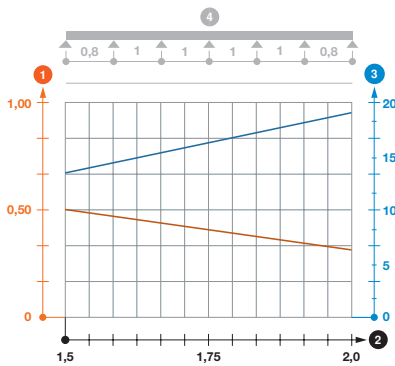
Shipbuilding cable ladder with perforated side rail of side height 25 mm with welded, perforated trapezoidal rungs which open in a downwards direction. Load tested according to IEC in conjunction with connector, type SLV.

Dimensions



Type	Length	Dimension B	Side height	Rail thickness
SL 42 075 A4	2000	81	25	3
SL 42 100 A4	2000	106	25	3
SL 42 150 A4	2000	156	25	3
SL 42 200 A4	2000	206	25	3
SL 42 250 A4	2000	256	25	3
SL 42 300 A4	2000	306	25	3

Load



Type	1.5 m	2.0 m
	kN/m	kN/m
SL 42 075 A4	0.5	0.36
SL 42 100 A4	0.5	0.36
SL 42 150 A4	0.5	0.36
SL 42 200 A4	0.5	0.36
SL 42 250 A4	0.5	0.36
SL 42 300 A4	0.5	0.36

Load diagram, cable ladder, light duty SL42

- ① Permitted cable tray/ladder load in kN/m without man load
- ② Support width in m
- ③ Rail bend in mm at permitted kN/m
- Load curve with cable tray/ladder width in mm
- Strut bend curve according to support width
- ④ Load scheme during testing

Connector

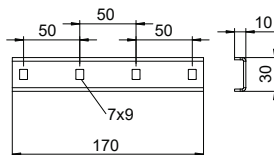


Type	Pack.	Weight		Item No.
		pcs	kg/100 pcs.	
SLV 42 A4	20	11.300		7103560

V4A Stainless steel, A4

/pc.

Straight connector as external connector to connect cable ladders and fittings with a side height of 25 mm.



90° bend

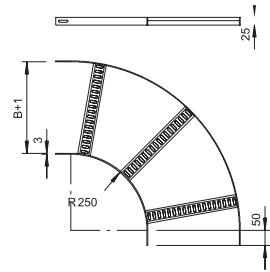
Type	Width mm	Rail thickness mm	Pack. pcs	Weight kg/100 pcs.	Item No.
SLB 90 42 075 A4	75	3	1	71.600	7098670
SLB 90 42 100 A4	100	3	1	77.000	7098672
SLB 90 42 150 A4	150	3	1	87.000	7098674
SLB 90 42 200 A4	200	3	1	97.000	7098676
SLB 90 42 250 A4	250	3	1	107.000	7098678
SLB 90 42 300 A4	300	3	1	117.000	7098680

V4A Stainless steel, A4

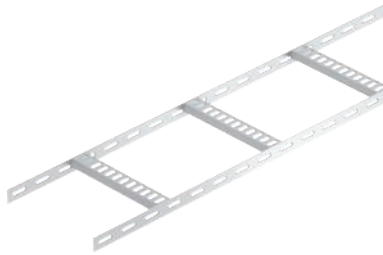
/pc.

GB Stained

Connectors should be ordered separately and in the appropriate quantity.



Cable ladder with trapezoidal rung, light-duty



Type	Rail		Pack. m	Weight kg/100 m	Item No.
	Width mm	thickness mm			
SL 42 075 ALU	75	3	2	41.000	7099722
SL 42 100 ALU	100	3	2	43.000	7099724
SL 42 150 ALU	150	3	2	47.500	7099726
SL 42 200 ALU	200	3	2	52.500	7099728
SL 42 250 ALU	250	3	2	57.000	7099730
SL 42 300 ALU	300	3	2	61.500	7099732

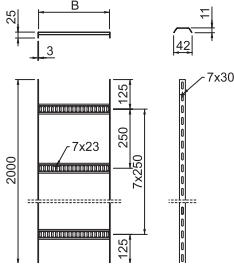
Alu Aluminium

/m

GB Stained

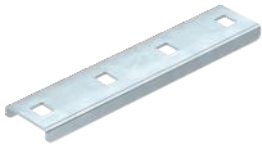
Shipbuilding cable ladder with perforated side rail of side height 25 mm with welded, perforated trapezoidal rungs which open in a downwards direction.

Dimensions



Type	Length mm	Dimension B mm	Side height mm	Rail
				thickness mm
SL 42 075 ALU	2000	81	25	3
SL 42 100 ALU	2000	106	25	3
SL 42 150 ALU	2000	156	25	3
SL 42 200 ALU	2000	206	25	3
SL 42 250 ALU	2000	256	25	3
SL 42 300 ALU	2000	306	25	3

Connector

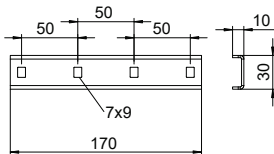


Type	Pack. pcs	Weight kg/100 pcs.	Item No.

Alu Aluminium

/pc.

Straight connector as external connector to connect cable ladders and fittings with a side height of 25 mm.



90° bend

Type	Width mm	Rail thickness mm	Pack. pcs	Weight kg/100 pcs.	Item No.
SLB 90 42 075ALU	75	3	1	27.000	7098684
SLB 90 42 100ALU	100	3	1	29.500	7098686
SLB 90 42 150ALU	150	3	1	34.500	7098688
SLB 90 42 200ALU	200	3	1	39.500	7098690
SLB 90 42 250ALU	250	3	1	44.500	7098692
SLB 90 42 300ALU	300	3	1	49.500	7098694

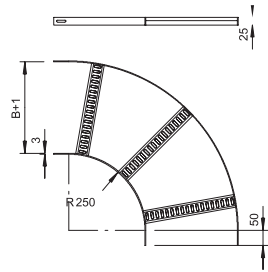
Alu Aluminium

GB Stained

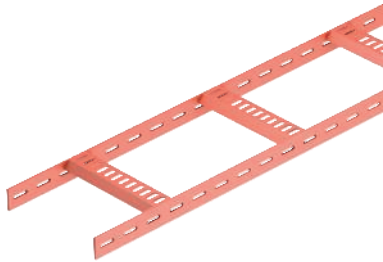
Connectors should be ordered separately and in the appropriate quantity.



/pc.



Cable ladder with trapezoidal rung, standard



Type	Width mm	Rail thickness mm	Pack. m	Weight kg/100 m	Item No.
SL 62 100 SG	100	5	3	299.000	7097212
SL 62 150 SG	150	5	3	315.670	7097220
SL 62 200 SG	200	5	3	332.340	7097239
SL 62 300 SG	300	5	3	365.670	7097247
SL 62 400 SG	400	5	3	398.670	7097255
SL 62 500 SG	500	5	3	432.000	7097263
SL 62 600 SG	600	5	3	465.340	7097271

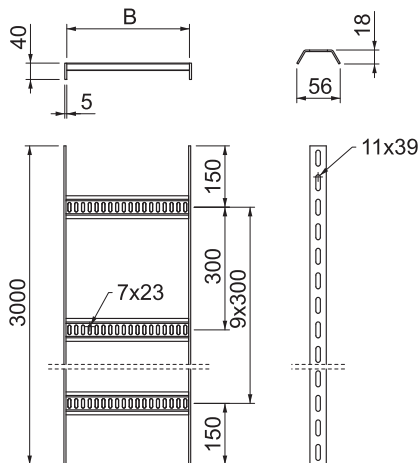
Sl Steel

SG Pre-treated for welding

/m

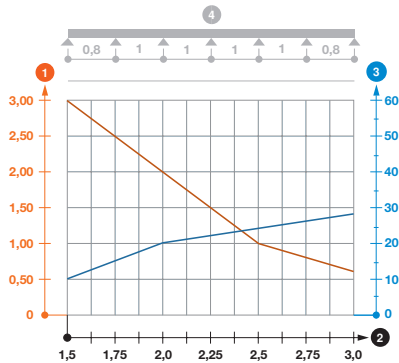
Shipbuilding cable ladder with perforated side rail of side height 40 mm with welded, perforated trapezoidal rungs which open in a downwards direction. Load tested according to IEC in conjunction with connector, type SLV. Welding primer type SIGMA-WELD 199, also available in white.

Dimensions



Type	Length mm	Dimension B mm	Side height mm	Rail thickness mm
SL 62 100 SG	3000	110	40	5
SL 62 150 SG	3000	160	40	5
SL 62 200 SG	3000	210	40	5
SL 62 300 SG	3000	310	40	5
SL 62 400 SG	3000	410	40	5
SL 62 500 SG	3000	510	40	5
SL 62 600 SG	3000	610	40	5

Load



Type	1.5 m kN/m	2.0 m kN/m	2.5 m kN/m	3.0 m kN/m
SL 62 100 SG	3	2	1	0.6
SL 62 150 SG	3	2	1	0.6
SL 62 200 SG	3	2	1	0.6
SL 62 300 SG	3	2	1	0.6
SL 62 400 SG	3	2	1	0.6
SL 62 500 SG	3	2	1	0.6
SL 62 600 SG	3	2	1	0.6

Load diagram, cable ladder SL62

- 1 Permitted cable tray/ladder load in kN/m without man load
- 2 Support width in m
- 3 Rail bend in mm at permitted kN/m
- Load curve with cable tray/ladder width in mm
- Strut bend curve according to support width
- 4 Load scheme during testing

90° bend

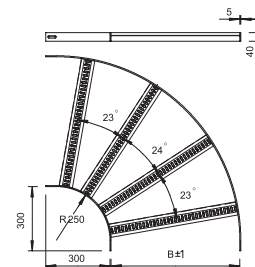
Type	Width mm	Rail thickness mm	Pack. Weight		Item No.
			pcs	kg/100 pcs.	
SLB 90 62 100 SG	100	5	1	204.000	7098707
SLB 90 62 200 SG	200	5	1	258.400	7098723
SLB 90 62 300 SG	300	5	1	311.000	7098731
SLB 90 62 400 SG	400	5	1	363.000	7098758
SLB 90 62 500 SG	500	5	1	421.000	7098766
SLB 90 62 600 SG	600	5	1	475.000	7098774

Sl Steel

SG Pre-treated for welding

/pc.

Connectors should be ordered separately and in the appropriate quantity.



Rung, standard

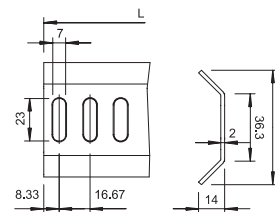
Type	Length mm	Pack. Weight		Item No.
		m	kg/100 m	
SLSP 62 300 SG	3000	3	98.870	7102674

Sl Steel

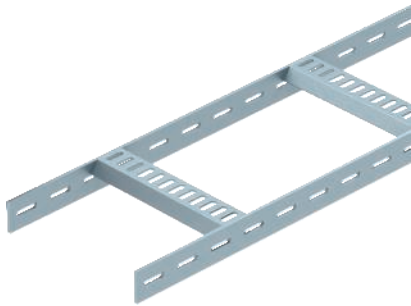
SG Pre-treated for welding

/m

Rung with 7 x 23 mm perforation. For welding in cable ladders, type SL 62, and for support constructions.



Cable ladder with trapezoidal rung, standard



Type	Width mm	Rail thickness mm	Pack. m	Weight kg/100 m	Item No.
SL 62 100 FT	100	5	3	307.300	7097409
SL 62 150 FT	150	5	3	325.000	7097417
SL 62 200 FT	200	5	3	342.700	7097425
SL 62 300 FT	300	5	3	378.000	7097433
SL 62 400 FT	400	5	3	413.000	7097441
SL 62 500 FT	500	5	3	448.300	7097468
SL 62 600 FT	600	5	3	483.700	7097476

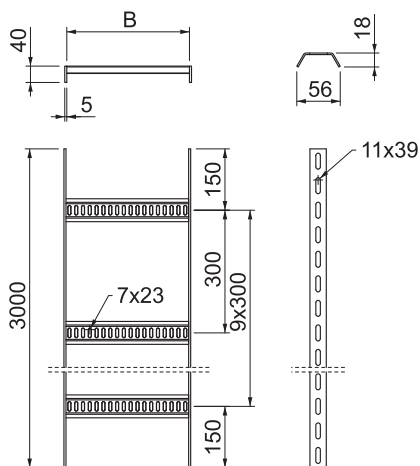
Sl Steel

FT Hot-dip galvanised

/m

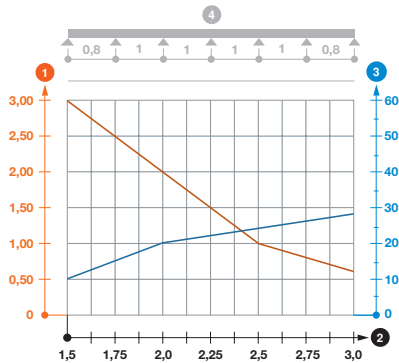
Shipbuilding cable ladder with perforated side rail of side height 40 mm with welded, perforated trapezoidal rungs which open in a downwards direction. Load tested according to IEC in conjunction with connector, type SLV.

Dimensions



Type	Length mm	Dimension B mm	Side height mm	Rail thickness mm
SL 62 100 FT	3000	110	40	5
SL 62 150 FT	3000	160	40	5
SL 62 200 FT	3000	210	40	5
SL 62 300 FT	3000	310	40	5
SL 62 400 FT	3000	410	40	5
SL 62 500 FT	3000	510	40	5
SL 62 600 FT	3000	610	40	5

Load



Type	1.5 m kN/m	2.0 m kN/m	2.5 m kN/m	3.0 m kN/m
SL 62 100 FT	3	2	1	0.6
SL 62 150 FT	3	2	1	0.6
SL 62 200 FT	3	2	1	0.6
SL 62 300 FT	3	2	1	0.6
SL 62 400 FT	3	2	1	0.6
SL 62 500 FT	3	2	1	0.6
SL 62 600 FT	3	2	1	0.6

Load diagram, cable ladder SL62

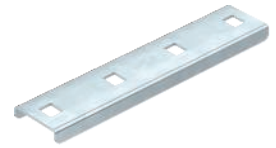
- ① Permitted cable tray/ladder load in kN/m without man load
- ② Support width in m
- ③ Rail bend in mm at permitted kN/m
- Load curve with cable tray/ladder width in mm
- Strut bend curve according to support width
- ④ Load scheme during testing

Connector

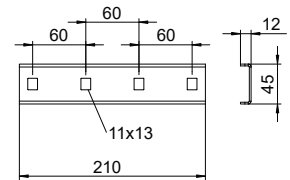


Type	Pack. pcs	Weight kg/100 pcs.	Item No.
SLV 62 FT	10	20.900	7103548

St Steel /pc.
FT Hot-dip galvanised



Straight connector as external connector to connect cable ladders and fittings with a side height of 40 mm.

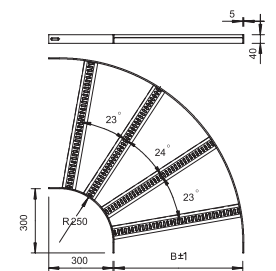
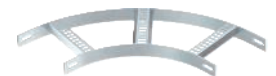


90° bend

Type	Width mm	Rail thickness mm	Pack. pcs	Weight kg/100 pcs.	Item No.
SLB 90 62 100 FT	100	5	1	219.000	7098855
SLB 90 62 200 FT	200	5	1	278.000	7098871
SLB 90 62 300 FT	300	5	1	336.000	7098898
SLB 90 62 400 FT	400	5	1	372.000	7098901
SLB 90 62 500 FT	500	5	1	452.000	7098928
SLB 90 62 600 FT	600	5	1	511.000	7098936

St Steel /pc.
FT Hot-dip galvanised

Connectors should be ordered separately and in the appropriate quantity.

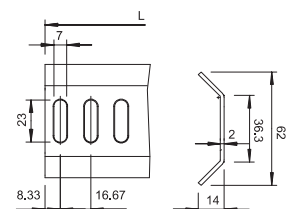
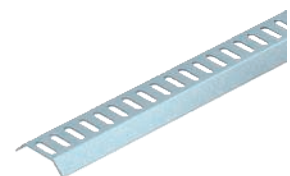


Rung, standard

Type	Length mm	Pack. m	Weight kg/100 m	Item No.
SLSP 62 300 FT	3000	3	104.800	7102771

St Steel /m
FT Hot-dip galvanised

Rung with 7 x 23 mm perforation. For welding in cable ladders, type SL 62, and for support constructions.



Cable ladder with trapezoidal rung, standard



Type	Rail		Pack. m	Weight kg/100 m	Item No.
	Width mm	thickness mm			
SL 62 100 A2	100	5	3	299.000	7097094
SL 62 200 A2	200	5	3	332.340	7097096
SL 62 300 A2	300	5	3	365.340	7097098
SL 62 400 A2	400	5	3	398.670	7097100
SL 62 500 A2	500	5	3	432.000	7097102
SL 62 600 A2	600	5	3	465.340	7097104

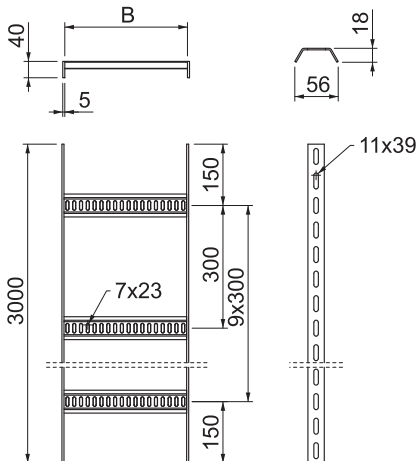
V2A Stainless steel, A2

/m

GB Stained

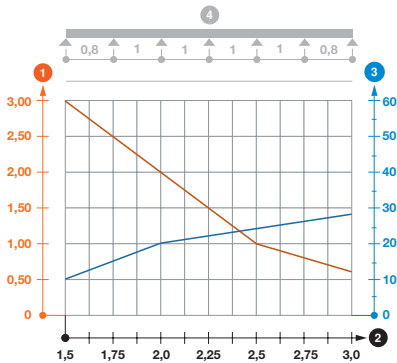
Shipbuilding cable ladder with perforated side rail of side height 40 mm with welded, perforated trapezoidal rungs which open in a downwards direction. Load tested according to IEC in conjunction with connector, type SLV.

Dimensions



Type	Length mm	Dimension B mm	Side height mm	Rail	
				thickness mm	width mm
SL 62 100 A2	3000	110	40	5	56
SL 62 200 A2	3000	210	40	5	56
SL 62 300 A2	3000	310	40	5	56
SL 62 400 A2	3000	410	40	5	56
SL 62 500 A2	3000	510	40	5	56
SL 62 600 A2	3000	610	40	5	56

Load



Type	1.5 m	2.0 m	2.5 m	3.0 m
	kN/m	kN/m	kN/m	kN/m
SL 62 100 A2	3	2	1	0.6
SL 62 200 A2	3	2	1	0.6
SL 62 300 A2	3	2	1	0.6
SL 62 400 A2	3	2	1	0.6
SL 62 500 A2	3	2	1	0.6
SL 62 600 A2	3	2	1	0.6

Load diagram, cable ladder SL62

- ① Permitted cable tray/ladder load in kN/m without man load
- ② Support width in m
- ③ Rail bend in mm at permitted kN/m
- Load curve with cable tray/ladder width in mm
- Strut bend curve according to support width
- ④ Load scheme during testing

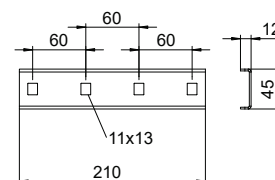
Connector

Type	Pack. pcs	Weight		Item No.
		kg/100 pcs.		
SLV 62 A4	10	14.600		7103568

V4A Stainless steel, A4

/pc.

Straight connector as external connector to connect cable ladders and fittings with a side height of 40 mm.



90° bend

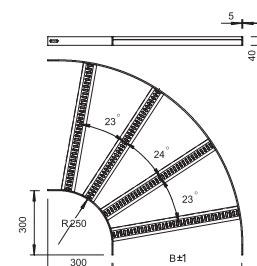
Type	Width mm	Rail thickness mm	Pack. pcs	Weight		Item No.
				kg/100 pcs.		
SLB 90 62 100 A2	100	5	1	206.800		7099150
SLB 90 62 200 A2	200	5	1	261.700		7099152
SLB 90 62 300 A2	300	5	1	316.700		7099154
SLB 90 62 400 A2	400	5	1	371.600		7099156
SLB 90 62 500 A2	500	5	1	426.500		7099158
SLB 90 62 600 A2	600	5	1	481.400		7099160

V2A Stainless steel, A2

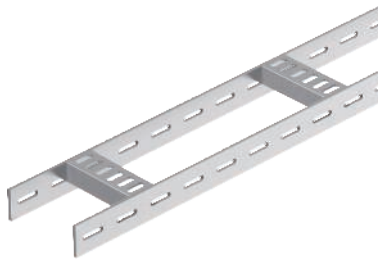
/pc.

GB Stained

Connectors should be ordered separately and in the appropriate quantity.



Cable ladder with trapezoidal rung, standard



Type	Rail		Pack. m	Weight kg/100 m	Item No.
	Width mm	thickness mm			
SL 62 100 A4	100	5	3	299.000	7097358
SL 62 200 A4	200	5	3	332.340	7097360
SL 62 300 A4	300	5	3	365.340	7097362
SL 62 400 A4	400	5	3	398.670	7097364
SL 62 500 A4	500	5	3	432.000	7097366
SL 62 600 A4	600	5	3	465.340	7097368

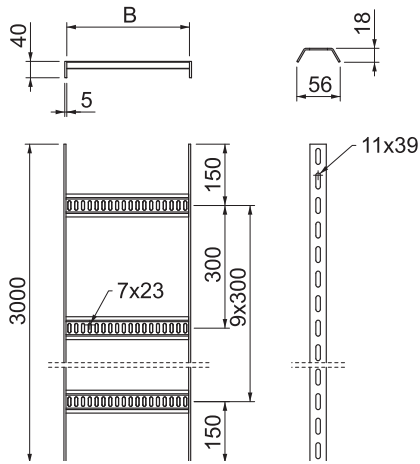
V4A Stainless steel, A4

/m

GB Stained

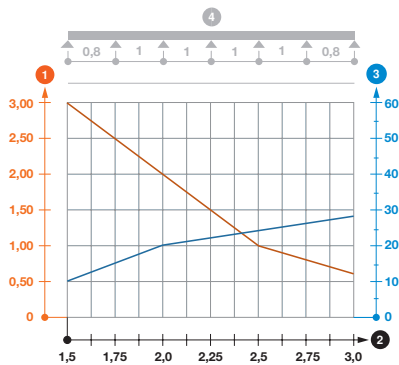
Shipbuilding cable ladder with perforated side rail of side height 40 mm with welded, perforated trapezoidal rungs which open in a downwards direction. Load tested according to IEC in conjunction with connector, type SLV.

Dimensions



Type	Length mm	Dimension B mm	Side height mm	Rail
				thickness mm
SL 62 100 A4	3000	110	40	5
SL 62 200 A4	3000	210	40	5
SL 62 300 A4	3000	310	40	5
SL 62 400 A4	3000	410	40	5
SL 62 500 A4	3000	510	40	5
SL 62 600 A4	3000	610	40	5

Load



Type	1.5 m	2.0 m	2.5 m	3.0 m
	kN/m	kN/m	kN/m	kN/m
SL 62 100 A4	3	2	1	0.6
SL 62 200 A4	3	2	1	0.6
SL 62 300 A4	3	2	1	0.6
SL 62 400 A4	3	2	1	0.6
SL 62 500 A4	3	2	1	0.6
SL 62 600 A4	3	2	1	0.6

Load diagram, cable ladder SL62

- ① Permitted cable tray/ladder load in kN/m without man load
- ② Support width in m
- ③ Rail bend in mm at permitted kN/m
- Load curve with cable tray/ladder width in mm
- Strut bend curve according to support width
- ④ Load scheme during testing

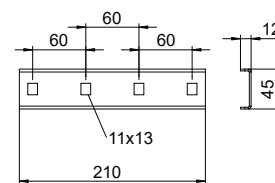
Connector

Type	Pack. pcs	Weight		Item No.
		kg/100 pcs.		
SLV 62 A4	10	14.600		7103568

V4A Stainless steel, A4

/pc.

Straight connector as external connector to connect cable ladders and fittings with a side height of 40 mm.



90° bend

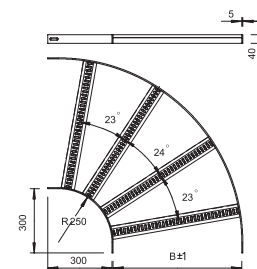
Type	Width mm	Rail thickness mm	Pack. pcs	Weight		Item No.
				kg/100 pcs.		
SLB 90 62 100 A4	100	5	1	209.000		7099168
SLB 90 62 200 A4	200	5	1	265.000		7099170
SLB 90 62 300 A4	300	5	1	321.000		7099172
SLB 90 62 400 A4	400	5	1	376.000		7099174
SLB 90 62 500 A4	500	5	1	432.000		7099176
SLB 90 62 600 A4	600	5	1	488.000		7099178

V4A Stainless steel, A4

/pc.

GB Stained

Connectors should be ordered separately and in the appropriate quantity.



Cable ladder with trapezoidal rung, standard



Type	Width mm	Rail thickness mm	Pack. m	Weight kg/100 m	Item No.
SL 62 100 ALU	100	5	3	99.800	7099752
SL 62 200 ALU	200	5	3	111.070	7099754
SL 62 300 ALU	300	5	3	122.300	7099756
SL 62 400 ALU	400	5	3	133.570	7099758
SL 62 500 ALU	500	5	3	144.833	7099760
SL 62 600 ALU	600	5	3	156.100	7099762

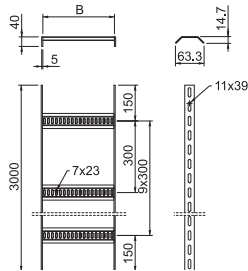
Alu Aluminium

/m

GB Stained

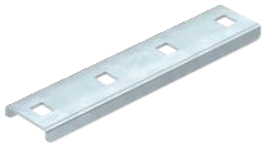
Shipbuilding cable ladder with perforated side rail of side height 40 mm with welded, perforated trapezoidal rungs which open in a downwards direction.

Dimensions



Type	Length mm	Dimension B mm	Side height mm	Rail thickness mm
SL 62 100 ALU	3000	110	40	5
SL 62 200 ALU	3000	210	40	5
SL 62 300 ALU	3000	310	40	5
SL 62 400 ALU	3000	410	40	5
SL 62 500 ALU	3000	510	40	5
SL 62 600 ALU	3000	610	40	5

Connector

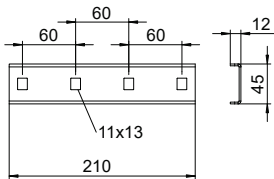


Type	Pack. pcs	Weight kg/100 pcs.	Item No.
SLV 62 ALU	10	12.500	7103554

Alu Aluminium

/pc.

Straight connector as external connector to connect cable ladders and fittings with a side height of 40 mm.



90° bend

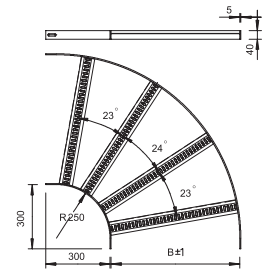
Type	Width mm	Rail thickness mm	Pack. Weight		Item No.
			pcs	kg/100 pcs.	
SLB 90 62 100ALU	100	5	1	69.600	7099186
SLB 90 62 200ALU	200	5	1	88.100	7099188
SLB 90 62 300ALU	300	5	1	106.600	7099190
SLB 90 62 400ALU	400	5	1	125.100	7099192
SLB 90 62 500ALU	500	5	1	143.600	7099194
SLB 90 62 600ALU	600	5	1	162.100	7099196

Alu Aluminium

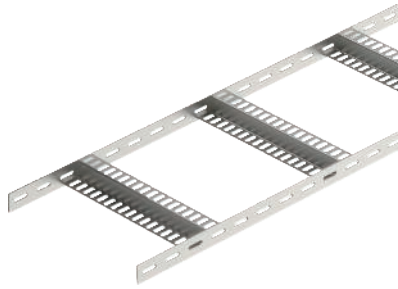
GB Stained

/pc.

Connectors should be ordered separately and in the appropriate quantity.



Cable ladder with Z rung, light-duty



Type	Rail		Pack. m	Weight kg/100 m	Item No.
	Width mm	thickness mm			
SLZ L 100 A2	100	3	3	167.000	7098062
SLZ L 150 A2	150	3	3	177.340	7098064
SLZ L 200 A2	200	3	3	187.670	7098066
SLZ L 300 A2	300	3	3	208.670	7098068
SLZ L 400 A2	400	3	3	229.170	7098070
SLZ L 500 A2	500	3	3	250.000	7098072
SLZ L 600 A2	600	3	3	270.670	7098074

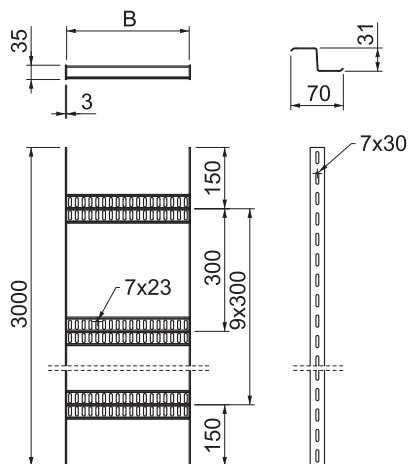
V2A Stainless steel, A2

/m

GB Stained

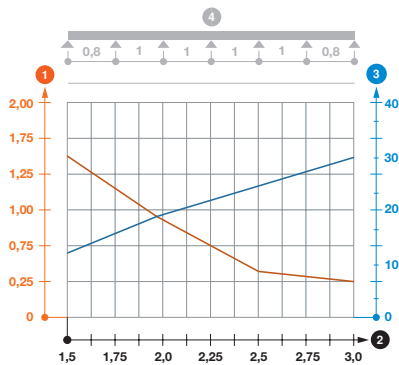
Light-duty shipbuilding cable ladder with perforated side rail of side height 35 mm with welded, perforated Z rungs. Load tested according to IEC in conjunction with connector, type SLV.

Dimensions



Type	Length mm	Dimension B mm	Side height mm	Rail
				thickness mm
SLZ L 100 A2	3000	106	35	3
SLZ L 150 A2	3000	156	35	3
SLZ L 200 A2	3000	206	35	3
SLZ L 300 A2	3000	306	35	3
SLZ L 400 A2	3000	406	35	3
SLZ L 500 A2	3000	506	35	3
SLZ L 600 A2	3000	606	35	3

Load



Type	1.5 m	2.0 m	2.5 m	3.0 m
	kN/m	kN/m	kN/m	kN/m
SLZ L 100 A2	1.5	0.85	0.35	0.25
SLZ L 150 A2	1.5	0.85	0.35	0.25
SLZ L 200 A2	1.5	0.85	0.35	0.25
SLZ L 300 A2	1.5	0.85	0.35	0.25
SLZ L 400 A2	1.5	0.85	0.35	0.25
SLZ L 500 A2	1.5	0.85	0.35	0.25
SLZ L 600 A2	1.5	0.85	0.35	0.25

Load diagram, cable ladder SLZ L

- 1 Permitted cable tray/ladder load in kN/m without man load
- 2 Support width in m
- 3 Rail bend in mm at permitted kN/m
- Load curve with cable tray/ladder width in mm
- Strut bend curve according to support width
- 4 Load scheme during testing

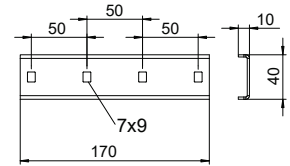
Connector

Type	Pack. pcs	Weight kg/100 pcs.	Item No.
SLV 52 A4	10	14.000	7103564

V4A Stainless steel, A4

/pc.

Straight connector as external connector to connect cable ladders and fittings with a side height of 35 mm.



90° bend

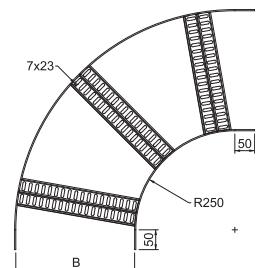
Type	Width mm	Rail thickness mm	Pack. pcs	Weight kg/100 pcs.	Item No.
SLZB L 90 100 A2	100	3	1	113.000	7099241
SLZB L 90 150 A2	150	3	1	129.000	7099242
SLZB L 90 200 A2	200	3	1	145.000	7099243
SLZB L 90 300 A2	300	3	1	176.000	7099245
SLZB L 90 400 A2	400	3	1	208.000	7099247
SLZB L 90 500 A2	500	3	1	240.000	7099249
SLZB L 90 600 A2	600	3	1	272.000	7099251

V2A Stainless steel, A2

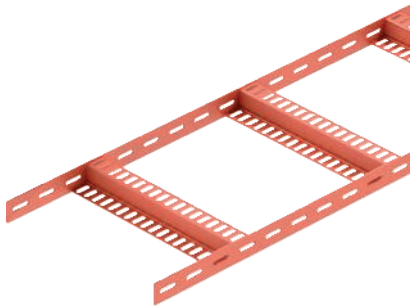
/pc.

GB Stained

Connectors should be ordered separately and in the appropriate quantity.



Cable ladder with Z rung, light-duty



Type	Width mm	Rail thickness mm	Pack. m	Weight kg/100 m	Item No.
SLZ L 100 SG	100	3	3	167.000	7098032
SLZ L 150 SG	150	3	3	177.340	7098034
SLZ L 200 SG	200	3	3	187.670	7098036
SLZ L 300 SG	300	3	3	208.670	7098038
SLZ L 400 SG	400	3	3	229.340	7098040
SLZ L 500 SG	500	3	3	250.000	7098042
SLZ L 600 SG	600	3	3	270.670	7098044

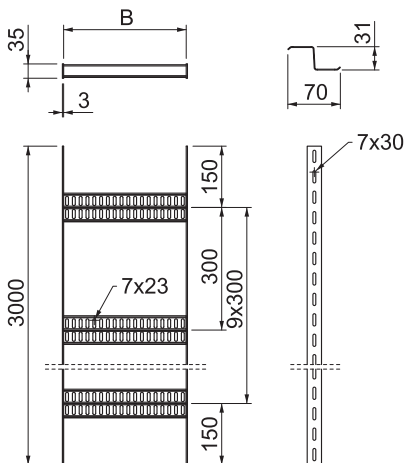
Sl Steel

SG Pre-treated for welding

/m

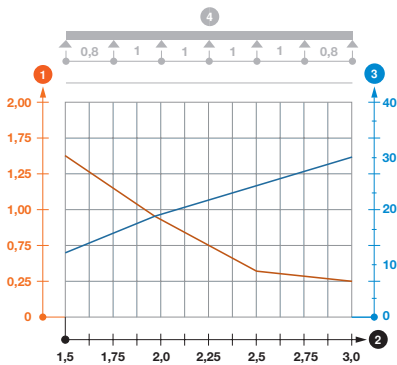
Light-duty shipbuilding cable ladder with perforated side rail of side height 35 mm with welded, perforated Z rungs. Load tested according to IEC in conjunction with connector, type SLV. Welding primer type SIGMA-WELD 199, also available in white.

Dimensions



Type	Length mm	Dimension B mm	Side height mm	Rail thickness mm
SLZ L 100 SG	3000	106	35	3
SLZ L 150 SG	3000	156	35	3
SLZ L 200 SG	3000	206	35	3
SLZ L 300 SG	3000	306	35	3
SLZ L 400 SG	3000	406	35	3
SLZ L 500 SG	3000	506	35	3
SLZ L 600 SG	3000	606	35	3

Load



Type	1.5 m kN/m	2.0 m kN/m	2.5 m kN/m	3.0 m kN/m
SLZ L 100 SG	1.5	0.85	0.35	0.25
SLZ L 150 SG	1.5	0.85	0.35	0.25
SLZ L 200 SG	1.5	0.85	0.35	0.25
SLZ L 300 SG	1.5	0.85	0.35	0.25
SLZ L 400 SG	1.5	0.85	0.35	0.25
SLZ L 500 SG	1.5	0.85	0.35	0.25
SLZ L 600 SG	1.5	0.85	0.35	0.25

Load diagram, cable ladder SLZ L

- 1 Permitted cable tray/ladder load in kN/m without man load
- 2 Support width in m
- 3 Rail bend in mm at permitted kN/m
- Load curve with cable tray/ladder width in mm
- Strut bend curve according to support width
- 4 Load scheme during testing

90° bend

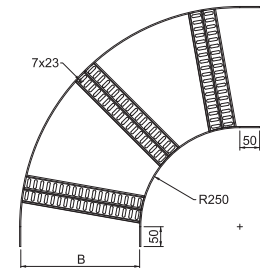
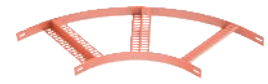
Type	Rail		Pack. pcs	Weight kg/100 pcs.	Item No.
	Width mm	thickness mm			
SLZB L 90 100 SG	100	3	1	111.000	7099201
SLZB L 90 150 SG	150	3	1	127.000	7099202
SLZB L 90 200 SG	200	3	1	143.000	7099203
SLZB L 90 300 SG	300	3	1	174.000	7099205
SLZB L 90 400 SG	400	3	1	206.000	7099208
SLZB L 90 500 SG	500	3	1	237.000	7099210
SLZB L 90 600 SG	600	3	1	269.000	7099212

St Steel

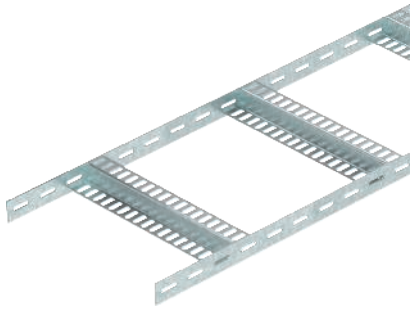
SG Pre-treated for welding

/pc.

Connectors should be ordered separately and in the appropriate quantity.



Cable ladder with Z rung, light-duty



Type	Width mm	Rail thickness mm	Pack. m	Weight kg/100 m	Item No.
SLZ L 100 FT	100	3	3	175.340	7098002
SLZ L 150 FT	150	3	3	186.670	7098004
SLZ L 200 FT	200	3	3	198.340	7098006
SLZ L 300 FT	300	3	3	221.670	7098008
SLZ L 400 FT	400	3	3	245.000	7098010
SLZ L 500 FT	500	3	3	268.340	7098012
SLZ L 600 FT	600	3	3	291.670	7098014

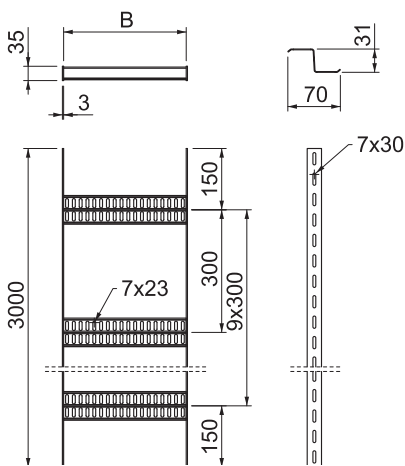
St Steel

FT Hot-dip galvanized

/m

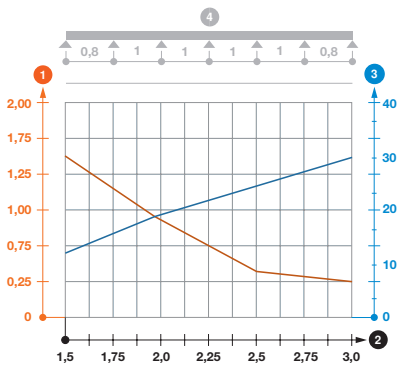
Light-duty shipbuilding cable ladder with perforated side rail of side height 35 mm with welded, perforated Z rungs. Load tested according to IEC in conjunction with connector, type SLV.

Dimensions



Type	Length mm	Dimension B mm	Side height mm	Rail thickness mm
SLZ L 100 FT	3000	106	35	3
SLZ L 150 FT	3000	156	35	3
SLZ L 200 FT	3000	206	35	3
SLZ L 300 FT	3000	306	35	3
SLZ L 400 FT	3000	406	35	3
SLZ L 500 FT	3000	506	35	3
SLZ L 600 FT	3000	606	35	3

Load



Type	1.5 m kN/m	2.0 m kN/m	2.5 m kN/m	3.0 m kN/m
SLZ L 100 FT	1.5	0.85	0.35	0.25
SLZ L 150 FT	1.5	0.85	0.35	0.25
SLZ L 200 FT	1.5	0.85	0.35	0.25
SLZ L 300 FT	1.5	0.85	0.35	0.25
SLZ L 400 FT	1.5	0.85	0.35	0.25
SLZ L 500 FT	1.5	0.85	0.35	0.25
SLZ L 600 FT	1.5	0.85	0.35	0.25

Load diagram, cable ladder SLZ L

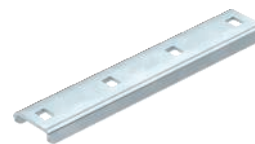
- 1 Permitted cable tray/ladder load in kN/m without man load
- 2 Support width in m
- 3 Rail bend in mm at permitted kN/m
- Load curve with cable tray/ladder width in mm
- Strut bend curve according to support width
- 4 Load scheme during testing

Connector

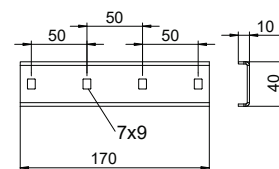


Type	Pack. pcs	Weight kg/100 pcs.	Item No.
SLV 52 FT	10	14.700	7103544

St Steel /pc.
FT Hot-dip galvanised



Straight connector as external connector to connect cable ladders and fittings with a side height of 35 mm.

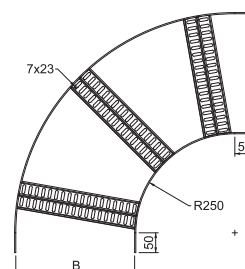
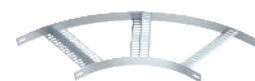


90° bend

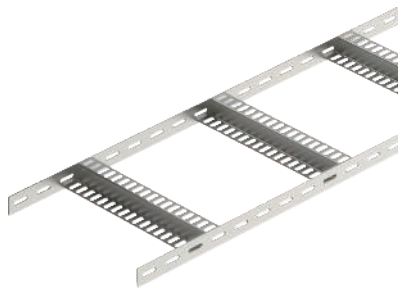
Type	Width mm	Rail thickness mm	Pack. pcs	Weight kg/100 pcs.	Item No.
SLZB L 90 100 FT	100	3	1	119.400	7099221
SLZB L 90 150 FT	150	3	1	136.400	7099222
SLZB L 90 200 FT	200	3	1	153.300	7099224
SLZB L 90 300 FT	300	3	1	187.200	7099226
SLZB L 90 400 FT	400	3	1	221.000	7099228
SLZB L 90 500 FT	500	3	1	254.900	7099230
SLZB L 90 600 FT	600	3	1	288.800	7099232

St Steel /pc.
FT Hot-dip galvanised

Connectors should be ordered separately and in the appropriate quantity.



Cable ladder with Z rung, light-duty



Type	Width mm	Rail thickness mm	Pack. m	Weight kg/100 m	Item No.
SLZ L 100 A4	100	3	3	167.000	7098082
SLZ L 150 A4	150	3	3	177.340	7098084
SLZ L 200 A4	200	3	3	187.670	7098086
SLZ L 300 A4	300	3	3	208.670	7098088
SLZ L 400 A4	400	3	3	229.340	7098090
SLZ L 500 A4	500	3	3	250.000	7098092
SLZ L 600 A4	600	3	3	270.670	7098094

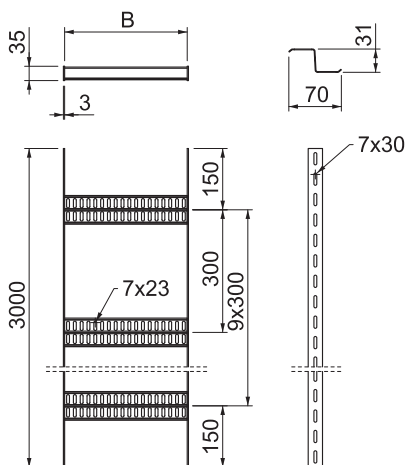
V4A Stainless steel, A4

/m

GB Stained

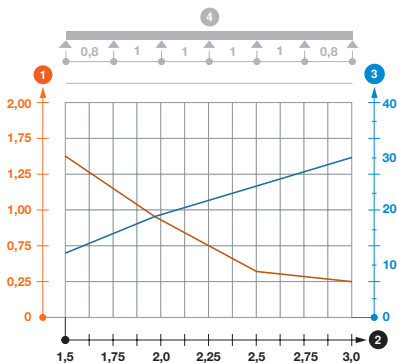
Light-duty shipbuilding cable ladder with perforated side rail of side height 35 mm with welded, perforated Z rungs. Load tested according to IEC in conjunction with connector, type SLV.

Dimensions



Type	Length mm	Dimension B mm	Side height mm	Rail thickness mm
SLZ L 100 A4	3000	106	35	3
SLZ L 150 A4	3000	156	35	3
SLZ L 200 A4	3000	206	35	3
SLZ L 300 A4	3000	306	35	3
SLZ L 400 A4	3000	406	35	3
SLZ L 500 A4	3000	506	35	3
SLZ L 600 A4	3000	606	35	3

Load



Type	1.5 m kN/m	2.0 m kN/m	2.5 m kN/m	3.0 m kN/m
SLZ L 100 A4	1.5	0.85	0.35	0.25
SLZ L 150 A4	1.5	0.85	0.35	0.25
SLZ L 200 A4	1.5	0.85	0.35	0.25
SLZ L 300 A4	1.5	0.85	0.35	0.25
SLZ L 400 A4	1.5	0.85	0.35	0.25
SLZ L 500 A4	1.5	0.85	0.35	0.25
SLZ L 600 A4	1.5	0.85	0.35	0.25

Load diagram, cable ladder SLZ L

- 1 Permitted cable tray/ladder load in kN/m without man load
- 2 Support width in m
- 3 Rail bend in mm at permitted kN/m
- Load curve with cable tray/ladder width in mm
- Strut bend curve according to support width
- 4 Load scheme during testing

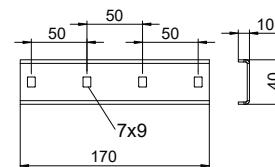
Connector

Type	Pack. pcs	Weight kg/100 pcs.	Item No.
SLV 52 A4	10	14.000	7103564

V4A Stainless steel, A4

/pc.

Straight connector as external connector to connect cable ladders and fittings with a side height of 35 mm.



90° bend

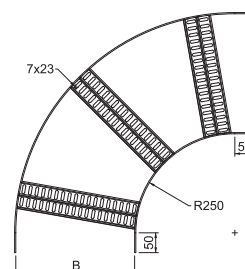
Type	Width mm	Rail thickness mm	Pack. pcs	Weight kg/100 pcs.	Item No.
SLZB L 90 100 A4	100	3	1	114.000	7099261
SLZB L 90 150 A4	150	3	1	130.200	7099262
SLZB L 90 200 A4	200	3	1	146.400	7099263
SLZB L 90 300 A4	300	3	1	178.700	7099265
SLZB L 90 400 A4	400	3	1	211.000	7099268
SLZB L 90 500 A4	500	3	1	243.400	7099270
SLZB L 90 600 A4	600	3	1	275.700	7099272

V4A Stainless steel, A4

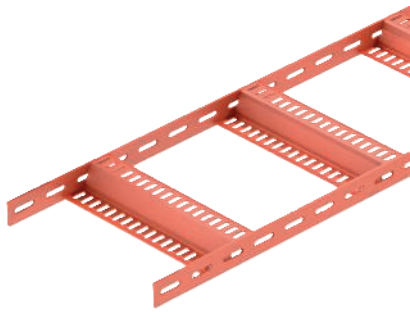
/pc.

GB Stained

Connectors should be ordered separately and in the appropriate quantity.



Cable ladder with Z rung, standard



Type	Width mm	Rail thickness mm	Pack. m	Weight kg/100 m	Item No.
SLZ 100 SG	100	5	3	319.000	7098162
SLZ 200 SG	200	5	3	372.340	7098164
SLZ 300 SG	300	5	3	425.670	7098166
SLZ 400 SG	400	5	3	479.000	7098168
SLZ 500 SG	500	5	3	532.340	7098170
SLZ 600 SG	600	5	3	585.666	7098172
SLZ 700 SG	700	5	3	639.000	7098174
SLZ 800 SG	800	5	3	692.333	7098176
SLZ 900 SG	900	5	3	745.666	7098178
SLZ 1000 SG	1000	5	3	799.000	7098180
SLZ 1200 SG	1200	5	3	905.333	7098182

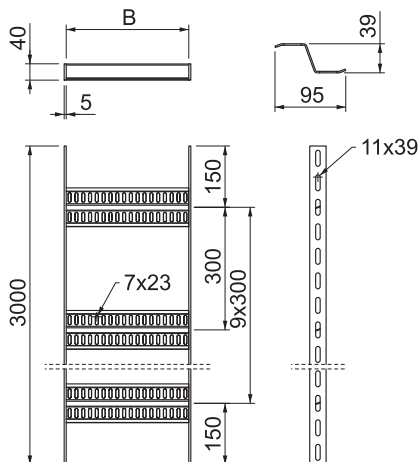
Sl Steel

SG Pre-treated for welding

/m

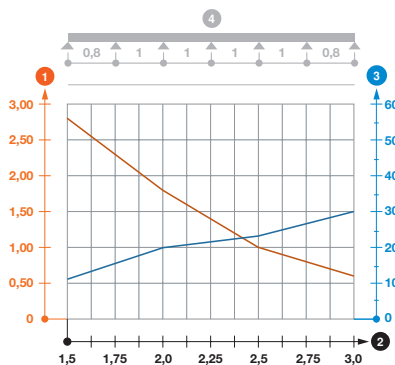
Shipbuilding cable ladder with perforated side rail of side height 40 mm with welded, perforated Z rungs. Load tested according to IEC in conjunction with connector, type SLV. Welding primer type SIGMA-WELD 199, also available in white.

Dimensions



Type	Length mm	Dimension B mm	Side height mm	Rail thickness mm
SLZ 100 SG	3000	110	40	5
SLZ 200 SG	3000	210	40	5
SLZ 300 SG	3000	310	40	5
SLZ 400 SG	3000	410	40	5
SLZ 500 SG	3000	510	40	5
SLZ 600 SG	3000	610	40	5
SLZ 700 SG	3000	710	40	5
SLZ 800 SG	3000	810	40	5
SLZ 900 SG	3000	910	40	5
SLZ 1000 SG	3000	1010	40	5
SLZ 1200 SG	3000	1210	40	5

Load



Type	1.5 m kN/m	2.0 m kN/m	2.5 m kN/m	3.0 m kN/m
SLZ 100 SG	2.8	1.75	1	0.6
SLZ 200 SG	2.8	1.75	1	0.6
SLZ 300 SG	2.8	1.75	1	0.6
SLZ 400 SG	2.8	1.75	1	0.6
SLZ 500 SG	2.8	1.75	1	0.6
SLZ 600 SG	2.8	1.75	1	0.6
SLZ 700 SG	2.8	1.75	1	0.6
SLZ 800 SG	2.8	1.75	1	0.6
SLZ 900 SG	2.8	1.75	1	0.6
SLZ 1000 SG	2.8	1.75	1	0.6
SLZ 1200 SG	2.8	1.75	1	0.6

Load diagram, cable ladder SLZ

- 1 Permitted cable tray/ladder load in kN/m without man load
- 2 Support width in m
- 3 Rail bend in mm at permitted kN/m
- Load curve with cable tray/ladder width in mm
- Strut bend curve according to support width
- 4 Load scheme during testing

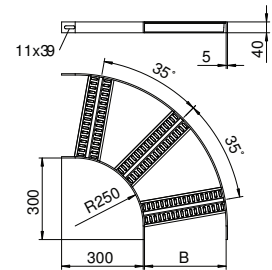
90° bend

Type	Width mm	Rail thickness mm	Pack. pcs	Weight kg/100 pcs.	Item No.
SLZB 90 100 SG	100	5	1	222.200	7098976
SLZB 90 200 SG	200	5	1	295.100	7098978
SLZB 90 300 SG	300	5	1	338.600	7098980
SLZB 90 400 SG	400	5	1	441.300	7098982
SLZB 90 500 SG	500	5	1	514.000	7098984
SLZB 90 600 SG	600	5	1	586.600	7098986
SLZB 90 700 SG	700	5	1	771.400	7098988
SLZB 90 800 SG	800	5	1	860.100	7098990
SLZB 90 900 SG	900	5	1	945.000	7098992
SLZB 90 1000 SG	1000	5	1	1,031.200	7098994
SLZB 90 1200 SG	1200	5	1	1,214.600	7098996

Sl Steel

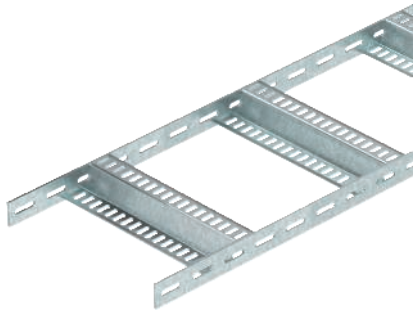
SG Pre-treated for welding

Connectors should be ordered separately and in the appropriate quantity.



/pc.

Cable ladder with Z rung, standard



Type	Width mm	Rail thickness mm	Pack. m	Weight kg/100 m	Item No.
SLZ 100 FT	100	5	3	328.700	7098132
SLZ 150 FT	150	5	3	357.000	7098133
SLZ 200 FT	200	5	3	385.333	7098134
SLZ 300 FT	300	5	3	441.666	7098136
SLZ 400 FT	400	5	3	498.166	7098138
SLZ 500 FT	500	5	3	554.666	7098140
SLZ 600 FT	600	5	3	611.333	7098142
SLZ 700 FT	700	5	3	667.666	7098144
SLZ 800 FT	800	5	3	724.333	7098146
SLZ 900 FT	900	5	3	780.666	7098148
SLZ 1000 FT	1000	5	3	837.333	7098150
SLZ 1200 FT	1200	5	3	950.333	7098152

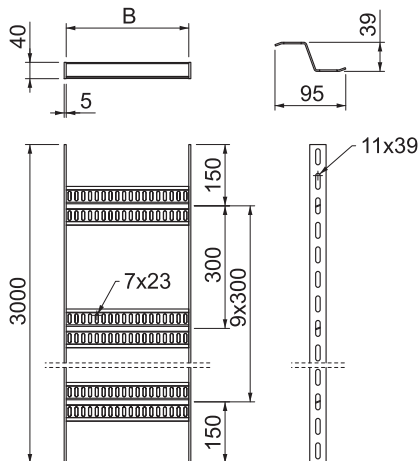
St Steel

FT Hot-dip galvanised

/m

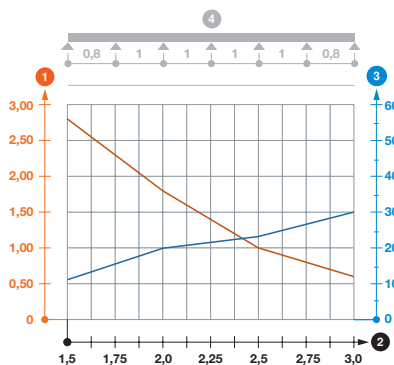
Shipbuilding cable ladder with perforated side rail of side height 40 mm with welded, perforated Z rungs. Load tested according to IEC in conjunction with connector, type SLV.

Dimensions



Type	Length mm	Dimension B mm	Side height mm	Rail thickness mm
SLZ 100 FT	3000	110	40	5
SLZ 150 FT	3000	160	40	5
SLZ 200 FT	3000	210	40	5
SLZ 300 FT	3000	310	40	5
SLZ 400 FT	3000	410	40	5
SLZ 500 FT	3000	510	40	5
SLZ 600 FT	3000	610	40	5
SLZ 700 FT	3000	710	40	5
SLZ 800 FT	3000	810	40	5
SLZ 900 FT	3000	910	40	5
SLZ 1000 FT	3000	1010	40	5
SLZ 1200 FT	3000	1210	40	5

Load



Type	1.5 m kN/m	2.0 m kN/m	2.5 m kN/m	3.0 m kN/m
SLZ 100 FT	2.8	1.75	1	0.6
SLZ 150 FT	2.8	1.75	1	0.6
SLZ 200 FT	2.8	1.75	1	0.6
SLZ 300 FT	2.8	1.75	1	0.6
SLZ 400 FT	2.8	1.75	1	0.6
SLZ 500 FT	2.8	1.75	1	0.6
SLZ 600 FT	2.8	1.75	1	0.6
SLZ 700 FT	2.8	1.75	1	0.6
SLZ 800 FT	2.8	1.75	1	0.6
SLZ 900 FT	2.8	1.75	1	0.6
SLZ 1000 FT	2.8	1.75	1	0.6
SLZ 1200 FT	2.8	1.75	1	0.6

Load diagram, cable ladder SLZ

- ① Permitted cable tray/ladder load in kN/m without man load
- ② Support width in m
- ③ Rail bend in mm at permitted kN/m
- Load curve with cable tray/ladder width in mm
- Strut bend curve according to support width
- ④ Load scheme during testing

Connector

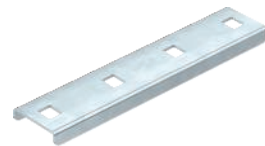


Type	Pack. pcs	Weight kg/100 pcs.	Item No.
SLV 62 FT	10	20.900	7103548

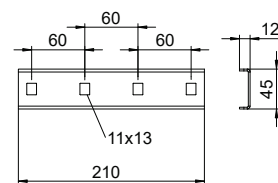
St Steel

FT Hot-dip galvanised

/pc.



Straight connector as external connector to connect cable ladders and fittings with a side height of 40 mm.



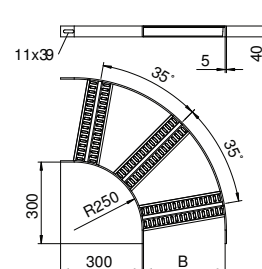
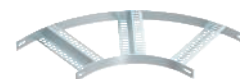
90° bend

Type	Width mm	Rail thickness mm	Pack. pcs	Weight kg/100 pcs.	Item No.
SLZB 90 100 FT	100	5	1	228.900	7099000
SLZB 90 150 FT	150	5	1	266.100	7099001
SLZB 90 200 FT	200	5	1	306.000	7099002
SLZB 90 300 FT	300	5	1	382.000	7099004
SLZB 90 400 FT	400	5	1	458.000	7099006
SLZB 90 500 FT	500	5	1	533.000	7099008
SLZB 90 600 FT	600	5	1	609.000	7099010
SLZB 90 700 FT	700	5	1	806.000	7099012
SLZB 90 800 FT	800	5	1	900.000	7099014
SLZB 90 900 FT	900	5	1	994.000	7099016
SLZB 90 1000 FT	1000	5	1	1,088.000	7099018
SLZB 90 1200 FT	1200	5	1	1,276.000	7099020

St Steel

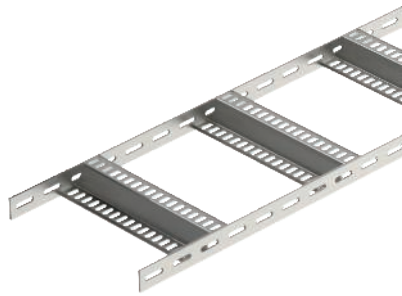
FT Hot-dip galvanised

/pc.



Connectors should be ordered separately and in the appropriate quantity.

Cable ladder with Z rung, standard



Type	Width mm	Rail thickness mm	Pack. m	Weight kg/100 m	Item No.
SLZ 100 A2	100	5	3	319.000	7098192
SLZ 200 A2	200	5	3	372.400	7098194
SLZ 300 A2	300	5	3	425.670	7098196
SLZ 400 A2	400	5	3	479.000	7098198
SLZ 500 A2	500	5	3	532.340	7098200
SLZ 600 A2	600	5	3	585.670	7098202
SLZ 700 A2	700	5	3	639.000	7098204
SLZ 800 A2	800	5	3	692.340	7098206
SLZ 900 A2	900	5	3	745.670	7098208
SLZ 1000 A2	1000	5	3	799.000	7098210
SLZ 1200 A2	1200	5	3	905.340	7098212

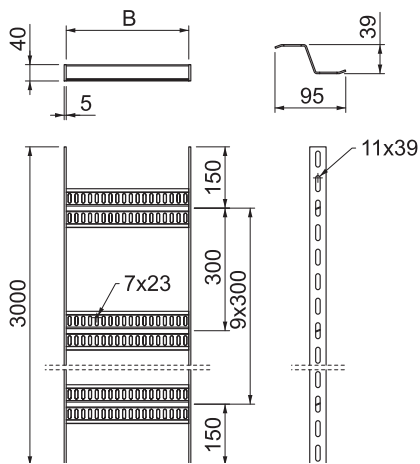
V2A Stainless steel, A2

/m

GB Stained

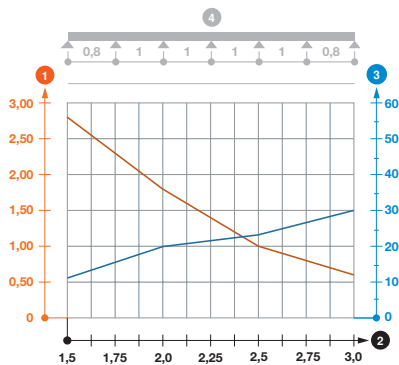
Shipbuilding cable ladder with perforated side rail of side height 40 mm with welded, perforated Z rungs. Load tested according to IEC in conjunction with connector, type SLV.

Dimensions



Type	Length mm	Dimension B mm	Side height mm	Rail thickness mm
SLZ 100 A2	3000	110	40	5
SLZ 200 A2	3000	210	40	5
SLZ 300 A2	3000	310	40	5
SLZ 400 A2	3000	410	40	5
SLZ 500 A2	3000	510	40	5
SLZ 600 A2	3000	610	40	5
SLZ 700 A2	3000	710	40	5
SLZ 800 A2	3000	810	40	5
SLZ 900 A2	3000	910	40	5
SLZ 1000 A2	3000	1010	40	5
SLZ 1200 A2	3000	1210	40	5

Load



Type	1.5 m kN/m	2.0 m kN/m	2.5 m kN/m	3.0 m kN/m
SLZ 100 A2	2.8	1.75	1	0.6
SLZ 200 A2	2.8	1.75	1	0.6
SLZ 300 A2	2.8	1.75	1	0.6
SLZ 400 A2	2.8	1.75	1	0.6
SLZ 500 A2	2.8	1.75	1	0.6
SLZ 600 A2	2.8	1.75	1	0.6
SLZ 700 A2	2.8	1.75	1	0.6
SLZ 800 A2	2.8	1.75	1	0.6
SLZ 900 A2	2.8	1.75	1	0.6
SLZ 1000 A2	2.8	1.75	1	0.6
SLZ 1200 A2	2.8	1.75	1	0.6

Load diagram, cable ladder SLZ

- ① Permitted cable tray/ladder load in kN/m without man load
- ② Support width in m
- ③ Rail bend in mm at permitted kN/m
- Load curve with cable tray/ladder width in mm
- Strut bend curve according to support width
- ④ Load scheme during testing

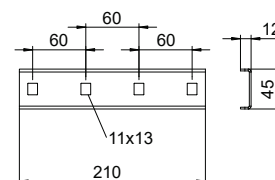
Connector

Type	Pack. pcs	Weight		Item No.
		kg/100 pcs.		
SLV 62 A4	10	14.600		7103568

V4A Stainless steel, A4

/pc.

Straight connector as external connector to connect cable ladders and fittings with a side height of 40 mm.



90° bend

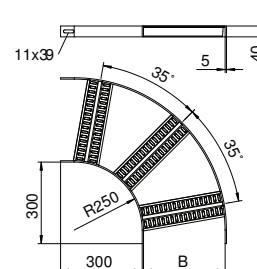
Type	Width mm	Rail thickness mm	Pack. pcs	Weight		Item No.
				kg/100 pcs.		
SLZB 90 100 A2	100	5	1	225.100		7099030
SLZB 90 200 A2	200	5	1	298.300		7099032
SLZB 90 300 A2	300	5	1	371.500		7099034
SLZB 90 400 A2	400	5	1	444.600		7099036
SLZB 90 500 A2	500	5	1	517.700		7099038
SLZB 90 600 A2	600	5	1	590.900		7099040
SLZB 90 700 A2	700	5	1	776.800		7099042
SLZB 90 800 A2	800	5	1	866.000		7099044
SLZB 90 900 A2	900	5	1	955.200		7099046
SLZB 90 1000 A2	1000	5	1	1,044.400		7099048
SLZB 90 1200 A2	1200	5	1	1,222.800		7099050

V2A Stainless steel, A2

GB Stained

/pc.

Connectors should be ordered separately and in the appropriate quantity.



Cable ladder with Z rung, standard



Type	Width mm	Rail thickness mm	Pack. m	Weight kg/100 m	Item No.
SLZ 100 A4	100	5	3	319.000	7098222
SLZ 200 A4	200	5	3	372.340	7098224
SLZ 300 A4	300	5	3	427.670	7098226
SLZ 400 A4	400	5	3	479.000	7098228
SLZ 500 A4	500	5	3	532.340	7098230
SLZ 600 A4	600	5	3	585.670	7098232
SLZ 700 A4	700	5	3	639.000	7098234
SLZ 800 A4	800	5	3	692.340	7098236
SLZ 900 A4	900	5	3	745.670	7098238
SLZ 1000 A4	1000	5	3	799.000	7098240
SLZ 1200 A4	1200	5	3	905.340	7098242

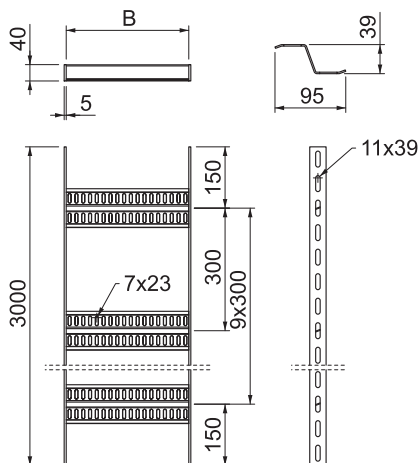
V4A Stainless steel, A4

/m

GB Stained

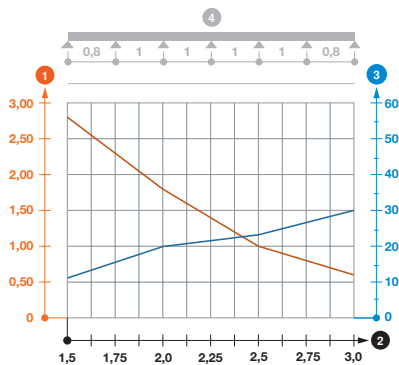
Shipbuilding cable ladder with perforated side rail of side height 40 mm with welded, perforated Z rungs. Load tested according to IEC in conjunction with connector, type SLV.

Dimensions



Type	Length mm	Dimension B mm	Side height mm	Rail thickness mm
SLZ 100 A4	3000	110	40	5
SLZ 200 A4	3000	210	40	5
SLZ 300 A4	3000	310	40	5
SLZ 400 A4	3000	410	40	5
SLZ 500 A4	3000	510	40	5
SLZ 600 A4	3000	610	40	5
SLZ 700 A4	3000	710	40	5
SLZ 800 A4	3000	810	40	5
SLZ 900 A4	3000	910	40	5
SLZ 1000 A4	3000	1010	40	5
SLZ 1200 A4	3000	1210	40	5

Load



Type	1.5 m kN/m	2.0 m kN/m	2.5 m kN/m	3.0 m kN/m
SLZ 100 A4	2.8	1.75	1	0.6
SLZ 200 A4	2.8	1.75	1	0.6
SLZ 300 A4	2.8	1.75	1	0.6
SLZ 400 A4	2.8	1.75	1	0.6
SLZ 500 A4	2.8	1.75	1	0.6
SLZ 600 A4	2.8	1.75	1	0.6
SLZ 700 A4	2.8	1.75	1	0.6
SLZ 800 A4	2.8	1.75	1	0.6
SLZ 900 A4	2.8	1.75	1	0.6
SLZ 1000 A4	2.8	1.75	1	0.6
SLZ 1200 A4	2.8	1.75	1	0.6

Load diagram, cable ladder SLZ

- 1 Permitted cable tray/ladder load in kN/m without man load
- 2 Support width in m
- 3 Rail bend in mm at permitted kN/m
- Load curve with cable tray/ladder width in mm
- Strut bend curve according to support width
- 4 Load scheme during testing

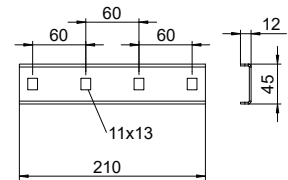
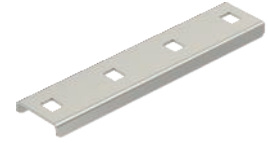
Connector

Type	Pack. pcs	Weight		Item No.
		kg/100 pcs.		
SLV 62 A4	10	14.600		7103568

V4A Stainless steel, A4

/pc.

Straight connector as external connector to connect cable ladders and fittings with a side height of 40 mm.



90° bend

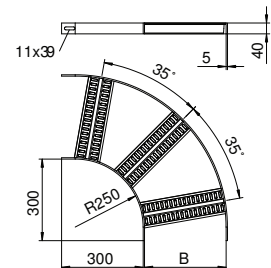
Type	Width mm	Rail thickness mm	Pack. pcs	Weight		Item No.
				kg/100 pcs.		
SLZB 90 100 A4	100	5	1	227.900		7099060
SLZB 90 200 A4	200	5	1	302.100		7099062
SLZB 90 300 A4	300	5	1	376.200		7099064
SLZB 90 400 A4	400	5	1	450.200		7099066
SLZB 90 500 A4	500	5	1	524.300		7099068
SLZB 90 600 A4	600	5	1	598.300		7099070
SLZB 90 700 A4	700	5	1	786.600		7099072
SLZB 90 800 A4	800	5	1	877.000		7099074
SLZB 90 900 A4	900	5	1	967.300		7099076
SLZB 90 1000 A4	1000	5	1	1,057.600		7099078
SLZB 90 1200 A4	1200	5	1	1,238.300		7099080

V4A Stainless steel, A4

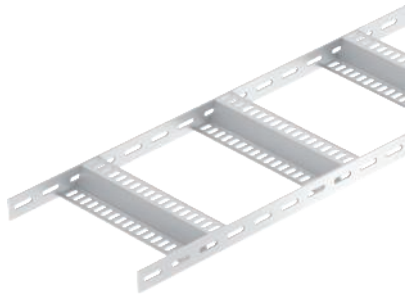
/pc.

GB Stained

Connectors should be ordered separately and in the appropriate quantity.



Cable ladder with Z rung, standard



Type	Width mm	Rail thickness mm	Pack. m	Weight kg/100 m	Item No.
SLZ 100 ALU	100	5	3	106.600	7099772
SLZ 200 ALU	200	5	3	124.670	7099774
SLZ 300 ALU	300	5	3	142.740	7099776
SLZ 400 ALU	400	5	3	160.770	7099778
SLZ 500 ALU	500	5	3	178.840	7099780
SLZ 600 ALU	600	5	3	196.900	7099782
SLZ 700 ALU	700	5	3	214.970	7099784
SLZ 800 ALU	800	5	3	233.033	7099786
SLZ 900 ALU	900	5	3	251.100	7099788
SLZ 1000 ALU	1000	5	3	269.170	7099790
SLZ 1200 ALU	1200	5	3	305.270	7099792

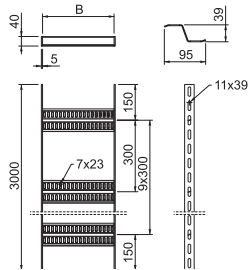
Alu Aluminium

/m

GB Stained

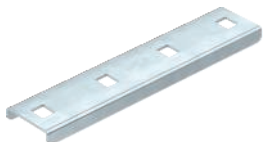
Shipbuilding cable ladder with perforated side rail of side height 40 mm with welded, perforated Z rungs.

Dimensions



Type	Length mm	Dimension B mm	Side height mm	Rail thickness mm
SLZ 100 ALU	3000	110	40	5
SLZ 200 ALU	3000	210	40	5
SLZ 300 ALU	3000	310	40	5
SLZ 400 ALU	3000	410	40	5
SLZ 500 ALU	3000	510	40	5
SLZ 600 ALU	3000	610	40	5
SLZ 700 ALU	3000	710	40	5
SLZ 800 ALU	3000	810	40	5
SLZ 900 ALU	3000	910	40	5
SLZ 1000 ALU	3000	1010	40	5
SLZ 1200 ALU	3000	1210	40	5

Connector

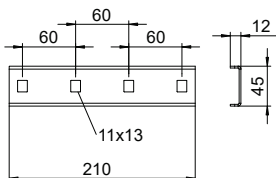


Type	Pack. pcs	Weight kg/100 pcs.	Item No.
SLV 62 ALU	10	12.500	7103554

Alu Aluminium

/pc.

Straight connector as external connector to connect cable ladders and fittings with a side height of 40 mm.



90° bend

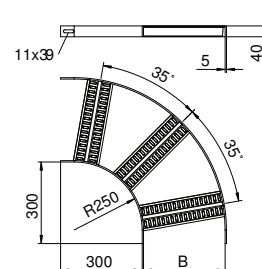
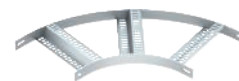
Type	Width mm	Rail thickness mm	Pack. pcs	Weight kg/100 pcs.	Item No.
SLZB 90 100 ALU	100	5	1	75.800	7099090
SLZB 90 200 ALU	200	5	1	100.400	7099092
SLZB 90 300 ALU	300	5	1	125.100	7099094
SLZB 90 400 ALU	400	5	1	149.700	7099096
SLZB 90 500 ALU	500	5	1	174.300	7099098
SLZB 90 600 ALU	600	5	1	198.900	7099100
SLZB 90 700 ALU	700	5	1	261.600	7099102
SLZB 90 800 ALU	800	5	1	291.600	7099104
SLZB 90 900 ALU	900	5	1	321.600	7099106
SLZB 90 1000 ALU	1000	5	1	351.700	7099108
SLZB 90 1200 ALU	1200	5	1	411.700	7099110

Alu Aluminium

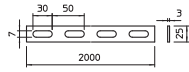
GB Stained

/pc.

Connectors should be ordered separately and in the appropriate quantity.



Construction and suspension profile



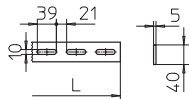
Type	Dimension mm	Length mm	Pack. m	Weight kg/100 m	Item No.
SLH 42 2000 SG	25x3	2000	2	50.000	7103603
SLH 42 2000 FT	25x3	2000	2	51.500	7103611
SLH 42 2000 A2	25 x 3	2000	2	50.000	7103620
SLH 42 2000 A4	25 x 3	2000	2	50.000	7103626

Sl Steel V2A Stainless steel, A2 V4A Stainless steel, A4 /m
SG Pre-treated for welding FT Hot-dip galvanised

Perforated side rail profile of shipbuilding ladders, SL 42, for the creation of suspension and support constructions.

The profile is available in bright steel on request.

Construction and suspension profile



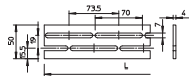
Type	Dimension mm	Length mm	Pack. m	Weight kg/100 m	Item No.
SLH 62 3000 SG	40 x 5	3000	3	133.000	7103635
SLH 62 3000 FT	40 x 5	3000	3	135.700	7103643
SLH 62 3000 A2	40x5	3000	3	133.000	7103650
SLH 62 3000 A4	40x5	3000	3	133.000	7103656

Sl Steel V2A Stainless steel, A2 V4A Stainless steel, A4 /m
SG Pre-treated for welding FT Hot-dip galvanised

Perforated side rail profile of shipbuilding ladders, SL 62, for the creation of suspension and support constructions.

The profile is available in bright steel on request.

Construction and suspension profile

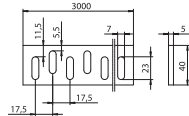


Type	Dimension mm	Length mm	Pack. m	Weight kg/100 m	Item No.
FESP L 50 4 BK	50 x 4	3000	3	116.000	7104960
FESP L 50 4 FT	50 x 4	3000	3	118.900	7105002

Sl Steel /m
BK Bright FT Hot-dip galvanised

Flat iron profile with double, offset longitudinal hole row for creation of suspension and support constructions.

Construction and suspension profile

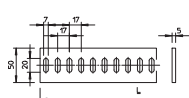


Type	Dimension mm	Length mm	Pack. m	Weight kg/100 m	Item No.
FESP Q 40 5 SG	40 x 5	3000	3	123.300	7104358
FESP Q 40 5 FT	40 x 5	3000	3	130.000	7104356

Sl Steel /m
SG Pre-treated for welding FT Hot-dip galvanised

Flat iron profile with double, side-offset slot row to create suspension and support constructions.

Construction and suspension profile



Type	Length mm	Plate thickness mm	Pack. m	Weight kg/100 m	Item No.
FESP Q 50 5 BK	3000	5.00	3	166.367	7104367

Sl Steel /m
BK Bright

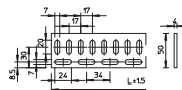
Flat iron profile with slots to create suspensions and support constructions.

Construction and suspension profile

Type	Plate		Pack.	Weight		Item No.
	Length	thickness		m	kg/100 m	
FESP QL 50 4 BK	3000	4.00	3	118.567		7104669

- St** Steel
- BK** Bright

/m



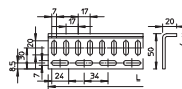
Flat iron profile with transverse and lengthwise slots to create suspended and support constructions.

Angle profile

Type	Plate		Pack.	Weight		Item No.
	Length	thickness		m	kg/100 m	
WESP 50 20 BK	3000	4.00	3	159.000		7105665

- St** Steel
- BK** Bright

/m



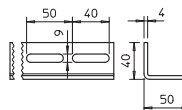
Angle profile with transverse and longitudinal perforation to create suspension and support constructions.

Angle profile

Type	Plate		Pack.	Weight		Item No.
	Length	thickness		m	kg/100 m	
WESP 50 40 SG	3000	4.00	3	239.340		7105675
WESP 50 40 FT	3000	4.00	3	246.340		7105673

- St** Steel
- SG** Pre-treated for welding **FT** Hot-dip galvanised

/m



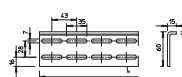
Angle profile with longitudinal perforation row to create suspension and support constructions.

Angle profile

Type	Plate		Pack.	Weight		Item No.
	Length	thickness		m	kg/100 m	
WESP 60 15 BK	3000	4.00	3	179.000		7105967

- St** Steel
- BK** Bright

/m



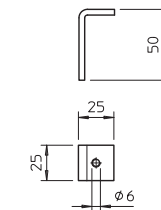
Angle profile with longitudinal perforation to create suspension and support constructions.

Welding angle

Type	Dimension	Pack.	Weight		Item No.
			pcs	kg/100 pcs.	
ASW FT	25x50	10	5.700		6015350

- St** Steel
- FT** Hot-dip galvanised

/pc.



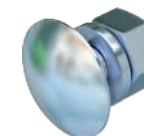
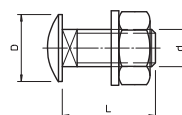
Welding angle for mounting shipbuilding cable ladders and marine trays, for welding to steel structures.

Truss-head bolt with nut and washer

Type	Dimension	Dimen- sion L	Dimen- sion D	Resistance class	Pack. pcs	Weight		Item No.
						mm	kg/100 pcs.	
FRS 8x25 F	M 8 x 25	25	20	8.8	50	2.300		6406998
FRS 10x30 F	M 10 x 30	30	24	8.8	50	5.000		6407579
FRS 8x25 A2	M 8 x 25	25	20	A2-70	50	2.300		6406815
FRS 10x30 A2	M10 x 30	30	24	A2-70	50	4.500		6406726

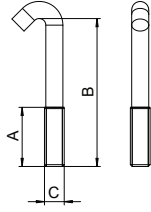
- St** Steel **V2A** Stainless steel, A2
- F** Hot-dip galvanised

/100 pc.



Truss-head bolt with square neck. With washer and hexagonal nut.

Hook screw



Type	Thread	Pack. pcs	Weight kg/100 pcs.	Item No.
HS M6x45 A4	M6	25	0.970	1154970
HS M8x60 A4	M8	25	2.330	1154975

V4A Stainless steel, A4 /100 pc.

Hook screw for fastening cable tracks on the bracket.



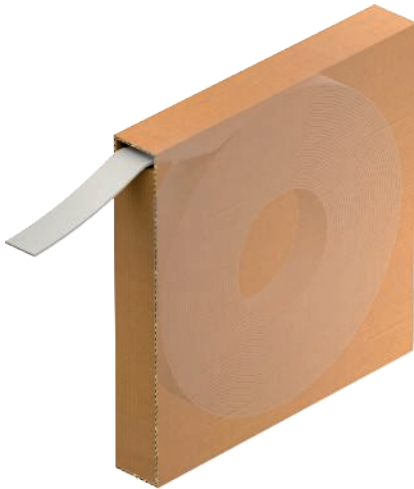
System accessories

Tightening strap



Tightening strap

The tightening strap is perfectly suited as a system accessory for the fastening of cables to OBO cable support systems. The strap, which is made of galvanised steel or stainless steel with plastic jacketing, is extremely robust and friction-resistant. It is tested for tensile strength (kN) according to the material (strength) and is available in various colours.



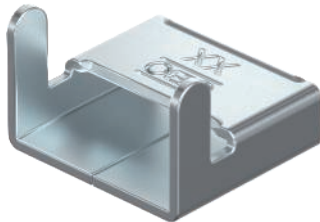
Tightening strap on a roll SBR 8/SBR 15

Widths: 8 mm and 15 mm

Materials: Steel and stainless steel (A2 and A4)

Colours: Stone grey, jet black and chestnut brown

- ✓ Made of galvanised steel or stainless steel with plastic jacketing
- ✓ On a roll in a box: 25 m or 50 m
- ✓ Can be self-terminated



Tightening strap lock SBV 8/SBV 15

Widths: 8 mm and 15 mm

Materials: Steel and stainless steel (A2 and A4)

- ✓ Made of galvanised steel or stainless steel with plastic jacketing
- ✓ For lacing self-terminated tightening straps
- ✓ Quick, easy and safe installation



Tightening strap in fixed length SBF 8/SBF 15

Widths: 8 mm and 15 mm

Materials: Steel and stainless steel (A2 and A4)

Colours: Stone grey, jet black and chestnut brown

- ✓ Made of galvanised steel or stainless steel with plastic jacketing
- ✓ For lacing self-terminated tightening straps
- ✓ Pre-terminated, with tightening strap lock

Materials



Tightening strap on a roll

FSK

A2K

A4K

Width in mm	FSK Strip galvanised, plastic-coated	A2K Stainless steel, plastic-coated	A4K Stainless steel, plastic-coated
8		✓	✓
15	✓	✓	✓

Tightening strap lock

FSK

A2K

A4K

Width in mm	FS Strip galvanised, plastic-coated	A2 Stainless steel, plastic-coated	A4 Stainless steel, plastic-coated
8	✓	✓	✓
15	✓	✓	✓

Tightening strap in fixed length

FSK

A2K

A4K

Width in mm	Length in mm	FSK Strip galvanised, plastic-coated	A2K Stainless steel, plastic-coated	A4K Stainless steel, plastic-coated
8	200	✓	✓	✓
8	300	✓	✓	✓
8	400	✓	✓	✓
8	500	✓	✓	✓
8	600	✓	✓	✓
15	200	✓	✓	✓
15	300	✓	✓	✓
15	400	✓	✓	✓
15	500	✓	✓	✓
15	600	✓	✓	✓
15	700	✓	✓	✓
15	800	✓	✓	✓
15	900	✓	✓	✓
15	1000	✓	✓	✓

Tightening strap

Tightening strap



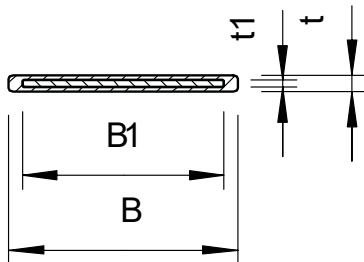
Type	Ø breaking load		Colour	Pack. Weight		Item No.
	kN			m	kg/100 m	
SBR 8 A2K	1.16		Jet black	50	2.840	6490192
SBR 8 A4K	1.09		Chestnut brown	50	2.840	6490194

V2A Stainless steel, A2 V4A Stainless steel, A4

K Plastic-coated

Tightening strap made of rustproof steel with plastic jacketing to fasten cables on cable support systems.

Dimensions



Type	Dimension B mm	Dimension t mm	Dimension B1 mm	Dimension t1 mm
SBR 8 A2K	9.3	1	8	0.3

Tightening strap lock



Type	Pack. pcs	Weight kg/100 pcs	Item No.
SBV 8 FS	100	0.250	6490940
SBV 8 A2	100	0.250	6490942
SBV 8 A4	100	0.250	6490944

St Steel V2A Stainless steel, A2 V4A Stainless steel, A4

FS Strip-galvanised

/100 pc.

Tightening strap lock made of strip-galvanised steel, suitable for portfolio with 8 mm width.

Tightening strap



Type	Ø breaking load		Colour	Pack. Weight		Item No.
	kN			m	kg/100 m	
SBR 15 FSK	2.5		Stone grey	25	7.628	6490280
SBR 15 A2K	4.19		Jet black	25	7.628	6490282
SBR 15 A4K	3.93		Chestnut brown	25	7.628	6490284

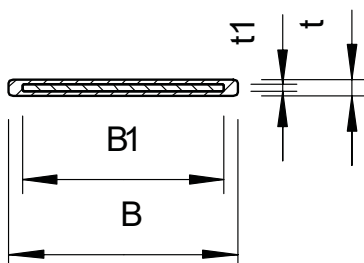
St Steel V2A Stainless steel, A2 V4A Stainless steel, A4

FSK Strip galvanised/plastic-coated K Plastic-coated

price/100 m

Tightening strap made of strip-galvanised steel with plastic jacketing to fasten cables on cable support systems.

Dimensions



Type	Dimension B mm	Dimension t mm	Dimension B1 mm	Dimension t1 mm
SBR 15 FSK	17	1.2	15	0.5

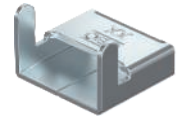
Tightening strap lock

Type	Pack. pcs	Weight kg/100 pcs.	Item No.
SBV 15 FS	100	0.560	6490950
SBV 15 A2	100	0.560	6490964
SBV 15 A4	100	0.560	6490972

St Steel **V2A** Stainless steel, A2 **V4A** Stainless steel, A4 /100 pc.

FS Strip-galvanised

Tightening strap lock made of strip-galvanised steel, suitable for a range of products with a 15 mm width.



Tightening strap with lock

Type	Length mm	Ø breaking load kN	Colour	Pack. pcs	Weight kg/100 pcs.	Item No.
SBF 8-200 A2K	200	1.16	Jet black	25	0.700	6490210
SBF 8-300 A2K	300	1.16	Jet black	25	1.000	6490214
SBF 8-400 A2K	400	1.16	Jet black	25	1.300	6490218
SBF 8-500 A2K	500	1.16	Jet black	25	1.600	6490222
SBF 8-600 A2K	600	1.16	Jet black	25	1.800	6490226
SBF 8-200 A4K	200	1.09	Chestnut brown	25	0.700	6490240
SBF 8-300 A4K	300	1.09	Chestnut brown	25	1.000	6490244
SBF 8-400 A4K	400	1.09	Chestnut brown	25	1.300	6490248
SBF 8-500 A4K	500	1.09	Chestnut brown	25	1.600	6490252
SBF 8-600 A4K	600	1.09	Chestnut brown	25	1.800	6490256

V2A Stainless steel, A2 **V4A** Stainless steel, A4 /100 pc.

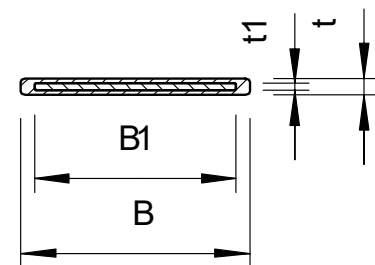
K Plastic-coated

Pre-terminated tightening strap made of rustproof steel with plastic jacketing and tightening strap lock.

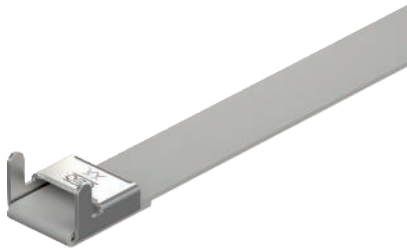


Type	Dimension B mm	Dimension t mm	Dimension B1 mm	Dimension t1 mm
SBF 8-200 A2K	9.3	1	8	0.3
SBF 8-300 A2K	9.3	1	8	0.3
SBF 8-400 A2K	9.3	1	8	0.3
SBF 8-500 A2K	9.3	1	8	0.3
SBF 8-600 A2K	9.3	1	8	0.3

Dimensions



Tightening strap with lock

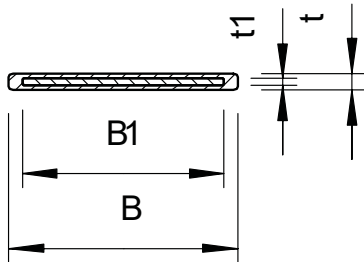


Type	Length mm	Ø breaking load kN	Colour	Pack. pcs	Weight kg/100 pcs.	Item No.
SBF 15-300 FSK	300	2.5	Stone grey	25	2.600	6490300
SBF 15-400 FSK	400	2.5	Stone grey	25	3.300	6490304
SBF 15-500 FSK	500	2.5	Stone grey	25	4.100	6490308
SBF 15-600 FSK	600	2.5	Stone grey	25	4.800	6490312
SBF 15-700 FSK	700	2.5	Stone grey	25	5.500	6490316
SBF 15-800 FSK	800	2.5	Stone grey	25	6.200	6490320
SBF 15-900 FSK	900	2.5	Stone grey	25	6.900	6490324
SBF 15-1000 FSK	1000	2.5	Stone grey	25	7.600	6490328
SBF 15-300 A2K	300	4.19	Jet black	25	2.600	6490340
SBF 15-500 A2K	500	4.19	Jet black	25	4.100	6490348
SBF 15-600 A2K	600	4.19	Jet black	25	4.800	6490352
SBF 15-700 A2K	700	4.19	Jet black	25	5.500	6490356
SBF 15-800 A2K	800	4.19	Jet black	25	6.200	6490360
SBF 15-900 A2K	900	4.19	Jet black	25	6.900	6490364
SBF 15-1000 A2K	1000	4.19	Jet black	25	7.600	6490368
SBF 15-300 A4K	300	3.93	Chestnut brown	25	2.600	6490380
SBF 15-400 A4K	400	3.93	Chestnut brown	25	3.300	6490384
SBF 15-500 A4K	500	3.93	Chestnut brown	25	4.100	6490388
SBF 15-600 A4K	600	3.93	Chestnut brown	25	4.800	6490392
SBF 15-700 A4K	700	3.93	Chestnut brown	25	5.500	6490396
SBF 15-800 A4K	800	3.93	Chestnut brown	25	6.200	6490400
SBF 15-900 A4K	900	3.93	Chestnut brown	25	6.900	6490404
SBF 15-1000 A4K	1000	3.93	Chestnut brown	25	7.600	6490408

St Steel V2A Stainless steel, A2 V4A Stainless steel, A4 /100 pc.
 FSK Strip galvanised/plastic-coated K Plastic-coated

Pre-terminated tightening strap made of strip-galvanised steel with plastic jacketing and tightening strap lock.

Dimensions



Type	Dimension B mm	Dimen- sion t mm	Dimen- sion B1 mm	Dimen- sion t1 mm
SBF 15-300 FSK	17	1.2	15	0.5
SBF 15-400 FSK	17	1.2	15	0.5
SBF 15-500 FSK	17	1.2	15	0.5
SBF 15-600 FSK	17	1.2	15	0.5
SBF 15-700 FSK	17	1.2	15	0.5
SBF 15-800 FSK	17	1.2	15	0.5
SBF 15-900 FSK	17	1.2	15	0.5
SBF 15-1000 FSK	17	1.2	15	0.5

Spring chuck

Type	Pack.		Weight	Item No.
	pcs	kg/100 pcs.		
575	1	29.700		6498019

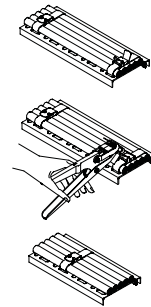
St Steel

/pc.

Clamping tool for all OBO tightening straps in conjunction with appropriate tightening strap locks. Simple spring chuck without ratchet function and shortening unit. With ergonomically shaped grips.



Dimensions



Spring chuck

Type	Pack.		Weight	Item No.
	pcs	kg/100 pcs.		
576	1	132.000		6498027

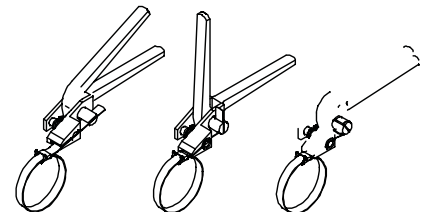
St Steel

/pc.

Clamping tool for all OBO tightening straps in conjunction with appropriate tightening strap locks. With high clamping force, ratchet function, shortening unit and round grips for pleasant handling.



Dimensions



Certified? Certainly!

The shipbuilding cable ladder systems, together with their accessories, are certified according to the classification rules of the DNV GL - Maritime standards. The OBO systems can be installed, without restriction, for use in all ship and offshore units according to the DNV GL classification. A test according to the regulations for safety, reliability and environmental protection requirements for operation in international waters is thus no problem.

DNV·GL



Welding operation for the shipbuilding cable ladder



Produced with state-of-the-art technology

OBO cable ladder systems for shipbuilding are created in a fully automated production process, in which the latest robot technology is used. The high-quality technical equipment guarantees an end product with a wide range of materials, as the welding robot can process not just steel, but also stainless steel and aluminium.

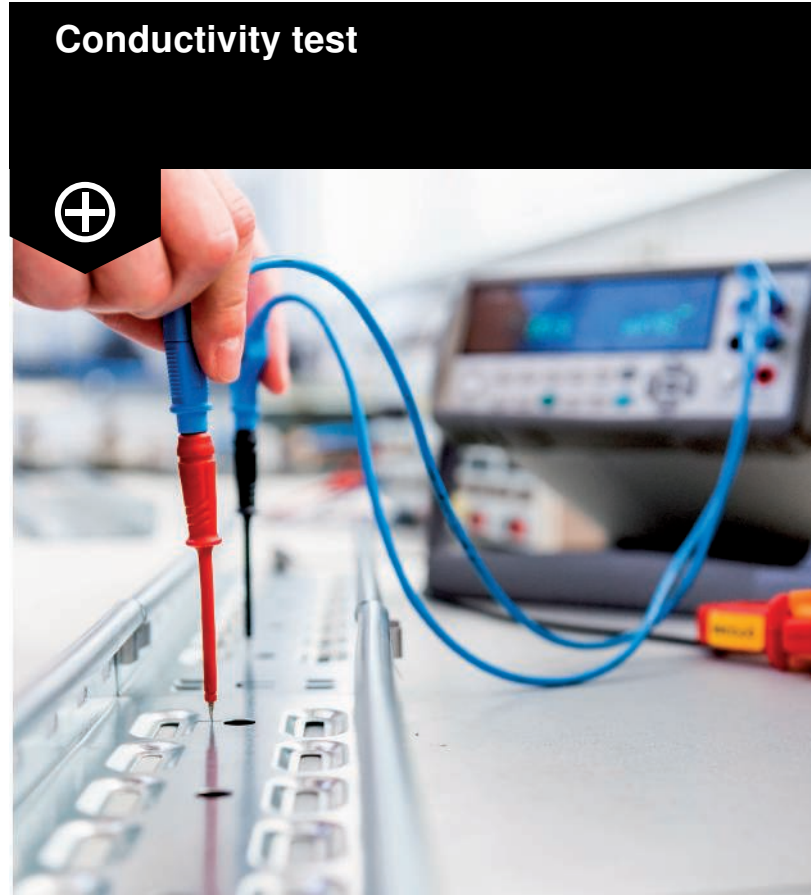
Our shipbuilding cable ladders are also welded precisely by specialist personnel: The continuous throat seam ensures the highest level of stability, which we regularly check and have certified through our BET Testing Centre. This highly corrosive welding connection means that OBO shipbuilding cable ladders are ready for the toughest offshore requirements.

BET Test Centre

Quality assurance



The special testing systems in the BET Test Centre allow comprehensive product tests and guarantee the OBO Bettermann quality. Thanks to continuous further developments and adaptations to the latest requirements, the prescribed DIN tests can be carried out and documented.



Conductivity test

IK
09

IK classification

The IK classification to EN 50102 grades the mechanical stability of electrical installation duct systems. K09 ensures the requirements for the highest impact resistance are fulfilled.

IP
67

IP protection rating

The IP protection rating describes the protection provided by the housing, such as touch and moisture protection, and the protection of the installation against foreign bodies. This test is carried out according to EN 60529.

SWL

Safe working load

The safe working load (SWL) and therefore the reliable load-bearing capacity of the systems are tested according to DIN EN 61537.

Conductivity test

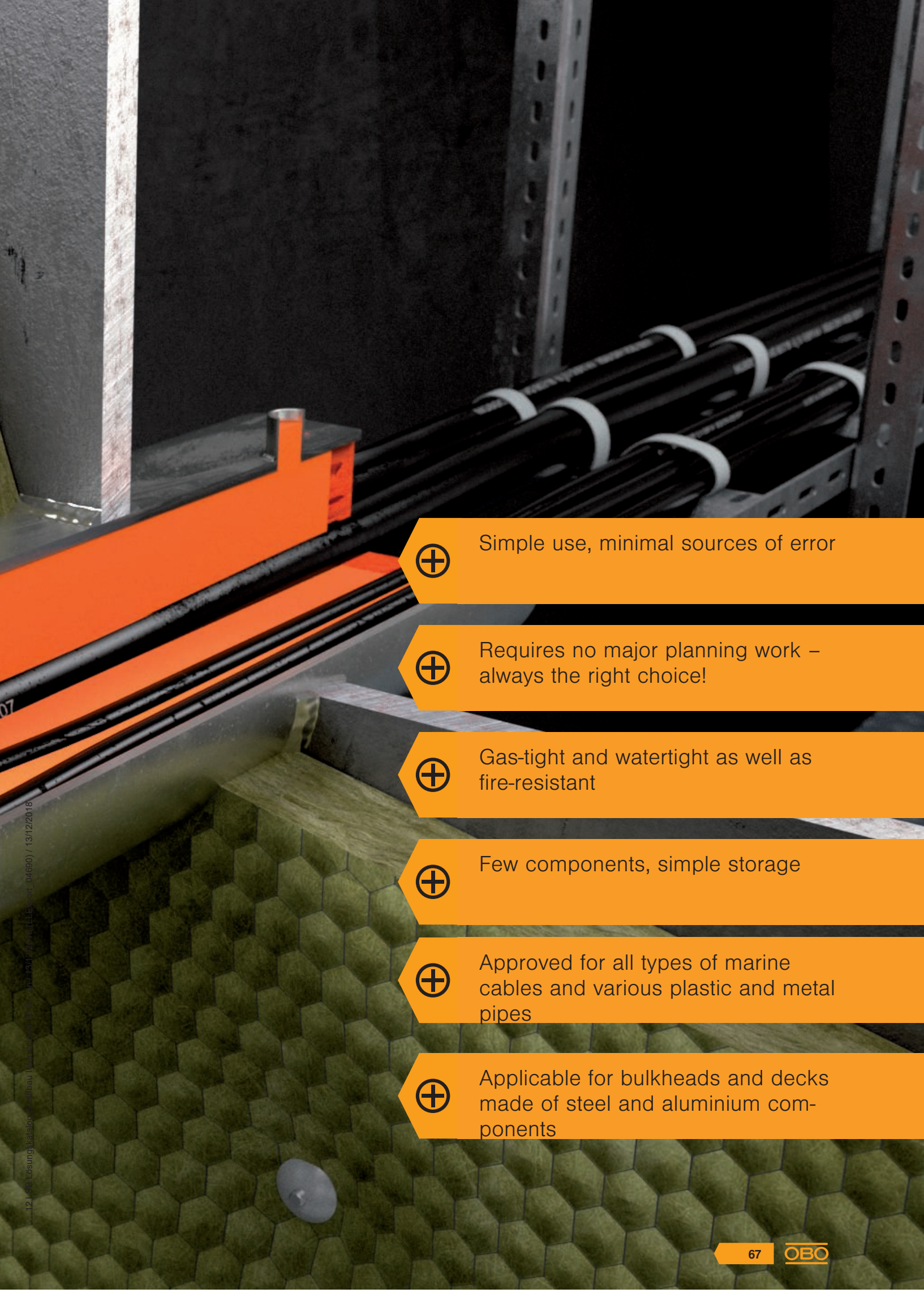
Electrically conductive cable support systems are tested according to DIN EN 61537 and electrically conductive electrical installation duct systems are tested according to DIN EN 50085. The conductivity is tested at connection points with an AC current of 25 A. The impedance (measured voltage/AC) may not exceed 5 mΩ/m along the length of a cable support. The impedance may not exceed 50 mΩ across a connection.

PYROLIQ® casting compound

In industry, shipbuilding and offshore areas, very high requirements are placed on cable and pipe penetrations through decks and bulkheads. Besides the requirements for water- and, to some extent, gas-tightness, the fire resistance of the components must also be taken into account in the safety concepts of the systems.

The PYROLIQ® casting compound system is used here: Frames for the cable penetrations are created using existing materials and, after the installation of cables and pipes, are cast using the components of the PYROLIQ® system with just a few actions. The bulkheads are waterproof up to a pressure of 2.5 bar and gas-tight up to 200 mbar.





Simple use, minimal sources of error



Requires no major planning work – always the right choice!



Gas-tight and watertight as well as fire-resistant



Few components, simple storage



Approved for all types of marine cables and various plastic and metal pipes



Applicable for bulkheads and decks made of steel and aluminium components

12 | Das Lösungs-Katalog-System | 04/2018 | 13/12/2018

Sealing compound



Type	Contents kg	Pack.	Weight	Item No.
		pcs	kg/100 pcs.	
VMS-TE 1	2.5	1	250.000	7203840
VMS-TE 2	12.5	1	1,250.000	7203843

Special mortar /pc.

Dry compound in plastic container to mix with tap water. Makes a gas-tight and watertight seal of fire resistance class A60 to IMO resolution A.754(18). Including measuring cup.

The mixing ratio of water to powder is 1:2. The mixed compound is pumpable for approx. 45 minutes. The mixture is chemically hardened after 72 hours.

Stored in a dry and frost-free environment, the dry compound will keep for 3 years.

Expanding module, small



Type	Dimension mm	Pack.	Weight	Item No.
		pcs	kg/100 pcs.	
VMS-QMK 1	120 x 25 x 6	20	0.600	7203846

Foam /pc.

Expanding foam modules to replace a casing in the sealing compound system if part of the casing has been lost. The modules expand by a factor of 10 when sprinkled with the impregnating fluid, closing gaps and joints between the cables installed.

After the cables have been impregnated they are hardly flammable, fire-retardant and self-extinguishing.

Stored in a dry environment, the expanding modules have an unlimited lifespan.

Expanding module, large



Type	Dimension mm	Pack.	Weight	Item No.
		pcs	kg/100 pcs.	
VMS-QMG 1	800 x 25 x 6	15	5.200	7203849

Foam /pc.

Expanding foam modules to replace a casing in the sealing compound system if part of the casing has been lost. The modules expand by a factor of 10 when sprinkled with the impregnating fluid, closing gaps and joints between the cables installed.

After the cables have been impregnated they are hardly flammable, fire-retardant and self-extinguishing.

Stored in a dry environment, the expanding modules have an unlimited lifespan.

Impregnation fluid



Type	Contents ml	Pack.	Weight	Item No.
		pcs	kg/100 pcs.	
VMS-IF 1	1000	1	104.500	7203852

/pc.

Fluid to sprinkle the expanding module.

When 5 long expanding modules are used, approx. 1 l of impregnation fluid is required.

Stored in a frost-free environment it has a lifespan of 2 years.

Sealing compound for external use



Type	Contents kg	Pack.	Weight	Item No.
		pcs	kg/100 pcs.	
VMS-VA 1	1	1	100.000	7203858

Special mortar /pc.

Flame-retardant sealing compound for insulations in sealing compound systems. Watertight and resistant against common technical oils as well as weak/diluted acids. Halogen-free and cold-hardening.

2 components (hardener and resin) in tin with lid to push through. Lifespan of 12 months in original and closed packaging at temperature between +10 and +40 °C.

Sealing compound, water-repellent

Type	Contents kg	Pack. pcs	Weight		Item No.
			kg/100	pcs.	
VMS-VW 1	1	1	100.000		7203864

Special mortar /pc.

Flame-retardant sealing compound for insulations in sealing compound systems for application in water-filled openings.

Watertight and resistant against common technical oils as well as weak/diluted acids. Halogen-free and cold-hardening.

2 components (hardener and resin) in tin with lid to push through. Lifespan of 6 months in original and closed packaging at temperature between +10 and +40 °C.



Sealing compound, conductive

Type	Contents kg	Pack. pcs	Weight		Item No.
			kg/100	pcs.	
VMS-VL 1	1	1	100.000		7203867

Special mortar /pc.

Electrically conductive sealing compound for insulations in sealing compound systems and for the integration of the woven cable shield in EMV-compliant installations. 2 components (hardener and resin) in tin with lid to push through. Lifespan of 6 months when stored in frost-free storage.



Pipe insulating strip

Type	Dimension mm	Pack. pcs	Weight		Item No.
			kg/100	pcs.	
VMS-RS	1000 x 100 x 3	3	47.000		7203870

Intumescent material /pc.

Insulation forming strip for the application in sealing compound system when feeding through flammable pipes.

Please protect against sunlight. When stored in a dry environment it has an unlimited lifespan.



Identification plate

Type	Language	Pack. pcs	Weight		Item No.
			kg/100	pcs.	
VMS-KS DE	German	1	2.400		7203874
VMS-KS EN	English	1	2.400		7203878
VMS-KS IT	Italian	1	2.400		7203876

PVC Polyvinylchloride /pc.

Identification plate for self-labelling of the insulation of the sealing compound system to the IMO A.754(18) with a waterproof and lightproof felt tip pen.

Including 2 cable ties for fastening onto the cable or onto the cable tray system in the area of the insulation.



OBO Bettermann Holding GmbH & Co. KG
P.O. Box 1120
58694 Menden
GERMANY

Customer Service
Tel.: +49 23 73 89 - 17 00
Fax: +49 23 73 89 - 12 38
export@obo.de

www.obo-bettermann.com

Building Connections

