

DATA SHEET: LIGHT UNIT, INSTALLATION ON 19"-RAILS, BY MAGNET OR SCREWING



SCHRACK-INFO

- Lighting for Racks and Industry
- Compact-Lighting 26 mm wide
- Rotor with fastening units
- To fix with and always without tools
- Magnet is always used for fastening
- With fix mounted connection cable
- On metal, on profiles, into the 19"-rack
- Fastening by magnet, fastening by magnet and screw, fastening by magnet and snap in
- Screw on profiles have variable hole distance
- Worldwide usage: power supply unit 230VAC/50-60 Hz
- CE, ENEC, TÜV-GS
- With door switch connection (optional)

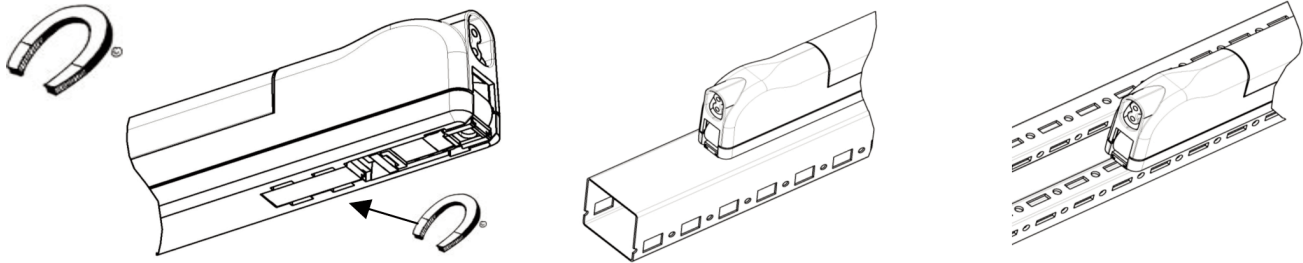
TECHNICAL DATA

Electrical Parameter	
Lamp nominal wattage	8W
Rated voltage/frequency	230 V AC $\pm 10\%$ / 50-60 Hz
Rated current	50 Hz - 0,030 A
110 V AC/230 V AC	60 Hz - 0,035 A
Connector door switch	2-pole mini-connector
	2,5 A
connection	2x0,75 mm ² , 1,5 m wiring colour: black
Protection type / -class	
Protection type / -class	IP 20/II
Light bulb	
Socket	T5/G5
Lamp start	Warm start
Service Life	10.000 h
Light colour	4.300 K (cold white)

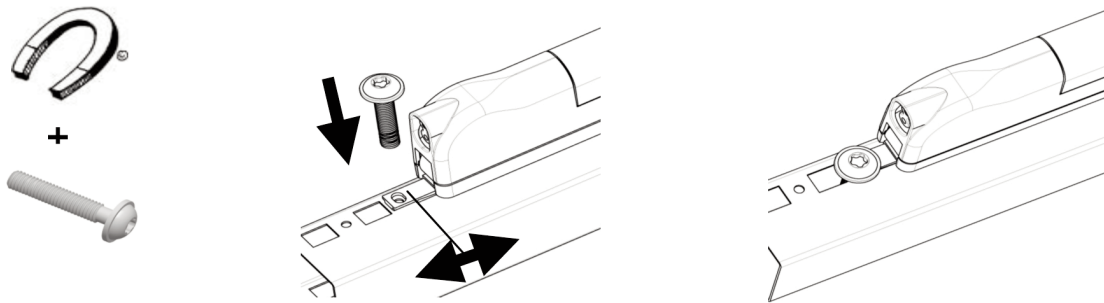
Norms and certifications	
Labeling	CE, ENEC
Testing standards	EN 60598 EN 55 015
EMC requirements	EN 61000-6-3 EN 61000-6-2
Directives	73/23/EWG, 89/336/EWG, 2000/55/EG
more Informations	
operating device	electronic
length, height, wide	448 x 54,5x26 mm
weight	approx. 400 gr.
working temperature	-15 to +45 C°
store temperature	-20 to +85 C°
Humidity at work /	5 - 85%
Humidity at store	5 - 95%

MOUNTING

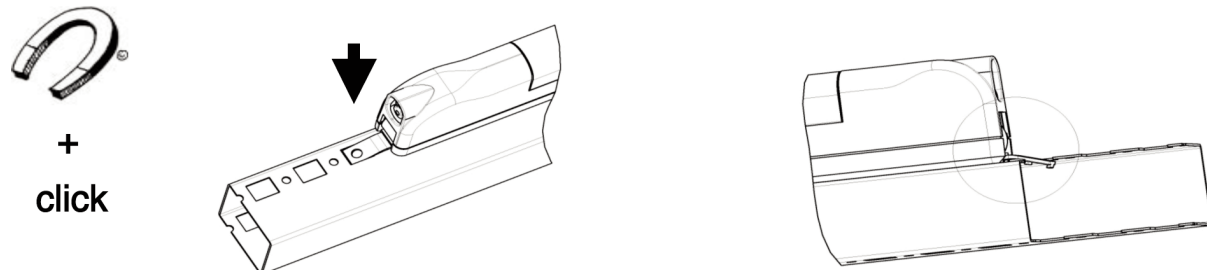
Fastening by Magnet (Demounting by moving out)



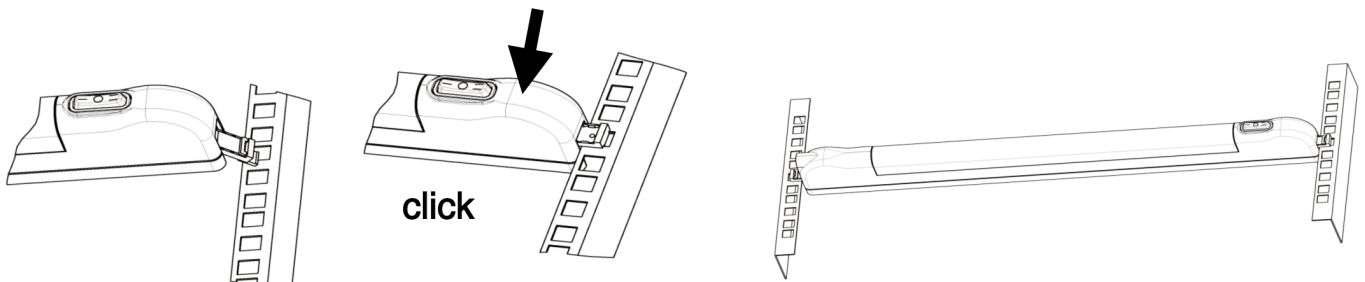
Magnet and screwing - hole centre distance from 455 to 475 mm



Magnet + snap into Profil



snap into 19" - Rack



DESCRIPTION	ORDER NUMBER
Light unit, Installation on 19"-rails, by magnet or screwing	DV900330-A
Cable for door switch for light unit DV900330-A	DV900332
Door switch	ASDSW010
Adapter for mounting door switch ASDSW010 into DS-, DSZ- and DSS (IP30)-enclosures	DSADA001