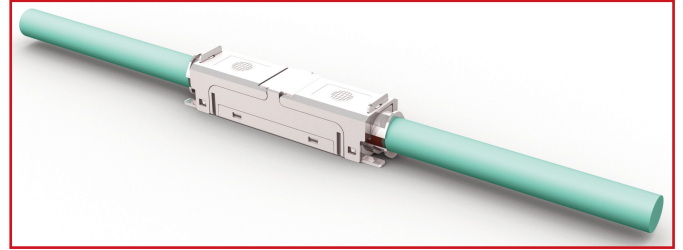
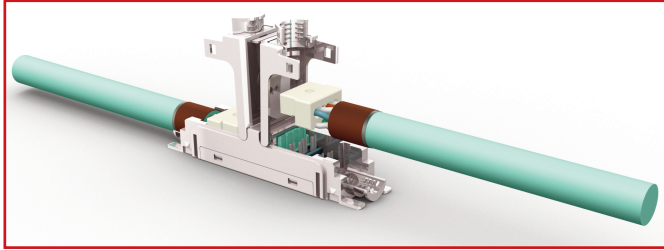


■ DATASHEET: REPAIR-KIT/CABLE EXTENDER FOR CONNECTING OF INSTALLATION CABLES, CAT.6_A/10GB



■ SCHRACK-INFO

By use of the Cat.6_A cable extender cables can be extended without much effort. Furthermore, unused cables can be reactivated and extended until the next wanted connection point. The limited space in the cable-duct is optimally used. The installer fixes the extender just at the end of the installed cable in the cable-duct or on the wall. After installation, the so-extended line can be used up to the maximum link length even for 10-Gigabit Ethernet transmissions and supports PoE+ (Power over Ethernet).

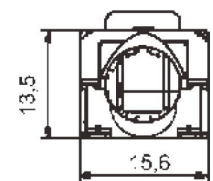
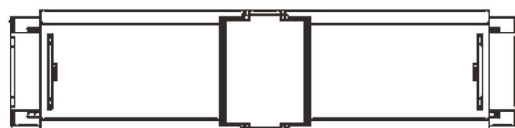
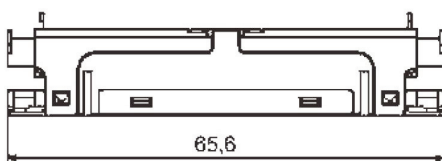
■ STANDARDS

IEEE 802.3; 10Base-T; 100Base-T; 1000Base-T; 1GBase-T; 10GBase-T; IEEE 802.5; 16 MB; ISDN; ATM, Telefon

■ ENVIRONMENTAL REQUIREMENTS

Degree of Protection: IP 20
Temperature Range: -40 °C ... +70 °C

■ DIMENSIONS



■ FEATURES

Housing material:	Zinc Die Cast, Nickel
Material Insulators:	PC aqua
Gold plating in contact area:	30 μ"
Contact:	AWG 24-22
Cable diameter:	5 – 9,5 mm
Assembly:	Screw
EMC:	360°-Shielding
Electrical Performance:	Cat. 6 _A , the extended Link: Class E _A
Length:	Linklength up to 90 m
Linkextension:	without additional twist in the cable
Package Unit:	1 piece in a polybag

■ ELECTRICAL PROPERTIES

Contact Resistance:	≤ 20 mΩ
Insulation resistance between the contacts:	500 MΩ
Dielectric strength Contact - Contact:	1000 V DC/AC peak
Dielectric strength Contact - Shield:	≥ 1500 V DC/AC peak
Current rating at 50 °C:	1,25 A
PoE+ according IEEE 802.3at:	PoE+

■ TRANSMISSION CHARACTERISTICS

10 Gbit:	is supported
Cat. 6 _A :	ISO/IEC 11801

DESCRIPTION

Repair-Kit for connecting of installation cables, Cat.6_A ISO/IEC, TOOLLESS, for AWG24-AWG22, Slim-version

ORDER NO.

HCAT6AREPK