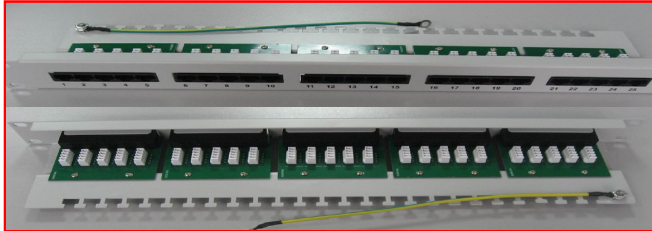
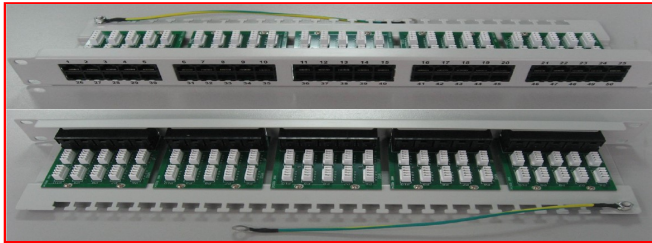
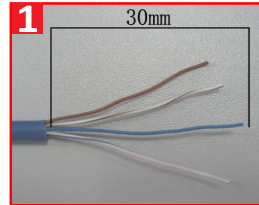
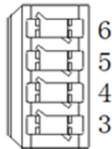


- **MONTAGEANLEITUNG:** Patchpanel 25/50 xRJ45 ungeschirmt, ISDN, 19", 1HE, RAL7035  
**INSTRUCTION SHEET:** Patchpanel 25/50 xRJ45 unshielded, ISDN, 19", 1U, RAL7035

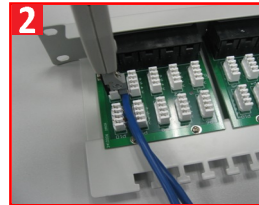


IDC (KRONE)



**1** Kabel ca. 30mm abisolieren

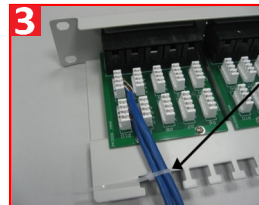
Strip approximately 30mm of the cable jacket.



**2**

**Aufschalten der Adern mit dem LSA Werkzeug HKRONELSA. Geeignet für Draht-Durchmesser 0,5 - 0,6mm.**

Use the punch tool HKRONELSA to punch and connect the wires on the IDC. Suitable for wire-diameter 0.5 - 0.6mm.



**3**

**Kabelbinder / Cable tie**

**Kabel mit dem Kabelbinder zugentlasten.**

Use the cable tie to manage these cables, then complete the installation.

**BEZEICHNUNG / DESCRIPTION**

**Patchpanel 25xRJ45 ungeschirmt, ISDN, 19", 1HE, RAL7035 / Patchpanel 25xRJ45 unshielded, ISDN, 19", 1U, RAL7035**

**BESTELLNUMMER / ORDER NO.**

HSERU25IGC

**Patchpanel 50xRJ45 ungeschirmt, ISDN, 19", 1HE, RAL7035 / Patchpanel 50xRJ45 unshielded, ISDN, 19", 1U, RAL7035**

HSERU50IGC

**LSA Auflegewerkzeug mit Sensor, Grau / LSA Crimping tool with sensor, Grey**

HKRONELSA