

■ Data Outlets 45x45mm empty for Schrack Format A (SFA) and Schrack Format B (SFB)



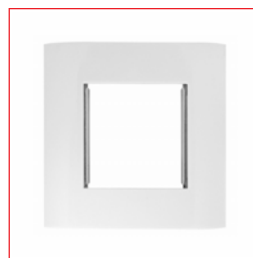
HSEMD02W2F



HSEMD01W1F



HSEMDZ1W1F



HSEMDR2W0F



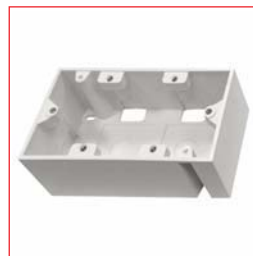
HSEMDR4W0F



HSEMDR6W0F



HSEAP842WF



HSEMAP4W3F



HSEMAP6W3F



HSEMHUT001

■ SCHRACK-INFO

These centralplates 45x45mm are suitable for installation of all SCHRACK modules in Schrack Format A (SFA) and Schrack Format B (SFB). The outlets come in color RAL9010.

DESCRIPTION	AVAILABLE	ORDER NO.
Centralplate for 2 modules, 45x45mm, angLED, RAL9010		HSEMD02W2F
Centralplate for 1 module, 45x22,5mm, straight, RAL9010		HSEMD01W1F
Blindcover 45x22,5mm, RAL9010		HSEMDZ1W1F
Frame Single 80x80mm for centralplate 45x45mm, RAL9010		HSEMDR2W0F
Frame Double 80x148mm for centralplates 45x45mm, RAL9010		HSEMDR4W0F
Frame Triple 80x205mm for centralplates 45x45mm, RAL9010		HSEMDR6W0F
Wallmount Box for HSED0xUVxS, HSEDx2UVxF, W=80 x H=40 x D=80mm, RAL9010		HSEAP842WF
Wallmount-Box W148 x H45 x D80mm for HSEMDR4W0F, RAL9010		HSEMAP4W3F
Wallmount-Box W204 x H45 x D80mm for HSEMDR6W0F, RAL9010		HSEMAP6W3F
DIN-rail adapter for 45x45 centralplates		HSEMHUT001



Order no. blue: on stock, usually ready for delivery on the day of order!