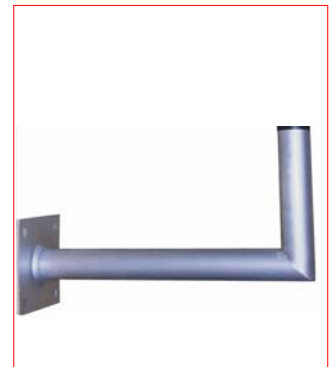
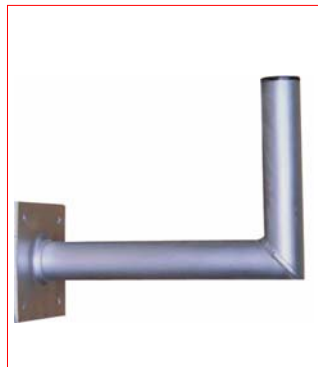
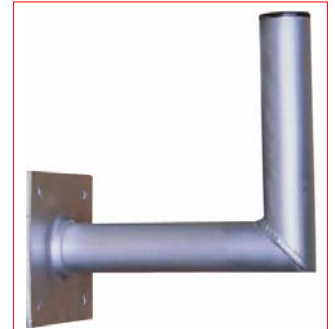
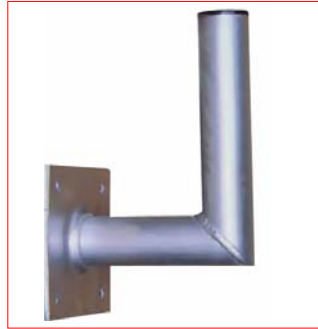
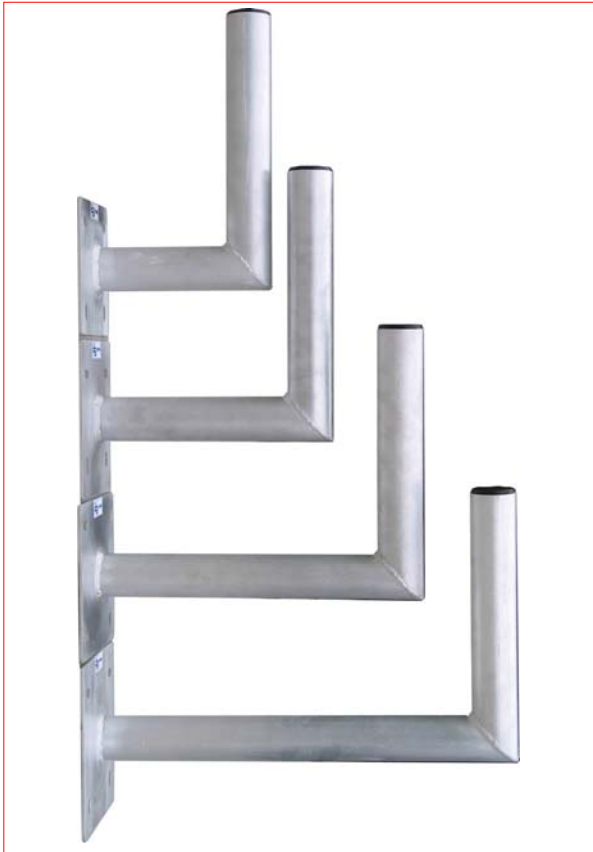


■ DATASHEET:
SAT WALL MOUNT BRACKETS ALUMINIUM



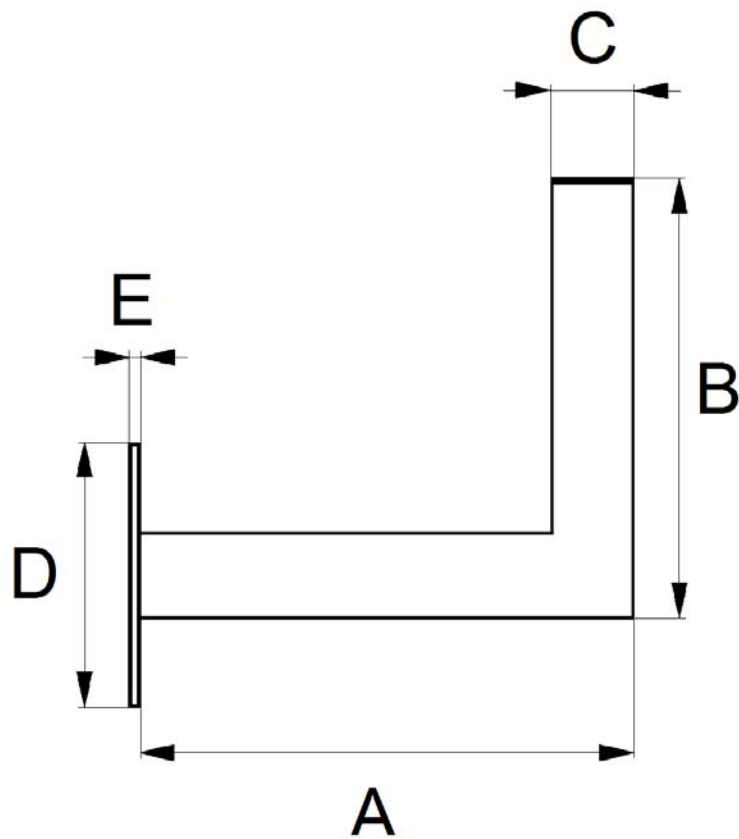
■ SCHRACK-INFO

The angled wallmount brackets are especially designed for fixing of satellite antennas to the wall. High stability at low weight. Suitable for satellite - antennas up to a diameter of 90cm.

■ TECHNICAL DATA

Material:	Aluminium
Material thickness Tube:	2,0mm
Tube diameter:	50mm
Mounting:	4x slots (100mm ² or 125mm ²) 2x horizontal and 2x vertikal direction
Approval:	RWTÜV GS

DIMENSIONS:



	A / mm	B / mm	C / mm	D / mm	E / mm	Slot Distance / mm ²	Weight / kg
HSATMW18A-	147	305	50	150	3	100	0,52
HSATMW25A-	247	305	50	150	3	100	0,60
HSATMW30A-	297	305	50	150	3	100	0,71
HSATMW35A-	347	305	50	175	3	125	0,73
HSATMW45A-	447	305	50	175	3	125	0,81

PRODUCTS:

DESCRIPTION	ORDER NUMBER
SAT Wall Mount Bracket, Walldistance=150mm, H=250mm, Mounting Plate=150x150mm, Diameter=50mm, Aluminium	HSATMW18A-
SAT Wall Mount Bracket, Walldistance=250mm, H=250mm, Mounting Plate=150x150mm, Diameter=50mm, Aluminium	HSATMW25A-
SAT Wall Mount Bracket, Walldistance=300mm, H=250mm, Mounting Plate=150x150mm, Diameter=50mm, Aluminium	HSATMW30A-
SAT Wall Mount Bracket, Walldistance=350mm, H=250mm, Mounting Plate=175x175mm, Diameter=50mm, Aluminium	HSATMW35A-
SAT Wall Mount Bracket, Walldistance=450mm, H=250mm, Mounting Plate=175x175mm, Diameter=50mm, Aluminium	HSATMW45A-