

GEU-2429 Version: 2



## 26-Port Gigabit Switch, 2 x SFP

### Easily boost your networking throughput

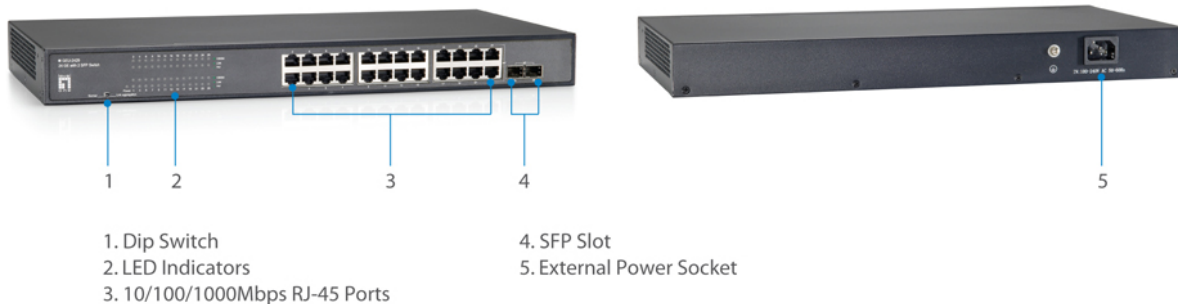
The GEU-2429 24 Gigabit ports that lead you to a real Gigabit connection. Users are now able to transfer large and high bandwidth-needed files faster and hence get a real efficiency improvement. In addition to the copper ports, 2 of those ports support fiber connection with the equipped SFP ports for obtaining long-distance communication.

### Offers users with fast and reliable network

The store-and-forward architecture filters errors and forwards packets in a non-blocking environment. Flow control ensures the correctness of data transmitting. The 802.3x and backpressure flow control mechanisms work respectively for full and half duplex modes.

### Easy installation and maintenance

It supports Nway auto-negotiation protocol that detects the networking speed (10/100/1000 Mbps) and the duplex modes (Full/Half ) automatically. Auto-MDI/MDI-X function alleviates the effort to use crossover cables. Also, rich diagnostic LEDs are provided for users to get real-time information of the connection status.



### Key Features

- 24 Gigabit Ethernet ports and 2 Gigabit SFP slots
- 
- 9K jumbo frames to increase data transfer rates
- 10/100/1000Mbps wire speed transmission and reception
- Supports 8K MAC address auto-learning and auto-aging
- IEEE 802.3x Flow Control protects against lost packets for reliable data transmission
- Minimize carbon footprint with advanced energy efficient technology (IEEE 802.3az)
- Static trunk function for port aggregation

## Works With



### **GVT-0300**

1.25Gbps Multi-mode SFP Transceiver, 550m, 850nm



### **GVT-0301**

1.25Gbps Single-mode SFP Transceiver, 10km, 1310nm



### **GVT-0302**

1.25Gbps Single-mode SFP Transceiver, 80km, 1550nm

## Specifications

### System Specifications

#### Standards & Protocols:

IEEE802.3(10BASE-T),  
IEEE802.3u(100BASE-T),  
IEEE802.3ab(1000BASE-T),  
IEEE802.3az Energy Efficient Ethernet

#### Memory:

16Mbit

#### Buffer Memory:

4.1Mbit

#### Port:

24 x RJ45 10/100/1000Mbps  
2 x 1000BASE-X SFP slots

#### Indicator:

Power, LINK/ACT, 1000M

#### Transmission Method:

Store- forward

#### Power Input:

12V/2A

#### Backplane (Gbps):

52Gbps

#### MAC Address Table:

8K

#### Data Rate:

1488000pps

### Features

#### General:

Static trunk function for port aggregation (trunk port: 23-26 )

## Performance

Jumbo Frame (K):  
9KB

## Environment

Power Saving:  
YES

Operating Temperature (°C):  
0-40°C

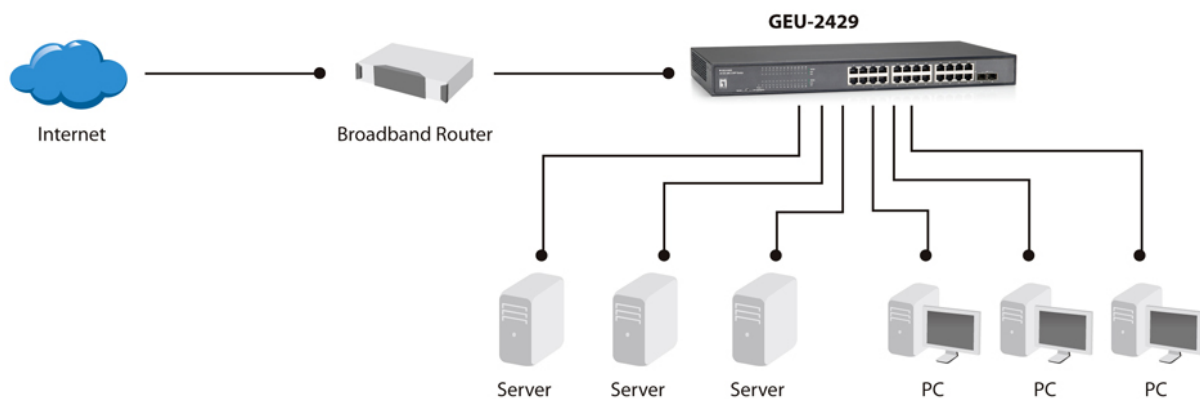
Operating Humidity (Non-condensing):  
10%~90%

## Physical Specifications

Dimensions (W x D x H mm):  
440x220x44mm

Weight (g):  
2kg

## Diagram



## Order Information

GEU-2429

## Package Contents

GEU-2429  
Power Cord  
19" Rack Mount Kit  
Quick Installation Guide

No liability or responsibility for any errors or omissions in the content.  
Specifications are subject to change without notice.  
All mentioned brand names are registered trademarks and property of their owners.  
Copyright © Digital Data Communications GmbH, Germany. All Rights Reserved.