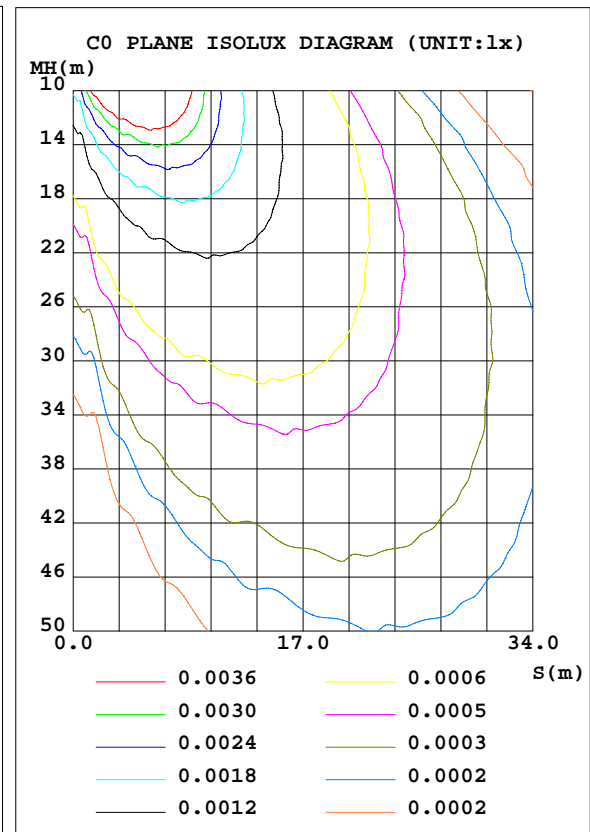
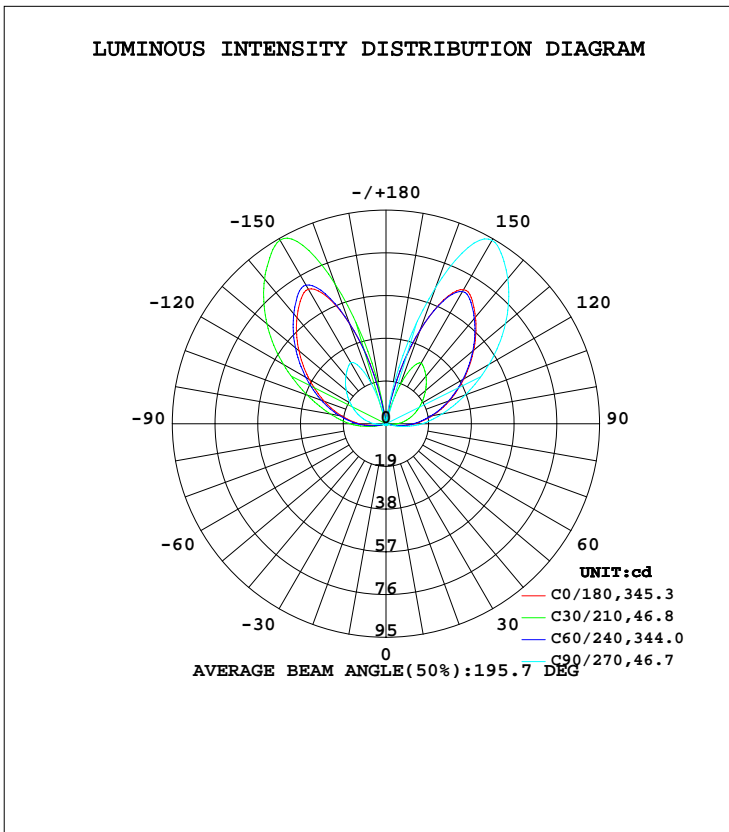


LUMINAIRE PHOTOMETRIC TEST REPORT

NAME:6W SMD LED GARDEN FIXTURE	TYPE:DALLAS-300	WEIGHT:
MODEL.:BG43-02302	DIM.:	SERIAL No.:01
MFR.:	SUR.:0	Shielding Angle:

DATA OF LAMP		PHOTOMETRIC DATA			
MODEL		Imax(cd)	94.27	S/MH(C0/180)	2.90
NOMINAL POWER(W)	7	LOR(%)	100.0	S/MH(C90/270)	3.52
RATED VOLTAGE(V)	100-240	TOTAL FLUX(lm)	240.12	η UP, DN(C0-180)	42.9,2.7
NOMINAL FLUX(lm)	240.125	CIE CLASS	INDIRECT	η UP, DN(C180-360)	51.2,3.2
LAMPS INSIDE	1	η up(%)	94.1	CIBSE SHR NOM	1.00
TEST VOLTAGE(V)	230	η down(%)	5.9	CIBSE SHR MAX	1.15



C Range: 0 - 360DEG
 C Interval: 15.0DEG
 Test Speed: HIGH
 Temperature:25.3DEG
 Operators:cai
 Test Date:2016-09-05

γ Range: 0 - 180DEG
 γ Interval: 1.0DEG
 Test System:EVERFINE GO-2000B_V1 SYSTEM V2.0.366
 Humidity:65.0%
 Test Distance:10.320m [K=1.0000]
 Remarks:

ZONAL FLUX DIAGRAM

ZONAL FLUX DIAGRAM:

γ	C0	C45	C90	C135	C180	C225	C270	C315	γ	Φ zone	Φ total	%lum, lamp
10	0.4303	0.4814	0.4493	0.4688	0.4434	0.4681	0.4879	0.4429	0- 10	0.0350	0.0350	0.01,0.01
20	0.6898	0.7283	0.7152	0.7029	0.6651	0.7090	0.7347	0.6962	10- 20	0.1689	0.2039	0.08,0.08
30	0.8736	0.9308	0.9621	0.8801	0.8611	0.9369	0.9499	0.8990	20- 30	0.3832	0.5871	0.24,0.24
40	0.8612	0.9877	0.9562	0.9181	0.8483	0.9434	1.032	0.8928	30- 40	0.5907	1.178	0.49,0.49
50	0.7599	0.9750	0.8865	0.8927	0.7531	0.8738	1.057	0.8105	40- 50	0.7028	1.881	0.78,0.78
60	0.6207	0.8991	0.8232	0.8294	0.6077	0.8041	1.026	0.7660	50- 60	0.7517	2.632	1.1,1.1
70	0.5003	0.8421	0.8609	0.7850	0.5000	0.8167	1.000	0.7598	60- 70	0.7700	3.402	1.42,1.42
80	4.931	2.397	6.892	2.492	4.484	6.844	1.135	6.603	70- 80	2.154	5.557	2.31,2.31
90	12.74	7.810	16.19	8.153	11.99	15.56	5.031	15.35	80- 90	8.716	14.27	5.94,5.94
100	20.90	12.84	25.33	13.50	19.92	24.53	9.255	24.11	90-100	16.41	30.68	12.8,12.8
110	30.12	18.34	37.52	19.45	29.17	36.35	13.70	35.30	100-110	24.32	55.00	22.9,22.9
120	39.96	24.11	52.93	25.82	39.35	50.68	18.28	48.46	110-120	32.02	87.02	36.2,36.2
130	50.93	30.47	69.38	33.09	50.51	65.86	23.10	62.64	120-130	38.27	125.3	52.2,52.2
140	61.85	36.84	84.26	40.51	61.60	79.62	27.78	75.83	130-140	41.24	166.5	69.4,69.4
150	68.91	41.28	94.22	46.00	69.12	88.80	31.33	84.92	140-150	39.24	205.8	85.7,85.7
160	43.94	26.59	64.26	31.30	47.29	59.82	18.73	56.10	150-160	26.89	232.7	96.9,96.9
170	5.094	0.1255	10.43	2.492	6.993	1.665	0	5.836	160-170	7.360	240.0	100,100
180	0	0	0	0	0	0	0	0	170-180	0.0970	240.1	100,100
DEG	LUMINOUS INTENSITY:cd									UNIT:lm		

Conical surface Flux(90deg): 1.5193 lm

%lum = 0.6%

%lamp = 0.6%

Conical surface Flux(120deg): 2.6323 lm

%lum = 1.1%

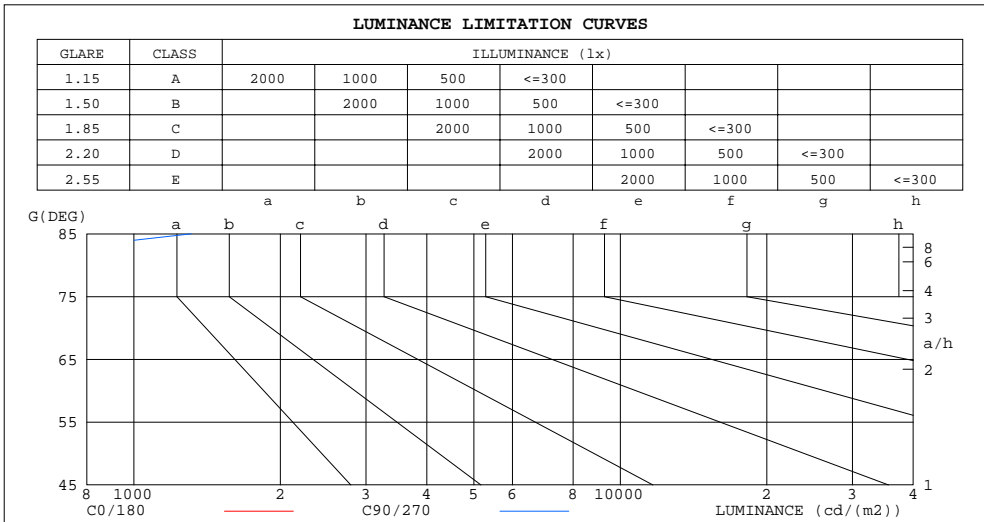
%lamp = 1.1%

C Range: 0 - 360DEG
 C Interval: 15.0DEG
 Test Speed: HIGH
 Temperature:25.3DEG
 Operators:cai
 Test Date:2016-09-05

γ Range: 0 - 180DEG
 γ Interval: 1.0DEG
 Test System:EVERFINE GO-2000B_V1 SYSTEM V2.0.366
 Humidity:65.0%
 Test Distance:10.320m [K=1.0000]
 Remarks:

LUMINANCE LIMITATION CURVES

NAME: 6W SMD DALLAS-300 LED GARDEN FIXTURE	TYPE:DALLAS-300	WEIGHT:
MODEL NO.:BG43-02302	DIM.:	SERIAL No.:01
MFR.:	SUR.:0	Shielding Angle:



LUMINANCE cd/(m2)		
G(DEG)	C0/180	C90/270
85	1011	1311
80	284	397
75	60	113
70	15	25
65	13	19
60	12	16
55	12	15
50	12	14
45	11	13

C Range: 0 - 360DEG
 C Interval: 15.0DEG
 Test Speed: HIGH
 Temperature: 25.3DEG
 Operators: cai
 Test Date: 2016-09-05

γ Range: 0 - 180DEG
 γ Interval: 1.0DEG
 Test System: EVERFINE GO-2000B_V1 SYSTEM V2.0.366
 Humidity: 65.0%
 Test Distance: 10.320m [K=1.0000]
 Remarks:

WEC AND CCEC

NAME:6W SMD LED GARDEN FIXTURE	TYPE:DALLAS-300	WEIGHT:
MODEL.:BG43-02302	DIM.:	SERIAL No.:01
MFR.:	SUR.:0	Shielding Angle:

ρcc	80%			70%			50%			30%			10%			0
ρw	50%	30%	10%	50%	30%	10%	50%	30%	10%	50%	30%	10%	50%	30%	10%	0
ρfc	20%			20%			20%			20%			20%			0
RCR	RCR:Room Cavity Ratio						Wall Exitance Coefficients(WEC)									
0.0																
1.0	.298	.170	.054	.263	.150	.048	.196	.113	.036	.135	.078	.025	.079	.046	.015	
2.0	.260	.142	.044	.227	.125	.039	.166	.092	.029	.110	.062	.019	.058	.033	.010	
3.0	.234	.124	.037	.204	.109	.033	.148	.080	.024	.096	.053	.016	.048	.027	.008	
4.0	.213	.111	.033	.186	.097	.029	.134	.071	.021	.087	.046	.014	.042	.023	.007	
5.0	.197	.100	.029	.171	.088	.026	.123	.064	.019	.079	.042	.012	.037	.020	.006	
6.0	.182	.091	.026	.159	.080	.023	.114	.059	.017	.073	.038	.011	.034	.018	.005	
7.0	.169	.084	.024	.148	.074	.021	.106	.054	.015	.067	.035	.010	.031	.016	.005	
8.0	.158	.077	.022	.138	.068	.019	.099	.050	.014	.063	.032	.009	.029	.015	.004	
9.0	.148	.072	.020	.129	.063	.018	.093	.046	.013	.059	.030	.008	.027	.014	.004	
10.0	.140	.067	.019	.122	.059	.016	.088	.043	.012	.056	.028	.008	.025	.013	.004	

ρcc	80%			70%			50%			30%			10%			0
ρw	50%	30%	10%	50%	30%	10%	50%	30%	10%	50%	30%	10%	50%	30%	10%	0
ρfc	20%			20%			20%			20%			20%			0
RCR	RCR:Room Cavity Ratio						Ceiling Cavity Exitance Coefficients(CCEC)									
0.0	.907	.907	.907	.775	.775	.775	.529	.529	.529	.304	.304	.304	.097	.097	.097	
1.0	.902	.879	.858	.772	.754	.738	.528	.519	.511	.304	.300	.297	.097	.097	.096	
2.0	.895	.859	.829	.767	.740	.717	.526	.512	.500	.303	.298	.293	.097	.096	.096	
3.0	.889	.845	.811	.762	.729	.703	.523	.507	.493	.302	.296	.291	.097	.096	.095	
4.0	.883	.835	.798	.757	.721	.693	.521	.503	.488	.301	.294	.289	.097	.096	.095	
5.0	.877	.826	.789	.753	.715	.687	.519	.499	.485	.300	.293	.288	.097	.096	.095	
6.0	.871	.820	.783	.749	.710	.682	.516	.497	.482	.300	.292	.287	.097	.096	.095	
7.0	.865	.814	.778	.744	.706	.678	.514	.495	.481	.299	.292	.286	.097	.095	.095	
8.0	.860	.810	.775	.741	.702	.676	.512	.493	.479	.298	.291	.286	.096	.095	.095	
9.0	.855	.806	.772	.737	.699	.673	.511	.491	.478	.297	.290	.285	.096	.095	.094	
10.0	.851	.802	.770	.733	.697	.672	.509	.490	.477	.297	.290	.285	.096	.095	.094	

C Range: 0 - 360DEG
 C Interval: 15.0DEG
 Test Speed: HIGH
 Temperature:25.3DEG
 Operators:cai
 Test Date:2016-09-05

γ Range: 0 - 180DEG
 γ Interval: 1.0DEG
 Test System:EVERFINE GO-2000B_V1 SYSTEM V2.0.366
 Humidity:65.0%
 Test Distance:10.320m [K=1.0000]
 Remarks:

UGR(Unified Glare Rating) Table

NAME:6W SMD LED GARDEN FIXTURE	TYPE:DALLAS-300	WEIGHT:
MODEL.:BG43-02302	DIM.:	SERIAL No.:01
MFR.:	SUR.:0	Shielding Angle:

ceiling/cavity	0.7	0.7	0.5	0.5	0.3	0.7	0.7	0.5	0.5	0.3
walls	0.5	0.3	0.5	0.3	0.3	0.5	0.3	0.5	0.3	0.3
working plane	0.2	0.2	0.2	0.2	0.2	0.2	0.2	0.2	0.2	0.2
Room dimensions	Viewed crosswise					Viewed endwise				
x = 2H y = 2H	-11.2	-10.6	-10.0	-9.4	-7.6	-11.9	-11.2	-10.7	-10.0	-8.2
3H	-8.9	-8.3	-7.7	-7.1	-5.3	-9.0	-8.4	-7.7	-7.2	-5.4
4H	-6.2	-5.7	-5.0	-4.4	-2.7	-2.1	-1.5	-0.8	-0.3	1.5
6H	2.5	3.0	3.7	4.2	6.0	6.2	6.7	7.5	7.9	9.7
8H	6.6	7.1	7.8	8.3	10.1	9.7	10.1	10.9	11.4	13.2
12H	10.4	10.9	11.7	12.1	13.9	13.0	13.5	14.3	14.7	16.5
4H 2H	-10.4	-9.8	-9.1	-8.6	-6.8	-10.9	-10.4	-9.7	-9.2	-7.4
3H	-7.4	-7.0	-6.2	-5.7	-3.9	-8.3	-7.8	-7.0	-6.6	-4.8
4H	-5.0	-4.6	-3.7	-3.3	-1.5	-1.0	-0.6	0.3	0.7	2.5
6H	3.0	3.4	4.3	4.6	6.4	7.5	7.9	8.8	9.1	11.0
8H	7.3	7.6	8.6	8.9	10.7	11.1	11.4	12.4	12.7	14.5
12H	11.4	11.7	12.7	13.0	14.8	14.5	14.8	15.8	16.1	17.9
8H 4H	-3.4	-3.1	-2.1	-1.8	0.0	-0.3	0.0	1.0	1.3	3.1
6H	3.4	3.7	4.7	4.9	6.7	8.3	8.6	9.6	9.9	11.7
8H	7.6	7.9	8.9	9.2	11.0	12.1	12.4	13.4	13.6	15.5
12H	12.1	12.3	13.4	13.6	15.4	15.9	16.1	17.2	17.4	19.2
12H 4H	-0.3	-0.0	1.0	1.2	3.1	-0.1	0.2	1.2	1.5	3.3
6H	4.5	4.8	5.8	6.0	7.9	8.5	8.7	9.8	10.0	11.8
8H	8.1	8.3	9.4	9.6	11.5	12.4	12.6	13.7	13.9	15.7
Variations with the observer position at spacings:										
S = 1.0H	+ 0.2 / - 0.2					+ 0.2 / - 0.2				
1.5H	+ 0.5 / - 0.5					+ 0.4 / - 0.5				
2.0H	+ 0.7 / - 0.7					+ 0.5 / - 0.6				

CIE Pub.117, 240.1 lm Total Lamp Luminous Flux Correct (8log(F/F0) = -5.0)

C Range: 0 - 360DEG
 C Interval: 15.0DEG
 Test Speed: HIGH
 Temperature:25.3DEG
 Operators:cai
 Test Date:2016-09-05

γ Range: 0 - 180DEG
 γ Interval: 1.0DEG
 Test System:EVERFINE GO-2000B_V1 SYSTEM V2.0.366
 Humidity:65.0%
 Test Distance:10.320m [K=1.0000]
 Remarks:

UTILIZATION FACTORS TABLE

NAME:6W SMD LED GARDEN FIXTURE	TYPE:DALLAS-300	WEIGHT:
MODEL.:BG43-02302	DIM.:	SERIAL No.:01
MFR.:	SUR.:0	Shielding Angle:

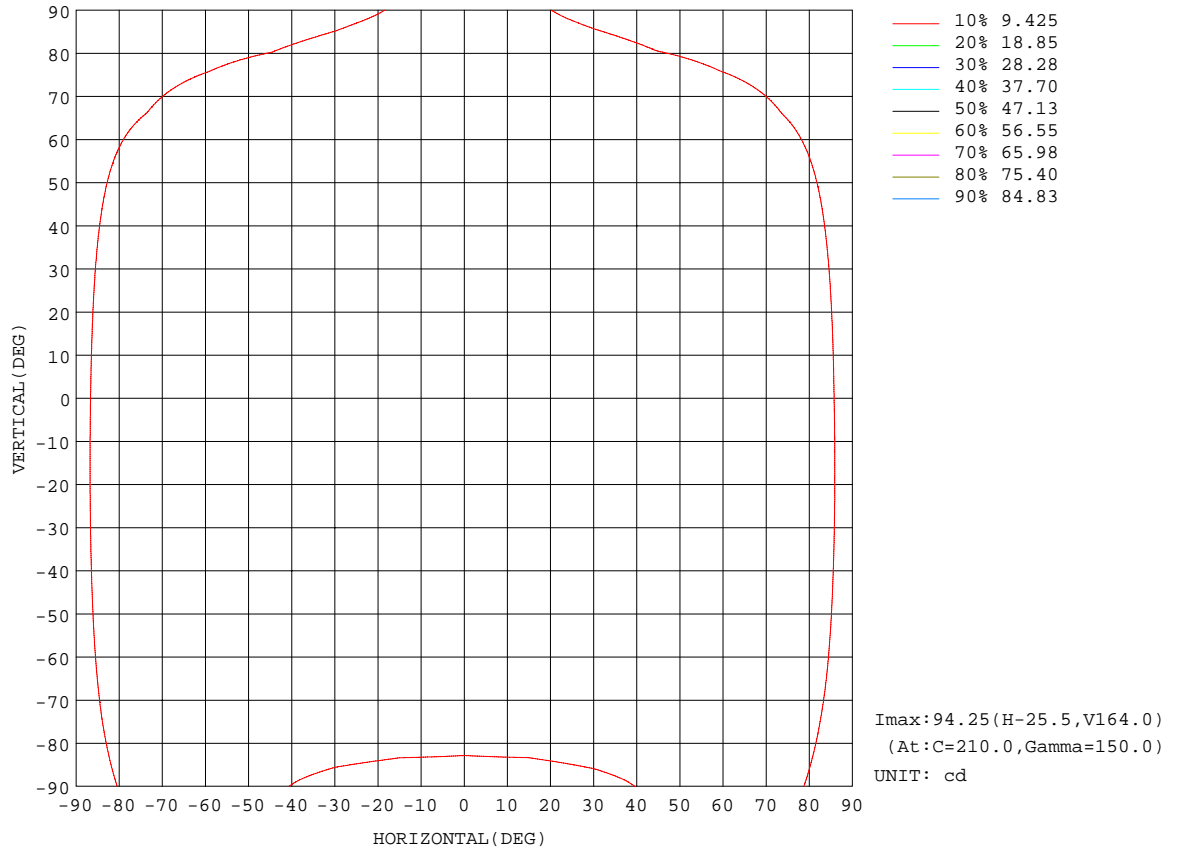
REFLECTANCE										
Ceiling	0.8	0.8	0.8	0.7	0.7	0.7	0.5	0.5	0.5	0
Walls	0.7	0.5	0.3	0.7	0.5	0.3	0.7	0.5	0.3	0
Working plane	0.2	0.2	0.2	0.2	0.2	0.2	0.2	0.2	0.2	0
ROOM INDEX	UTILIZATION FACTORS(PERCENT) $k(RI) \times RCR = 5$									
k = 0.60	30	19	13	26	17	11	19	12	8	0
0.80	39	26	19	34	23	17	25	17	12	0
1.00	45	33	25	39	29	22	29	21	16	1
1.25	52	40	31	45	35	27	32	25	20	1
1.50	57	45	37	50	39	32	35	28	23	1
2.00	65	54	45	56	46	39	40	33	28	1
2.50	70	59	51	60	51	45	43	37	32	1
3.00	73	64	56	63	55	49	45	39	35	1
4.00	78	70	63	67	61	55	48	43	39	2
5.00	81	74	68	70	64	59	49	45	42	2
ROOM INDEX	UF(total)									Direct
According to DIN EN 13032-2 2004			Suspended				SHRNOM = 1.25			

C Range: 0 - 360DEG
 C Interval: 15.0DEG
 Test Speed: HIGH
 Temperature:25.3DEG
 Operators:cai
 Test Date:2016-09-05

γ Range: 0 - 180DEG
 γ Interval: 1.0DEG
 Test System:EVERFINE GO-2000B_V1 SYSTEM V2.0.366
 Humidity:65.0%
 Test Distance:10.320m [K=1.0000]
 Remarks:

ISOCANDELA DIAGRAM

NAME:6W SMD LED GARDEN FIXTURE	TYPE:DALLAS-300	WEIGHT:
MODEL.:BG43-02302	DIM.:	SERIAL No.:01
MFR.:	SUR.:0	Shielding Angle:

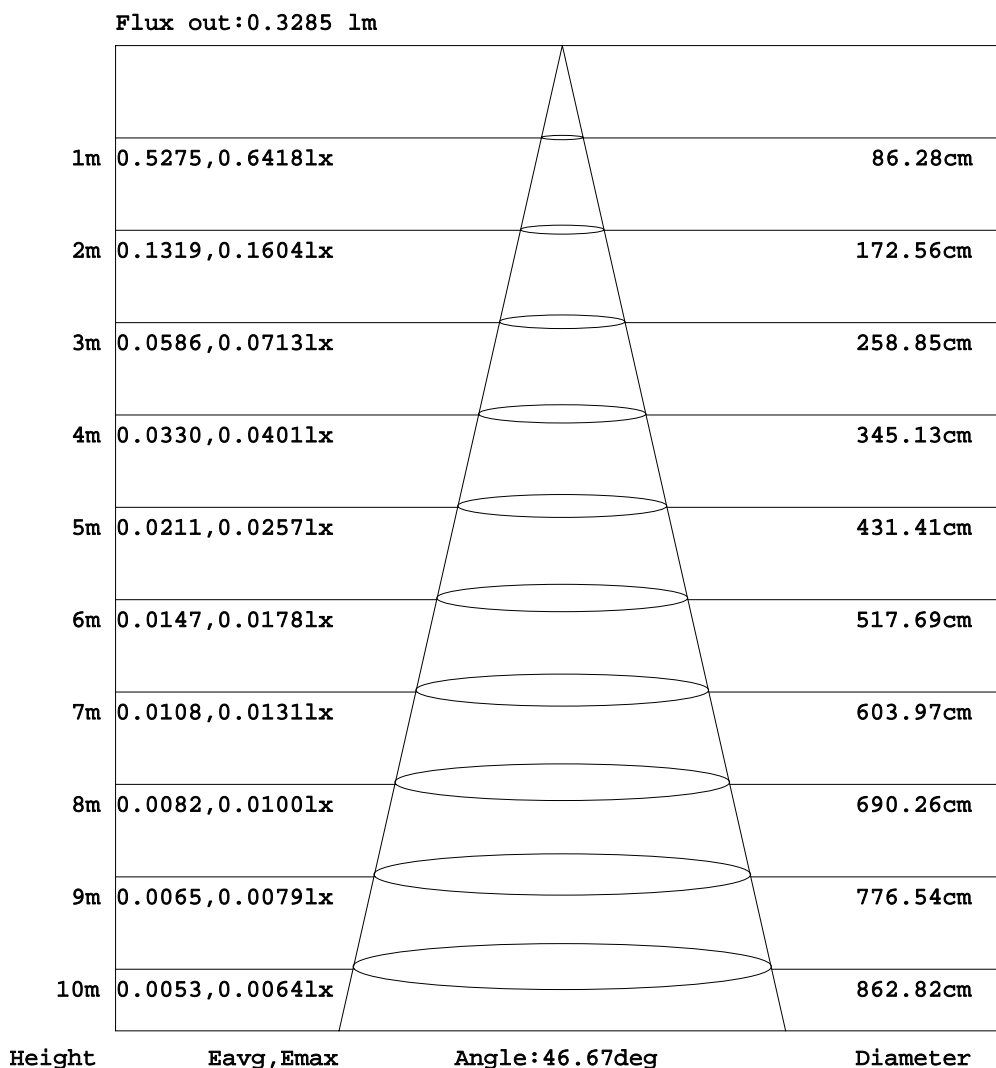


C Range: 0 - 360DEG
 C Interval: 15.0DEG
 Test Speed: HIGH
 Temperature: 25.3DEG
 Operators: cai
 Test Date: 2016-09-05

γ Range: 0 - 180DEG
 γ Interval: 1.0DEG
 Test System: EVERFINE GO-2000B_V1 SYSTEM V2.0.366
 Humidity: 65.0%
 Test Distance: 10.320m [K=1.0000]
 Remarks:

AAI Figure

NAME:6W SMD LED GARDEN FIXTURE	TYPE:DALLAS-300	WEIGHT:
MODEL.:BG43-02302	DIM.:	SERIAL No.:01
MFR.:	SUR.:0	Shielding Angle:

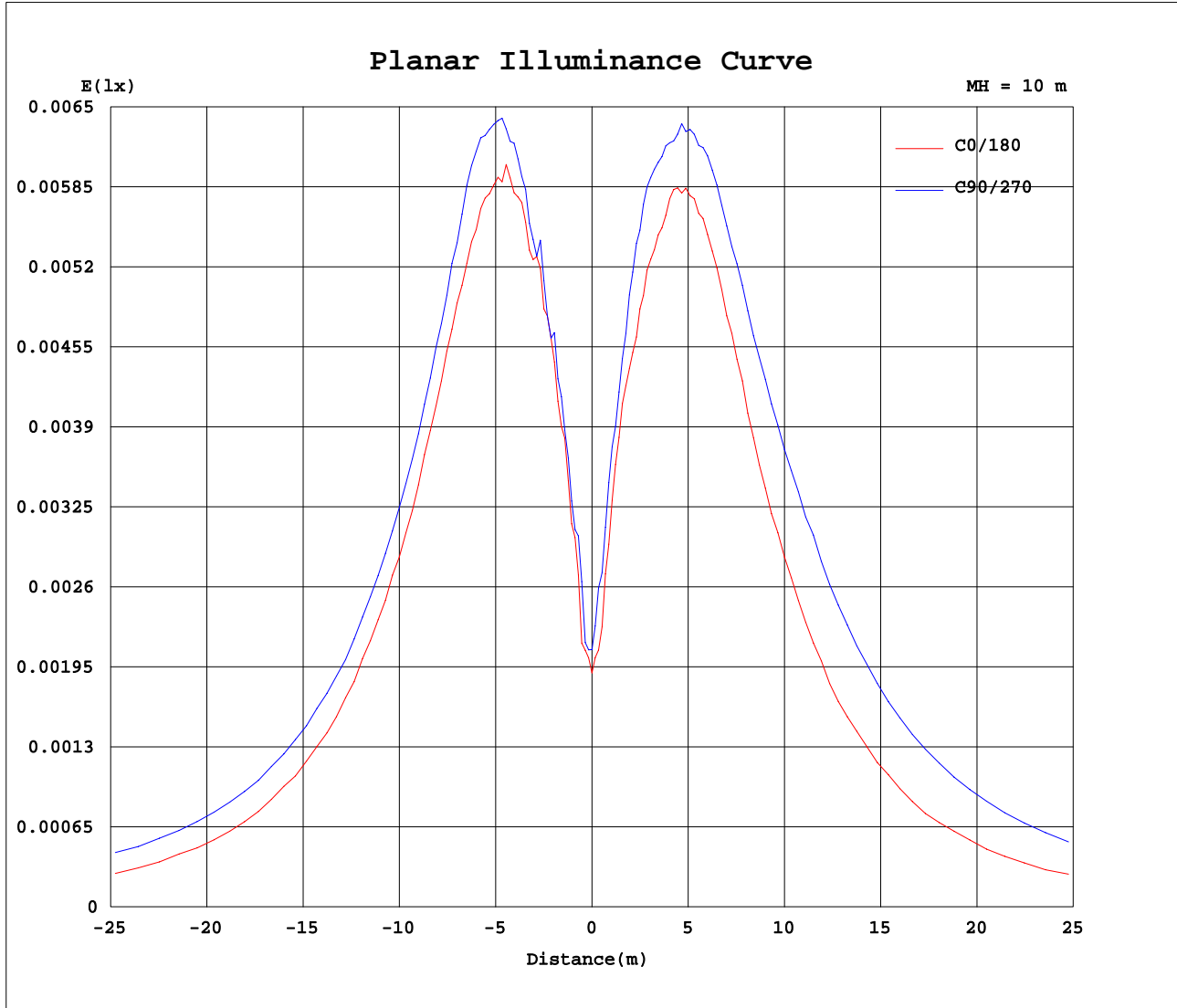


Note:The Curves indicate the illuminated area and the average illumination when the luminaire is at different distance.

C Range: 0 - 360DEG
 C Interval: 15.0DEG
 Test Speed: HIGH
 Temperature:25.3DEG
 Operators:cai
 Test Date:2016-09-05

γ Range: 0 - 180DEG
 γ Interval: 1.0DEG
 Test System:EVERFINE GO-2000B_V1 SYSTEM V2.0.366
 Humidity:65.0%
 Test Distance:10.320m [K=1.0000]
 Remarks:

Planar Illuminance Curve



C Range: 0 - 360DEG
C Interval: 15.0DEG
Test Speed: HIGH
Temperature: 25.3DEG
Operators: cai
Test Date: 2016-09-05

γ Range: 0 - 180DEG
 γ Interval: 1.0DEG
Test System: EVERFINE GO-2000B_V1 SYSTEM V2.0.366
Humidity: 65.0%
Test Distance: 10.320m [K=1.0000]
Remarks:

LUMINOUS DISTRIBUTION INTENSITY DATA

NAME:6W SMD LED GARDEN FIXTURE	TYPE:DALLAS-300	WEIGHT:
MODEL.:BG43-02302	DIM.:	SERIAL No.:01
MFR.:	SUR.:0	Shielding Angle:

Table--1

UNIT: cd

C(DEG) γ (DEG)	0	15	30	45	60	75	90	105	120	135	150	165	180	195	210	225	240	255	270
0	0.19	0.20	0.20	0.21	0.22	0.22	0.21	0.21	0.19	0.21	0.22	0.22	0.19	0.20	0.20	0.21	0.22	0.22	0.21
5	0.30	0.34	0.32	0.34	0.31	0.34	0.31	0.32	0.29	0.33	0.31	0.35	0.30	0.29	0.32	0.32	0.34	0.32	0.35
10	0.43	0.48	0.49	0.48	0.46	0.47	0.45	0.44	0.41	0.47	0.49	0.49	0.44	0.41	0.46	0.47	0.47	0.46	0.49
15	0.58	0.59	0.61	0.60	0.59	0.60	0.60	0.57	0.54	0.58	0.60	0.60	0.55	0.54	0.59	0.59	0.59	0.59	0.63
20	0.69	0.72	0.72	0.73	0.71	0.72	0.72	0.69	0.66	0.70	0.71	0.72	0.67	0.68	0.72	0.71	0.71	0.72	0.73
25	0.79	0.82	0.84	0.84	0.84	0.85	0.86	0.81	0.78	0.79	0.81	0.82	0.78	0.80	0.83	0.85	0.83	0.87	0.85
30	0.87	0.90	0.94	0.93	0.92	0.94	0.96	0.90	0.86	0.88	0.91	0.91	0.86	0.89	0.94	0.94	0.91	0.94	0.95
35	0.89	0.94	1.00	0.98	0.96	0.98	0.98	0.92	0.88	0.91	0.98	0.95	0.87	0.92	0.98	0.98	0.94	0.99	1.01
40	0.86	0.94	1.03	0.99	0.92	0.94	0.96	0.89	0.84	0.92	0.99	0.97	0.85	0.89	0.94	0.94	0.92	0.99	1.03
45	0.80	0.94	1.05	0.99	0.88	0.90	0.92	0.86	0.80	0.91	1.01	0.94	0.80	0.85	0.90	0.91	0.87	0.97	1.05
50	0.76	0.92	1.05	0.97	0.82	0.87	0.89	0.82	0.75	0.89	1.02	0.93	0.75	0.80	0.87	0.87	0.80	0.94	1.06
55	0.69	0.89	1.03	0.94	0.75	0.83	0.85	0.80	0.68	0.87	1.01	0.90	0.69	0.78	0.84	0.83	0.75	0.91	1.04
60	0.62	0.85	1.03	0.90	0.68	0.79	0.82	0.77	0.61	0.83	1.00	0.87	0.61	0.75	0.82	0.80	0.68	0.87	1.03
65	0.57	0.82	1.01	0.88	0.61	0.79	0.82	0.77	0.56	0.81	0.99	0.85	0.54	0.75	0.82	0.80	0.60	0.82	1.01
70	0.50	0.79	1.01	0.84	0.53	0.79	0.86	0.79	0.49	0.79	0.99	0.82	0.50	0.77	0.85	0.82	0.53	0.79	1.00
75	1.55	0.81	1.00	0.83	1.37	2.49	2.93	2.44	1.39	0.79	0.98	0.89	1.35	2.64	3.06	2.88	1.66	0.89	1.01
80	4.93	2.63	1.12	2.40	4.53	6.36	6.89	6.32	4.63	2.49	1.13	2.68	4.48	6.53	7.04	6.84	4.99	2.81	1.14
85	8.81	5.40	2.59	4.95	8.28	10.7	11.4	10.7	8.44	5.18	2.64	5.25	8.15	10.8	11.5	11.2	8.81	5.57	2.66
90	12.7	8.32	4.98	7.81	12.3	15.3	16.2	15.3	12.5	8.15	4.98	7.96	12.0	15.2	16.1	15.6	12.7	8.46	5.03
95	16.6	10.9	7.05	10.2	16.0	19.4	20.5	19.5	16.4	10.7	7.03	10.4	15.7	19.3	20.3	19.7	16.6	11.0	7.08
100	20.9	13.6	9.19	12.8	20.3	24.3	25.3	24.3	20.9	13.5	9.17	12.9	19.9	24.1	25.1	24.5	21.0	13.8	9.25
105	25.4	16.4	11.4	15.6	24.9	29.9	31.0	29.9	25.7	16.4	11.4	15.7	24.5	29.6	30.7	30.1	25.7	16.6	11.5
110	30.1	19.3	13.6	18.3	29.6	36.0	37.5	36.2	30.6	19.4	13.7	18.4	29.2	35.9	37.2	36.3	30.6	19.6	13.7
115	34.9	22.2	15.9	21.1	34.4	42.8	44.9	43.2	35.7	22.5	15.9	21.2	34.0	42.7	44.5	43.3	35.7	22.6	16.0
120	40.0	25.1	18.2	24.1	39.5	50.0	52.9	50.7	41.3	25.8	18.3	24.2	39.3	50.0	52.6	50.7	41.1	25.8	18.3
125	45.4	28.4	20.6	27.2	44.9	57.4	61.2	58.3	47.1	29.4	20.8	27.3	44.9	57.6	60.9	58.3	46.7	29.2	20.7
130	50.9	31.8	23.0	30.5	50.5	64.8	69.4	66.1	53.1	33.1	23.2	30.5	50.5	65.0	69.1	65.9	52.5	32.7	23.1
135	56.5	35.2	25.4	33.8	55.9	71.8	77.1	73.3	59.1	36.9	25.7	33.7	56.2	72.2	76.9	73.0	58.3	36.2	25.5
140	61.9	38.5	27.7	36.8	61.1	78.3	84.3	80.2	64.7	40.5	28.1	36.6	61.6	78.8	83.9	79.6	63.8	39.7	27.8
145	66.9	41.6	29.8	39.7	65.9	84.0	90.5	86.1	69.9	43.9	30.3	39.1	66.5	84.5	90.2	85.5	68.9	42.8	29.9
150	68.9	43.4	31.1	41.3	67.9	87.1	94.2	89.9	72.4	46.0	31.8	40.3	69.1	87.8	94.3	88.8	71.2	44.5	31.3
155	60.8	38.3	27.5	36.8	60.3	78.4	86.5	82.0	64.9	41.6	28.4	35.6	62.5	79.9	87.6	80.4	63.8	39.5	28.0
160	43.9	27.6	18.0	26.6	44.4	57.9	64.3	61.4	48.4	31.3	18.9	25.2	47.3	60.0	66.0	59.8	47.4	29.0	18.7
165	24.1	13.8	5.85	12.7	24.5	33.4	36.9	35.9	27.9	16.5	6.47	11.2	27.7	35.5	38.7	34.9	27.1	14.5	6.38
170	5.09	1.46	0.00	0.13	4.83	8.77	10.4	10.5	6.74	2.49	0.00	0.56	6.99	10.4	10.2	1.66	4.49	1.57	0.00
175	0.00	0.00	0.00	0.00	0.00	0.00	0.00	0.00	0.00	0.00	0.00	0.00	0.00	0.00	0.00	0.00	0.00	0.00	0.00
180	0.00	0.00	0.00	0.00	0.00	0.00	0.00	0.00	0.00	0.00	0.00	0.00	0.00	0.00	0.00	0.00	0.00	0.00	0.00

C Range: 0 - 360DEG
 C Interval: 15.0DEG
 Test Speed: HIGH
 Temperature:25.3DEG
 Operators:cai
 Test Date:2016-09-05

γ Range: 0 - 180DEG
 γ Interval: 1.0DEG
 Test System:EVERFINE GO-2000B_V1 SYSTEM V2.0.366
 Humidity:65.0%
 Test Distance:10.320m [K=1.0000]
 Remarks:

LUMINOUS DISTRIBUTION INTENSITY DATA

NAME:6W SMD LED GARDEN FIXTURE	TYPE:DALLAS-300	WEIGHT:
MODEL.:BG43-02302	DIM.:	SERIAL No.:01
MFR.:	SUR.:0	Shielding Angle:

Table--2

UNIT: cd

C(DEG) γ (DEG)	285	300	315	330	345														
0	0.21	0.19	0.21	0.22	0.22														
5	0.30	0.31	0.30	0.35	0.31														
10	0.48	0.46	0.44	0.47	0.46														
15	0.60	0.58	0.57	0.59	0.59														
20	0.72	0.69	0.70	0.72	0.72														
25	0.84	0.81	0.82	0.84	0.86														
30	0.92	0.88	0.90	0.94	0.94														
35	0.96	0.89	0.92	0.98	0.97														
40	0.97	0.87	0.89	0.96	0.94														
45	0.96	0.81	0.85	0.91	0.91														
50	0.94	0.77	0.81	0.87	0.87														
55	0.92	0.69	0.77	0.84	0.84														
60	0.89	0.62	0.77	0.82	0.81														
65	0.87	0.54	0.74	0.82	0.80														
70	0.84	0.50	0.76	0.85	0.82														
75	0.87	1.41	2.65	2.89	2.51														
80	2.57	4.64	6.60	6.89	6.45														
85	5.19	8.42	11.0	11.4	10.8														
90	7.95	12.3	15.4	16.1	15.3														
95	10.3	16.0	19.4	20.2	19.4														
100	12.9	20.1	24.1	24.9	24.0														
105	15.6	24.5	29.4	30.1	29.2														
110	18.3	28.9	35.3	36.2	35.2														
115	21.0	33.5	41.7	43.1	41.5														
120	23.8	38.4	48.5	50.5	48.4														
125	26.9	43.6	55.5	58.3	55.6														
130	30.0	48.9	62.6	66.2	62.6														
135	33.2	54.3	69.5	73.6	69.5														
140	36.3	59.5	75.8	80.5	75.9														
145	39.1	64.4	81.7	86.6	81.6														
150	40.6	66.6	84.9	90.9	85.0														
155	35.8	59.4	76.5	84.1	77.1														
160	25.7	43.6	56.1	62.5	56.8														
165	12.8	24.5	31.7	35.4	32.3														
170	1.29	3.27	5.84	10.8	9.35														
175	0.00	0.00	0.00	0.00	0.00														
180	0.00	0.00	0.00	0.00	0.00														

C Range: 0 - 360DEG
 C Interval: 15.0DEG
 Test Speed: HIGH
 Temperature:25.3DEG
 Operators:cai
 Test Date:2016-09-05

γ Range: 0 - 180DEG
 γ Interval: 1.0DEG
 Test System:EVERFINE GO-2000B_V1 SYSTEM V2.0.366
 Humidity:65.0%
 Test Distance:10.320m [K=1.0000]
 Remarks: