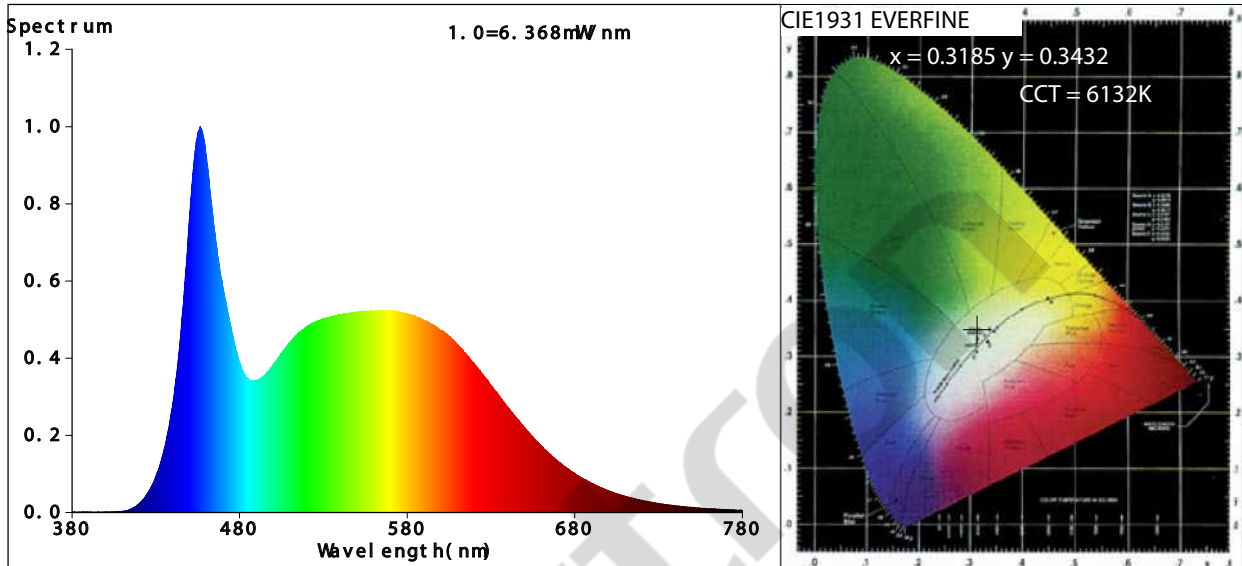


Light Source Test Report

Production Info

Product Spec: BA29-0034X G4 3W



Color Parameters:

Chromaticity Coordinate: $x=0.3185$ $y=0.3432$ / $u'=0.1965$ $v'=0.4766$

CCT=6132K (Duv=0.0075) Dominant WL: $L_d=500.5$ nm Purity=4.6%

Ratio: R=13.8% G=79.9% B=6.3% Peak WL: $L_p=456.5$ nm FWHM=28.4nm

Render Index: Ra=84.3 CRI=77.8 AvgR=77.7

R1 =83 R2 =93 R3 =95 R4 =79 R5 =82 R6 =88 R7 =86

R8 =68 R9 =11 R10=81 R11=79 R12=60 R13=86 R14=98 R15=77

Photo Parameters:

Flux = 220.6 lm Eff. : 93.50 lm/W Fe = 706.2 mW

Electrical parameters:

V = 229.67 V I = 0.01168 A P = 2.360 W PF = 0.8798

LEVEL: OUT WHITE: ANSI_6500K

Status: Integral T = 73 ms Ip = 50976 (78%)

Model : 00343
Tester:
Temperature: 25.3Deg
Manufacturer:

Number : 6000K15
Date: 2018-05-21 17:00:16
Humidity: 65.0%
Remarks: