

PHOTOMETRIC TEST REPORT

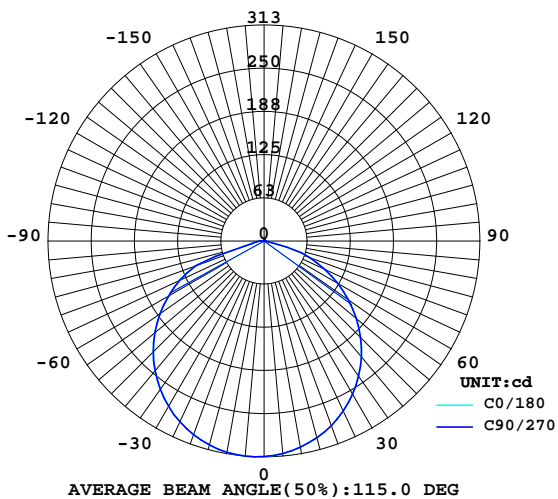
LUMINAIRE PHOTOMETRIC TEST REPORT

Report number:

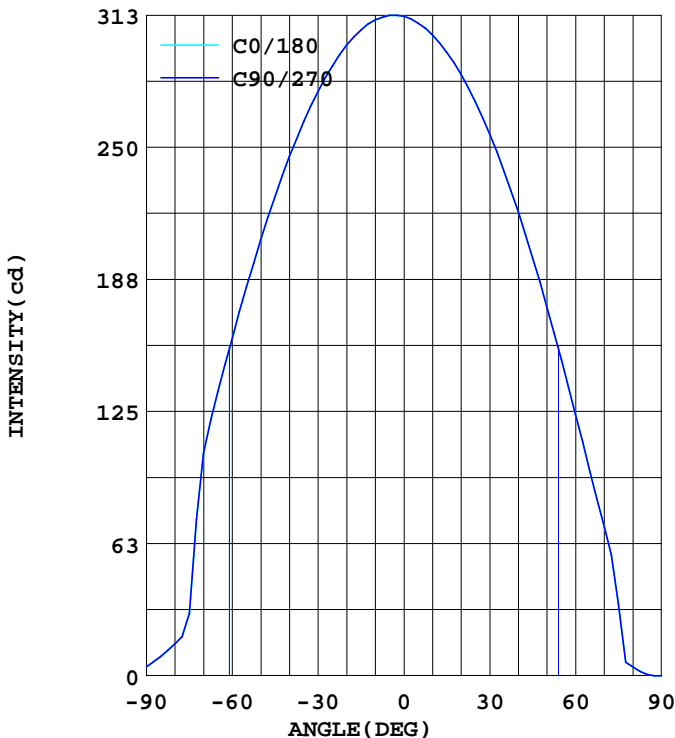
BRAND: BRAYTRON			
NAME: 15W SMD LED PANEL LIGHT		TYPE:SMD-CRD	WEIGHT:
MODEL NO.:BP01-31510		DIMENSION:	SERIAL No.:

DATA OF LAMP		Imax(cd)	312.8	S/MH(C0/180)	1.32
MODEL	BP01-31510	EFFICIENCY(%)	100.0	S/MH(C90/270)	1.32
NOMINAL POWER(W)	14	TOTAL FLUX(lm)	880.90	Voltage(V)	220.6
RATED VOLTAGE(V)	220	EFFICIENCY(lm/W)	67.3	Current(A)	0.117
NOMINAL FLUX(lm)	880.9	η up(%)	0.7	Power(W)	13.08
LAMPS QUANTITY	1	η down(%)	99.3	Power Factor(PF)	0.505
TEST VOLTAGE(V)	220.6	Effictive Flux(lm)	0.0	EEI	0.000

LUMINOUS INTENSITY DISTRIBUTION



LUMINOUS INTENSITY DISTRIBUTION



Test System:HOPOO HPG1900
 Temperature:25.3DEG
 Operators:
 Test Date:2017.08.14

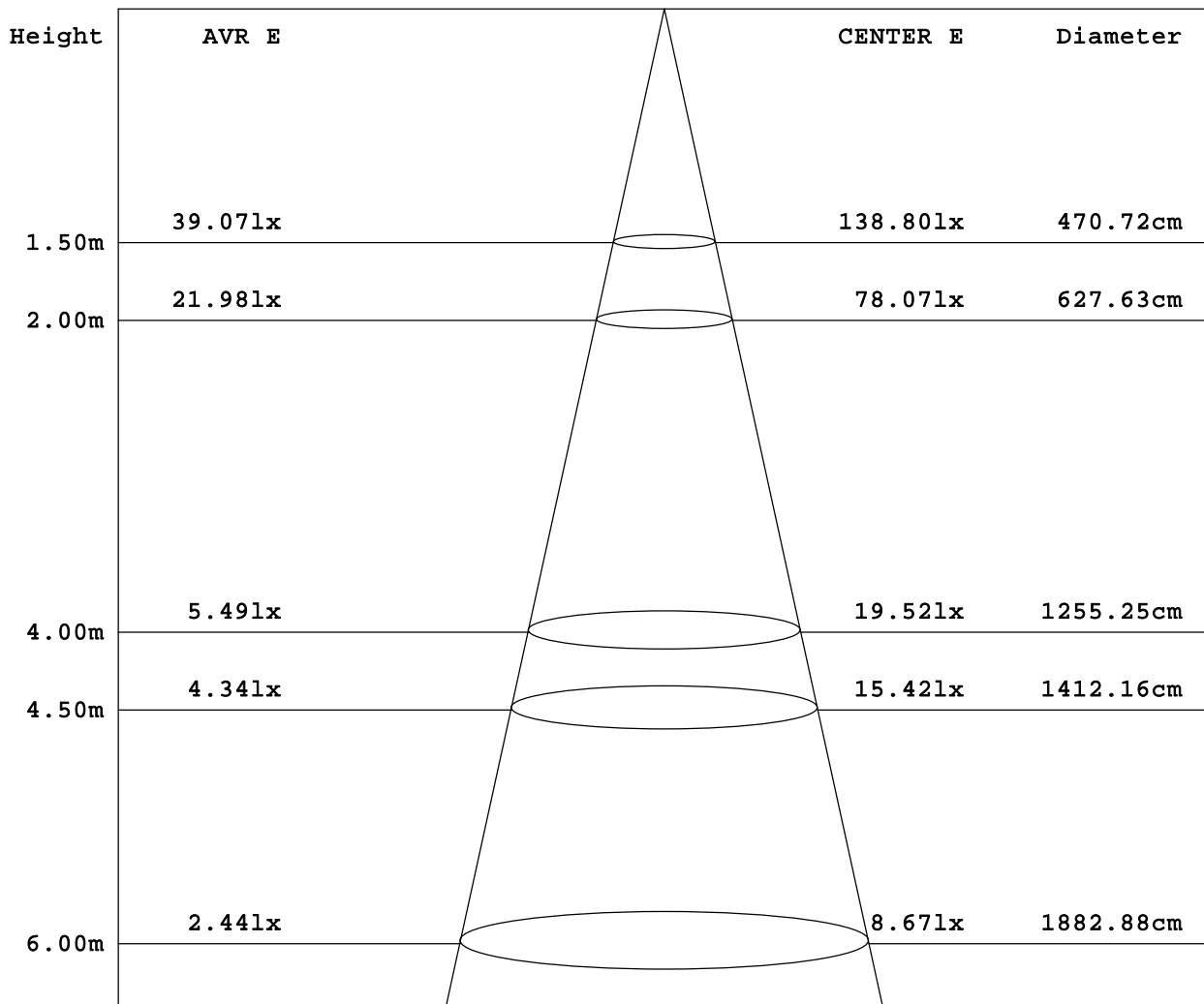
Test Set: 5.0deg/s C-Gamma (TYPE C)
 Humidity:65.0%
 Test Distance:10.000 m
 Remarks:

PHOTOMETRIC TEST REPORT

AVERAGE AND CENTER E Figure

Report number:

BRAND: BRAYTRON			
NAME: 15W SMD LED PANEL LIGHT	TYPE: SMD-CRD	WEIGHT:	
MODEL NO.: BP01-31510	DIMENSION:	SERIAL No.:	



Angle: 115.0deg

Test System: HOPOO HPG1900
 Temperature: 25.3DEG
 Operators:
 Test Date: 2017.08.14

Test Set: 5.0deg/s C-Gamma (TYPE C)
 Humidity: 65.0%
 Test Distance: 10.000 m
 Remarks:

PHOTOMETRIC TEST REPORT

ZONAL FLUX DIAGRAM

Report number:

BRAND: BRAYTRON			
NAME: 15W SMD LED PANEL LIGHT		TYPE:SMD-CRD	WEIGHT:
MODEL NO.:BP01-31510		DIMENSION:	SERIAL No.:

γ	C0	C180	γ	Φ zone	Φ total
5.0	312.7	309.1	0- 5	7	7
10.0	310.7	303.6	5- 10	22	30
15.0	305.8	295.3	10- 15	36	66
20.0	298.7	284.6	15- 20	49	114
25.0	288.8	271.9	20- 25	60	174
30.0	276.6	256.5	25- 30	69	244
35.0	262.5	238.8	30- 35	76	320
40.0	245.9	219.5	35- 40	81	400
45.0	227.0	197.8	40- 45	82	483
50.0	206.6	174.3	45- 50	81	564
55.0	184.0	149.8	50- 55	78	642
60.0	159.8	123.6	55- 60	71	713
65.0	134.5	96.69	60- 65	63	776
70.0	105.4	70.59	65- 70	52	828
75.0	29.49	34.09	70- 75	33	860
80.0	15.09	4.100	75- 80	9	869
85.0	9.099	0.500	80- 85	4	873
90.0	4.200	0	85- 90	2	875
95.0	1.600	0	90- 95	1	876
100.0	1.400	0	95-100	0	876
105.0	1.400	0	100-105	0	876
110.0	1.200	0.100	105-110	0	877
115.0	1.300	0.200	110-115	0	877
120.0	1.200	0.400	115-120	0	878
125.0	1.300	0.500	120-125	0	878
130.0	1.300	0.500	125-130	0	878
135.0	1.300	0.700	130-135	0	879
140.0	1.400	0.800	135-140	0	879
145.0	1.300	0.800	140-145	0	879
150.0	1.400	0.900	145-150	0	880
155.0	1.500	1.000	150-155	0	880
160.0	1.500	1.100	155-160	0	880
165.0	1.500	1.300	160-165	0	881
170.0	1.500	1.400	165-170	0	881
175.0	1.600	1.400	170-175	0	881
180.0	1.500	1.600	175-180	0	881
DEG	LUMINOUS INTENSITY:cd			UNIT:lm	

Test System:HOPOO HPG1900
 Temperature:25.3DEG
 Operators:
 Test Date:2017.08.14

Test Set: 5.0deg/s C-Gamma (TYPE C)
 Humidity:65.0%
 Test Distance:10.000 m
 Remarks:

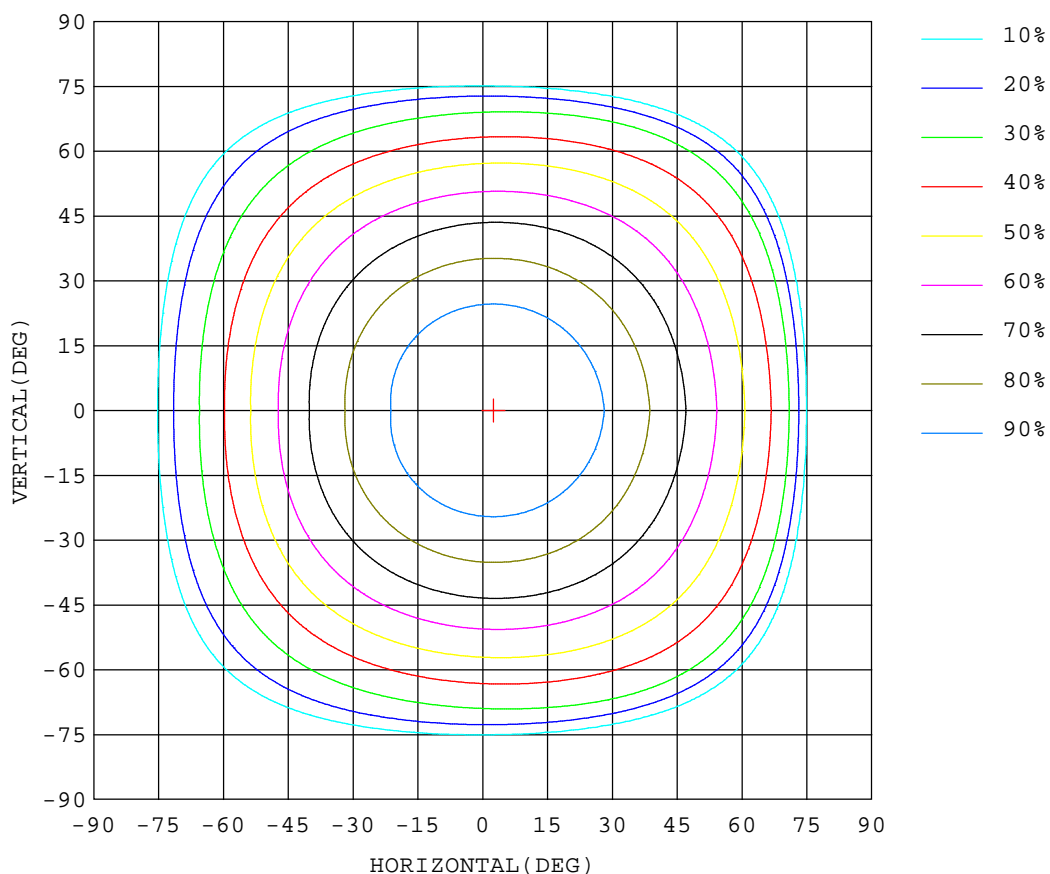
PHOTOMETRIC TEST REPORT

ISOCANDELA DIAGRAM

Report number:

BRAND: BRAYTRON			
NAME: 15W SMD LED PANEL LIGHT		TYPE: SMD-CRD	WEIGHT:
MODEL NO.: BP01-31510		DIMENSION:	SERIAL No.:

UNIT: cd



Test System: HOPOO HPG1900
 Temperature: 25.3 DEG
 Operators:
 Test Date: 2017.08.14

Test Set: 5.0 deg/s C-Gamma (TYPE C)
 Humidity: 65.0%
 Test Distance: 10.000 m
 Remarks:

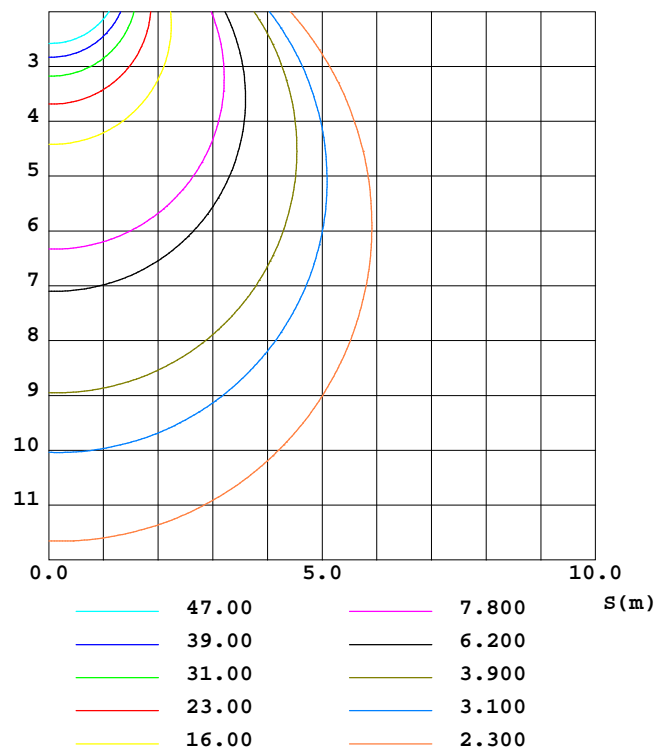
PHOTOMETRIC TEST REPORT

ISOLUX DIAGRAM

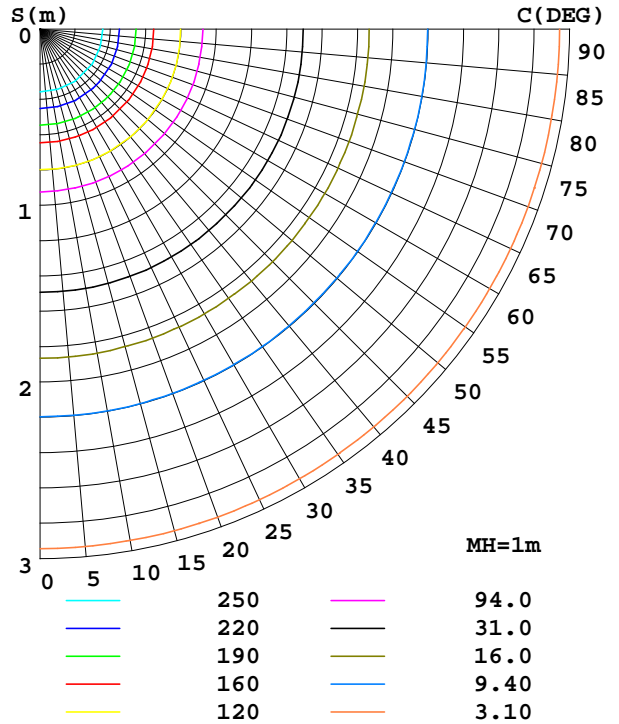
Report number:

BRAND: BRAYTRON		
NAME: 15W SMD LED PANEL LIGHT	TYPE: SMD-CRD	WEIGHT:
MODEL NO.: BP01-31510	DIMENSION:	SERIAL No.:

C0 PLANE ISOLUX DIAGRAM (UNIT:lx)



PLANAR ISOLUX DIAGRAM(UNIT:lx)



Test System: HOPOO HPG1900
 Temperature: 25.3DEG
 Operators:
 Test Date: 2017.08.14

Test Set: 5.0deg/s C-Gamma (TYPE C)
 Humidity: 65.0%
 Test Distance: 10.000 m
 Remarks:

PHOTOMETRIC TEST REPORT

LUMINOUS DISTRIBUTION INTENSITY DATA

Report number:

BRAND: BRAYTRON		
NAME: 15W SMD LED PANEL LIGHT	TYPE: SMD-CRD	WEIGHT:
MODEL NO.: BP01-31510	DIMENSION:	SERIAL No.:

UNIT: cd

C (DEG) γ (DEG)	0	180
0.0	312	312
5.0	313	309
10.0	311	304
15.0	306	295
20.0	299	285
25.0	289	272
30.0	277	257
35.0	263	239
40.0	246	220
45.0	227	198
50.0	207	174
55.0	184	150
60.0	160	124
65.0	135	96.6
70.0	105	70.5
75.0	29.4	34.0
80.0	15.0	4.10
85.0	9.09	0.50
90.0	4.20	0.00
95.0	1.60	0.00
100.0	1.40	0.00
105.0	1.40	0.00
110.0	1.20	0.10
115.0	1.30	0.20
120.0	1.20	0.40
125.0	1.30	0.50
130.0	1.30	0.50
135.0	1.30	0.70
140.0	1.40	0.80
145.0	1.30	0.80
150.0	1.40	0.90
155.0	1.50	1.00
160.0	1.50	1.10
165.0	1.50	1.30
170.0	1.50	1.40
175.0	1.60	1.40
180.0	1.50	1.60

Test System: HOPOO HPG1900
 Temperature: 25.3DEG
 Operators:
 Test Date: 2017.08.14

Test Set: 5.0deg/s C-Gamma (TYPE C)
 Humidity: 65.0%
 Test Distance: 10.000 m
 Remarks: