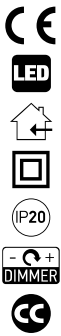


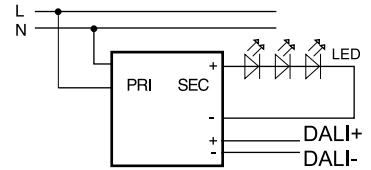
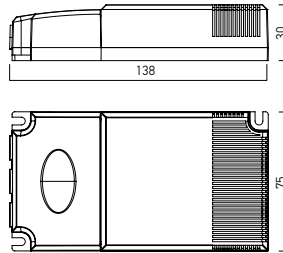
# ATC/ATL



**CONSTANT CURRENT DIMMABLE DRIVERS**  
**ALIMENTATOARE ÎN CURENTE CONSTANT DIMABILE**  
**ALIMENTATORI DIMMERABILI IN CORRENTE COSTANTE**

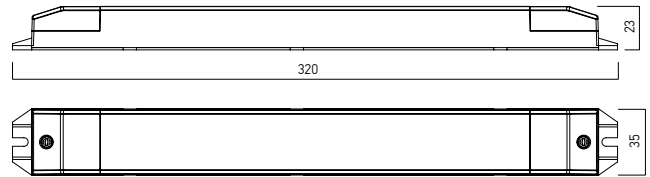
**3 YEARS WARRANTY**

**28/40W**



Code	Input voltage	Input frequency	Output power	Output voltage	Output current	Operating ambient temperature	Weight
<b>ATC350.28.500.700.400</b>	220-240V AC	50/60Hz	28W	10-70V	350 mA	-20 ÷ +50°	0.18 kg
	220-240V AC	50/60Hz	40W	10-70V/500 mA 10-60V/700 mA	500/700 mA	-20 ÷ +50°	0.18 kg
<b>ATC1050.1400.1600.400</b>	220-240V AC	50/60Hz	40W	2-38V/1050mA 2-29V/1400 mA -2-25V/1600 mA	1050/1400/1600 mA	-20 ÷ +50°	0.18 kg

**28/40W**



Code	Input voltage	Input frequency	Output power	Output voltage	Output current	Operating ambient temperature	Weight
<b>ATL350.28.500.700.400</b>	220-240V AC	50/60Hz	28W	10-70V	350 mA	-20 ÷ +50°	0.16 kg
	220-240V AC	50/60Hz	40W	10-70V/500 mA 10-60V/700mA	500/700 mA	-20 ÷ +50°	0.16 kg

**EN**

Series of 1-10V dimming drivers in constant current. White polycarbonate case. Short-circuit and over load protection, auto-recovery if the fault is removed. Over temperature protection. No load protection. Screws terminal block, for 0,75 to 2,5 mm<sup>2</sup> diameter of wires.

**RO**

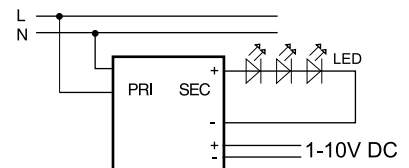
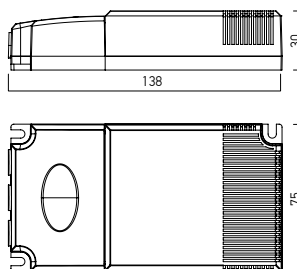
*Serie de alimentatoare dimabile în curent constant, varianta 1-10V. Carcasă din policarbonat de culoare albă. Protecții la scurtcircuit și suprasarcină, cu repornire automată la îndepărtarea defectului. Protecție la supraîncălzire. Protecție la întreruperea circuitului de alimentare a sarcinii. Șir de conectori cu șurub, pentru diametre ale firelor de conexiune de la 0,75 la 2,5 mm<sup>2</sup>.*

**IT**

Serie di alimentatori dimmerabili a corrente costante, versione 1-10V. Carcasa in policarbonato bianco. Protezione cortocircuito e sovraccarico, con riavvio automatico alla scomparsa del guasto. Protezione contro il surriscaldamento. Protezione in caso di interruzione del circuito di alimentazione. Serie di connettori con viti, per diametri cavi di alimentazione 0,75-2,5 mm<sup>2</sup>.

**40W**

**1-10V**



Code	Input voltage	Input frequency	Output power	Output voltage	Output current	Operating ambient temperature	Weight
<b>ATC1050.40V</b>	220-240V AC	50/60Hz	40W	12-38V	1050 mA	-20 ÷ +50°	0.21 kg