

QK01/02/03/04/05/06

Standards: EN 60598-1:2015, EN 60598-2-1:1989, EN 62493:2015, EN 62471:2008, EN 62031:2008 + A2:2015, EN 60529:1992 + A2:2013, EN 55015:2013, EN 61000-3-2:2014, EN 61000-3-3:2013, EN 61547:2009



QK01/02



QK05/06



QK03/04

RO

Corpuri de iluminat cu grad ridicat de protecție la praf și umiditate, montaj aparent pe perete sau tavan, echipate cu LED-uri SMD SAN'AN.

CORP

Pentru versiunile rotundă și ovală carcusele și elementele de fixare sunt din policarbonat extrudat, stabilizat UV, cu autostingere, de culoare albă. Pentru versiunea pătrată carcasa este din policarbonat alb, iar elementul de fixare este din tablă de oțel.

SISTEM OPTIC

Dispensur opal din polipropilenă.

APARATAJ DE ALIMENTARE

Alimentator în curent constant livrat împreună cu corpul de iluminat.

APLICAȚII

Iluminatul general de interior și exterior. Marcarea zonelor de acces.

GB

Dustproof and waterproof light fittings, on the wall or on the ceiling surface mounting, equipped with SAN'AN SMD LEDs.

HOUSING

For the round and oval versions housings and fixing clamps of extruded polycarbonate, UV stabilized, self-extinguishing, in white color. For the square version, the housing is in white polycarbonate and the fixing element of steel board.

OPTICAL SYSTEM

Diffuser of opal polypropylene.

ELECTRIC GEAR

Constant current LED driver delivered with the light fitting.

RANGE OF APPLICATIONS

General interior and exterior lighting. Marking of the access areas.

IT

Apparecchi stagni, montaggio a parete o a soffitto, equipaggiati con LED SMD SAN'AN.

CORPO

Per i versioni tonde e ovali carcasse e staffe di montaggio in policarbonato estruso, stabilizzato ai raggi UV e autoestinguente, colore bianco. Per la versione quadrata carcassa in policarbonato bianco e staffa di fissaggio in lamiera di acciaio.

SISTEMA OTTICO

Diffusore in polipropilene opalino.

ALIMENTAZIONE

Alimentatore in corrente costante fornito con l'apparecchio.

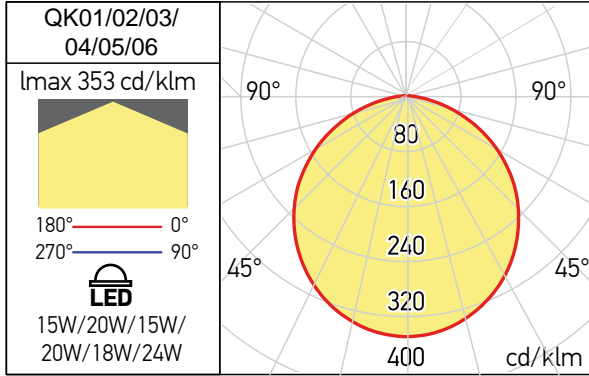
CAMPI DI APPLICAZIONE

Illuminazione generale per interni ed esterni. Marcatura aree di accesso.

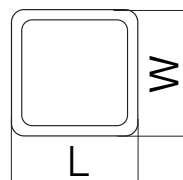
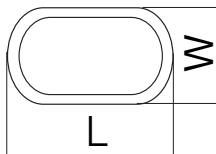
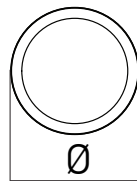
QK01/02/03/04/05/06

Standards: EN 60598-1:2015, EN 60598-2-1:1989, EN 62493:2015, EN 62471:2008, EN 62031:2008 + A2:2015, EN 60529:1992 + A2:2013, EN 55015:2013, EN 61000-3-2:2014, EN 61000-3-3:2013, EN 61547:2009

FOTOMETRIE | PHOTOMETRY | FOTOMETRIA



Code	Finishing	LED type	Input voltage	Power	Driver	Luminous flux LED	Luminous flux system	LED color temperature	CRI	Weight (kg)
QK01WW	MW	SMD 2835	170-265V AC	15W	Included	1800lm	1408lm	3000K	80	0,19
QK01NW	MW	SMD 2835	170-265V AC	15W	Included	1920lm	1493lm	4000K	80	0,19
QK02WW	MW	SMD 2835	170-265V AC	20W	Included	2400lm	1874lm	3000K	80	0,30
QK02NW	MW	SMD 2835	170-265V AC	20W	Included	2560lm	1997lm	4000K	80	0,30
QK03WW	MW	SMD 2835	100-265V AC	15W	Included	1800lm	1402lm	3000K	80	0,20
QK03NW	MW	SMD 2835	100-265V AC	15W	Included	1920lm	1491lm	4000K	80	0,20
QK04WW	MW	SMD 2835	100-265V AC	20W	Included	2400lm	1871lm	3000K	80	0,28
QK04NW	MW	SMD 2835	100-265V AC	20W	Included	2560lm	1993lm	4000K	80	0,28
QK05WW	MW	SMD 2835	100-265V AC	18W	Included	2400lm	1808lm	3000K	80	0,25
QK05NW	MW	SMD 2835	100-265V AC	18W	Included	2560lm	1910lm	4000K	80	0,25
QK06NW	MW	SMD 2835	100-265V AC	24W	Included	3600lm	2378lm	3000K	80	0,42
QK06WW	MW	SMD 2835	100-265V AC	24W	Included	3840lm	2518lm	4000K	80	0,42



Code	Dimensions ØxH (mm) / LxWxH (mm)
QK01WW	Ø162x65
QK01NW	Ø162x65
QK02WW	Ø218x73
QK02NW	Ø218x73
QK03WW	214x112x69
QK03NW	214x112x69
QK04WW	270x143x78
QK04NW	270x143x78
QK05WW	165x165x65
QK05NW	165x165x65
QK06WW	220x220x65
QK06NW	220x220x65