

Wall Bracket

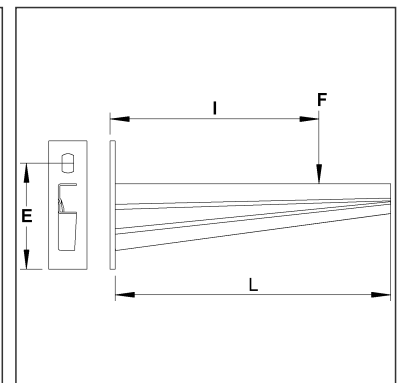
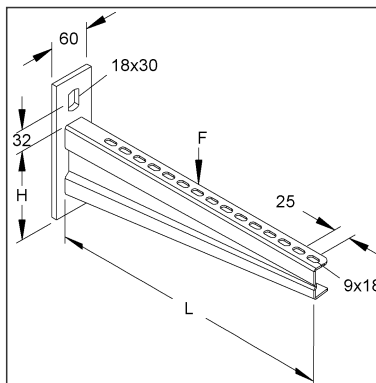
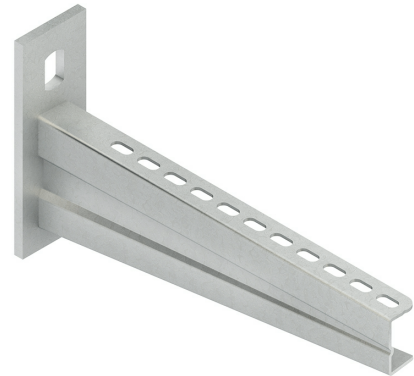
heavy duty design

KTASS 300

EAN Code: 4013339189229

Smallest packaging unit: 1 pc.

the photorealistic images are to be considered as reference images



$$F = \sqrt{\frac{R^2}{1 + (I/E)^2}}$$

Article Description

Wall bracket, heavy duty, 108x330 mm, 10,0 kN, steel, hot dip galvanised DIN EN ISO 1461

Technical Datasheet

Supporting structure

KTASS 300

the photorealistic images are to be considered as reference images

Excl. Accessories

exclusive bolting	Please order the necessary fastening accessories separately for F: for cable trays: FLM 6X12 F for cable ladders: KLTB 6 F, UGM 6 F for wide span cable ladders: WSTB 2 for wide span cable trays: FLM 8X16 F
-------------------	---

Additional Price Information

Article group	N13
quantity unit	pcs.

Weight

Weight per quantity unit	1,506 kg/ pcs.
Weight in kg per 100	151 kg/ 100pcs.

Physical Article Dimensions

Height	175.00 mm
Width	60.00 mm
Depth/length	338 mm

Packing Dimension

1 piece = 1 piece		✓ VP1-smallest packaging unit (PU)			
Lenght	338 mm	Width	60.00 mm	Height	175.00 mm
Gross weight	1,51 kg	Volume	0,004 m³		
Min. quantity	1.00 pcs.	Max. Quantity	1.00 pcs.		
350 pieces = 1					
Lenght	1230 mm	Width	840 mm	Height	970 mm
Gross weight	597 kg	Volume	1,002 m³		
Min. Quantity	350.00 pcs.	Max. Quantity	350.00 pcs.		

Tender Text

Wall bracket, very heavy duty, for wall mounting, please order the required fastening accessories for cable trays/ladders and wide span cable trays/ladders separately. The load-bearing capacity data are only valid if the anchor is sufficiently anchored to the load-bearing substrate (min. concrete C20/25) and the anchor DAZ 16x25 is used in uncracked concrete, taking into account the approval certificate ETA-18/0542. In any case, the introduction of loads into the structure must be agreed with the construction planning or site management.

Dimensions (approx. dimensions)

Support height H : 108 mm

Support length L : 330 mm

Load capacity F at L/2 : 10 kN tested in the system, applies to the bracket independently of the anchoring.

Load capacity F2 at L/2 : 10 kN tested in the system, applies to central load introduction and in connection with dowel DAZ 16x25. In case of different load

Technical Datasheet

Supporting structure

KTASS 300

the photorealistic images are to be considered as reference images

Tender Text

introduction (asymmetrical load introduction) a formula for calculating the load capacity is to be used - please contact us if required.
Material bracket : Steel, hot-dip galvanised acc. to DIN EN ISO 1461
NIEDAX Model No. : KTASS 300
EP Material_____ EP Wage_____
Unit price/piece

Safety & Environment

REACH Date	25.06.2025
REACH Info	Conformable
RoHS Info	Conformable

Origin & International Trade

Country of origin	DE
Federal State of Origin	RP
Customs tariff number	73089059