

### Central Suspension

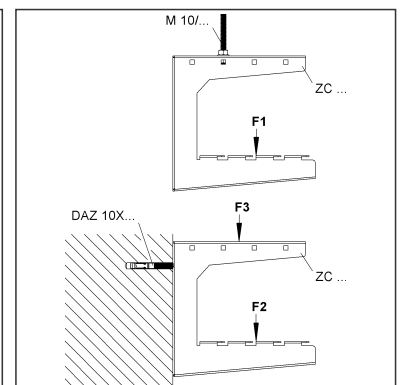
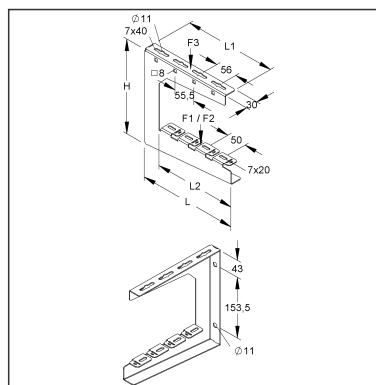
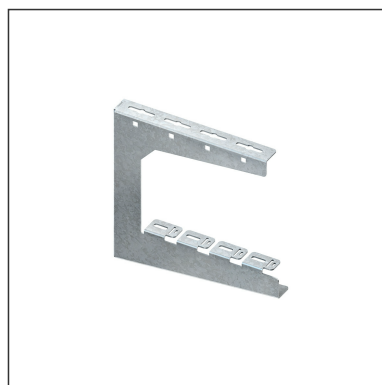
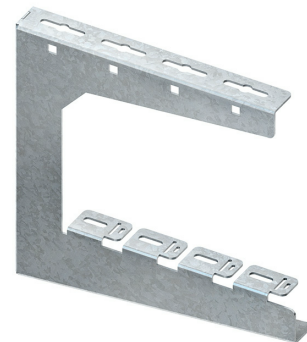
C-shaped

**ZC 300 S**

EAN Code: 4013339192090

Smallest packaging unit: 10 pcs.

the photorealistic images are to be considered as reference images



### Article Description

Central suspension, C-profile, 308x310mm, 0,5 kN, steel, pre-galvanised according to DIN EN 10346

### Additional Price Information

Article group	N13
quantity unit	pcs.

### Weight

Weight per quantity unit	1,145 kg / pcs.
Weight in kg per 100	114 kg / 100pcs.

### Physical Article Dimensions

Height	280 mm
Width	365 mm
Depth/length	30.00 mm

# Technical Datasheet

## Supporting structure

ZC 300 S

the photorealistic images are to be considered as reference images

### Packing Dimension

<b>10 pieces = 1 carton</b>		✓ VP1-smallest packaging unit ( PU)		✓ VP1-preferred PU	
Lenght	480 mm	Width	280 mm	Height	140.00 mm
Gross weight	12 kg	Volume	0,019 m³		
Min. quantity	10.00 pcs.	Max. Quantity	10.00 pcs.		

<b>120 pieces = 1</b>					
Lenght	750 mm	Width	750 mm	Height	730 mm
Gross weight	177 kg	Volume	0,411 m³		
Min. Quantity	120.00 pcs.	Max. Quantity	120.00 pcs.		

### Tender Text

Central suspension, C-shaped, bracket for ceiling mounting by means of threaded rod M 10/... as well as for wall mounting. The load-bearing capacity specifications are only valid with sufficient anchoring to the load-bearing substrate.

Can be used for : Wire mesh trays with a wire Ø 3.9 - 6 mm and a central longitudinal wire spacing of 50 mm as well as for cable trays

Dimensions (approx. dimensions)

Height H (outer dimension) : 280 mm

Width B (outer dimension) : 30 mm

Length L (outer dimension) : 365 mm

Material thickness t : 2 mm

Upper support length L1 : 308 mm

Slotted fixing holes of the upper support surface : 7 x 40 mm and Ø 11 mm

central spacing of the slotted fixing holes : 56 mm

vertical square perforation : 8 mm

central spacing of the square perforation : 55.5 mm

lower support length L2 : 310 mm

Fixing slotted perforation of the lower support surface : 7 x 20 mm

Accommodation of Wire mesh trays with a longitudinal wire spacing : 50 mm and a wire Ø 3.9 - 6 mm

Ceiling suspension by means of threaded rod M 10/...

Load capacity F1 at L2/2 : 0.5 kN

Wall fixing by means of push-through anchor DAZ 10X... Load capacity F2 at L2/2 : 1.5 kN

Wall fixing by means of push-through anchor DAZ 10X... Load capacity F3 at L1/2 : 1.5 kN

Material : Steel, pre-galvanised according to DIN EN 10346

NIEDAX Model no. : ZC 300 S

EP Material\_\_\_\_\_ EP Wage\_\_\_\_\_

Unit price/piece

### Safety & Environment

REACH Date	25.06.2025
REACH Info	Conformable
RoHS Info	Conformable

Technical Datasheet  
Supporting structure

ZC 300 S

the photorealistic images are to be considered as reference images

Origin & International Trade	
Country of origin	DE
Customs tariff number	73089059