

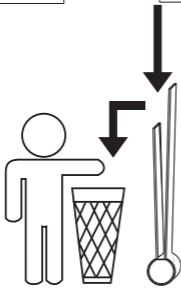


LOVATO ELECTRIC S.P.A.
24020 GORLE (BERGAMO) ITALIA
VIA DON E. MAZZA, 12
TEL. 035 4282111
E-mail info@LovatoElectric.com
Web www.LovatoElectric.com

- I CONTACTI TEMPORIZZATI
 - GB TIME DELAY CONTACT BLOCKS
 - D PNEUMATISCH HILFSKONTAKTE
 - F CONTACTS TEMPORISES
 - E CONTACTOS TEMPORIZADOS
- G485 - G486 - G487**



G485...
G486...
G487



ATTENZIONE
Solo per G485...

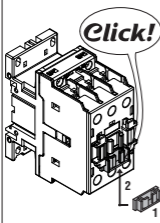
WARNING
G485... only

ACHTUNG
Nur für G485...

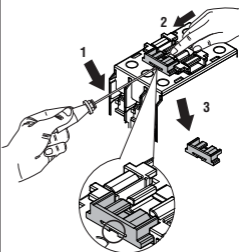
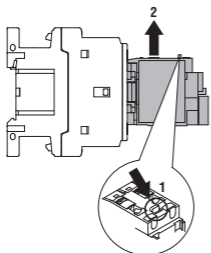
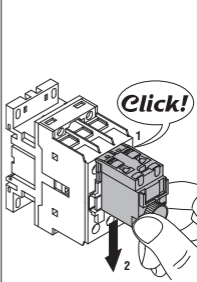
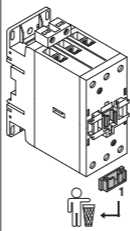
ATTENTION
Seulement G485...

ATENCIÓN
Sólo para G485...

BF00, BF09...BF38
BF50...BF110



BF40...BF150

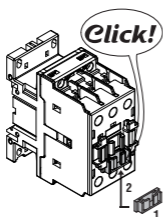




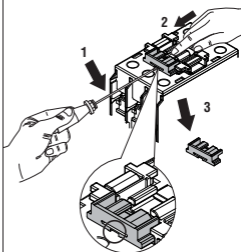
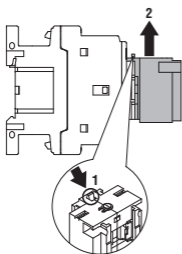
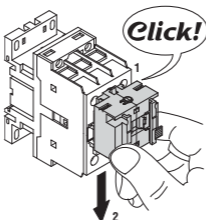
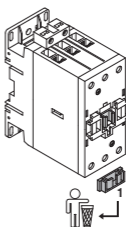
- (I) AUTORITENUTA MECCANICA
 (GB) MECHANICAL LATCH
 (D) MECHANISCHE VERKLINKUNG
 (F) ACCROCHAGE MECANIQUE
 (E) AUTORETENCIÓN MECÁNICA
G222 - G272 - BFX641



BF00, BF09...BF38 + G222



BF40...BF94 + G272
BF95...BF150 + BFX641



ATTENZIONE!!

Questo apparecchio deve essere installato da personale qualificato, nel rispetto delle vigenti normative impiantistiche allo scopo di evitare danni a persone o cose.

Per gli esatti limiti d'impiego consultare il catalogo.

WARNING!!

This equipment must be installed by qualified personnel, to prevent damages or safety hazards.

Refer to our catalogue for the correct operational limits.

ACHTUNG!!

Um Personen- und Sachschaden zu vermeiden darf dieses Gerät nur von fachkundigen Personal, unter Berücksichtigung der jeweils geltenden Vorschriften, installiert werden. Für der Arbeitsbereich-Werte bitte in Katalog nachschauen.

ATENCIÓN!!

Estos aparatos deben ser instalados por personal adecuadamente cualificado según la normativa vigente a fin de evitar daños personales y materiales.

Para información de los límites exactos de empleo consulte el catálogo.