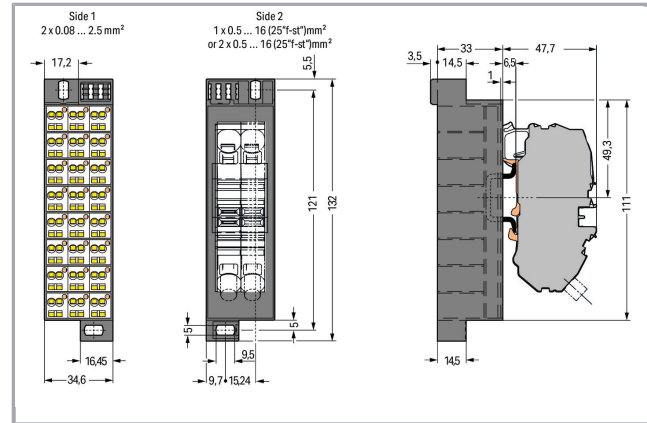
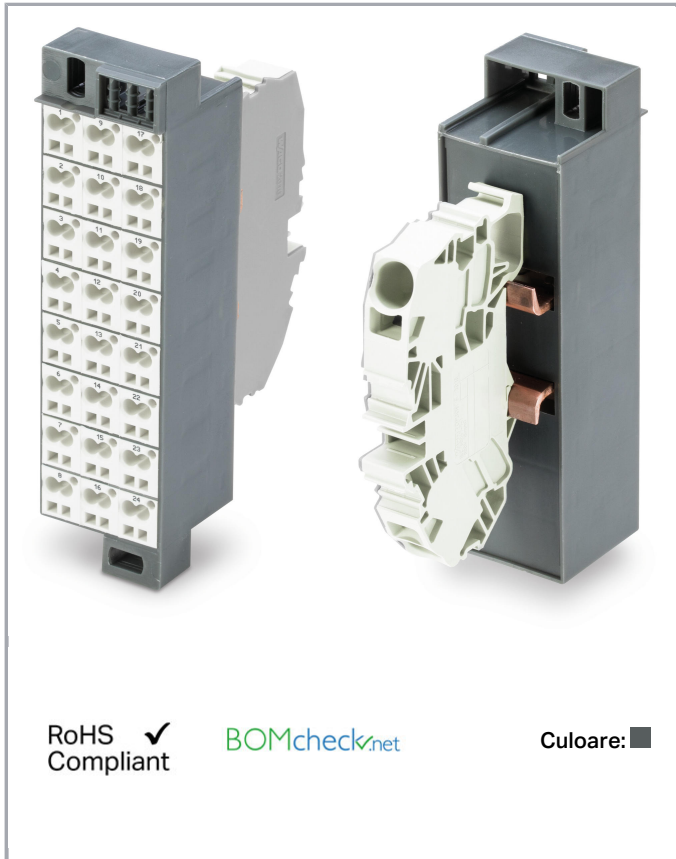


## Fișă tehnică | Număr articol: 726-611

Common potential matrix patchboard; Marking 1-24; with 1 input module incl. end plate; Color of modules: white; Numbering of modules arranged vertically; for 19" racks; Slimline version; 2,50 mm<sup>2</sup>; dark gray



[www.wago.com/726-611](http://www.wago.com/726-611)



### Date

### Electrical data

### Ratings per IEC/EN 60664-1

|                 |      |
|-----------------|------|
| Rated current   | 24 A |
| Rated current 2 | 76 A |

### Connection data

|   |             |
|---|-------------|
| Connection type (1)                           | Side 1      |
| Connection technology                         | CAGE CLAMP® |
| Number of connection points (connection type) | 2           |

Supus modificărilor.

WAGO Kontakttechnik GmbH & Co. KG  
/Representative Office Romania  
Sos. Pipera-Tunari nr. 1/1  
building 1, 2nd floor | 077190 Voluntari, Ilfov  
Tel.: +40-(0)31 421 85 68 | Email: info-RO@wago.com

Aveți întrebări despre produsele noastre?  
Vă stăm la dispoziție pentru preluarea apelului la +40 (0) 31 421 85 68.



|                                 |  |
|---------------------------------|--|
| Actuation type                  | Operating tool                               |
| Connectable conductor materials | Copper                                       |
| Solid conductor                 | 0.08 ... 2.5 mm <sup>2</sup> / 28 ... 14 AWG |
| Fine-stranded conductor         | 0.08 ... 2.5 mm <sup>2</sup> / 28 ... 14 AWG |
| Strip length                    | 8 ... 10 mm / 0.31 ... 0.39 inch             |
| Connection type 2               | Side 2                                       |
| Number of connection points     | 1  |
| Solid conductor 2               | 0.2 ... 16 mm <sup>2</sup> / 24 ... 6 AWG    |
| Fine-stranded conductor 2       | 0.2 ... 16 mm <sup>2</sup> / 24 ... 6 AWG    |
| Strip length 2                  | 16 ... 17 mm / 0.63 ... 0.67 inch            |
| Wiring type                     | Front-entry wiring                           |

### Geometrical Data

|        |                      |
|--------|----------------------|
| Width  | 34.6 mm / 1.362 inch |
| Height | 132 mm / 5.197 inch  |
| Depth  | 80.7 mm / 3.177 inch |

### Mechanical data

|         |          |
|---------|----------|
| Design  | slimline |
| Marking | 1 ... 24 |

### Material Data

|              |           |
|--------------|-----------|
| Color        | dark gray |
| Module color | white     |
| Weight       | 203,7 g   |

### Commercial data

|                       |               |
|-----------------------|---------------|
| Packaging type        | BOX           |
| Country of origin     | DE            |
| GTIN                  | 4055143628686 |
| Customs tariff number | 85369010000   |

### Aprobări / certificate

#### Country specific Approvals

| Emblemă | Aprobare | Text de aprobare suplimentar | Nume certificat |
|---------|----------|------------------------------|-----------------|
|         | CCA      | EN 60998                     | NTR NL-         |

Supus modificărilor.

WAGO Kontakttechnik GmbH & Co. KG  
 /Representative Office Romania  
 Sos. Pipera-Tunari nr. 1/1  
 building 1, 2nd floor | 077190 Voluntari, Ilfov  
 Tel.: +40-(0)31 421 85 68 | Email: info-RO@wago.com

Aveți întrebări despre produsele noastre?  
 Vă stăm la dispoziție pentru preluarea apelului la +40 (0) 31 421 85 68.



DEKRA Certification B.V.

7623

CSA  
DEKRA Certification B.V.

C22.2 No. 158

1101143

KEMA/KEUR  
DEKRA Certification B.V.

EN 60998

71-  
100850

## UL-Approvals

Emblemă

Aprobare

Text de aprobare suplimentar

Nume  
certificatUL  
UL International Germany GmbH

UL 1059

E45172

## Counterpart

## Produse compatibile

## General accessories

Nr. articol: 726-902  
Adaptor; dark gray[www.wago.com/726-902](http://www.wago.com/726-902)

## check

Nr. articol: 210-137  
Test plug; 2.3 mm Ø; with 500 mm cable; yellow[www.wago.com/210-137](http://www.wago.com/210-137)

## Marking accessories

Nr. articol: 2009-110  
Marking strips; on reel; not stretchable; plain; snap-on type; white[www.wago.com/2009-110](http://www.wago.com/2009-110)Nr. articol: 2009-115  
WMB-Inline; for Smart Printer; 1500 pieces on roll; stretchable 5 - 5.2 mm; plain; snap-on type; white[www.wago.com/2009-115](http://www.wago.com/2009-115)

Supus modificărilor.

WAGO Kontakttechnik GmbH & Co. KG  
/Representative Office Romania  
Sos. Pipera-Tunari nr. 1/1  
building 1, 2nd floor | 077190 Voluntari, Ilfov  
Tel.: +40-(0)31 421 85 68 | Email: [info-RO@wago.com](mailto:info-RO@wago.com)

Aveți întrebări despre produsele noastre?  
Vă stăm la dispoziție pentru preluarea apelului la +40 (0) 31 421 85 68.



**Nr. articol: 209-185**  
Adaptor; gray

[www.wago.com/209-185](http://www.wago.com/209-185)



**Nr. articol: 210-612**  
Marking strips; for self-marking; plain; Self-adhesive; transparent

[www.wago.com/210-612](http://www.wago.com/210-612)



**Nr. articol: 726-905**  
Adaptor; dark gray

[www.wago.com/726-905](http://www.wago.com/726-905)



**Nr. articol: 793-5501**  
WMB marking card; as card; for terminal block width 5 - 17.5 mm; stretchable 5 - 5.2 mm; plain; snap-on type; white

[www.wago.com/793-5501](http://www.wago.com/793-5501)



**Nr. articol: 793-5501/000-002**  
WMB marking card; as card; for terminal block width 5 - 17.5 mm; stretchable 5 - 5.2 mm; plain; snap-on type; yellow

[www.wago.com/793-5501/000-002](http://www.wago.com/793-5501/000-002)



**Nr. articol: 793-5501/000-005**  
WMB marking card; as card; for terminal block width 5 - 17.5 mm; stretchable 5 - 5.2 mm; plain; snap-on type; red

[www.wago.com/793-5501/000-005](http://www.wago.com/793-5501/000-005)



**Nr. articol: 793-5501/000-006**  
WMB marking card; as card; for terminal block width 5 - 17.5 mm; stretchable 5 - 5.2 mm; plain; snap-on type; blue

[www.wago.com/793-5501/000-006](http://www.wago.com/793-5501/000-006)



**Nr. articol: 793-5501/000-007**  
WMB marking card; as card; for terminal block width 5 - 17.5 mm; stretchable 5 - 5.2 mm; plain; snap-on type; gray

[www.wago.com/793-5501/000-007](http://www.wago.com/793-5501/000-007)



**Nr. articol: 793-5501/000-012**  
WMB marking card; as card; for terminal block width 5 - 17.5 mm; stretchable 5 - 5.2 mm; plain; snap-on type; orange

[www.wago.com/793-5501/000-012](http://www.wago.com/793-5501/000-012)



**Nr. articol: 793-5501/000-014**  
WMB marking card; as card; for terminal block width 5 - 17.5 mm; stretchable 5 - 5.2 mm; plain; snap-on type; brown

[www.wago.com/793-5501/000-014](http://www.wago.com/793-5501/000-014)



**Nr. articol: 793-5501/000-017**  
WMB marking card; as card; for terminal block width 5 - 17.5 mm; stretchable 5 - 5.2 mm; plain; snap-on type; green

[www.wago.com/793-5501/000-017](http://www.wago.com/793-5501/000-017)



**Nr. articol: 793-5501/000-023**  
WMB marking card; as card; for terminal block width 5 - 17.5 mm; stretchable 5 - 5.2 mm; plain; snap-on type; light green

[www.wago.com/793-5501/000-023](http://www.wago.com/793-5501/000-023)



**Nr. articol: 793-5501/000-024**  
WMB marking card; as card; for terminal block width 5 - 17.5 mm; stretchable 5 - 5.2 mm; plain; snap-on type; violet

[www.wago.com/793-5501/000-024](http://www.wago.com/793-5501/000-024)

## Jumper



**Nr. articol: 709-107**  
Wire commoning chain; insulated; 32 connections; gray

[www.wago.com/709-107](http://www.wago.com/709-107)

Supus modificărilor.

## Descărcări Documentation

### Additional Information

Technical explanations

Apr 3, 2019

pdf  
2,1 MB

[Descărcare](#)

## CAD/CAE-Data

### CAE data

EPLAN Data Portal 726-611

[URL](#)

[Descărcare](#)

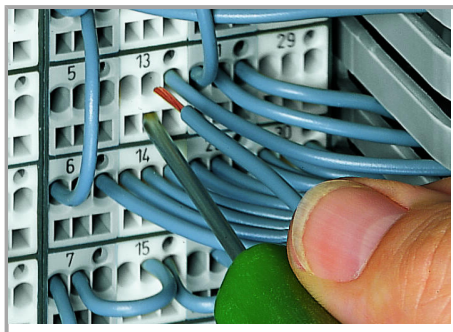
WSCAD Universe 726-611

[URL](#)

[Descărcare](#)

## Installation Notes

### Inserting a conductor

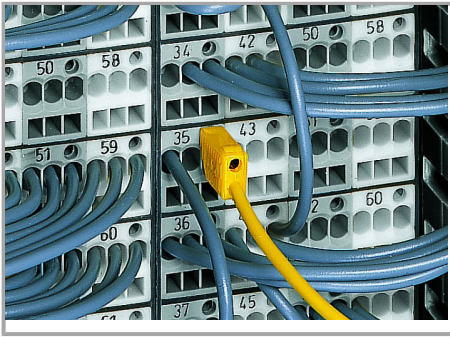


### CAGE CLAMP® connection

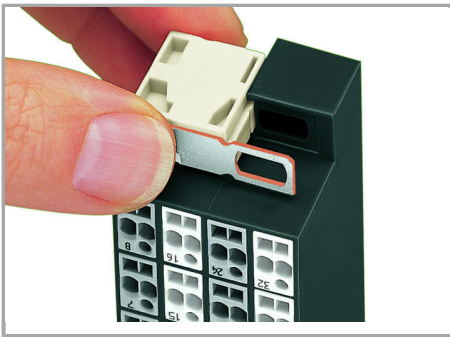
Inserting a conductor via 210-719 Operating Tool (2.5 x 0.4 mm blade).

### Testing

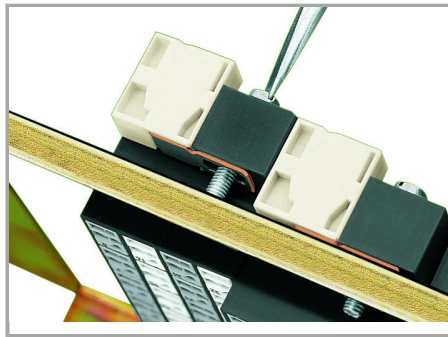
Supus modificărilor.



Testing with a 2.3 mm Ø test plug (210-137).

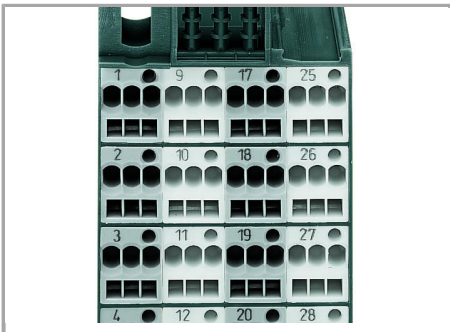


Snapping on an additional module with contact to mounting frame.

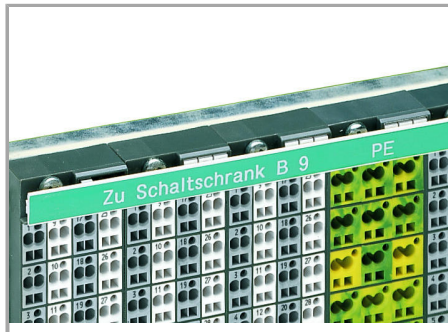


Assembling a matrix patchboard with additional module – direct connection to the mounting frame.

### Marking



Factory-marked modules



WFB continuous marking strip – fits into the matrix patchboards' marker slot and group marker carrier.



Individual group marking via WSB Quick Marking System.

Side 1: 1, 2, 3, 4 ...

Supus modificărilor.