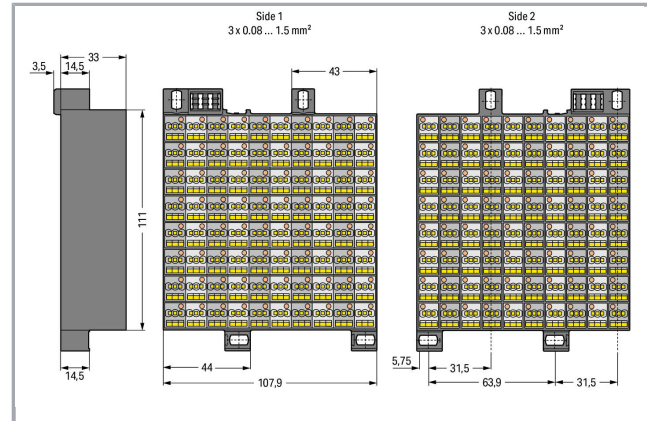
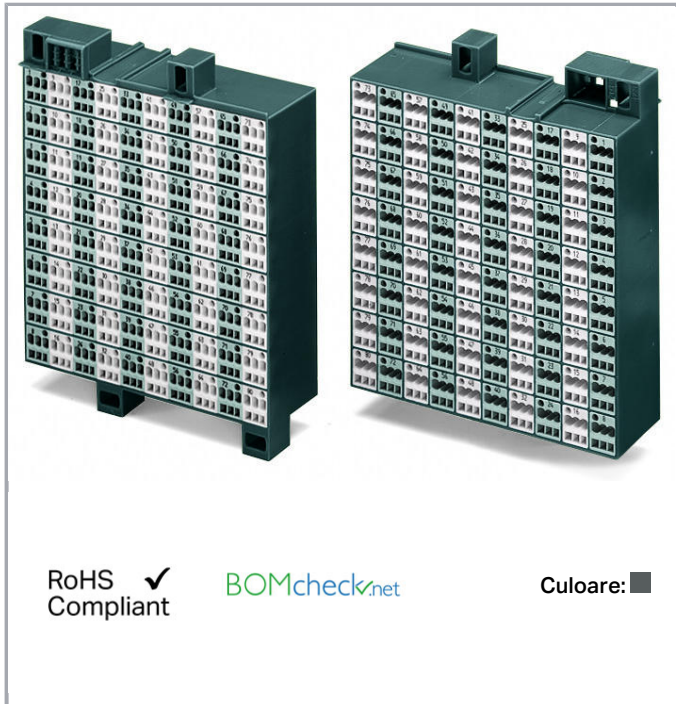


## Fișă tehnică | Număr articol: 726-721

Matrix patchboard; 80-pole; Marking 1-80; Colors of modules: gray/white;  
Module marking, side 1 and 2 vertical; 1,50 mm<sup>2</sup>; dark gray



[www.wago.com/726-721](http://www.wago.com/726-721)



### Date

### Electrical data

### Ratings per IEC/EN 60664-1

Nominal voltage (III/3)	500 V
Rated surge voltage (III/3)	6 kV
Rated current	10 A
Legend (ratings)	(III / 3) ≙ Overvoltage category III / Pollution degree 3

### Connection data

Connection type (1)	Side 1
Connection technology	CAGE CLAMP®
Number of connection points (connection type)	3
Actuation type	Operating tool
Connectable conductor materials	Copper

Supus modificărilor.

WAGO Kontakttechnik GmbH & Co. KG  
/Representative Office Romania  
Sos. Pipera-Tunari nr. 1/1  
building 1, 2nd floor | 077190 Voluntari, Ilfov  
Tel.: +40-(0)31 421 85 68 | Email: info-RO@wago.com

Aveți întrebări despre produsele noastre?  
Vă stăm la dispoziție pentru preluarea apelului la +40 (0) 31 421 85 68.



Solid conductor	0.08 ... 1.5 mm <sup>2</sup> / 28 ... 16 AWG
Fine-stranded conductor	0.08 ... 1.5 mm <sup>2</sup> / 28 ... 16 AWG
Strip length	8 ... 10 mm / 0.31 ... 0.39 inch
Pole No.	80
Connection type 2	Side 2
Number of connection points	3
Wiring type	Front-entry wiring

**Geometrical Data**

Width	107.9 mm / 4.248 inch
Height	132 mm / 5.197 inch
Depth	36.5 mm / 1.437 inch

**Mechanical data**

Marking	1 ... 80
---------	----------


**Material Data**

Color	dark gray
Module color	gray/white
Fire load	6,689 MJ
Weight	420,8 g

**Commercial data**

Product Group	12 (Matrix Patch Board)
Packaging type	BOX
Country of origin	DE
GTIN	4044918455626
Customs tariff number	85369010000

**Aprobări / certificate****Country specific Approvals**

Emblemă	Aprobare	Text de aprobare suplimentar	Nume certificat
	CCA DEKRA Certification B.V.	EN 60998	NTR NL- 7623

Supus modificărilor.

WAGO Kontakttechnik GmbH & Co. KG  
/Representative Office Romania  
Sos. Pipera-Tunari nr. 1/1  
building 1, 2nd floor | 077190 Voluntari, Ilfov  
Tel.: +40-(0)31 421 85 68 | Email: info-RO@wago.com

Aveți întrebări despre produsele noastre?  
Vă stăm la dispoziție pentru preluarea apelului la +40 (0) 31 421 85 68.



CSA  
DEKRA Certification B.V.

C22.2 No. 158

1101143



KEMA/KEUR  
DEKRA Certification B.V.

EN 60998

71-  
100850

## UL-Approvals

Emblemă

Aprobare

Text de aprobare suplimentar

Nume  
certificat

UL  
UL International Germany GmbH

UL 1059

E45172

## Counterpart

## Produse compatibile

## check



Nr. articol: 210-137

Test plug; 2.3 mm Ø; with 500 mm cable; yellow

[www.wago.com/210-137](http://www.wago.com/210-137)

## Marking accessories



Nr. articol: 209-185

Adaptor; gray

[www.wago.com/209-185](http://www.wago.com/209-185)

Nr. articol: 209-500/209-035

WSB marking card; as card; MARKED; X (100x); not stretchable; Horizontal marking; snap-on type; white /209-035

[www.wago.com/209-500](http://www.wago.com/209-500)

Nr. articol: 209-501

WSB marking card; as card; not stretchable; plain; snap-on type; white

[www.wago.com/209-501](http://www.wago.com/209-501)

Nr. articol: 209-501/000-002

WSB marking card; as card; not stretchable; plain; snap-on type; yellow

[www.wago.com/209-501/000-002](http://www.wago.com/209-501/000-002)

## Supus modificărilor.

WAGO Kontakttechnik GmbH & Co. KG  
/Representative Office Romania  
Sos. Pipera-Tunari nr. 1/1  
building 1, 2nd floor | 077190 Voluntari, Ilfov  
Tel.: +40-(0)31 421 85 68 | Email: info-RO@wago.com

Aveți întrebări despre produsele noastre?  
Vă stăm la dispoziție pentru preluarea apelului la +40 (0) 31 421 85 68.



**Nr. articol: 209-501/000-005**  
WSB marking card; as card; not stretchable; plain; snap-on type; red

[www.wago.com/209-501/000-005](http://www.wago.com/209-501/000-005)



**Nr. articol: 209-501/000-006**  
WSB marking card; as card; not stretchable; plain; snap-on type; blue

[www.wago.com/209-501/000-006](http://www.wago.com/209-501/000-006)



**Nr. articol: 209-501/000-007**  
WSB marking card; as card; not stretchable; plain; snap-on type; gray

[www.wago.com/209-501/000-007](http://www.wago.com/209-501/000-007)



**Nr. articol: 209-501/000-012**  
WSB marking card; as card; not stretchable; plain; snap-on type; orange

[www.wago.com/209-501/000-012](http://www.wago.com/209-501/000-012)



**Nr. articol: 209-501/000-017**  
WSB marking card; as card; not stretchable; plain; snap-on type; light green

[www.wago.com/209-501/000-017](http://www.wago.com/209-501/000-017)



**Nr. articol: 209-501/000-023**  
WSB marking card; as card; not stretchable; plain; snap-on type; green

[www.wago.com/209-501/000-023](http://www.wago.com/209-501/000-023)



**Nr. articol: 209-501/000-024**  
WSB marking card; as card; not stretchable; plain; snap-on type; violet

[www.wago.com/209-501/000-024](http://www.wago.com/209-501/000-024)



**Nr. articol: 209-502**  
WSB marking card; as card; MARKED; 1 ... 10 (10x); not stretchable; Horizontal marking; snap-on type; white

[www.wago.com/209-502](http://www.wago.com/209-502)



**Nr. articol: 209-566**  
WSB marking card; as card; MARKED; 1 ... 50 (2x); not stretchable; Horizontal marking; snap-on type; white

[www.wago.com/209-566](http://www.wago.com/209-566)



**Nr. articol: 210-612**  
Marking strips; for self-marking; plain; Self-adhesive; transparent

[www.wago.com/210-612](http://www.wago.com/210-612)



**Nr. articol: 726-905**  
Adaptor; dark gray

[www.wago.com/726-905](http://www.wago.com/726-905)

#### tools



**Nr. articol: 210-719**  
Operating tool; Blade: 2.5 x 0.4 mm; with a partially insulated shaft

[www.wago.com/210-719](http://www.wago.com/210-719)

#### Jumper



**Nr. articol: 709-107**  
Wire commoning chain; insulated; 32 connections; gray

[www.wago.com/709-107](http://www.wago.com/709-107)

#### Insulation stop



**Nr. articol: 726-901**  
Insulation stop; 0.08 - 0.2 mm<sup>2</sup> "s" (0.14 mm<sup>2</sup> "f-st"); 4 x 3 pieces/strip; white

[www.wago.com/726-901](http://www.wago.com/726-901)

Supus modificărilor.



Nr. articol: 726-906

Insulation stop; 0.25 mm<sup>2</sup> "s"; 0.14 - 0.25 mm<sup>2</sup> "f-st"; 4 x 3 pieces/strip; light gray[www.wago.com/726-906](http://www.wago.com/726-906)

Nr. articol: 726-907

Insulation stop; 0.25 - 0.5 mm<sup>2</sup> "s+f-st"; 4 x 3 pieces/strip; dark gray[www.wago.com/726-907](http://www.wago.com/726-907)

#### General accessories



Nr. articol: 726-902

Adaptor; dark gray

[www.wago.com/726-902](http://www.wago.com/726-902)

Nr. articol: 726-903

Matrix patchboard; 4,00 mm<sup>2</sup>; white[www.wago.com/726-903](http://www.wago.com/726-903)

Nr. articol: 726-904

Matrix patchboard; insulated; 4,00 mm<sup>2</sup>; gray[www.wago.com/726-904](http://www.wago.com/726-904)

#### ferrule



Nr. articol: 216-123

Ferrule; Sleeve for 1 mm<sup>2</sup> / AWG 18; uninsulated; electro-tin plated[www.wago.com/216-123](http://www.wago.com/216-123)

Nr. articol: 216-202

Ferrule; Sleeve for 0.75 mm<sup>2</sup> / 18 AWG; insulated; electro-tin plated; gray[www.wago.com/216-202](http://www.wago.com/216-202)

## Descărcări

### Documentation

#### Additional Information

Technical explanations	Apr 3, 2019	pdf 2,1 MB	Descărcare
------------------------	-------------	---------------	------------

## CAD/CAE-Data

### CAD data

2D/3D Models 726-721	URL	Descărcare
----------------------	-----	------------

### CAE data

EPLAN Data Portal 726-721	URL	Descărcare
---------------------------	-----	------------

WSCAD Universe 726-721	URL	Descărcare
------------------------	-----	------------

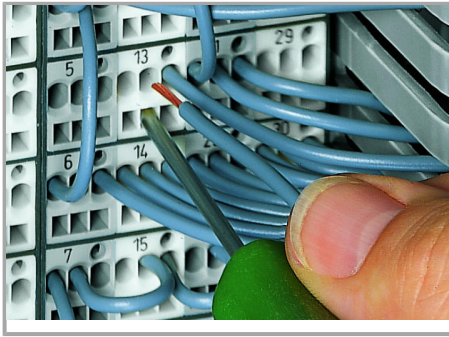
## Installation Notes

### Inserting a conductor

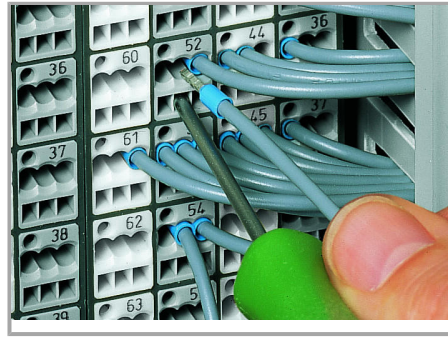
Supus modificărilor.

WAGO Kontakttechnik GmbH & Co. KG  
/Representative Office Romania  
Sos. Pipera-Tunari nr. 1/1  
building 1, 2nd floor | 077190 Voluntari, Ilfov  
Tel.: +40-(0)31 421 85 68 | Email: info-RO@wago.com

Aveți întrebări despre produsele noastre?  
Vă stăm la dispoziție pentru preluarea apelului la +40 (0) 31 421 85 68.



CAGE CLAMP® connection



CAGE CLAMP® connection

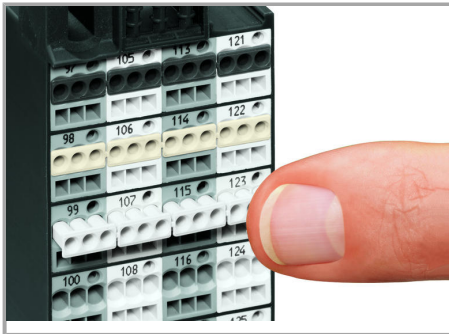
	Max. conductor cross section (mm <sup>2</sup> /AWG) without ferrule	Max. conductor cross section (mm <sup>2</sup> /AWG) with ferrule			
		insulated		uninsulated	
		Item No./Color		Item No.	
Side 2	1.5	0.75	216-202/ gray	1	216-103
Side 1	1.5	0.75	216-202/ gray	1	216-103
Side 2	2.5	1.5	216-204/ black	1.5	216-104
Side 1	1.5	0.75	216-202/ gray	1	216-103

Ferrules

Inserting a conductor via 210-719 Operating Tool (2.5 x 0.4 mm blade).

Inserting a conductor with ferruled conductors.

Inserting a conductor

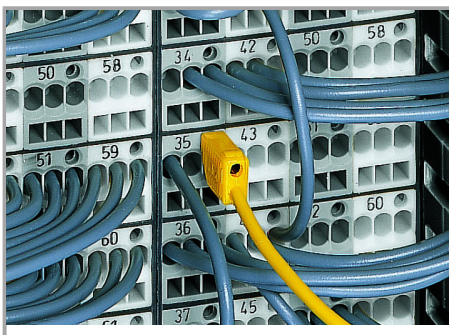


Inserting an insulation stop into conductor entry holes of matrix patchboards.



Inserted insulation stop.

Testing



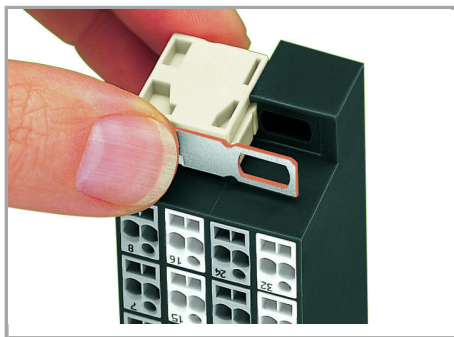
Testing with a 2.3 mm Ø test plug (210-137).

Supus modificărilor.

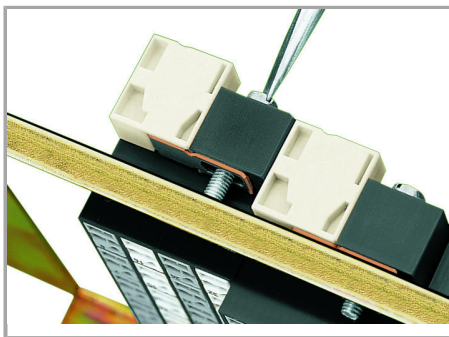
WAGO Kontakttechnik GmbH & Co. KG  
 /Representative Office Romania  
 Sos. Pipera-Tunari nr. 1/1  
 building 1, 2nd floor | 077190 Voluntari, Ilfov  
 Tel.: +40-(0)31 421 85 68 | Email: info-RO@wago.com

Aveți întrebări despre produsele noastre?  
 Vă stăm la dispoziție pentru preluarea apelului la +40 (0) 31 421 85 68.

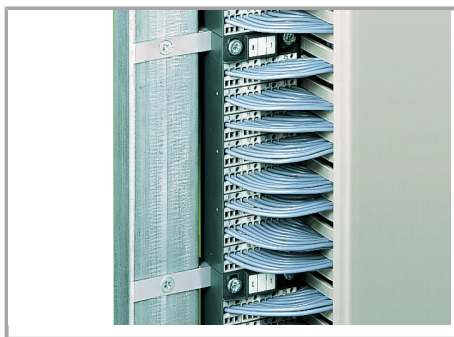




Snapping on an additional module with contact to mounting frame.



Assembling a matrix patchboard with additional module – direct connection to the mounting frame.

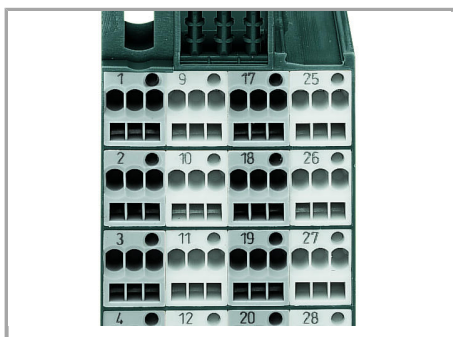


Installation example:

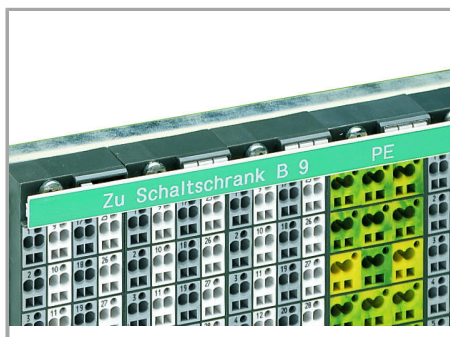
Matrix patchboards in a frame

Marking

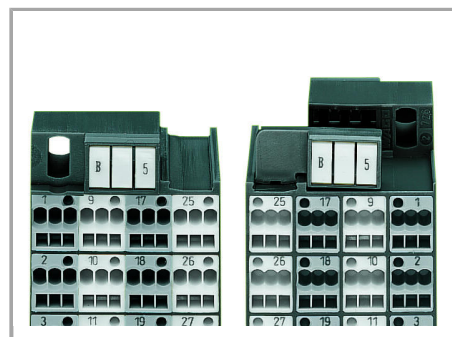
Supus modificărilor.



Factory-marked modules



WFB continuous marking strip – fits into the matrix patchboards' marker slot and group marker carrier.



Individual group marking via WSB Quick Marking System.

Side 1: 1, 2, 3, 4 ...

Supus modificărilor.