

Descriere articol

- For low voltages up to 50 V
- Compact size, standardized interface
- Available in two different custom coding options with mismatching protection

Supus modificărilor.

WAGO Kontakttechnik GmbH & Co. KG
/Representative Office Romania
Sos. Pipera-Tunari nr. 1/1
building 1, 2nd floor | 077190 Voluntari, Ilfov
Tel.: +40-(0)31 421 85 68 | Email: info-RO@wago.com

Aveți întrebări despre produsele noastre?
Vă stăm la dispoziție pentru preluarea apelului la +40 (0) 31 421 85 68.

**Note:**

All connectors for mounted installations (snap-in versions for lighting fixtures or devices, all types of PCB and distribution connectors) are factory-equipped with locking levers to ensure plugs and sockets are securely locked. Additional locking levers are only required for flying leads (plug /socket).

Note on mismatching protection:

All WINSTA[®] components are 100% protected against mismatching when:

- a.) plugging different numbers of poles
- b.) plugging while rotated 180
- c.) plugging while laterally staggered
- d.) plugging one pole

Date**Electrical data**

Note on Contact Resistance

<p>approx. 3mΩ contact resistance</p>

Ratings per IEC/EN 60664-1

Ratings per	IEC/EN 60664-1
Nominal voltage (III/3)	50 V
Rated surge voltage (III/3)	0,8 kV
Rated current	3 A
Legend (ratings)	(III / 3) ≙ Overvoltage category III / Pollution degree 3

Connection data

Connection technology	PUSH WIRE [®]
Actuation type	Push-in
Conductor diameter	0,8 mm
Strip length	9 mm / 0.35 inch
Note (strip length)	see also packaging or instructions
Pole No.	2
Total number of connection points	2
Total number of potentials	2
Connectable sheathed cable diameter	5 ... 7 mm
Conductor entry direction to mating direction	0°

Geometrical Data

Width	14,1 mm / 0.555 inch
Depth	47,5 mm / 1.87 inch

Supus modificărilor.

WAGO Kontakttechnik GmbH & Co. KG
 /Representative Office Romania
 Sos. Pipera-Tunari nr. 1/1
 building 1, 2nd floor | 077190 Voluntari, Ilfov
 Tel.: +40-(0)31 421 85 68 | Email: info-RO@wago.com

Aveți întrebări despre produsele noastre?
 Vă stăm la dispoziție pentru preluarea apelului la +40 (0) 31 421 85 68.



Mechanical data

Technologie	KNX
Coding	E
Mating force of a plug-in connection	approx. 10 ... 15 N
Retention force of a plug-in connection	Locked: > 80 N
Unmating force of a plug-in connection	when unlocked: approx. 15 ... 20 N
Number of mating cycles	200
Marking	1+ 2-
Protection type	IP20
Note on protection type	Only when mated and secured with a strain relief housing (These compact connectors are not designed for use in open, easily accessible areas.)
Potential marking	1+ 2-
Application	KNX

Plug connection

Contact type (pluggable connector)	Male connector/plug
Connector (connection type)	for conductor
Mismating protection	Yes
Locking of plug-in connection	locking lever
Locking lever	retrofitable
Strain relief	strain relief housing

Material Data

Color	green
Insulation material	Polyamide 66 (PA 66)
Fire class per EN 50575	E _{ca}
Clamping spring material	Chrome nickel spring steel (CrNi)
Contact material	Copper alloy (surface-treated)
Fire load	0,171 MJ
Weight	5,7 g

Supus modificărilor.

WAGO Kontakttechnik GmbH & Co. KG
 /Representative Office Romania
 Sos. Pipera-Tunari nr. 1/1
 building 1, 2nd floor | 077190 Voluntari, Ilfov
 Tel.: +40-(0)31 421 85 68 | Email: info-RO@wago.com

Aveți întrebări despre produsele noastre?
 Vă stăm la dispoziție pentru preluarea apelului la +40 (0) 31 421 85 68.

Environmental Requirements

Processing temperature	-5 ... +40 °C
Continuous operating temperature	-35 ... +85 °C
Note on continuous operating temperature	Insulating parts for temperatures ≤ 105 °C

Commercial data

Product Group	20 (WINSTA)
Packaging type	BOX
Country of origin	CH
GTIN	4045454267445
Customs tariff number	85366990990

Counterpart

	Nr. articol893-1002 Socket; with strain relief housing; 2-pole; Cod. E; green	www.wago.com/893-1002
	Nr. articol893-122 Tap-off module; for flat cable; 2-pole; Cod. E; with cable connection on the output side; green	www.wago.com/893-122
	Nr. articol893-1606 T-distribution connector; 2-pole; Cod. E; 1 input; 2 outputs; green	www.wago.com/893-1606
	Nr. articol893-2002 Snap-in socket; without locking lever; 2-pole; Cod. E; green	www.wago.com/893-2002
	Nr. articol894-8992/033-106 pre-assembled interconnecting cable; Eca; Socket/plug; 2-pole; Cod. E; J-Y(ST)Y...LG 2x2x0.8; 1 m; green	www.wago.com/894-8992/033-106
	Nr. articol893-262 Tap-off module; for flat cable; 5 x 2.5 mm ² + 2 x 1.5 mm ² ; 2-pole; Cod. E; green	www.wago.com/893-262
	Nr. articol894-8992/133-106 pre-assembled connecting cable; Eca; Socket/open-ended; 2-pole; Cod. E; J-Y(ST)Y...LG 2x2x0.8; 1 m; green	www.wago.com/894-8992/133-106

Supus modificărilor.

Descărcări
CAD/CAE-Data

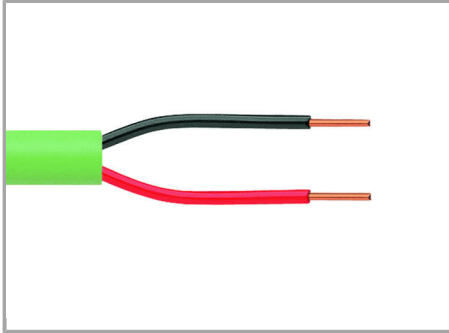
CAE data

WSCAD Universe 893-1012

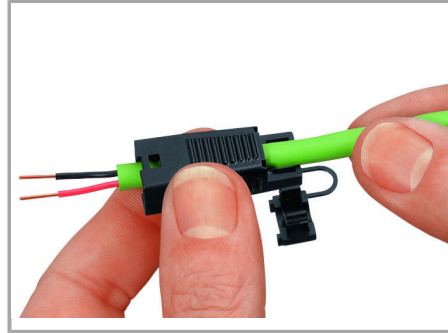
URL

Descărcare

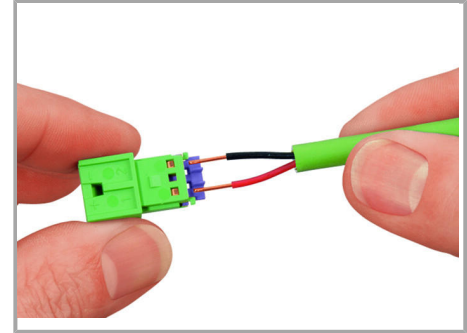
Installation Notes



1. Strip length, outer insulation = 23 mm

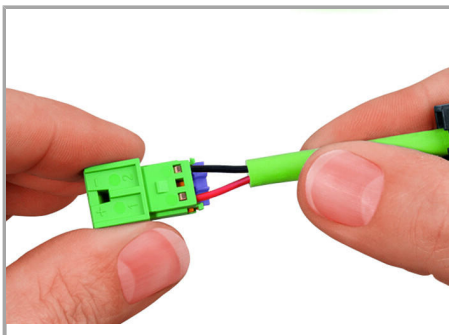


Prior to termination, pull the strain relief housing over the cable.



Insert stripped conductors directly into the conductor entries.

2. Strip length = 9 mm



Push conductors until they hit backstop.

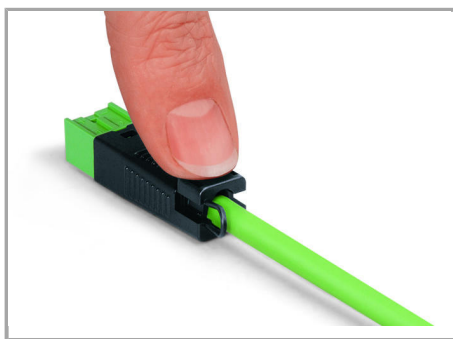


To disconnect, open clamping unit using the actuator and pull out the conductor.

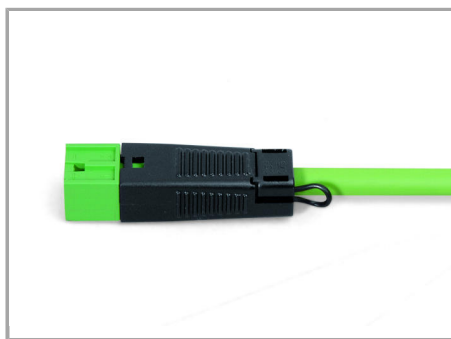


Snap wired connector into the strain relief housing.

Supus modificărilor.

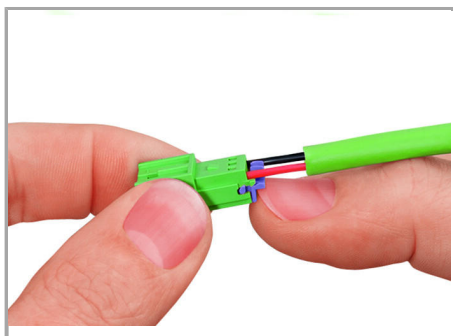


Press strain relief firmly on the cable.



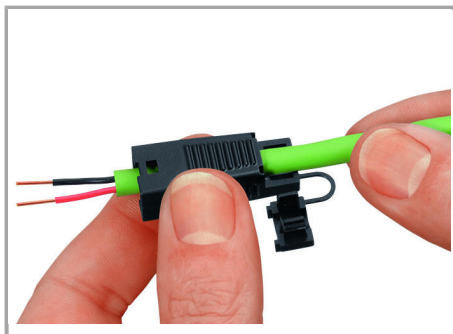
Pre-assembled KNX connector

Conductor removal



To disconnect, open clamping unit using the actuator and pull out the conductor.

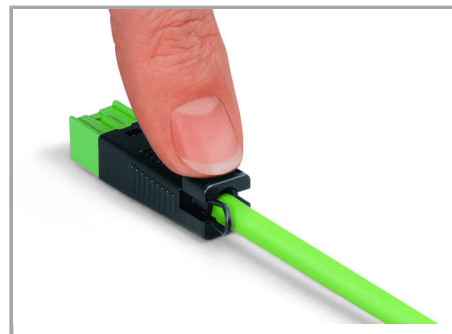
Installation



Prior to termination, pull the strain relief housing over the cable.

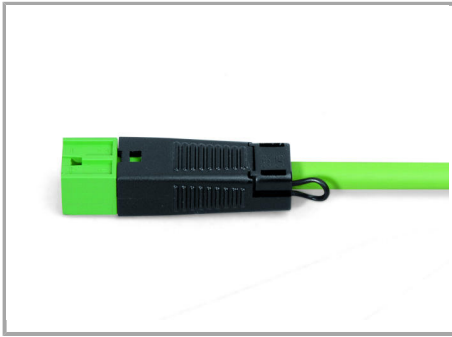


Snap wired connector into the strain relief housing.



Press strain relief firmly on the cable.

Supus modificărilor.



Pre-assembled KNX connector

Familie de produse

WINSTA® KNX

Afișare globală produse din familie.

Supus modificărilor.