

Surge arrester ETITEC group C T2

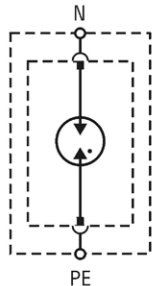
EN/IEC/VDE: T2/II/C

ETITEC C T2			
Type	275/20	440/20	255/20 G
In accordance with	IEC/EN 61643-11		
Category IEC/EN/VDE	II/T2/C		
Max. continuous operating voltage (AC) U_c	275	440	255
Nominal AC voltage U_o	230 V 50-60 Hz		
TOV immunity U_t (AC)	335 V/5s withstand	335 V/5s withstand	1200 V
	440 V/120 min safe disconnection	440 V/120 min withstand	-
Nominal discharge current (8/20) I_n	20 kA		
Max. discharge current (8/20) I_{max}	40 kA		
Charge			
Protection level U_p - at I_n (8/20)	<1,5 kV	<2,0 kV	<1,5 kV
Follow current I_f	x		>100 A
Response time t_A	< 25 ns		< 100 ns
Residual current I_{pe} at U_{ref}	< 0,2 mA		-
Thermal decoupler	✓		-
Torque	3,0 Nm		
Back-up fuse (if mains > 125A)	125 A gG		-
Short-circuit current rating I_{scCR}	25 kA / 50 Hz		-
Temperature range	- 40°C ... +70°C		
Cross-section of connection wire	min. 6mm ² , max. single strand 35mm ² , multi-strand 25mm ²		
Mounting	indoors on top hat fixing rail 35 mm (EN 60715)		
Degree of protection	IP 20		
Casing material	thermoplastic; extinguishing degree UL 94 V-0		
Dimensions	1 TE ... 4 TE		
Indication of disconnector operation	red flag		
Permissible humidity	5% - 95%		
Additional data for ETITEC C-RC			
Remote signalisation (RC)	✓		-
Switching capability (RC)	AC: 250V/0.5A; 125V/3A		-
Cross-section of connection wire (RC)	max. 1.5 mm ²		-
Torque (RC)	0,25 Nm		-

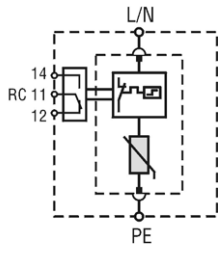
Type of network and nr. of SPD poles

Network	Nr of poles (SPD configuration)
TNC 1phase	1+0
TNC 3 phase	3+0
TNS 1 phase	2+0 / 1+1
TNS 3 phase	4+0 / 3+1
TT 1 phase	1+1
TT 3 phase	3+1
IT 1 phase	2+0
IT 3 phase	4+0

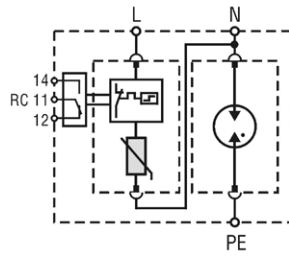
At TNC, TNS, TT systems with $U_n=230V$, recommended U_c value of SPD is 275V.
At IT system, recommended U_c value of SPD is 440V.



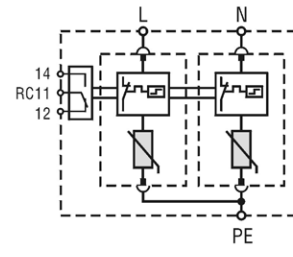
ETITEC CT2 G



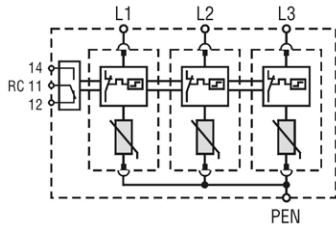
ETITEC CT2 1+0 RC



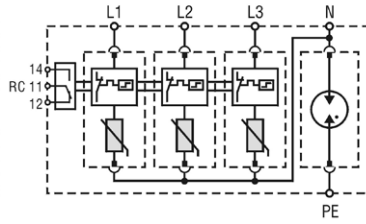
ETITEC CT2 1+1 RC



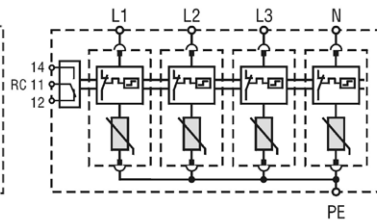
ETITEC CT2 2+0 RC



ETITEC CT2 3+0 RC

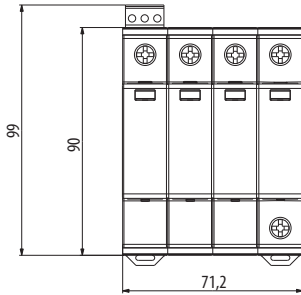


ETITEC CT2 3+1 RC

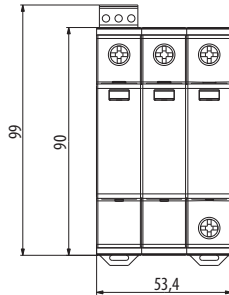


ETITEC CT2 4+0 RC

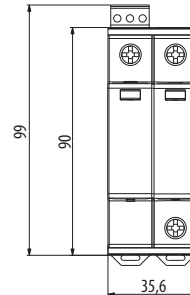
ETITEC CT2 275/20 4+0 RC
ETITEC CT2 275/20 3+1 RC



ETITEC CT2 275/20 3+0 RC



ETITEC CT2 275/20 2+0 RC
ETITEC CT2 275/20 1+1 RC



ETITEC CT2 275/20 1+0 RC

