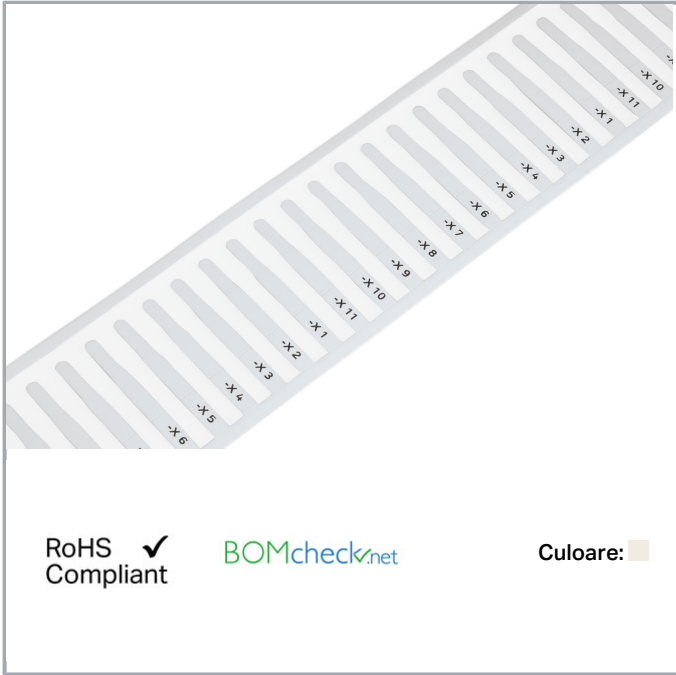


Fișă tehnică | Număr articol: 211-811

Marker card; for Smart Printer; for use in nozzles; Length: 12 mm; white

www.wago.com/211-811



Date

Technical Data

Marking	plain
Marking	plain
Pre-assembly	2,500 markers/reel
Marking device	Smart Printer (Thermal Transfer Printer)

Geometrical Data

Depth	0,26 mm
Marking surface	4 x 12 mm

Mechanical data

Mounting type	Insertion
Smear resistance	smear resistant in combination with ink ribbon 258-5005

Supus modificărilor.

WAGO Kontakttechnik GmbH & Co. KG
/Representative Office Romania
Sos. Pipera-Tunari nr. 1/1
building 1, 2nd floor | 077190 Voluntari, Ilfov
Tel.: +40-(0)31 421 85 68 | Email: info-RO@wago.com

Aveți întrebări despre produsele noastre?
Vă stăm la dispoziție pentru preluarea apelului la +40 (0) 31 421 85 68.

Material Data

Color	white
Material	PET
Halogen-free	Yes
Weight	221 g

Environmental Requirements

Surrounding air temperature (storage)	10 ... 22 °C
Surrounding air temperature (operation)	-20 ... 80 °C
Relative humidity	40 ... 50 %




Commercial data

Product Group	2 (Terminal Block Accessories)
Packaging type	BOX
Country of origin	DE
GTIN	4050821674979
Customs tariff number	39269097900

Counterpart

Produse compatibile

Marking accessories

	Nr. articol: 211-812 Nozzles; Length: 12 mm; For the use of 211-811; halogen-free; Cable outer diameter: 1.4 ... 5.0 mm	www.wago.com/211-812
	Nr. articol: 211-813 Nozzles; Length: 12 mm; For the use of 211-811; halogen-free; Cable outer diameter: 5.0 ... 11.0 mm	www.wago.com/211-813
	Nr. articol: 258-5000 Thermal transfer printer; Smart Printer; for complete control cabinet marking; 300 dpi	www.wago.com/258-5000

Descărcări

Documentation

Additional Information

211-821, Information on handling print material	V002.08.2017	pdf 1,6 MB	Descărcare
---	--------------	---------------	------------

Supus modificărilor.

Installation Notes

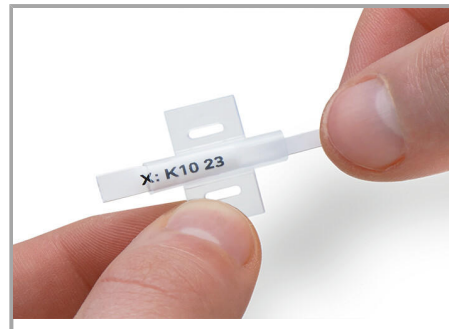
Marking



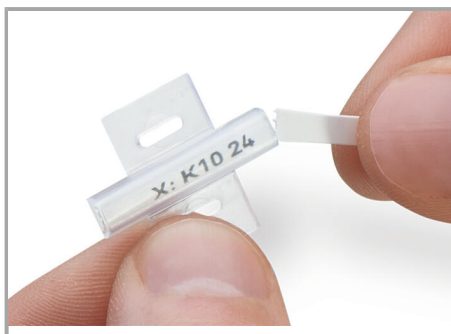
Remove the printed marker from the reel.



Slide the marker into the marking sleeve receptacle. Exchanging the marker is also possible after the conductor has been terminated.



Slide the marker through the marker slot up to the end of the sleeve.



Then remove the rest of the card by twisting it off.

Supus modificărilor.