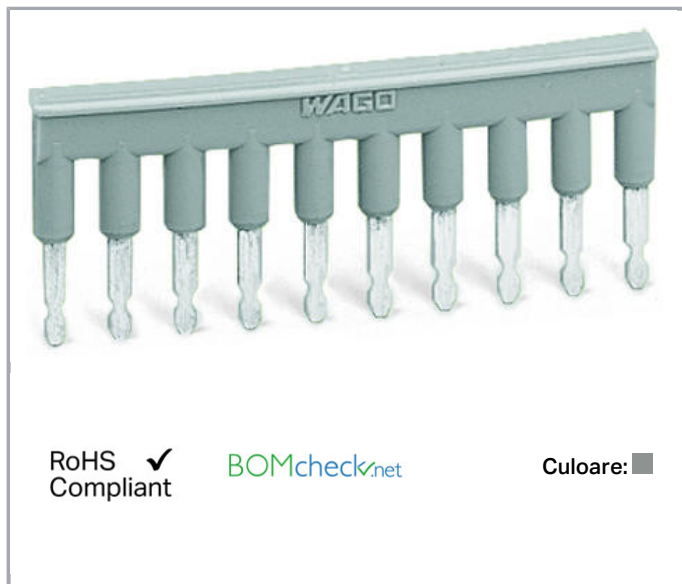


Fișă tehnică | Număr articol: 281-490

Comb-style jumper bar; insulated; 10-way; IN = IN terminal block; gray

www.wago.com/281-490



Date

Geometrical Data

Width	60 mm / 2.362 inch
Depth	5 mm / 0.197 inch

Material Data

Color	gray
Fire load	0,018 MJ
Weight	8,2 g

Commercial data

Packaging type	BOX
Country of origin	DE
GTIN	4044918524308
Customs tariff number	85366990990

Counterpart

Supus modificărilor.

WAGO Kontakttechnik GmbH & Co. KG
/Representative Office Romania
Sos. Pipera-Tunari nr. 1/1
building 1, 2nd floor | 077190 Voluntari, Ilfov
Tel.: +40-(0)31 421 85 68 | Email: info-RO@wago.com

Aveți întrebări despre produsele noastre?
Vă stăm la dispoziție pentru preluarea apelului la +40 (0) 31 421 85 68.

Produse compatibile

tools



Nr. articol: 281-440

Operating tool; made of insulating material; 5-way

www.wago.com/281-440

Descărcări

Documentation

Additional Information

Technical explanations	Apr 3, 2019	pdf 2,1 MB	Descărcare
------------------------	-------------	---------------	------------

CAD/CAE-Data

CAD data

2D/3D Models 281-490	URL	Descărcare
----------------------	-----	------------

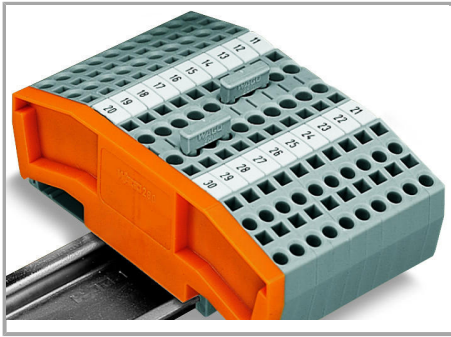
CAE data

WSCAD Universe 281-490	URL	Descărcare
------------------------	-----	------------

Installation Notes

Jumpered

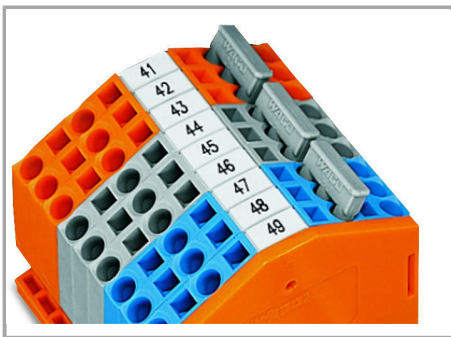
Supus modificărilor.



Commoning with comb-style jumper bar.

Push comb-style jumper bar down until fully inserted.

Jumpered

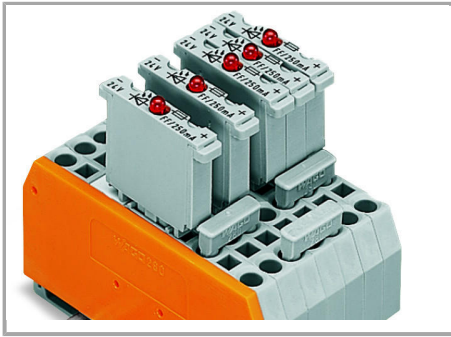


4-conductor through terminal blocks, angled type –

formation of groups with 3-way, comb-style jumper bars

Jumpered

Supus modificărilor.

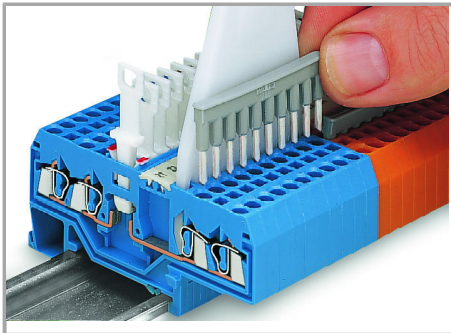


Carrier terminal blocks with component plugs,

alternate comb-style jumper bars,

3-way, comb-style jumper bar

Jumpered



Commoning front-entry disconnect terminal blocks via comb-style jumper bar using a 10-pole operating tool.

Supus modificărilor.