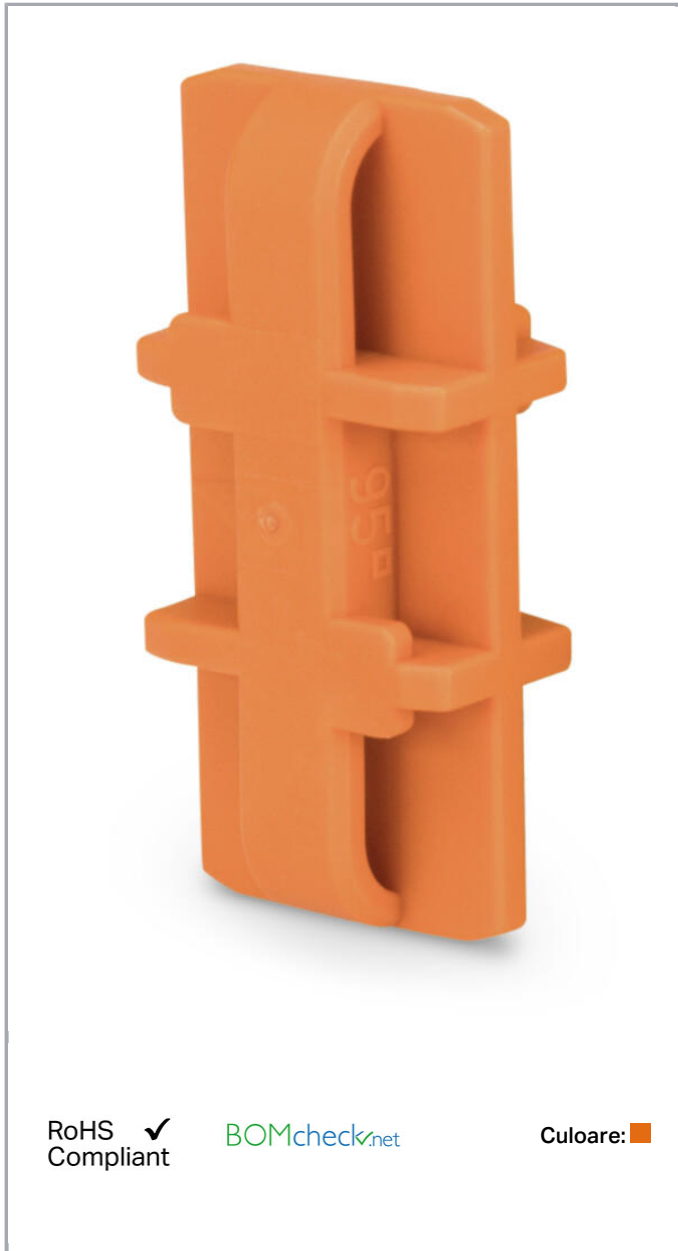


Fișă tehnică | Număr articol: 285-168

Fixing element; for 95 mm² high-current terminal blocks; orange

www.wago.com/285-168



RoHS 
Compliant

[BOMcheck.net](https://www.bomcheck.net)

Culoare: 

Date

Material Data

Supus modificărilor.

WAGO Kontakttechnik GmbH & Co. KG
/Representative Office Romania
Sos. Pipera-Tunari nr. 1/1
building 1, 2nd floor | 077190 Voluntari, Ilfov
Tel.: +40-(0)31 421 85 68 | Email: info-RO@wago.com

Aveți întrebări despre produsele noastre?

Vă stăm la dispoziție pentru preluarea apelului la +40 (0) 31 421 85 68.

Color	orange
Weight	1,6 g

Commercial data

Packaging type	BOX
Country of origin	PL
GTIN	4055143578172
Customs tariff number	39269097900

Counterpart

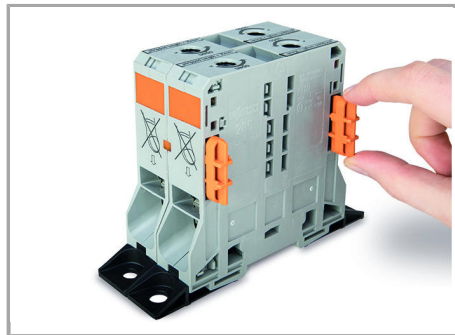
Descărcări Documentation

Additional Information

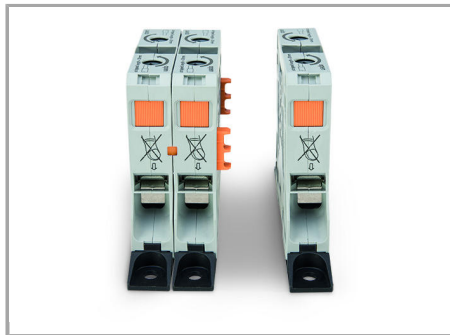
Technical explanations	Apr 3, 2019	pdf 2,1 MB	Descărcare
------------------------	-------------	---------------	------------

Installation Notes

Installation



Optionally, insert block-to-block connector (285-168) into housing slot.



Align and snap high-current, through terminal blocks together.

Familie de produse

POWER CAGE CLAMP

[Afișare globală produse din familie.](#)

Supus modificărilor.