



# REQUEST FOR QUALIFICATIONS

## CALL TO ARTISTS

Indoor Wall Mural, on a Medical College Campus, Suwanee, GA

### Overview

PCOM Georgia is seeking professional muralists and/or muralist teams to submit their interest and qualifications to design and install an interior mural in the atrium of our main building: The mural will be painted on an interior finished drywall, of approximately 1,200 sq. ft. in area. The mural should cover the entire surface of the wall as currently done by the existing wallpaper mural which is being replaced.

#### ELIGIBILITY

Open to professional public muralists and muralist teams, over the age of 18 who have the demonstrated ability to execute an art project of this scale and budget. The selected artist(s) will be required to comply with the E-Verify process. Preference will be given to artists who are based in Georgia.

#### SCOPE

There is one option associated within the scope of the project, which may/may not include adhering wallpaper material (refer to the details within this RFQ).

#### BUDGET

The all-inclusive budget for this project is UP TO \$35,000 to include artist fees, supplies, travel, and other associated expenses. This budget would include the primary wall, and the addition of any “options” the artist may choose to incorporate – including texture or mosaic elements. (see Project Scope).

#### RFQ DETAILS AT A GLANCE

<b>DEADLINE TO SUBMIT RFQ</b>	April 30, 2025
<b>SELECTION NOTIFICATION</b>	May 21, 2025
<b>DESIGN &amp; INSTALLATION</b>	May – July for design with input from the committee. August – October installation.
<b>BUDGET</b>	<u>UP TO</u> \$35,000 inclusive of supplies, travel, artist fees and other associated expenses.
<b>LOCATION</b>	Suwanee, Georgia (30 mi. northeast of Atlanta)

# ABOUT PCOM

Established in 1899, Philadelphia College of Osteopathic Medicine has trained thousands of highly competent, caring physicians, health practitioners and behavioral scientists who practice a “whole person” approach, treating people, not just symptoms.

## PCOM GEORGIA

SUWANEE, GA

Responding to a growing need for healthcare providers in the South, PCOM established a new, state-of-the-art campus in Suwanee, Georgia in 2005. Today, PCOM Georgia offers a range of health-related degree programs, enabling students to gain an education close to home with the aim of serving the health needs of their communities and the region.

Our Suwanee, Georgia campus (located in Gwinnett County in the metro Atlanta area) is home to a [medical school](#), a [pharmacy school](#) and a [doctor of physical therapy program](#). We also offer graduate degrees in [physician assistant studies](#), [biomedical sciences](#) and [medical laboratory sciences](#). Select a program below to learn about the curriculum, faculty and staff and admissions requirements.

Visit: <https://www.pcom.edu/campuses/georgia-campus/> to learn about PCOM Georgia.

## Project Scope

This project is located in the atrium of the main building, located at 625 Old Peachtree Rd., Suwanee GA 30024. The atrium is centrally located in the building and is a vibrant hub where people from all four quadrants of the building pass on their way to other parts of campus. The north wall of the atrium will be used for this project. The wall work surface area is approximately 1,278 SF. The dimensions are approximately: 71’ wide by 18’ high. See photo and sketch below for more information. The reason PCOM is taking on this project now, is that it will highlight our twenty years of existence since the Georgia campus was opened. The existing DNA helix is quite impressive and shows really well in the background of the innumerable events that have taken place in the atrium over the past 20 years. The selected artist should incorporate a version of DNA image in the new mural that seamlessly ties back to the original mural.

There is only one other wall mural in the building. See photo of a Timeline wall located about 50’ north of the atrium where this work will take place.

### **OPTIONS and CONSIDERATIONS:**

1. PCOM will consider a direct to wall-painted project as the primary choice
2. PCOM will also consider wallpaper applied to the drywall surface

3. Digital wall-art will not be considered due to the large skylight above the atrium

## Site Details

The interior wall currently depicts a DNA helix wallpaper that was installed in 2005. The wallpaper will be removed and the drywall will be sanded and spackled and a base coat of paint will be applied by others. This will be the surface upon which the selected artist will work.

This is a well-lit area during daylight hours, receiving significant direct sunlight from a cluster of four large skylights. A line of LED tube lamps illuminates the wall and is mounted on the wall, about 17' above ground. The area is climate controlled and maintains a temperature between 68 – 77 degrees F, year-round.

The artwork will begin at the base of the wall where a 4" cove base is installed and likely remain. Since this area is the busiest section in the building, frequent contact with the wall is inevitable as people traverse the atrium. The atrium also hosts various events and activities. Invariably, items may lean against or be set against the wall.



Photo #1 of the entire wall





Photo #2: Northview of the wall



Photo #3 East view of the wall

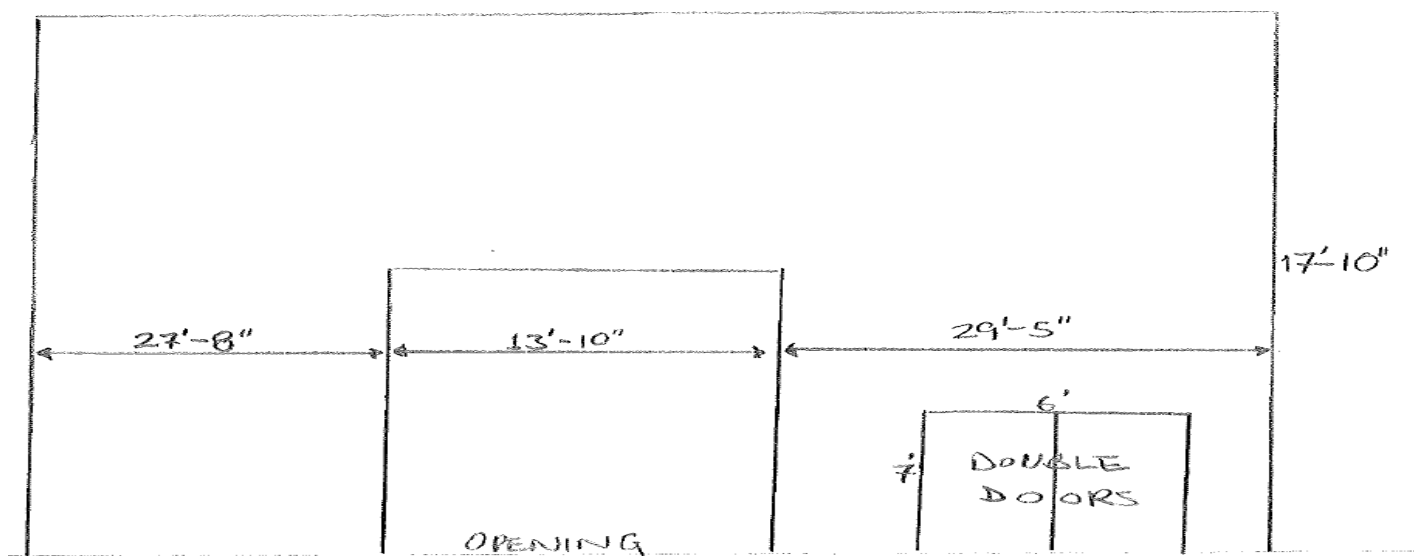




Photo #4 West view of the wall and skylights



Photo of nearby wall mural (for reference; this wall is not part of the project and will remain)



APPROXIMATE DIMENSIONS OF THE WALL AND OPENINGS

# Visibility and Promotion

The atrium area where the project will be done is the only common space on campus where events take place and is a buzzing space of activity given its central location in the building. All major hallways lead to the atrium. Although this is an interior wall, the space is frequently featured on social media when events are promoted. PCOM Georgia campus hosts approximately 1,100 students and many internal and some external events.

## PCOM Georgia Mural Request for Qualifications: Submission Instructions and Details

### SELECTION PROCESS

PCOM's internal committee will review all RFQ submissions and will then either make a final artist selection and work with them to develop a proposal, or select and invite semi-finalists to develop proposals. If semi-finalists are selected, a stipend will be offered. Once the final artist/team has been selected, they will work with the college's committee members to fully develop a design concept.

### TIMELINE

- April 3, 2025 – RFQ announced
- April 30, 2025 – Deadline for submissions to be received
- May 15, 2025 – Artist/team selected, or semi-finalists named
- (May 16 – June 13, 2025 – Design competition phase, if semi-finalists are selected)
- July, 2025 – Design development and final concept approved by PCOM.
- August – October 15, 2025 – Project installed and completed by **October 15, 2025**

### APPLICATION

Please submit all materials through the CODAworx.com Portal (see next page for CODAworx instructions).

**All materials to be received no later than 5:00 p.m. on April 30, 2025.**

**THANK YOU!**

***We look forward to reviewing your qualifications.***

# CODAworx Submission Process

Applications accepted through the CODAworx.com Portal here-

<https://www.codaworx.com/rfp/rfp-detail/indoor-wall-mural-for-medical-college-campus>

## APPLICATION REQUIREMENTS

1. Basic Contact information
2. Brief Cover Letter detailing interest and ability to complete the project.
3. Resume outlining professional qualifications to demonstrate experience with a public art or installation project of similar scope (max. 5 pages)
4. Work examples: Five JPEG images of work with title, size, medium, date and price/commission value if applicable, as well as a brief description of the artwork
5. Optional information on Team Members

For guidance on how to apply, please see the following article

<https://knowledge.codaworx.com/knowledge/how-do-you-apply-for-calls-on-codaworx>

## QUESTIONS

For questions about the CODAworx Open Call application platform, please contact:

Sebastian Norback, CODAworx Product Manager  
[sebastian@codaworx.com](mailto:sebastian@codaworx.com) (608) 716-4269

**All materials to be received no later than 5:00 p.m. on **APRIL 30, 2025.****