

BODYGUARD® Slatted Frame

Instructions for use and warranty

BODYGUARD® Slatted Frame

Content

1. Suitable for different types of mattresses	02
2. Assembly and care	02
3. Adjustment of the head and foot sections	03
4. Spare parts	03
5. Replacement of the wooden slats	03
6. Technical details	04
7. Safety instructions for the BODYGUARD® Slatted Frame	04
8. Warranty	06
9. Deviating regulations for Austria	07

1. Suitable for different types of mattresses

The BODYGUARD® Slatted Frame is the ideal support for the BODYGUARD® Mattress and all common mattress types. The slatted frame is not zoned, but supports the ergonomic modules of the BODYGUARD® Mattress. Well-designed slat spacing provides excellent support for all suitable mattress types and contributes to their durability. The open construction allows for a pleasant sleeping climate through excellent air circulation.

With special mattress materials, such as found in some spring mattresses, the adjustability of the head and foot sections may be of limited use due to the nature of the mattress. With mattresses from other manufacturers, pay attention to the information regarding use with height-adjustable slatted frames. The maximum load capacity of the BODYGUARD® Slatted Frame is about 150 kg and refers to a total weight of the mattress and the person lying on it. The maximum weight should not be exceeded.



2. Assembly and care

The BODYGUARD® Slatted Frame is delivered to you fully assembled. All you have to do is unpack it and place it in your bed. The red cap with the white bett1.de logo is on the head section. The foot section is not marked separately. The BODYGUARD® Slatted Frame is suitable for most common bed frames. The extra wide wooden slats additionally stabilise the frame and ensure that the ergonomics of the mattress are maintained.

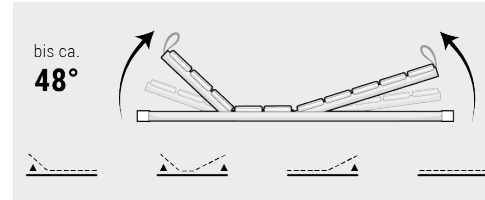
You can place any mattress on the BODYGUARD® Slatted Frame. The slat thickness is approx. 8mm and the 14 slats, like all wooden parts of the BODYGUARD® Slatted Frame are made of robust and durable real beech wood. In addition, all wooden parts are surface-treated with a resin layer and permanently impregnated.

3. Adjustment of the head and foot sections

You can adjust the head and foot sections of your BODYGUARD® Slatted Frame individually.

Simply pull up the loop at the head or foot end

of the slatted frame to adjust the height. To reduce the height or return to its original position, first lift the slatted base again by the loop and then let it slowly sink.

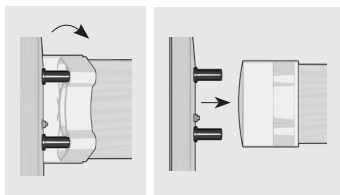


4. Spare parts

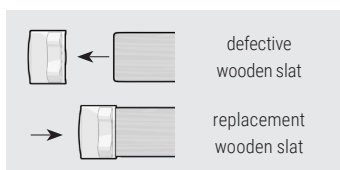
Whether you are moving or the children are romping – if individual wooden slats on the frame break, you can order replacements from us. You may incur costs for this. Simply contact our customer service (e-mail: customer@bett1.de, phone: +49 30 7673172-72).

5. Replacement of the wooden slats

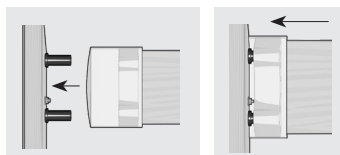
All wooden slats can be replaced if necessary.



To replace a wooden slat on your BODYGUARD® Slatted Frame, pull off the two white caps attached to the black bolts of the defective wooden slat. Angle the caps to make them easier to detach from the bolt and remove the caps with the inserted wooden slat.



Remove the white caps on the single wooden slat and place the caps on the ends of the replacement wooden slat so that the bett1.de logo is visible on the side that is curved upwards.



Then put the caps together with the new wooden slat back on the bolts to put the wooden slat in place.

6. Technical details

Weight of all sizes

Size in cm	80 x 200	80 x 210	80 x 220	90 x 200	90 x 210	90 x 220	100 x 200	100 x 210	100 x 220
Weight in kg	22,5	24	25,5	24	25,5	27	25,5	27	28,5

Size in cm	120 x 200	120 x 210	120 x 220	140 x 200	140 x 210	140 x 220
Weight in kg	31,5	33	34,5	35	36,5	38

The figures given are approximate

Cap properties

All caps are made of synthetic rubber. The weight of a single cap is about 54g. In length, a cap measures about 10.5 cm. The width is about 5.4 cm and the height about 6.7 cm. The sizes of the caps in cm (length and width) are approximate, as in some cases slight production-related deviations may occur.

7. Safety instructions for the BODYGUARD® Slatted Frame

Read these safety instructions carefully before using your BODYGUARD® Slatted Frame for the first time.

Caution! Risk of injury!



There is a risk of injury if used improperly: Do not use your BODYGUARD® Slatted Frame, if the frame or individual slats are severely cracked or broken, if screw connections have come loose or if parts of the slatted frame are missing or are damaged. Do not use the slatted frame as a climbing aid, ladder replacements, trestle or similar. Do not reach into the hinges, as there is a risk of injury.

The BODYGUARD® Slatted Frame is suitable for a maximum weight of approx. 150 kg including mattress. Do not overload the slatted frame. Do not use the slatted frame as a jumping surface under any circumstances, as the individual slats can break under such a point load.

Warning!



Danger for children, people with learning difficulties, physical or sensory disabilities or with little experience and knowledge. Make sure that children do not play with the packaging film as they could get caught in the film and suffocate. Make sure that small children do not put any individual parts in their mouths and keep children away from all parts while adjusting or repairing the slatted frame.

Note!



Risk of damage! Improper handling of the slatted frame can cause damage to the slatted frame. Do not use any pointed or sharp objects when removing the packaging. Only use the BODYGUARD® Slatted Frame in dry indoor areas and do not expose it to the effects of the weather (rain, snow, etc.). Only put weight on the slatted frame when a mattress is lying on it, otherwise the individual wooden slats may break.

Disposal

Take the BODYGUARD® Slatted Frame to your local waste disposal company after final use. Worn out wooden parts are not suitable for use as firewood, please refrain from private incinerations for disposal.

8. Warranty

General Terms

The guarantor is:

bett1.de GmbH

Tauentzienstraße 11, 10789 Berlin

Germany

Customer service:

Tel.: +49 30 7673172-72

Fax: +49 30 7673172-73

E-Mail: customercare@bett1.de

Contact form: <http://en.bett1.de/contact>

www.bett1.de

German law applies to our warranty. The scope of the warranty is limited to EU countries and Switzerland. Your statutory warranty rights remain unaffected.

Warranty scope and warranty periods

As a manufacturer of high-quality brand products, we supply you with tested quality. The BODYGUARD® Slatted Frame comes with a two-year warranty on all adjustable components is used and handled properly. When making a warranty claim, the relevant sales receipt must be presented. We would like to point out that the legal warranty may be limited in the event of improper handling. In the event of a warranty claim, we shall, at our discretion, provide a replacement of equal value or repair the defective goods. We reserve the right to repair or redeliver twice. The warranty is completely free of charge for you. In the event of a justified warranty claim, the above-mentioned services provided by us are also free of charge for you as the customer. Otherwise, any packaging and transport costs incurred (there currently amount to a maximum of EUR 79 per route and item incl. VAT) shall be borne by the buyer, as shall any repair and replacement services requested.

However, your right to prove that no damage or less than the aforementioned damage has occurred remains unaffected. There shall be no claim for damages on the basis of this warranty. Any statutory claims for damages remain unaffected.

Warranty exclusion

Excluded from the warranty are defects that have arisen due to improper use by the customer, i.e. sawing, drilling, nicks, scratches and soiling that occurred after delivery. Furthermore, the warranty does not cover any concomitant or consequential damage. The warranty therefore does not apply to damage caused by incorrect assembly, handling or care. The warranty only applies to private use and indoor use. The warranty does not apply if products have been used outdoors or in a damp environment. Mould growth is excluded from the warranty and is not accepted as a reason for complaint. The repair or replacement of the defective product does not trigger a new warranty period.

Warranty handle

1. Please use our complaint form. You can request it from our customer service (customercare@bett1.de) or download it directly from our website: <http://en.bett1.de/complaint-form.pdf>
2. We will then organise the collection of the goods free of charge or the dispatch of the corresponding spare parts, subject to reservation (see point 3).
3. We will subsequently examine the returned products and decide whether a warranty claim exists in this case.

9. Deviating regulations for Austria

The instruction for use and warranty that apply for Germany also apply for Austria, except for the exceptions listed below.

General Terms

The guarantor is:

bett1.de GmbH

Tauentzienstraße 11, 10789 Berlin

Germany

Customer service:

Tel.: +49 30 7673172-42

Fax: +49 30 7673172-73

E-Mail: customercare@bett1.de

Contact form: <http://en.bett1.de/contact>

www.bett1.at

German law applies to our warranty. The scope of the warranty is limited to EU countries and Switzerland. Your statutory warranty rights remain unaffected.

Warranty scope and warranty periods

As a manufacturer of high-quality brand products, we supply you with the tested quality. The BODYGUARD® Slatted Frame comes with a two-year warranty on all adjustable components if used and handled properly. When making a warranty claim, the relevant sales receipt must be presented. We would like to point out that the legal warranty may be limited in the event of improper handling. In the event of a warranty claim, we shall, at our discretion, provide a replacement of equal value or repair the defective goods. We reserve the right to repair or redeliver twice. The warranty is completely free of charge for you. In the event of a justified warranty claim, the above-mentioned services provided by us are also free of charge for you as the customer. Otherwise, any packaging and transport costs incurred (these currently amount to a maximum of 119 EUR incl. VAT per route and item) shall be borne by the purchaser, as shall any repair and replacement services.

However, your right to prove that no damage or less damage than the aforementioned has occurred remains unaffected. There shall be no claim for damages on the basis of this warranty. Any statutory claims for damages remain unaffected.

Warranty exclusion

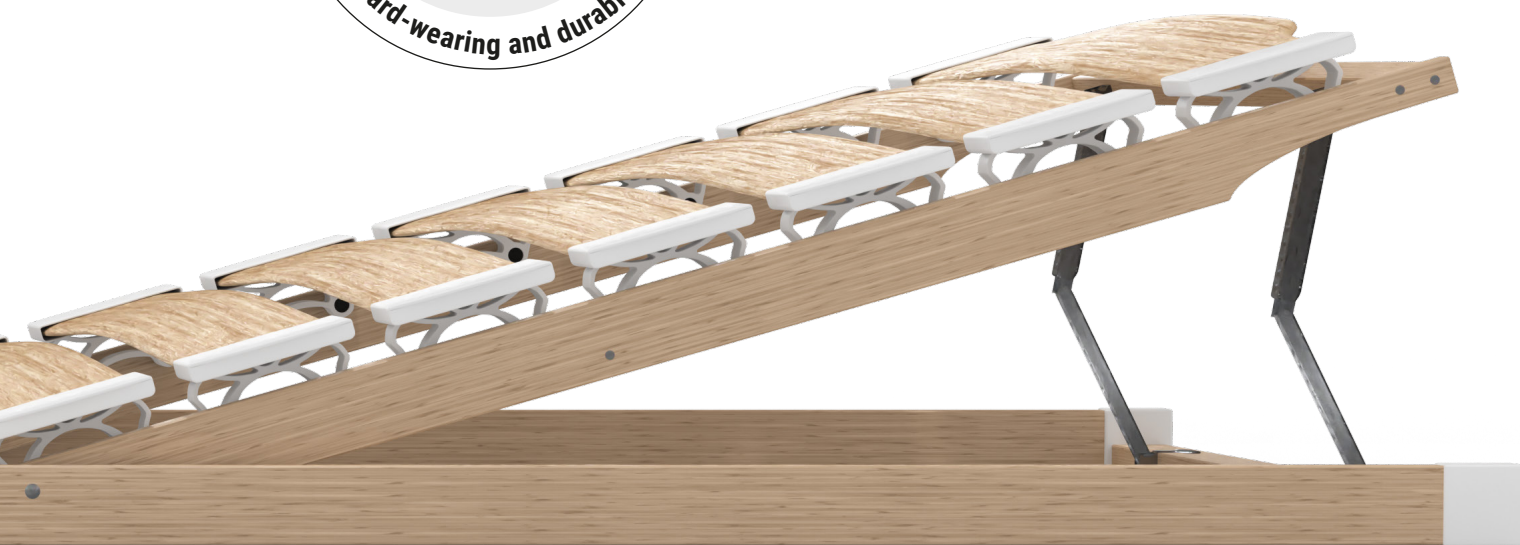
Excluded from the warranty are defects that have arisen due to improper use by the customer, i.e. sawing, drilling, nicks, scratches and soiling that occurred after delivery. Furthermore, the warranty does not cover any concomitant or consequential damage. The warranty therefore does not apply to damage caused by incorrect assembly, handling or care. The warranty only applies to private use and indoor use. The warranty does not apply if products have been used outdoors or in a damp environment. Mould growth is excluded from the warranty and is not accepted as a reason for complaint. The repair or replacement of the defective product does not trigger a new warranty period.

Warranty handle

1. Please use our complaint form. You can request it from our customer service (customercare@bett1.de) or download it directly from our website: <http://en.bett1.de/complaint-form.pdf>

Please send us the complaint form by email, post or fax to our customer service and complain about the damage of your product.

2. We will then organise the collection of the goods free of charge or the dispatch of the corresponding spare parts, subject to reservation (see point 3).
3. We will subsequently examine the returned products and decide whether a warranty claim exists in this case.



We are mattress.

bett1.de GmbH
Tauentzienstraße 11
10789 Berlin

Fon +49 30 7673172-72
Fax +49 30 7673172-73
E-Mail customercare@bett1.de