

FIND YOUR FUN AT THE IOWA STATE FAIR



AUG 11-21 2022

IowaStateFair

**NOTHING
COMPARES**

800.545.FAIR  IOWASTATEFAIR.ORG

Iowa State Fair Police



- **“See Something Say Something”**
 - *If you observe something that is illegal, disruptive, dangerous, suspicious or hazardous, contact ISF Public Safety @
515-262-3111 ext. 311 -State Fair Phones
515-262-3931 –Program into personal cell phones*
- **Do not engage/debate with protestors – call police**
- Wristbands for children are located at all the volunteer booths, Hall of Law ISP Booth, ISFPD Building and Star 102.5 Booth

FIND YOUR FUN

AUG 11-21 2022



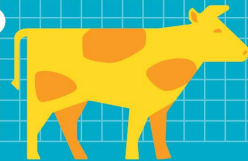
DM Fire Suppression and Medical Aid

- DMFD: Will staff for EMS, Fire, Ambulance –
- *First Aid: Hy-Vee First Aid Station and the Horner Service Center*
- *Fire Command Post staged west of the DNR Fence.*
- *3 Ambulances staged around the grounds*
- *1 Ambulance on location during Outdoor Arena Events*



FIND YOUR FUN

AUG 11-21 2022



Public Transportation

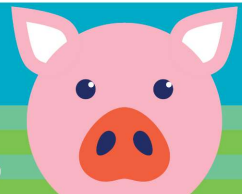


- **Transit Hub - Gate 10**
 - SE Polk School
 - Center St.
 - State Capitol
- **Taxi, Uber, Lyft – Gate 8**

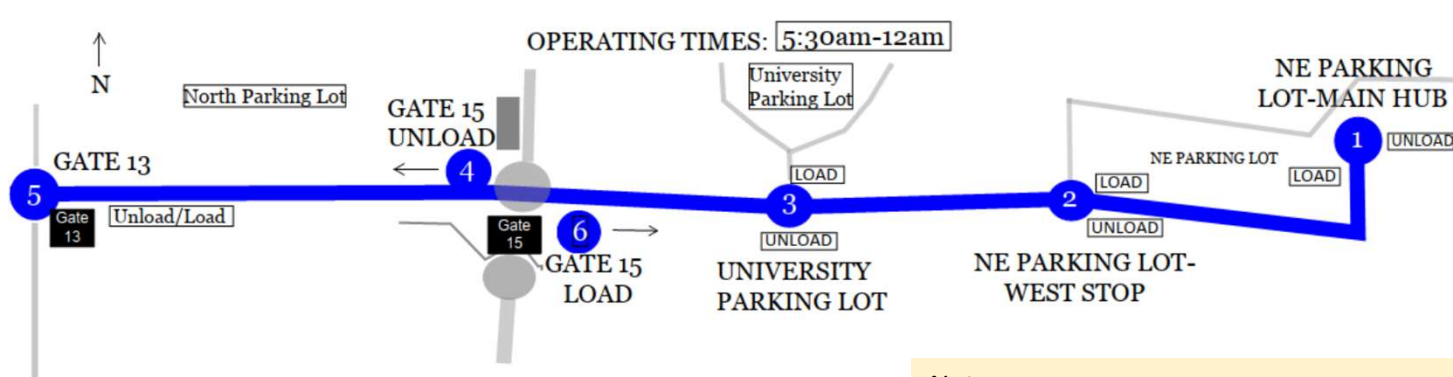


FIND YOUR FUN

AUG 11-21 2022



BLUE LINE PARKING SHUTTLE MAP

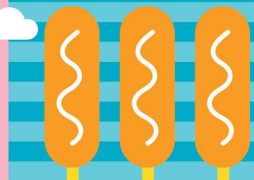


STOP NUMBER	LOCATION
1	NE PARKING LOT-MAIN HUB
2	NE PARKING LOT- WEST
3	UNIVERSITY LOT
4	GATE 15 UNLOAD
5	GATE 13
6	GATE 15 LOAD

Notes:
 Tram signs will mark locations, but for those parking in the NE Lot & Univ Lot pickup will be at points 1, 2, & 3.
 Drop off (return trips) will be at gate 15 (point 4) and gage 13 (point 5).
 Trams begin at 5:30am and will continue thru the day at approx. 15 min intervals until 12:00am.

FIND YOUR FUN

AUG 11-21 2022

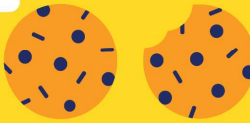


Clearfield Shuttle *(Shuttle will provide an additional stop at Pioneer Hall)*



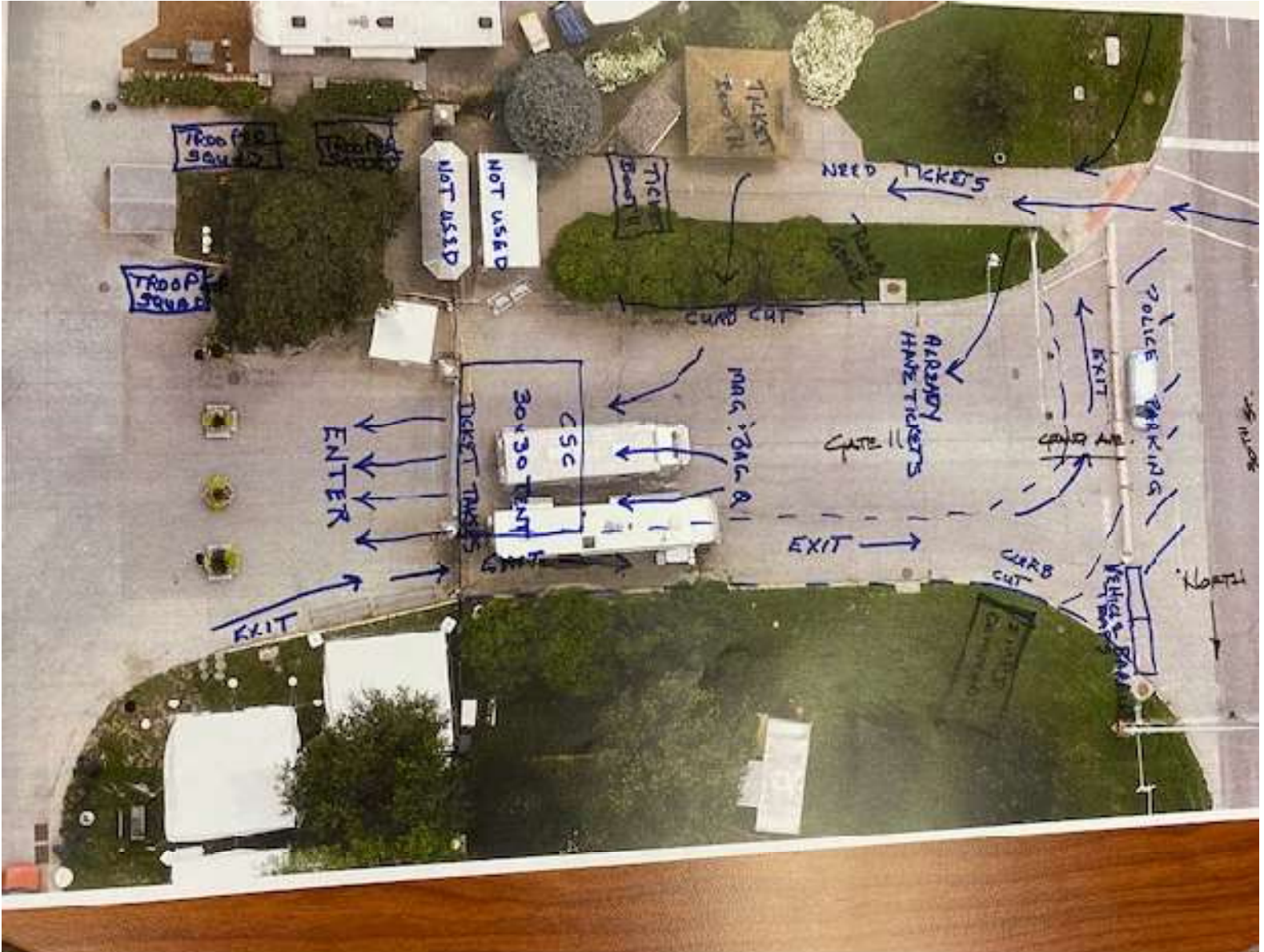
FIND YOUR FUN

AUG 11-21 2022



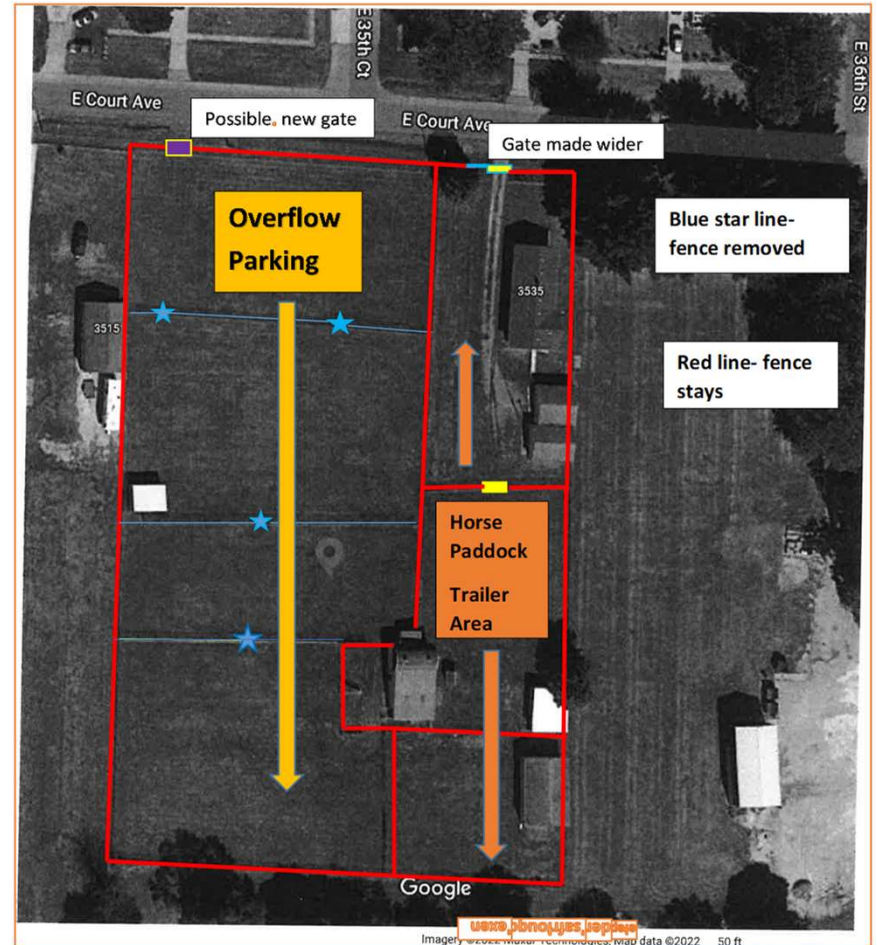
Gate 11

R E D E S I G N



New Parking Overflow Lot

- Located at : E 35th St. and Court Ave.
If Delta (Volunteer Lot) is full –
this is new overflow lot.



FIND YOUR FUN

AUG 11-21 2022



Magnetometers and Bag Searches



- **Open Gate** – Latest Technology in Weapons Detection Systems.
- Starts at all gates no later than 8:00 until Admissions closes for the evening.
- Gate 13 will open at 6:00 and will be the Fiar Employee gate used for early arrivals.
- Signs will be posted at all Admission gates, Grandstand gates and Park and Ride Locations.
- Bag searches will be conducted upon entrance to the Grandstand as well as intermittent bag searches upon entry to the fairgrounds.

FIND YOUR FUN

AUG 11-21 2022

