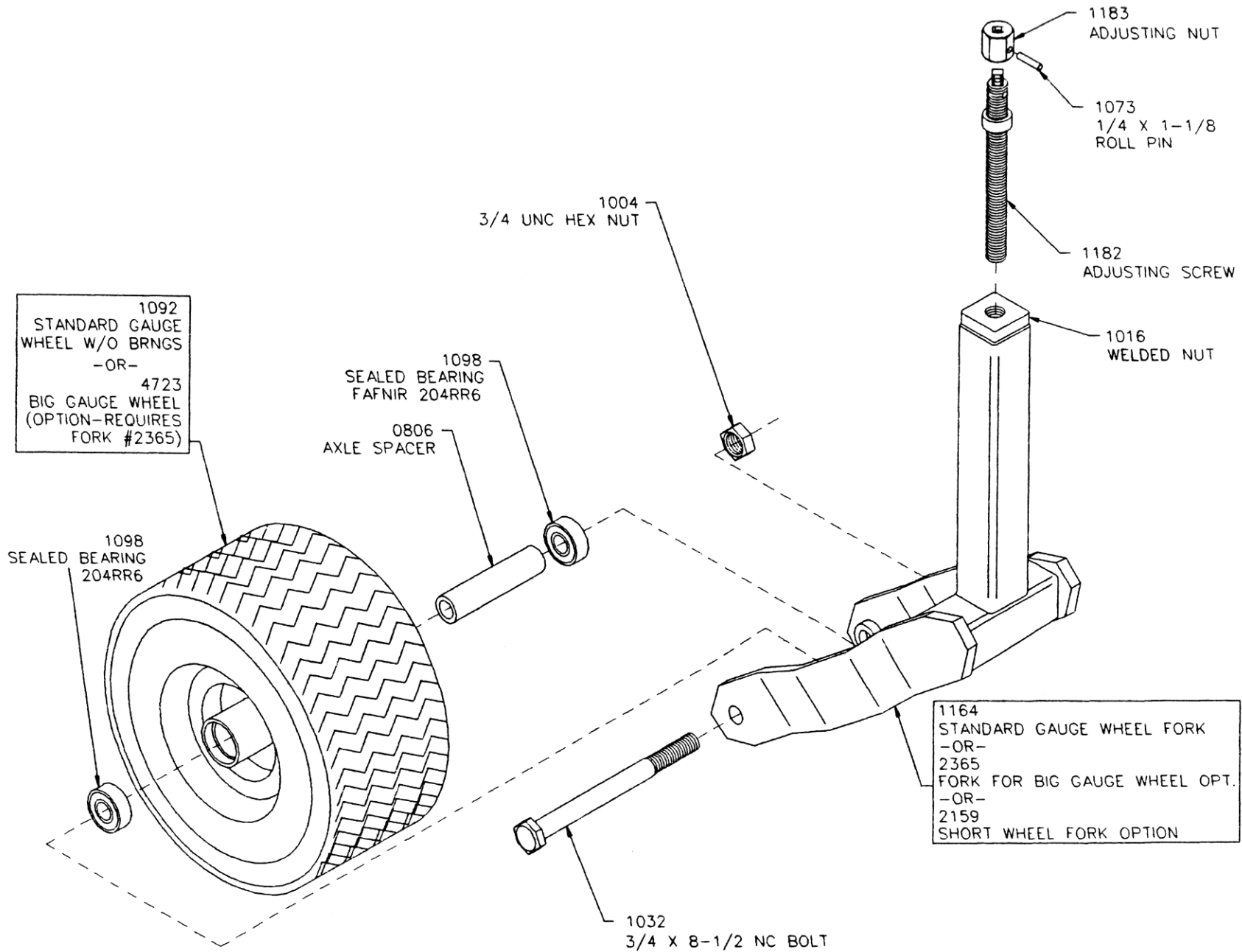
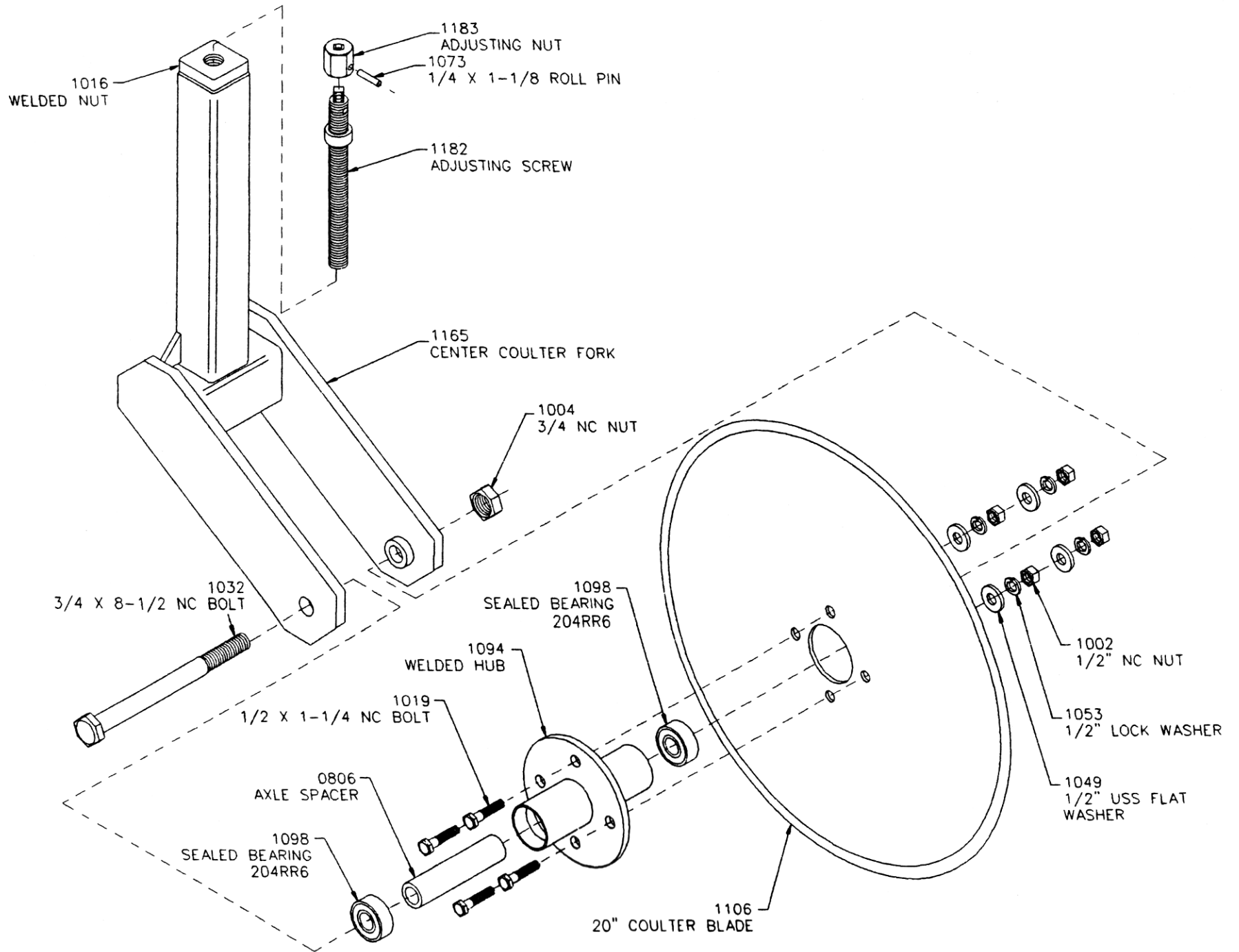


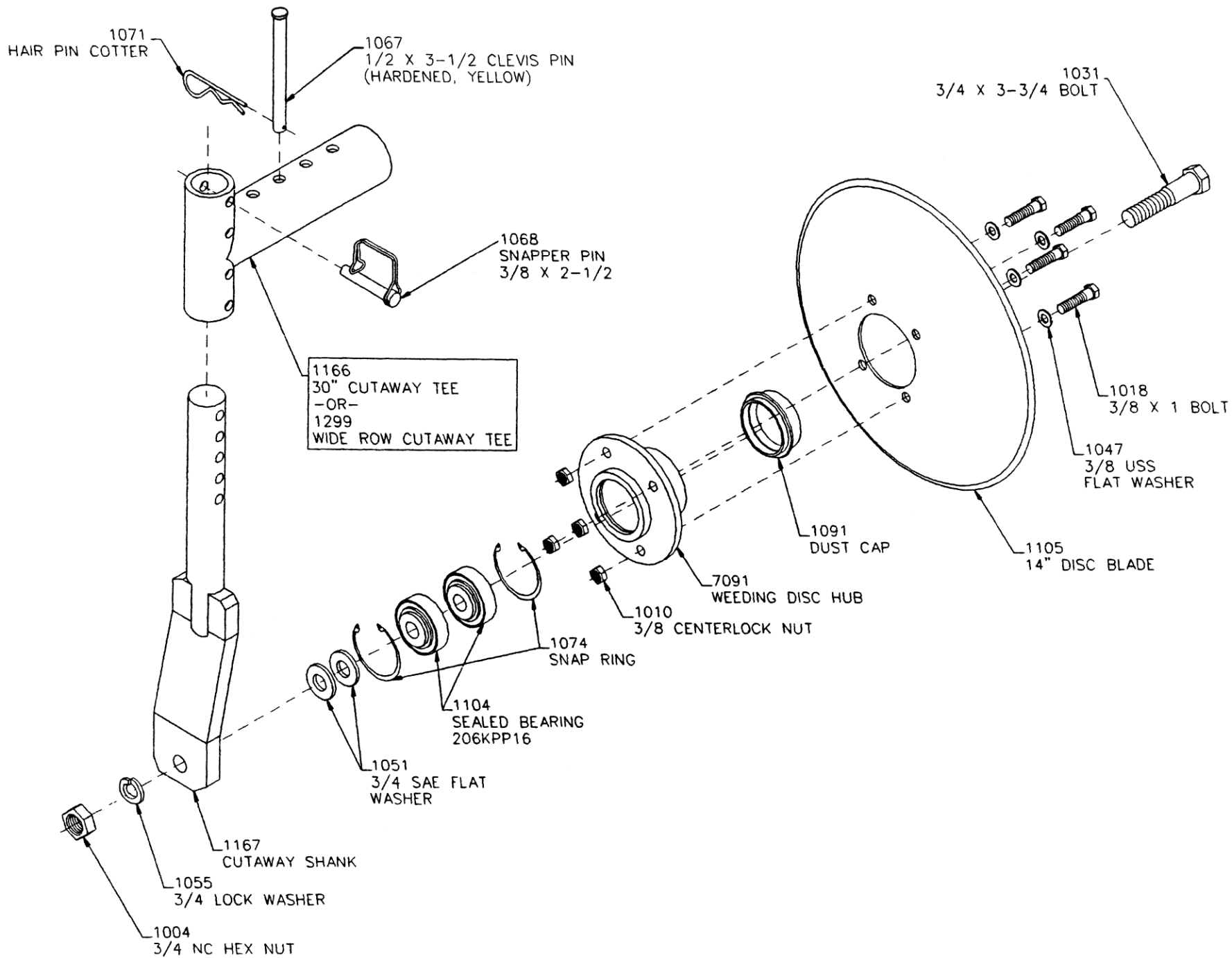
# WHEEL ASSEMBLY



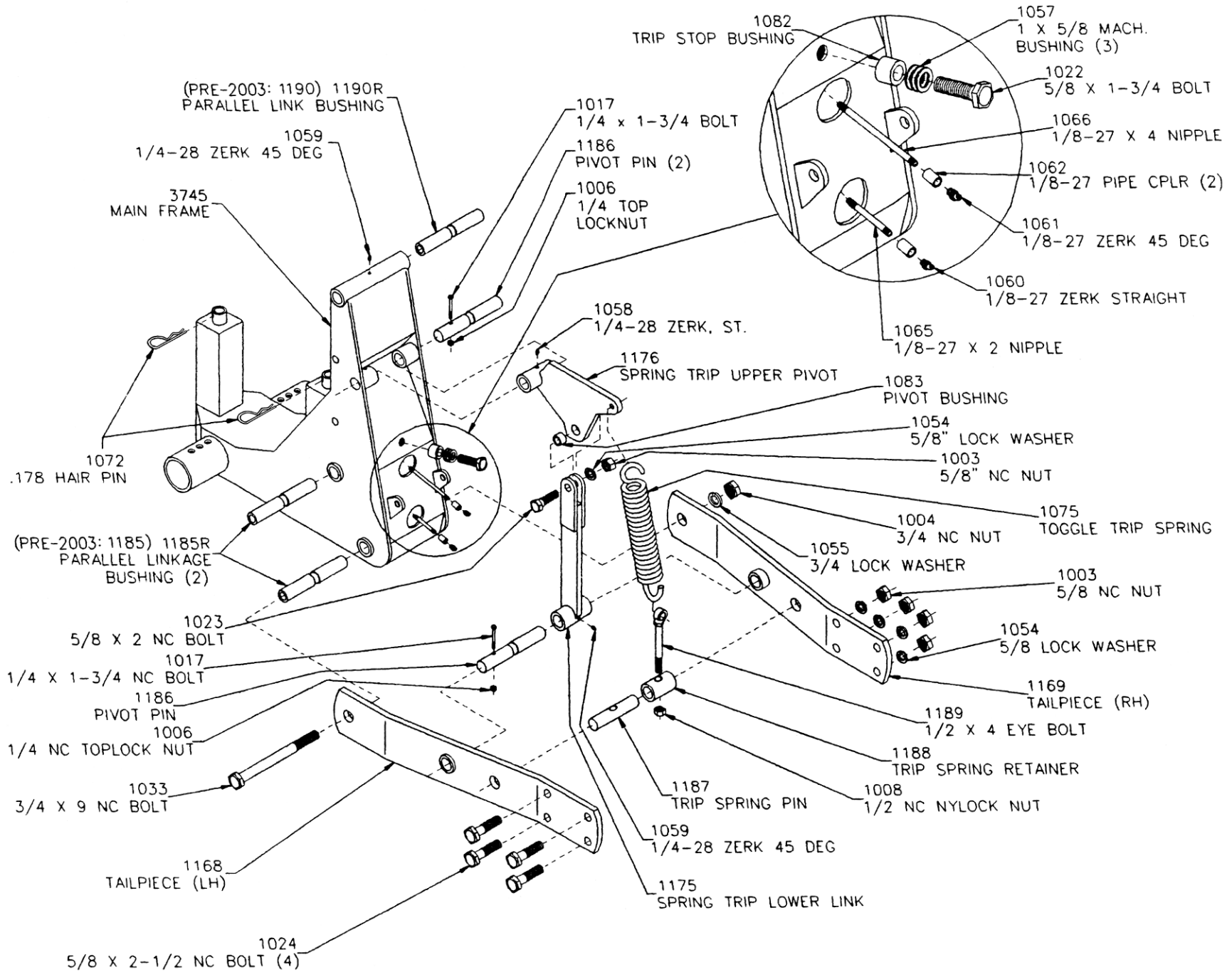
# COULTER ASSEMBLY



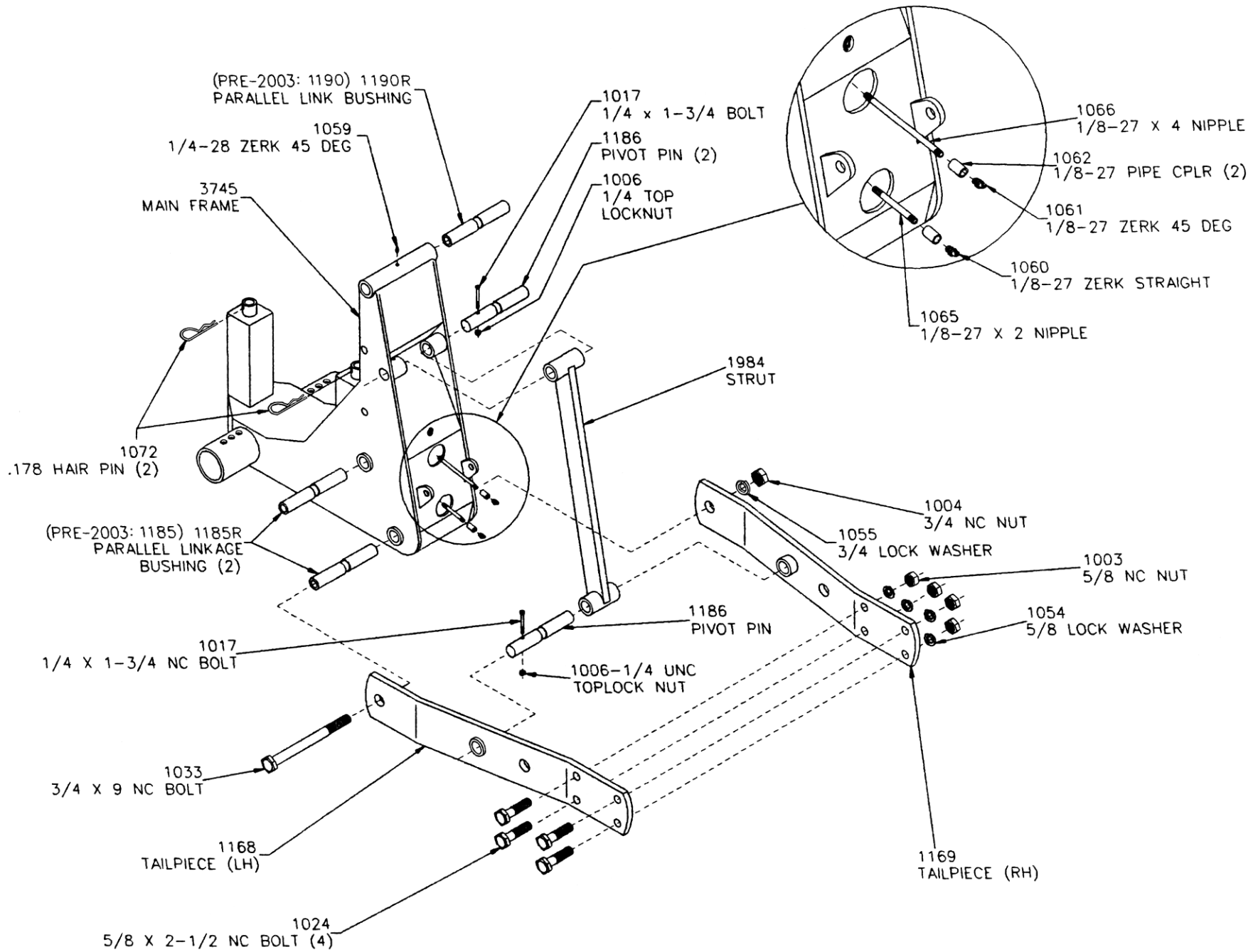
# DISC BLADE ASSEMBLY



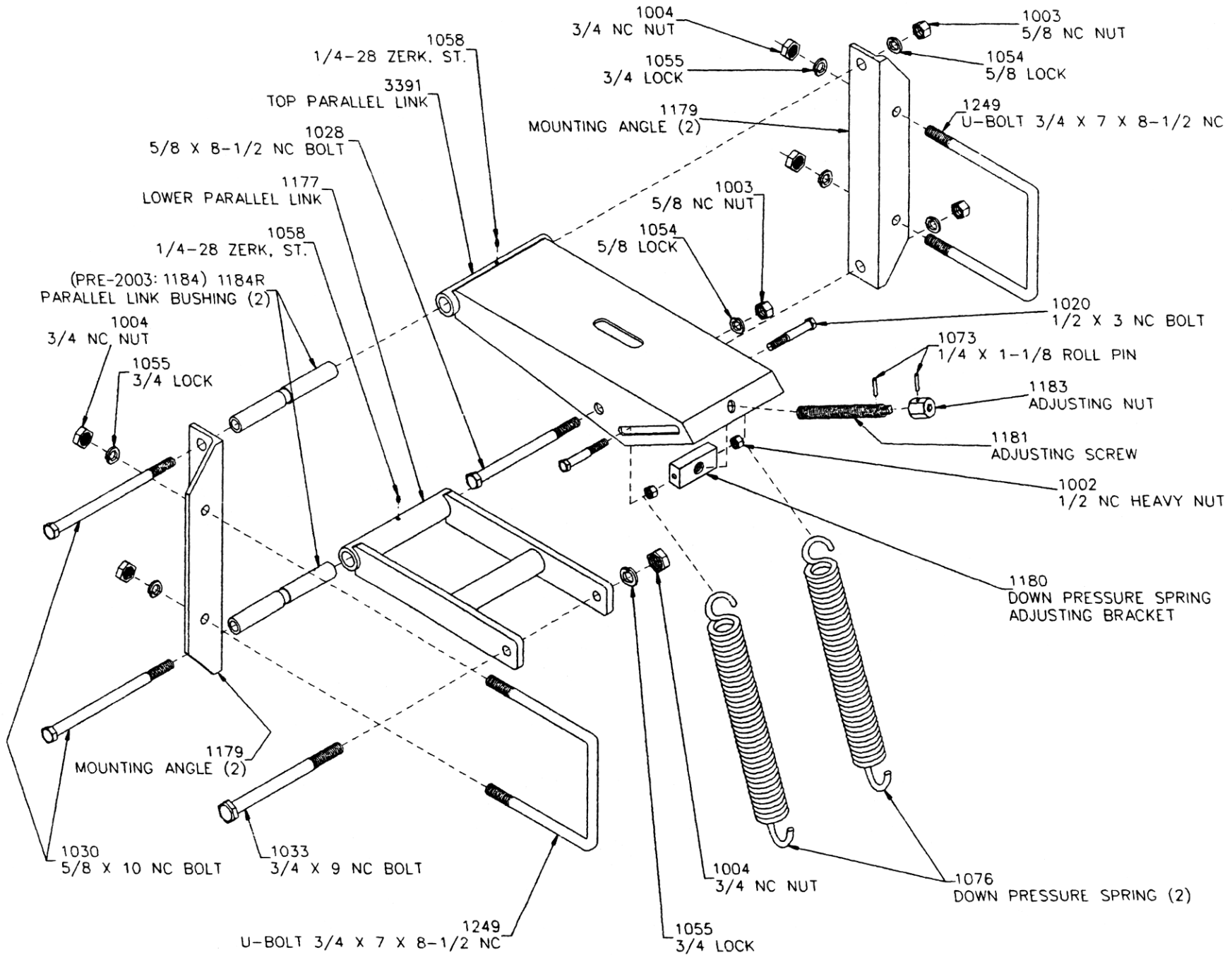
# TRIP LINKAGE ASSEMBLY



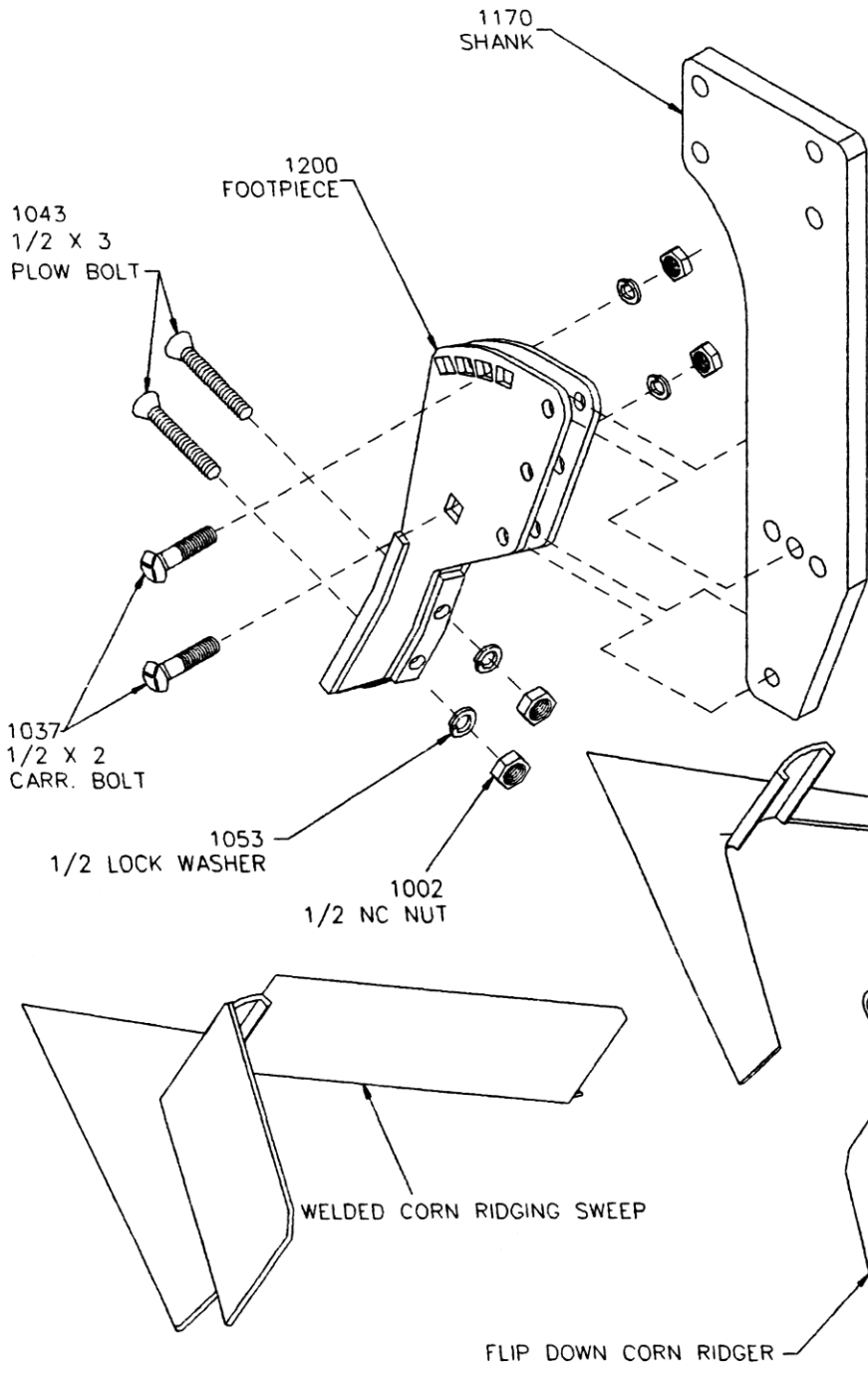
# PARALLEL LINKAGE ASSEMBLY



# TOP LINKAGE FRAME



# RIDGERS AND SWEEPS



FLIP DOWN CORN & BEAN RIDGERS FOR B&H CULTIVATORS	
BEAN, 30"	1965
BEAN, 30" LH	1965L
BEAN, 30" RH	1965R
BEAN, WIDE	1963
BEAN, WIDE LH	1963L
BEAN, WIDE RH	1963R
CORN, 30"	1952
CORN, 30" LH	1952L
CORN, 30" RH	1952R
CORN, WIDE	1960
CORN, WIDE LH	1960L
CORN, WIDE RH	1960R

(NOTE) USE (2) 1/2 X 3-1/2 PLOW BOLTS (#1044) TO ATTACH NH3 KNIFE.

WIDTH	PLAIN SWEEPS	BEAN RIDGING SWEEP	CORN RIDGING SWEEP
---PART NUMBERS---			
14"	1107	----	1117
14" END	1271	----	1282
16"	1108	1118	1120
16" END	1272	1277	1283
18"	1109	1119	1250
18" END	1273	1278	1284
20"	1110	1254	1251
20" END	1274	1279	1285
22"	1111	1255	1252
22" END	1275	1280	1286
24"	1112	1256	1253
24" END	1276	1281	1287
NH3 KNIFE	1113		
NH3 W/ 2 TUBES	1288		

WELDED BEAN RIDGING SWEEP

PLAIN ROWCROP SWEEP

1071-HAIR PIN COTTER

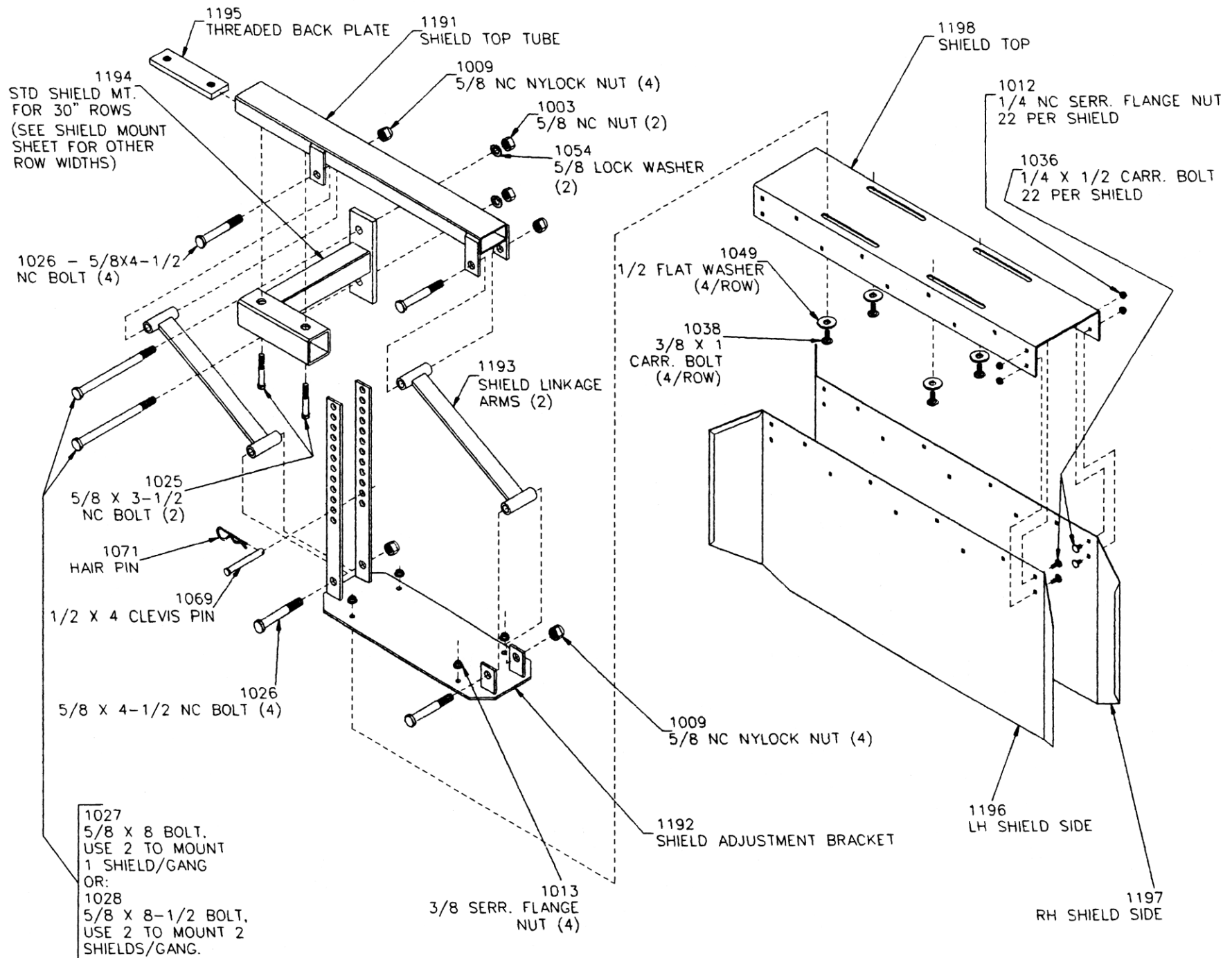
1639-CLEVIS PIN (1/2" X 3-1/4")

WELDED CORN RIDGING SWEEP

FLIP DOWN CORN RIDGER

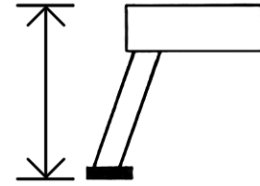
FLIP DOWN BEAN RIDGER

# SHIELD ASSEMBLY





**Shield mount lengths**  
**9100 shield mount tubes**



<b>Description</b>	<b>Part #</b>	<b>Tube length</b>	<b>Total length</b>
<b>22" shield mount</b>	<b>2567</b>	<b>6-11/32"</b>	<b>8-15/16"</b>
<b>30" shield mount</b>	<b>1194</b>	<b>10-5/8"</b>	<b>13"</b>
<b>36" shield mount</b>	<b>2562</b>	<b>13-7/8"</b>	<b>16"</b>
<b>38" shield mount</b>	<b>2563</b>	<b>14-7/8"</b>	<b>16-15/16"</b>
<b>40" shield mount</b>	<b>2564</b>	<b>15-7/8"</b>	<b>17-7/8"</b>
<b>48" shield mount</b>	<b>2611</b>	<b>20-1/4"</b>	<b>22"</b>

**9600 Shield mount tubes**

<b>Description</b>	<b>Part #</b>	<b>Tube length</b>	<b>Total Length</b>
<b>20" shield mount</b>	<b>2568</b>	<b>7-9/32"</b>	<b>9-13/16"</b>
<b>22" shield mount</b>	<b>2569</b>	<b>8-11/32"</b>	<b>10-13/16"</b>
<b>24" shield mount</b>	<b>2570</b>	<b>9-13/32"</b>	<b>11-13/16"</b>
<b>30" shield mount</b>	<b>2561</b>	<b>12-5/8</b>	<b>14-7/8"</b>
<b>36" shield mount</b>	<b>2564</b>	<b>15-7/8"</b>	<b>17-7/8"</b>
<b>38" shield mount</b>	<b>2565</b>	<b>16-29/32"</b>	<b>18-27/32"</b>

# MOUNTING FRAME

