



<b>1 Delivery Checklist .....</b>	<b>5</b>
<b>2 Warranty Registration Form.....</b>	<b>7</b>
<b>3 Contact Information .....</b>	<b>9</b>
<b>4 Safety Considerations .....</b>	<b>9</b>
4.1 Training .....	9
4.2 Preparation.....	9
4.3 Operation.....	9
4.4 Maintenance and storage.....	10
<b>5 Serial Number and Model Identification.....</b>	<b>11</b>
<b>6 Machine Operation.....</b>	<b>11</b>
6.2 Filling The Fuel Tank.....	11
6.3 Motion Control Levers .....	12
6.4 Parking Brake.....	13
6.5 PTO Engagement Switch .....	13
6.6 Choke Control .....	13
6.7 Throttle Control.....	14
6.8 Ignition Switch .....	14
6.9 Fuel Gauge / Hour Meter.....	14
6.10 Adjusting Seat and Armrests.....	14
6.11 Setting Mower Deck Cutting Height .....	14
6.12 Cold Engine Starting Procedure.....	14
6.13 Warm Engine Starting Procedure.....	15
6.14 PTO / Blades Operation .....	15
6.15 Deck Deflector .....	15
6.16 Stopping PTO.....	15
6.17 Shutting Down Engine.....	15
<b>7 Service and Maintenance Procedures.....</b>	<b>16</b>
7.1 Check Seat Safety Switch Operation – Check Daily .....	16
7.2 Check Engine Oil Level – Check Daily – .....	16
7.3 Check Mower Blades .....	16
7.4 Air Filter Inspect/Clean .....	17
7.5 Engine Oil / Filter Change .....	17
7.6 Check Hydraulic Oil Level .....	18
7.7 Check Tire Pressure – .....	18
7.8 Check deck drive belt tension .....	18
7.9 Lubricate Control Levers – .....	19
7.10 Grease Deck lift pivots – .....	20
7.11 Grease Front Wheel Axle Bearings – .....	20
7.12 Check pump drive belt – .....	20
7.13 Air Filter Replace.....	21
7.14 Spark Plugs Check/Adjust.....	21
7.15 Check / Adjust Valve Clearances .....	22
7.16 Fuel filter change – .....	22
7.17 Change Hydraulic Filter.....	22
7.18 Change Hydraulic Oil and Filter .....	22
<b>8 Service &amp; Adjustments Perform as Needed .....</b>	<b>23</b>
8.1 Adjusting throttle cable .....	23
8.2 Adjusting Choke Cable.....	23
8.3 Deck adjustments – .....	24
8.4 Transmission Neutral Setting .....	25
8.5 Deck Belt Replacement – .....	27
<b>9 Fuel and Lubricant Recommendations .....</b>	<b>27</b>

9.1	Gasoline Recommendations .....	27
9.2	Oxygenated Fuels .....	27
9.3	Fuel Stabilizer / Conditioner .....	28
9.4	Engine Oil Recommendation.....	28
9.5	Hydraulic Oil Recommendation.....	28
<b>10</b>	<b>Specifications .....</b>	<b>28</b>
10.1	Engine Specs .....	28
10.2	Hydrostatic System Specs .....	28
10.3	Fuel Tank Capacity .....	29
<b>11</b>	<b>Spare Parts Listing.....</b>	<b>29</b>
<b>12</b>	<b>Service Record .....</b>	<b>31</b>
<b>13</b>	<b>Warranty Information .....</b>	<b>32</b>
13.2	Warranty Return Procedure .....	32
<b>14</b>	<b>Parts Drawings .....</b>	<b>34</b>

## 1 Delivery Checklist

- 1.1.1 Before you, the owner or primary operator use this machine, it is recommended that you go through this checklist so that you understand some of the most important operating procedures with this machine.
- 1.1.2 \_\_\_\_\_ Understand layout of the owner's manual
- 1.1.3 \_\_\_\_\_ Read and understand the "Safety Considerations" section of manual
- 1.1.4 \_\_\_\_\_ Record engine and mower serial numbers in space provided
- 1.1.5 \_\_\_\_\_ Checking Engine Oil
- 1.1.6 \_\_\_\_\_ Checking Hydro Oil
- 1.1.7 \_\_\_\_\_ Filling Fuel Tank
- 1.1.8 \_\_\_\_\_ Seat and Armrest Adjustments
- 1.1.9 \_\_\_\_\_ Motion Control Levers and Parking Brake Operation
- 1.1.10 \_\_\_\_\_ Engine Controls – Throttle/Choke/Ignition Switch
- 1.1.11 \_\_\_\_\_ Fuel Gauge / Hour Meter
- 1.1.12 \_\_\_\_\_ Setting Deck Height
- 1.1.13 \_\_\_\_\_ Cold Engine Start Procedure
- 1.1.14 \_\_\_\_\_ Warm Engine Start Procedure
- 1.1.15 \_\_\_\_\_ Air Filter Cleaning
- 1.1.16 \_\_\_\_\_ Deck Deflector
- 1.1.17 \_\_\_\_\_ PTO / Starting and Stopping Blades
- 1.1.18 \_\_\_\_\_ Shutting Down Engine
- 1.1.19 \_\_\_\_\_ Fill Out Warranty Registration (next page)–

Return to:

B&H Manufacturing, Inc.  
141 East County Rd 34  
Jackson, Minnesota 56143

- 1.1.20 \_\_\_\_\_ Sign off on completion.
- 1.1.21 \_\_\_\_\_ Dealer / Distributor
- 1.1.22 \_\_\_\_\_ Owner / Operator
- 1.1.23 \_\_\_\_\_ Date



**2    Warranty Registration Form**

2.1.1    Please take the time to send this information in to us. It is very important for us to have a record of where our products are and who is operating them. It allows us to make contact with you, the user, in the event of any service or warranty issues that may arrive in the future.

Name \_\_\_\_\_

Address \_\_\_\_\_

City, State, Zip \_\_\_\_\_

Phone \_\_\_\_\_

Email \_\_\_\_\_

Mower Serial Number \_\_\_\_\_

Date Purchased \_\_\_\_\_

Dealer Name \_\_\_\_\_

Please add any additional comments here \_\_\_\_\_

\_\_\_\_\_

\_\_\_\_\_

\_\_\_\_\_

\_\_\_\_\_

Please send completed form to:  
B & H Manufacturing, Inc.  
141 East County Rd 34  
Jackson, Minnesota 56143

507-847-2802



CONGRATULATIONS on the purchase of your Jazzer Mower. This product has been carefully designed and manufactured to give you a maximum amount of dependability and years of trouble-free operation. This manual contains operating, maintenance, adjustment, and safety instructions for your Jazzer mower.

### **3 Contact Information**

B&H Manufacturing Inc.  
141 E County Rd 34  
Jackson, MN 56143

Telephone: (800) 240-3288 or (507) 847-2802

Fax: (507) 847-4655

Website: [www.bhmfg.com](http://www.bhmfg.com) or [www.jazzermower.com](http://www.jazzermower.com)

E-Mail: [jazzermowers@bhmfg.com](mailto:jazzermowers@bhmfg.com)

### **4 Safety Considerations**

#### **4.1 Training**

- 4.1.1 Read the Operator's Manual and other training material. If the operator(s) or mechanic(s) cannot read English it is the owner's responsibility to explain this material to them.
- 4.1.2 Become familiar with the safe operation of the equipment, operator controls, and safety signs.
- 4.1.3 All operators and mechanics should be trained. The owner is responsible for training the users.
- 4.1.4 Never let children or untrained people operate or service the equipment. Local regulations may restrict the age of the operator.
- 4.1.5 The owner/user can prevent and is responsible for accidents or injuries occurring to themselves, other people or property.

#### **4.2 Preparation**

- 4.2.1 Evaluate the terrain to determine what accessories and attachments are needed to properly and safely perform the job. Only use accessories and attachments approved by the manufacturer.
- 4.2.2 Wear appropriate clothing including hard hat, safety glasses and hearing protection. Long hair, loose clothing or jewelry may get tangled in moving parts.
- 4.2.3 Inspect the area where the equipment is to be used and remove all objects such as rocks, toys and wire which can be thrown by the machine
- 4.2.4 Use extra care when handling gasoline and other fuels. They are flammable and vapors are explosive.
- 4.2.5 Use only an approved container
- 4.2.6 Never remove gas cap or add fuel when engine is running. Do not smoke.
- 4.2.7 Never refuel or drain the machine indoors.
- 4.2.8 Check that operator's presence controls, safety switches and shields are attached and functioning properly.
- 4.2.9 Do not operate unless they are functioning properly.

#### **4.3 Operation**

- 4.3.1 Never run an engine in an enclosed area.
- 4.3.2 Only operate in good light, keeping away from holes and hidden hazards.

- 4.3.3 Be sure all drives are in neutral and parking brake is engaged before starting engine. Only start engine from the operator's position. Use seat belts if provided.
- 4.3.4 Be sure of your footing while using pedestrian controlled equipment, especially when backing up. Walk, don't run. Never operate on wet grass. Reduced footing could cause slipping.
- 4.3.5 Slow down and use extra care on hillsides. Be sure to travel in the recommended direction on hillsides. Turf conditions can affect the machine's stability. Use caution while operating near drop-offs.
- 4.3.6 Slow down and use caution when making turns and when changing directions on slopes.
- 4.3.7 Never raise deck with the blades running.
- 4.3.8 Never operate with the PTO shield, or other guards not securely in place. Be sure all interlocks are attached, adjusted properly, and functioning properly.
- 4.3.9 Never operate with the discharge deflector raised, removed or altered, unless using a grass catcher.
- 4.3.10 Do not change the engine governor setting or over speed the engine.
- 4.3.11 Stop on level ground, lower implements, disengage drives, engage parking brake (if provided), shut off engine before leaving the operator's position for any reason including emptying the catchers or unclogging the chute.
- 4.3.12 Stop equipment and inspect blades after striking objects or if an abnormal vibration occurs. Make necessary repairs before resuming operations.
- 4.3.13 Keep hands and feet away from the cutting units.
- 4.3.14 Look behind and down before backing up to be sure of a clear path.
- 4.3.15 Never carry passengers and keep pets and bystanders away.
- 4.3.16 Slow down and use caution when making turns and crossing roads and sidewalks. Stop blades if not mowing.
- 4.3.17 Be aware of the mower discharge direction and do not point it at anyone.
- 4.3.18 Do not operate the mower under the influence of alcohol or drugs.
- 4.3.19 Use care when loading or unloading the machine into a trailer or truck.
- 4.3.20 Use care when approaching blind corners, shrubs, trees, or other objects that may obscure vision.

#### **4.4 Maintenance and storage**

- 4.4.1 Disengage drives, lower implement, set parking brake, stop engine and remove key or disconnect spark plug wire. Wait for all movement to stop before adjusting, cleaning or repairing.
- 4.4.2 Clean grass and debris from cutting units, drives, mufflers, and engine to help prevent fires. Clean up oil or fuel spillage.
- 4.4.3 Let engine cool before storing and do not store near flame.
- 4.4.4 Shut off fuel while storing or transporting. Do not store fuel near flames or drain indoors.
- 4.4.5 Park machine on level ground. Never allow untrained personnel to service machine.
- 4.4.6 Use jack stands to support components when required.
- 4.4.7 Carefully release pressure from components with stored energy.
- 4.4.8 Disconnect battery or remove spark plug wire before making any repairs. Disconnect the negative terminal first and the positive last. Reconnect positive first and negative last.
- 4.4.9 Use care when checking blades. Wrap the blade(s) or wear gloves, and use caution when servicing them. Only replace blades. Never straighten or weld them.
- 4.4.10 Keep hands and feet away from moving parts. If possible, do not make adjustments with the engine running.
- 4.4.11 Charge batteries in an open well ventilated area, away from spark and flames. Unplug charger before connecting or disconnecting from battery. Wear protective clothing and use insulated tools.
- 4.4.12 Keep all parts in good working condition and all hardware tightened. Replace all worn or damaged decals.

## 5 Serial Number and Model Identification

- 5.1.1 The serial number tag can be found at the RH rear of the mower at the front of the engine compartment.

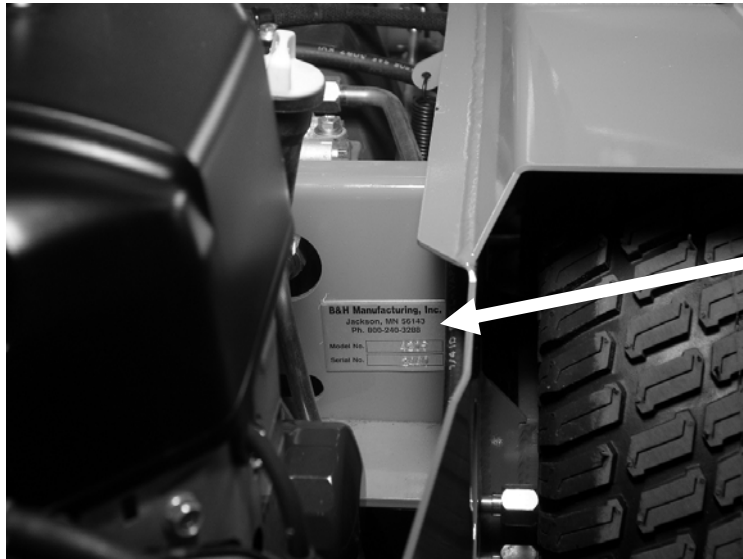


Figure 1

- 5.1.2 The engine serial number can be on the LH side of the engine as shown below.



Figure 2

- 5.1.3 Record serial numbers here for future reference.

- 5.1.4 Mower Serial Number \_\_\_\_\_

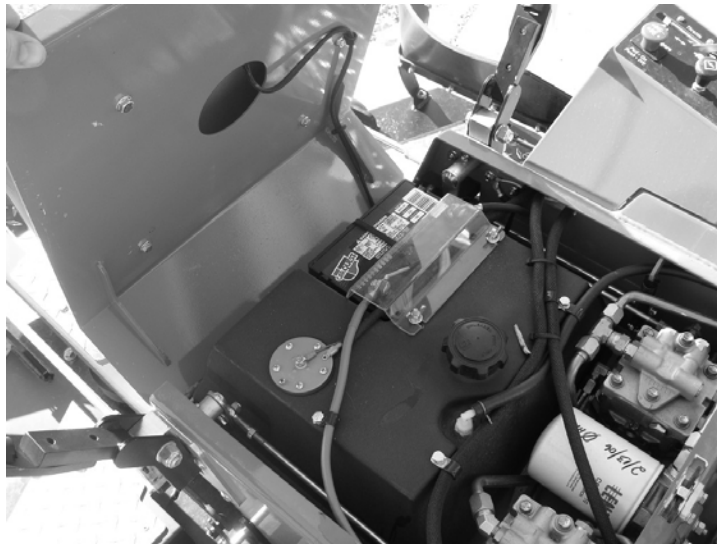
- 5.1.5 Engine Serial Number \_\_\_\_\_

## 6 Machine Operation

- 6.1.1 Left Side of machine is determined by sitting forward in the seat

### 6.2 Filling The Fuel Tank

- 6.2.1 Shut the engine off and set parking brakes.  
6.2.2 Unlatch seat and tip forward to access the fuel tank.



### 6.3 Motion Control Levers

- 6.3.1 Levers are in the operating position when they are as shown below. Left hand lever controls the speed and direction of the LH drive wheel. Right hand lever controls the speed and direction of the RH drive wheel.



- 6.3.2 Moving both levers forward together causes mower to travel forward in a straight line. Moving both levers rearward together causes the mower to travel in reverse in a straight line.
- 6.3.3 To turn left while moving forward, pull back slightly on the LH lever. To turn right while moving forward, pull back slightly on the RH lever.
- 6.3.4 To make a zero radius turn, move one lever slightly ahead of neutral and the other lever slightly behind neutral center position.

#### 6.4 Parking Brake

- 6.4.1 The parking brake system on the Jazzter is not really a brake, but is actually a pin and cog system that is activated every time the control levers are moved into the center neutral locked position as shown above. It is an automatic system that sets itself when you move the levers out to get off the mower and releases itself when you move the levers back in to start moving. If the mower will not move or sounds like it is straining, simply jog the control levers in the opposite direction to release the pin.



#### 6.5 PTO Engagement Switch

- 6.5.1 Located on RH control panel. Switch is pulled UP ("ON" position) to engage the blades. Switch must be in the DOWN or OFF position in order to start the engine.



Figure 3

#### 6.6 Choke Control

- 6.6.1 Located on RH control panel.
- 6.6.2 Pull choke knob UP or OUT to the choke "ON" position.
- 6.6.3 Push choke knob DOWN or IN the choke "OFF" position.

## 6.7 Throttle Control

- 6.7.1 Located on RH control panel. Move lever forward to increase engine speed.
- 6.7.2 Move lever to the rear to idle position.
- 6.7.3 When mowing the throttle should be in the full forward (fastest) position.

## 6.8 Ignition Switch

- 6.8.1 Located on RH control panel.
- 6.8.2 Three (3) position switch. The first position is OFF, second position is ON or RUN. The third position is the start position.

## 6.9 Fuel Gauge / Hour Meter

- 6.9.1 Located on RH control panel. Digital display indicates amount of fuel remaining. When red light flashes, unit is very low on fuel and should be refueled immediately.
- 6.9.2 The hour meter records time the key is on. Use hour meter to record service intervals.

## 6.10 Adjusting Seat and Armrests

- 6.10.1 The release lever for the fore and aft adjustment is located beneath the front edge of the seat. Release seat then slide the seat forward or back until it is where you want it then lock it into place. Make sure the latch is fully locked so that seat is secure.
- 6.10.2 There are adjusters for armrest height located underneath each armrest. Turning the knob one way raises the armrest and turning the other way lowers it. Setting the armrests at the proper height will assist you in maintaining better control of the machine.

## 6.11 Setting Mower Deck Cutting Height



- 6.11.1 While seated on the seat, push on foot lever to raise deck. Remove pin and move to the desired position. For a 3" cutting height place pin in center hole of the bottom row. Moving the pin forward each hole raises the cutting height 1/4".

## 6.12 Cold Engine Starting Procedure

- 6.12.1 Be sure engine has oil and gas.
- 6.12.2 Pull up on Choke to "ON".
- 6.12.3 Move throttle control about 1/3 of the way forward.
- 6.12.4 Turn key to "START" position and hold until engine starts.
- 6.12.5 If engine fails to start within 5 seconds, release the key, wait at least 10 seconds.

6.12.6 Note: Using the starter for more than 5 seconds at a time can overheat and damage the starter.

6.12.7 Gradually push choke knob in as engine warms up.

### **6.13 Warm Engine Starting Procedure**

6.13.1 Same as above but leave choke in the "OFF" position.

### **6.14 PTO / Blades Operation**

6.14.1 The PTO switch engages the cutting blades. Be certain everyone is clear of the mower deck and the RH discharge area before engaging the PTO.

6.14.2 Operator must be seated before the PTO can be engaged. The motor will kill if the seat switch is not depressed.

6.14.3 Move throttle to halfway position. Pull up on PTO switch to the "ON" position. Then move throttle to full forward "FAST" position.

### **6.15 Deck Deflector**

6.15.1 Deck is equipped with a rubber deck discharge deflector.

6.15.2 Deflector can be pivoted upwards for clearance for storing or transporting.

6.15.3 NEVER mow with the deflector in the UP position.

### **6.16 Stopping PTO**

6.16.1 In an emergency, deck blades can be stopped anytime by pushing down on the PTO switch, also by turning the key switch to "OFF".

6.16.2 Normal operation - move throttle to halfway position. Push down on PTO switch to "OFF" position.

### **6.17 Shutting Down Engine**

6.17.1 In an emergency simply turn key to "OFF".

6.17.2 For normal shutdown, stop machine, turn off PTO, move throttle all the way to SLOW. Turn ignition switch to OFF.

## 7 Service and Maintenance Procedures

Service and Maintenance Procedures	Daily	After First 10 hrs	Every 25 hrs	Every 50 hrs	Every 100 hrs	Every Year or 300 hrs
Check Seat Switch Interlock	X					
Check Engine Oil Level	X					
Check Mower Blades	X					
Clean Underside of Deck	X					
Air Filter Inspect/Clean			X			
Engine Oil / Filter Change		X		X		
Check Hydraulic Oil Level		X		X		
Check Tire Pressure		X		X		
Check/Adjust Deck Belt Tension		X		X		
Lubricate Control Levers				X		
Grease Deck Lift Pivots				X		
Grease Front Wheel Bearings				X		
Check Pump Drive Belt					X	
Air Filter Replace						X
Spark Plugs Check / Adjust					X	
Spark Plugs / Replace						X
Valve Clearance						X
Fuel Filter / Change						X
Change Hydraulic Filter		X				X
Change Hydraulic Oil & Filter						X

### 7.1 Check Seat Safety Switch Operation – Check Daily

- 7.1.1 When raised off the seat, turn key switch to start. Engine **SHOULD NOT CRANK**. If engine cranks, contact your dealer to resolve this problem before using mower.
- 7.1.2 While seated on mower, start engine, then engage PTO. Raise yourself off the seat. **Engine should shut off immediately**. If engine does not shut off, contact your dealer to resolve this problem before using mower.

### 7.2 Check Engine Oil Level – Check Daily –

- 7.2.1 At rear left of mower, unscrew dipstick. Wipe clean. Then, reinsert **WITHOUT** screwing it in. Add oil, if needed to bring up to the full mark.



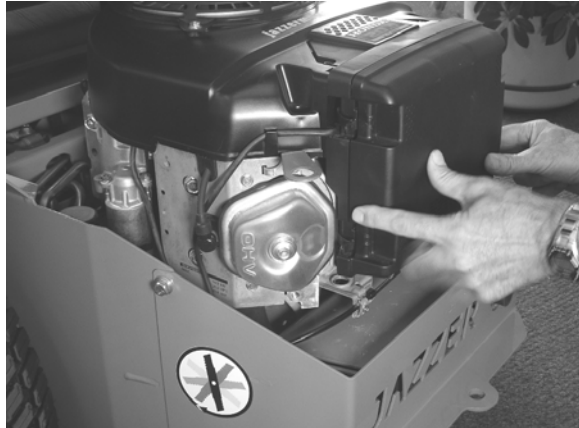
### 7.3 Check Mower Blades

- 7.3.1 Raise front of mower and check condition of mower blades.
- 7.3.2 If blades are not sharp they must be resharpened or replaced.

- 7.3.3 If blades are bent or damaged they should be replaced. Don't attempt to straighten bent blades. It can be dangerous to straighten because it could cause the blades to crack in operation.
- 7.3.4 Clean Underside of Deck
- 7.3.5 While checking conditions of blades, scrape out any accumulated grass clipping from under the mower deck. Mower performance will deteriorate if blades are not in good condition and grass builds up under deck.

#### 7.4 Air Filter Inspect/Clean

- 7.4.1 Release the 4 spring tabs from the air cleaner cover and remove cover.



- 7.4.2 Remove the foam and paper filter elements.
- 7.4.3 Inspect both elements and replace them if they are damaged.
- 7.4.4 Clean the elements if they are to be reused.
- 7.4.5 To clean paper filter element: Tap the filter several times gently on a hard surface, OR blow compressed air (less than 30 psi) through the element from the clean side to the dirty side (front to back). Never try to brush off dirt, brushing will force dirt into the fibers.
- 7.4.6 To clean foam filter element: Wash in warm soapy water, allow to dry thoroughly.
- 7.4.7 Wipe dirt from inside of air cleaner base and cover with a rag. Be careful to prevent dirt from entering the clean area the leads into the carburetor. ***NEVER OPERATE ENGINE WITHOUT BOTH AIR FILTERS IN PLACE – THIS CAN CAUSE SEVERE DAMAGE TO ENGINE.***
- 7.4.8 Replace both elements, Place foam filter in the cover, then reinstall the paper filter element and cover to the engine. Hook the four spring tabs securely.

#### 7.5 Engine Oil / Filter Change

- 7.5.1 Drain used oil while the engine is warm. Warm oil drains quickly and more completely. It is recommended to change filter at each oil change.

- 7.5.2 Place a suitable container under the engine to catch used oil.
- 7.5.3 Remove the oil filler cap / dipstick, drain plug and oil filter. Allow used oil to drain completely.
- 7.5.4 Reinstall drain bolt and tighten securely.
- 7.5.5 Clean the filter mounting base and coat the rubber seal on the new filter with new engine oil.
- 7.5.6 Screw on the new filter by hand until seal contacts filter base, then tighten another 3/4 - 7/8 turn, alternatively tighten to 16 lbf-ft (22Nm).
- 7.5.7 Refill crankcase with new oil (SAE 10W-30 "SJ" rated) 2 qts.
- 7.5.8 Start engine and check for leaks. Stop engine then check oil level. Add oil if needed to bring oil to top of safe mark. (See Item #2 above for proper method to check oil level).

## 7.6 Check Hydraulic Oil Level

- 7.6.1 Be extremely careful with dirt and contamination when you are servicing the hydrostatic system. Contamination is the worst enemy of the hydrostatic system. Clean around dipstick and filters BEFORE removing. Only add oil from a sealed container. Thoroughly clean funnels and anything that will come into contact with the oil. Contamination in the system will void the warranty on the hydrostatic system.
- 7.6.2 Check level when oil is cold.
- 7.6.3 Unscrew dipstick and wipe clean. ***Insert into oil tank without screwing it in.*** If oil shows on the dipstick (approx 1/4-1/2 inch up from the bottom), then the oil level is adequate. If no oil shows on dipstick, then add oil to bring up to the dipstick. The upper mark is a high level mark for when the oil is hot. If oil tank is overfilled, oil will expand and come out of the dipstick / vent when the oil gets hot.

## 7.7 Check Tire Pressure –

- 7.7.1 Inflate all 4 tires to 12 psi. A special low pressure air gauge (available at any auto parts store) should be used to accurately check the pressure.

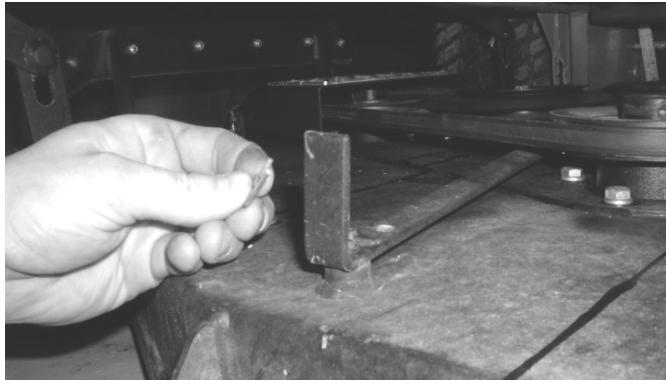
## 7.8 Check deck drive belt tension



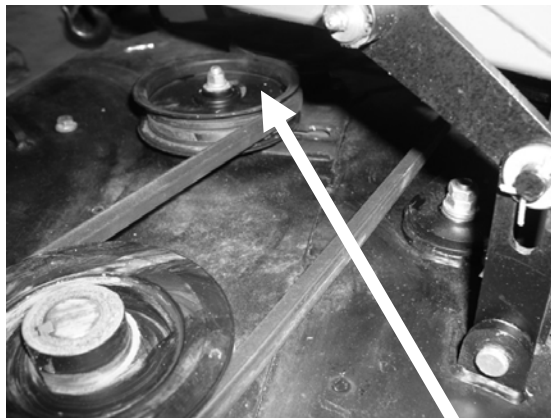
- 7.8.1 Spring for deck belt tension can be found by looking under the RH side of the mower frame.
- 7.8.2 To check belt tension, measure the length of the spring. The body of the spring should measure 3.50" to 3.75".

OR

- 7.8.3 An alternative method is to use a U.S. quarter, to use as a gauge between the coils.



- 7.8.4 If belt tension needs adjusting, first unhook the deck belt tension arm from its stud. There are 2 holes for the arm to hook into. Use the front hole for normal operation. If belt becomes stretched enough that you can't get the proper tension then use the second hole.



- 7.8.5 Go to left side of mower. Loosen the flat idler pulley (use a 9/16" wrench) and move slightly to the rear. Retighten pulley, rehook spring tension arm and recheck spring length. Adjust till body of spring measures 3.50-3.75" or a quarter fits snugly between the coils.

## 7.9 Lubricate Control Levers –

- 7.9.1 Raise seat. Use a grease gun with multipurpose grease. Grease zerks at the



- control arm pivots (2).
- 7.9.2 Use a light "dry lube" type spray lubricant (use a dry lube containing Teflon or "moly") to lube the brake linkage and the control arms. Also lubricate the pivot for the park lock position, where the side plates of the handle mount to the control arm block. Applying a small amount of lube to the tab that actuates the parking lock will make the entire park lock system work more smoothly.

- 7.9.3 Use (2) 3/4" wrenches to adjust the amount of tension on control lever arm mounts so the levers have the proper amount of resistance. (This is a personal preference on how stiff to make the arms to move back and forth from the locked position to the travel position).

#### **7.10 Grease Deck lift pivots –**

- 7.10.1 Use a grease gun with multipurpose grease. Grease zerks at the rear deck lift pivots (2).



#### **7.11 Grease Front Wheel Axle Bearings –**

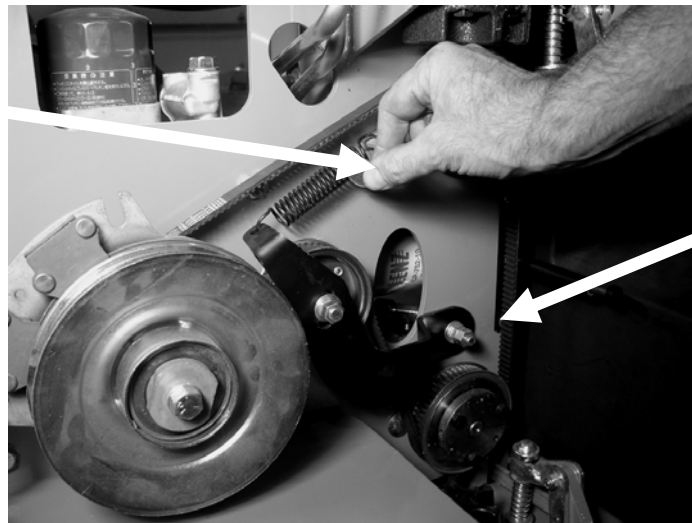
- 7.11.1 Use a grease gun with multipurpose grease. Grease (2) zerks at the front wheels.



#### **7.12 Check pump drive belt –**

- 7.12.1 Raise rear of mower to access pump drive belt. Use blocks as necessary to support mower safely.
- 7.12.2 Pump belt idler arm should be free to move with firm hand force. If arm is sticky or stiff, remove arm and coat the mounting surfaces with anti-seize lubricate. Reassemble and adjust tension at pivot bolt tension.
- 7.12.3 Measure length of the spring – Proper length is 4-1/4" inside spring hooks, OR length of coils should measure 3-1/4".

- 7.12.4 Another method to check tension – A quarter (\$.25 US coin) should just fit between the coils in the spring.



- 7.12.5 Adjust position of idler to achieve proper belt tension. Use (2) 9/16" wrenches to move the idler in its adjustment slot..

### 7.13 Air Filter Replace

- 7.13.1 Each year or 300 hours replace paper air filter element. Follow directions from step #5 above.

### 7.14 Spark Plugs Check/Adjust

- 7.14.1 Disconnect spark plug caps. Remove dirt from around spark plug areas. Remove the spark plugs with a 13/16 spark plug wrench.
- 7.14.2 Replace plugs if the electrodes are worn or if insulator is cracked or shipped. Clean with a wire brush if you are going to reuse them.
- 7.14.3 Regap spark plugs to .028"-.031" (.7-.8mm).
- 7.14.4 Reinstall plugs by hand, be careful to avoid cross threading.
- 7.14.5 To reinstall used plugs, tighten 1/8-1/4 turn after the spark plug seats lightly.
- 7.14.6 Replace spark plugs –
- 7.14.7 To install new spark plugs, remove old plugs and gap new plugs according to step #15 above.

- 7.14.8 Thread new spark plugs into engine by hand, then use a 13/16" spark plug wrench and tighten 1/2 turn after the spark plug seats.

### 7.15 Check / Adjust Valve Clearances

- 7.15.1 Honda recommends valve clearance be checked every year or 300 hours. This should be performed by your servicing dealer unless you have the proper tools and are mechanically adept. Refer to Honda shop manual for procedures.
- 7.15.2 (Valve clearances (cold) IN 0.15mm(+)(-)0.02mm, EX 0.20mm (+)(-) 0.02mm).

### 7.16 Fuel filter change –

- 7.16.1 Replace every year or 300 hrs.
- 7.16.2 Air filter and the air filter base must be removed in order to gain access to the fuel filter.
- 7.16.3 Refer to step #5 above to remove air filter cover both filter elements.
- 7.16.4 Remove the (2) 6mm nuts and remove the air cleaner cap.
- 7.16.5 Remove the (2) 5mm special bolts and (2) 6mm flange bolts and remove the air cleaner base.
- 7.16.6 Check fuel filter for water accumulation or sediment. If no contamination is found filter can be replaced. However, it is recommended to replace the filter at this time.
- 7.16.7 Reassemble in reverse order.

### 7.17 Change Hydraulic Filter

- 7.17.1 Place a pan under the hydrostatic oil filter, unscrew oil filter enough so the oil can drain into the oil pan. It is possible to get a little oil on the drive belt at this point. It is recommended to place a small shield over the belt to prevent it from coming into contact with the oil.
- 7.17.2 Allow oil to drain completely
- 7.17.3 Thoroughly clean the drain plug and replace.
- 7.17.4 Apply a thin film of clean oil to oil filter seal.
- 7.17.5 Screw filter on by hand until seal contacts base, then tighten an additional 3/4 turn.
- 7.17.6 Add proper oil to bring up to proper level -

### 7.18 Change Hydraulic Oil and Filter

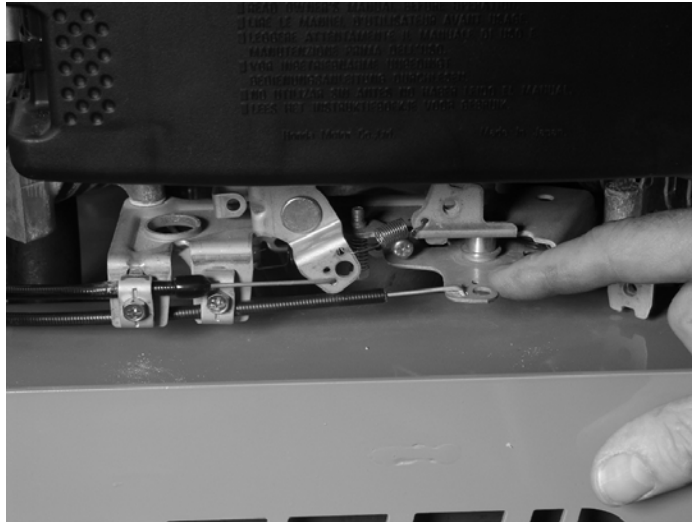
- 7.18.1 Be extremely careful with dirt and contamination when you are servicing the hydrostatic system. Contamination is the worst enemy of the hydrostatic system. Clean around dipstick and filter **BEFORE** removing. Only add oil from a sealed container. Thoroughly clean funnels and anything that will come into contact with the oil. Contamination in the system will void the warranty on the hydrostatic system.
- 7.18.2 Place a pan under the oil tank, remove magnetic oil plug and drain the oil.
- 7.18.3 Place a pan under the hydrostatic oil filter, unscrew oil filter enough so the oil can drain into the oil pan. It is possible to get a little oil on the drive belt at this point. It is recommended to place a small shield over the belt to prevent it from coming into contact with the oil.
- 7.18.4 Allow oil to drain completely
- 7.18.5 Thoroughly clean the drain plug and replace.
- 7.18.6 Apply a thin film of clean oil to oil filter seal.
- 7.18.7 Screw filter on by hand until seal contacts base, then tighten an additional 3/4 turn.
- 7.18.8 Add oil to hydraulic reservoir till oil shows on the dipstick, approx. 7 quarts.
- 7.18.9 To prime system – raise the rear of mower so that the rear wheels can spin freely.

- 7.18.10 Start engine and run at idle. Push both levers full forward and hold for 10 seconds. Then pull both levers fully rearward and hold for ten seconds. Repeat this procedure several times until all air is purged from the system.
- 7.18.11 Lower mower to the ground and check oil level. The oil level should be approx 1/2" on the dipstick without the cap screwed in. Add oil to bring to proper level.
- 7.18.12 Replace dipstick / cap on hydraulic reservoir.

## **8 Service & Adjustments Perform as Needed**

### **8.1 Adjusting throttle cable**

- 8.1.1 If throttle and cable is not properly adjusted, the engine may not be operating at full speed or the throttle may not stay in the fast position.
- 8.1.2 Procedure should be done on a cold engine to prevent any chance of burns from the hot engine.
- 8.1.3 Shut down mower, set park and remove the key.
- 8.1.4 Move throttle lever full forward till it reaches it limiting stop, then back off about 1/8-1/4 inch.
- 8.1.5 Go to rear of mower. Throttle linkage should be fully opened (fast position).



- 8.1.6 Loosen clamp on throttle cable if needed and pull cable tight so throttle is fully open, then retighten clamp.
- 8.1.7 If throttle doesn't hold its position while mowing, then the friction discs on the throttle lever need to be tightened.
- 8.1.8 Remove the cover on the control panel. Use a 7/16" combination wrench and a 7/16" socket to adjust the tension on the throttle pivot.
- 8.1.9 Adjust pinch bolt so that it is tight enough to hold throttle in position.

### **8.2 Adjusting Choke Cable**

- 8.2.1 If choke cable is not properly adjusted, it is possible that either the choke won't fully close or fully open. This will cause either hard starting or rough running or poor fuel economy.
- 8.2.2 When the choke control is pushed all the way in (off), the knob should not contact the base of the choke mounting. There should be about a 1/8" – 1/4" gap as shown below.

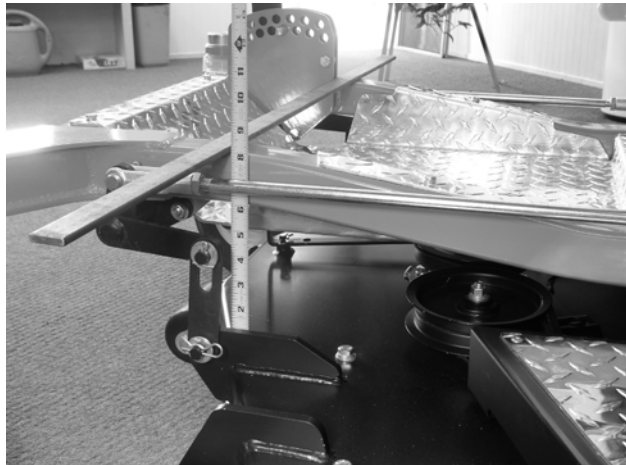


- 8.2.3 If adjustment is needed, go to back of mower. Loosen clamp holding choke cable. Now position choke knob 1/4" up. Go to rear of mower and gently push choke cable to the right (opens choke) and tighten screw on cable when the choke is fully opened.

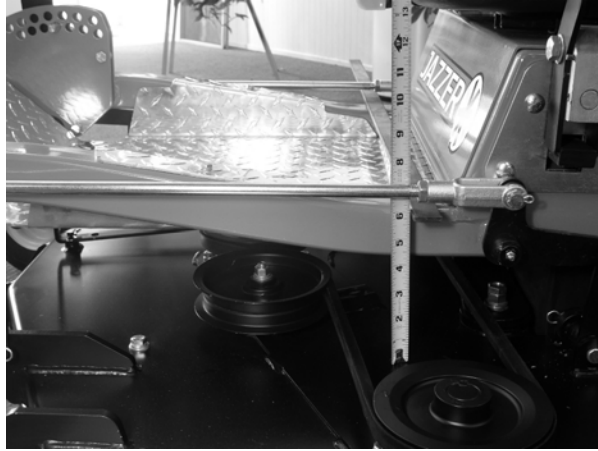


### 8.3 Deck adjustments –

- 8.3.1 The only adjustment necessary on the deck is the front to back leveling.  
8.3.2 Measure from top of frame rail to top of deck as shown below.



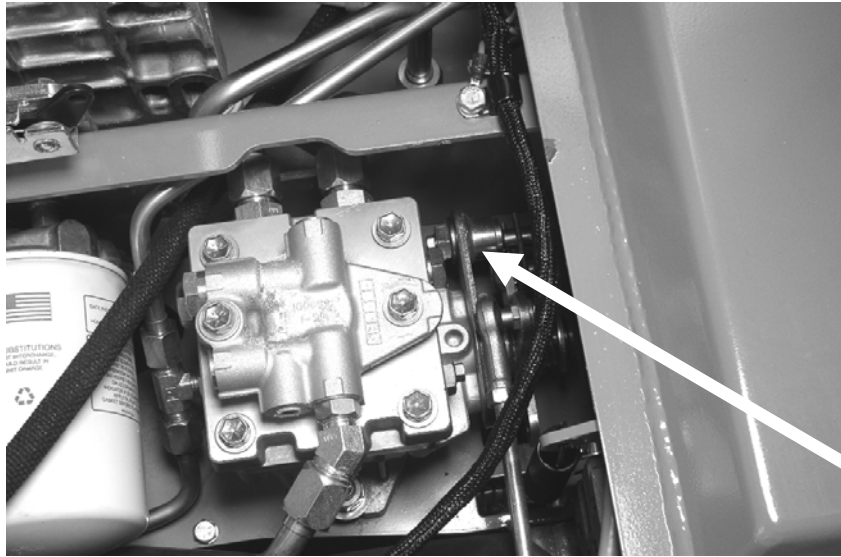
- 8.3.3 The front left and right measurements should be within 1/8" of each other. This should be 2" greater than the measurement at the rear of the deck to the top of the rail.



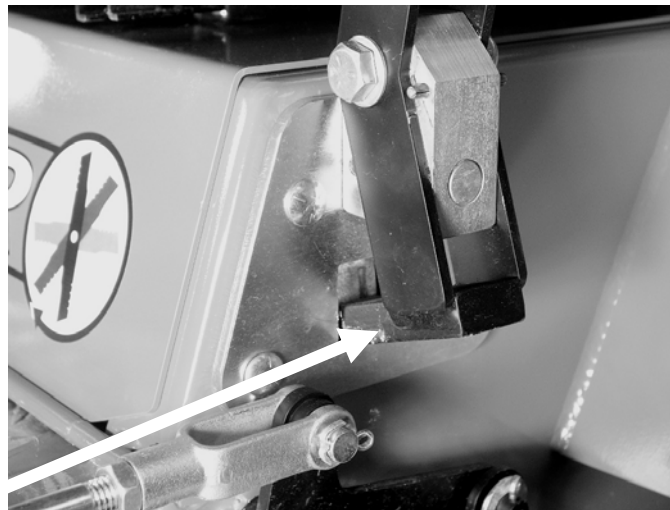
- 8.3.4 If adjustment is needed, remove cotter pin and clevis pin at the front of the lift linkage rods. Shorten or lengthen linkage rod to achieve the proper height.
- 8.3.5 When adjustment is complete, all 4 carrier links should have equal pressure on them.

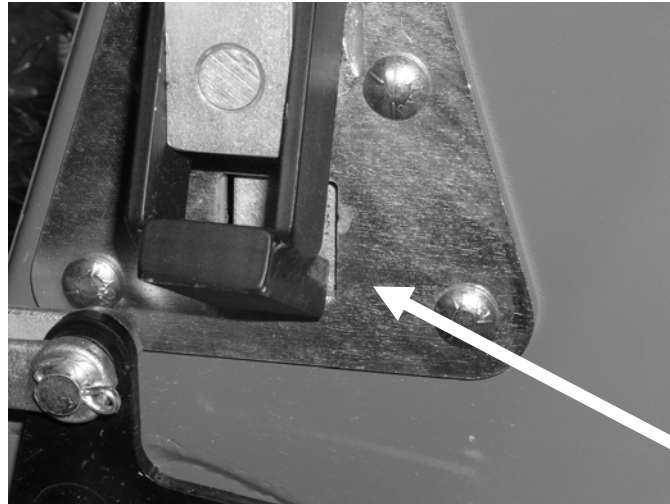
#### **8.4 Transmission Neutral Setting**

- 8.4.1 If mower creeps when levers are in the neutral position (not the locked position) then the neutral position needs to be adjusted. Do the adjustments in this order only.
- 8.4.2 Raise rear of mower slightly off the ground so the rear wheels can turn freely. Control levers should be in the operating position (handles together). With engine at a fast idle, wheels should not be turning. Proceed with adjustment as follows.
- 8.4.3 Adjust centering on pumps first. To adjust pump neutral – use a 17mm open end wrench and an 8mm open end wrench. Use the 17mm wrench to loosen the locknut (loosen just enough to turn eccentric with the 8mm wrench). Turn eccentric back and forth to see which way it needs to be adjusted. Adjust so wheel stops turning. When wheel stops turning jog lever forward and backward and let return to neutral. If necessary, readjust until neutral is achieved then retighten locknut with the 17mm wrench.



- 8.4.4 Picture above shows location of adjustments.
- 8.4.5 Shut down engine and lower mower to the ground.
- 8.4.6 When the pumps' neutral positions have been readjusted, the linkage rods will have to be adjusted, also.
- 8.4.7 With engine off, and control handles in the operating position, check linkage adjustment. As you move the levers into the parking lock position the tab at the lower end of the control levers should enter the square hole perfectly centered. Neither side of the tab should touch the sides as the lever is moved into its locked position. The locations are shown in the figures below.





- 8.4.8 Loosen 5/16 locknuts on the linkage rod. Keep in mind that the nuts at the rear of the rods are LH threaded and the nuts at the front are RH thread. Turn linkage rod to lengthen or shorten as needed so correct alignment is achieved.
- 8.4.9 Retighten locknuts, then recheck alignment. Readjust or fine tune as necessary.

## **8.5 Deck Belt Replacement –**

- 8.5.1 Lower deck to its lowest position.
- 8.5.2 At front of mower deck, remove hairpin clip and lift spring tensioning arm off of its stud.
- 8.5.3 Flip up side covers – covers can be locked in an open position by opening up 90 degrees and inserting a pin, bolt or screwdriver in the hole.
- 8.5.4 Belt can now be removed.
- 8.5.5 Replace worn belt with the new belt.
- 8.5.6 Reattach the spring tensioning arm onto its stud, replace hairpin clip.
- 8.5.7 Proceed with adjusting tension as described in step #9.

## **9 Fuel and Lubricant Recommendations**

### **9.1 Gasoline Recommendations**

- 9.1.1 Use unleaded gasoline with a pump octane rating of 86 or higher.
- 9.1.2 These engines are designed to run on unleaded gasoline. Unleaded gas produces fewer engine and spark plug deposits and extends exhaust system life.
- 9.1.3 Never use old or stale gasoline or a oil/gas mixture. Avoid getting dirt or water in the tank.

### **9.2 Oxygenated Fuels**

- 9.2.1 To meet clean air standards, some area of the United States and Canada use oxygenated fuels to reduce emissions.
- 9.2.2 If you use an oxygenated fuel, be sure it is unleaded and meets the minimum octane rating of 86.
- 9.2.3 Ethanol - (ethyl or grain alcohol)10% by volume. You may use gasoline containing up to 10% ethanol by volume. Ethanol blends may me marketed under the name "Gasohol".
- 9.2.4 MTBE - (methyl tertiary butyl ether) 15% by volume. You may use gasoline containing up to 15% MTBE by volume.

- 9.2.5 Methanol - (methyl or wood alcohol) 5% by volume. You may use gasoline containing up to 5% by volume, as long as it contains cosolvents and corrosion inhibitors to protect the fuel system. Gasoline containing more than 5% methanol by volume may cause starting problems and/or performance problems. It may also damage metal, rubber and plastic parts of your fuel system.
- 9.2.6 If you notice any undesirable operating symptoms, try another source of gasoline.
- 9.2.7 Fuel system damage or performance problems resulting from the use of an oxygenated fuel containing more than the percentages of oxygenates listed above are not covered under warranty.

### **9.3 Fuel Stabilizer / Conditioner**

- 9.3.1 Use a fuel stabilizer / conditioner to keep gasoline fresh if mower is to be stored longer than 30 days. Fuel stabilizers are most effective when mixed with fresh fuel. They won't make old gasoline "fresh".

### **9.4 Engine Oil Recommendation**

- 9.4.1 Only use clean, new oil from a sealed container.
- 9.4.2 Use 4-stroke automotive detergent oil. SAE 10W-30 is recommended for general use from 0 deg F to over 100 deg F. The SAE viscosity and service classification are in the API label on the oil container. "SJ" service classification is recommended.

### **9.5 Hydraulic Oil Recommendation**

- 9.5.1 We recommend the use of a Universal Tractor Hydraulic Oil.
- 9.5.2 Viscosity – 60 SUS (10cSt) at no more than 212deg F (100 deg C)
- 9.5.3 We can furnish you with the proper choice of hydraulic oil or;

Some acceptable substitutes are as follows:

- 9.5.4 John Deere: J20A, JD20C, Hy-Gard
- 9.5.5 Case-IH: Hy-Tran, Hy-Tran Plus, Hy-Tran Ultra
- 9.5.6 AGCO: Power Fluid 821, 821XL
- 9.5.7 Cenex: Qwiklift HTB, Maxtron THF+

## **10 Specifications**

### **10.1 Engine Specs**

- 10.1.1 Make / Model.....Honda GXV-620-QAF Type
- 10.1.2 Engine Type .....4-stroke, Overhead Valve, 2 cylinder, 90° V-Twin
- 10.1.3 Displacement.....37.5 in<sup>3</sup> (614 cm<sup>3</sup>)
- 10.1.4 Bore x Stroke.....3.03" x 2.60" (77mm x 66mm)
- 10.1.5 Maximum Output .....20 bhp (14.9kW) at 3600 rpm
- 10.1.6 Maximum Torque .....32.5 lbf-ft (44.13 N-m) at 2500 rpm
- 10.1.7 Cooling System .....Forced Air
- 10.1.8 Ignition System.....Transistorized Magneto
- 10.1.9 Spark Plug Gap .....0.028" – 0.031" (0.70 mm – 0.80 mm)
- 10.1.10 Valve Clearance .....INTAKE; 0.15 mm ± 0.02 mm EXHAUST; 0.20mm ± 0.02mm
- 10.1.11 Engine Oil Capacity.....2.0 US quarts with oil filter change
- 10.1.12 Engine Speeds .....Idle 1,400 ±150 rpm; Fast 3,600 rpm.

### **10.2 Hydrostatic System Specs**

- 10.2.1 Hydrostatic Pumps (2)...White KP Series; Displacement – 10cc / revolution; Variable displacement, axial piston pump.

- 10.2.2 Wheel Motors (2).....White RG Series; 12.2 in<sup>3</sup> (200cc)
- 10.2.3 Component Manufacturer     White Hydraulics, Inc.,PO Box 1127, Hopkinsville,  
KY. USA 42241
- 10.2.4 System Capacity .....2.1 US gallons (8.0 litres)

### 10.3 Fuel Tank Capacity

- 10.3.1 7.0 US gallons (26.5 litres)

## 11 Spare Parts Listing

11.1.1	Description .....	Unit .....	Part#
11.1.2	Engine Oil.....	qt. ....	
11.1.3	Engine Oil.....	gal.....	
11.1.4	Engine Oil Filter.....	ea .....	4168
11.1.5	18" Blades–Std.....	ea .....	4145
11.1.6	18" Blades–Mulching.....	ea .....	4280
11.1.7	Blade Washer.....	ea .....	4466
11.1.8	Blade Bolt.....	ea .....	191422
11.1.9	Air Filter (Paper) .....	ea .....	4849
11.1.10	Hydraulic Oil Reg .....	qt .....	
11.1.11	Hydraulic Oil Reg .....	gal.....	
11.1.12	Hydraulic Oil Synthetic.....	qt .....	
11.1.13	Hydraulic Oil Synthetic.....	gal.....	
11.1.14	Hydraulic Oil Filter .....	ea .....	4496
11.1.15	Spark Plugs.....	ea .....	3618
11.1.16	Fuel Filter .....	ea .....	4195
11.1.17	Deck Drive Belt – B150 Kevlar (Gates).....	ea .....	3765
11.1.18	Pump Drive Belt – Gates Notched .....	ea .....	4199
11.1.19	Front Wheel / Tire Assy.....	ea .....	4164
11.1.20	Rear Wheel Tire Assy .....	ea .....	4165
11.1.21	Front Wheel Bearing set .....	ea .....	
11.1.22	Fuse 30 AMP.....	ea .....	7611

12

[illegible]

### 13 Service Record

13.1.1 Record all service and repairs here for future reference.

[illegible]

## **14 Warranty Information**

- 14.1.1 B&H Manufacturing, Inc. warrants each new Jazzer mower to be free, under normal use and service, from defects in workmanship and materials for a period of two (2) years from the date of delivery. This warranty shall be fulfilled by the repairing or replacement, free of charge, of any part that shows evidence of defect or improper workmanship provided that the part is returned to B&H Manufacturing Inc. within thirty (30) days of the date that such defect or improper workmanship is discovered. Parts shall be returned through the selling dealer and transportation charges must be prepaid by the buyer. No other express warranty is given and no affirmation of B&H Manufacturing Inc., by work or action, shall constitute a warranty.
- 14.1.2 B&H Manufacturing Inc. limits its warranty to only those products manufactured by B&H Manufacturing Inc. and does not warrant any part or component not manufactured by B&H Manufacturing Inc., such parts or components being subject to their manufacturer's warranties. Excluded from this warranty are parts subjected to accident, alteration, or negligence.
- 14.1.3 Exceptions to the warranty are as follows:
- 14.1.4 The deck weldment will be covered by a ten (10) year, from date of purchase, warranty.
- 14.1.5 The engine is covered by a manufacturer warranty and in the case of a warranty issue with an engine, B&H Manufacturing Inc. shall assist in providing the information necessary to the customer.
- 14.1.6 Belts are considered a normal wear part and are not covered by the standard warranty, if in the event belts are in need of replacement within sixty (60) days of purchase, B&H Manufacturing Inc. will cover one replacement under a conditional warranty, labor excluded.
- 14.1.7 B&H Manufacturing Inc. shall not be responsible for repairs or replacements which are necessitated, in whole or in part, by the use of parts not manufactured by or obtainable from B&H Manufacturing Inc.
- 14.1.8 In no event shall B&H Manufacturing Inc.'s warranty liability exceed the purchase price of the product. The foregoing limitation of liability will not apply to claims for personal injury caused solely by B&H Manufacturing Inc.'s negligence.

### **14.2 Warranty Return Procedure**

- 14.2.1 Check to see that the part meets the requirements for a warranty replacement as listed above.
- 14.2.2 Contact our sales department at (800) 240-3288 or (507) 847-2802 to verify that a claim is warranted and get an RGA#. All warranty claims without an RGA# will not be considered.
- 14.2.3 Make a copy and fill out the form on the following page in its entirety. Then package up the defective part with the form enclosed and ship the part to:
  - Warranty Department
  - B&H Manufacturing Inc.
  - 141 E County Rd 34
  - Jackson, MN 56143
- 14.2.4 Replacement parts will be billed to your account at regular cost when shipped out. Credit will be issued upon acceptance of warranty claim.

**B&H Manufacturing Inc.**

141 E County Rd 34  
 Jackson, MN 56143  
 Phone: (507) 847-2802  
 Fax: (507) 847-4655

RGA#: \_\_\_\_\_

Date: \_\_\_\_\_

Request for Product Return/Warranty Claim
---

To ensure proper credit or replacement to our customers, contact B & H Mfg. for prior approval on all returns and warranty claims. Please fill out sheet and enclose with items being returned.

\_\_\_\_\_  
 Customer Name

\_\_\_\_\_  
 Address

\_\_\_\_\_  
 City State Zip

\_\_\_\_\_  
 Phone

\_\_\_\_\_  
 Fax

\_\_\_\_\_  
 Dealer Name

\_\_\_\_\_  
 Address

\_\_\_\_\_  
 City State Zip

\_\_\_\_\_  
 Phone

\_\_\_\_\_  
 Fax

Proof of purchase required for warranty consideration. B & H Mfg. reserves the right to request warrantable product to be returned to B & H Mfg. for inspection purposes prior to issuance of credit.

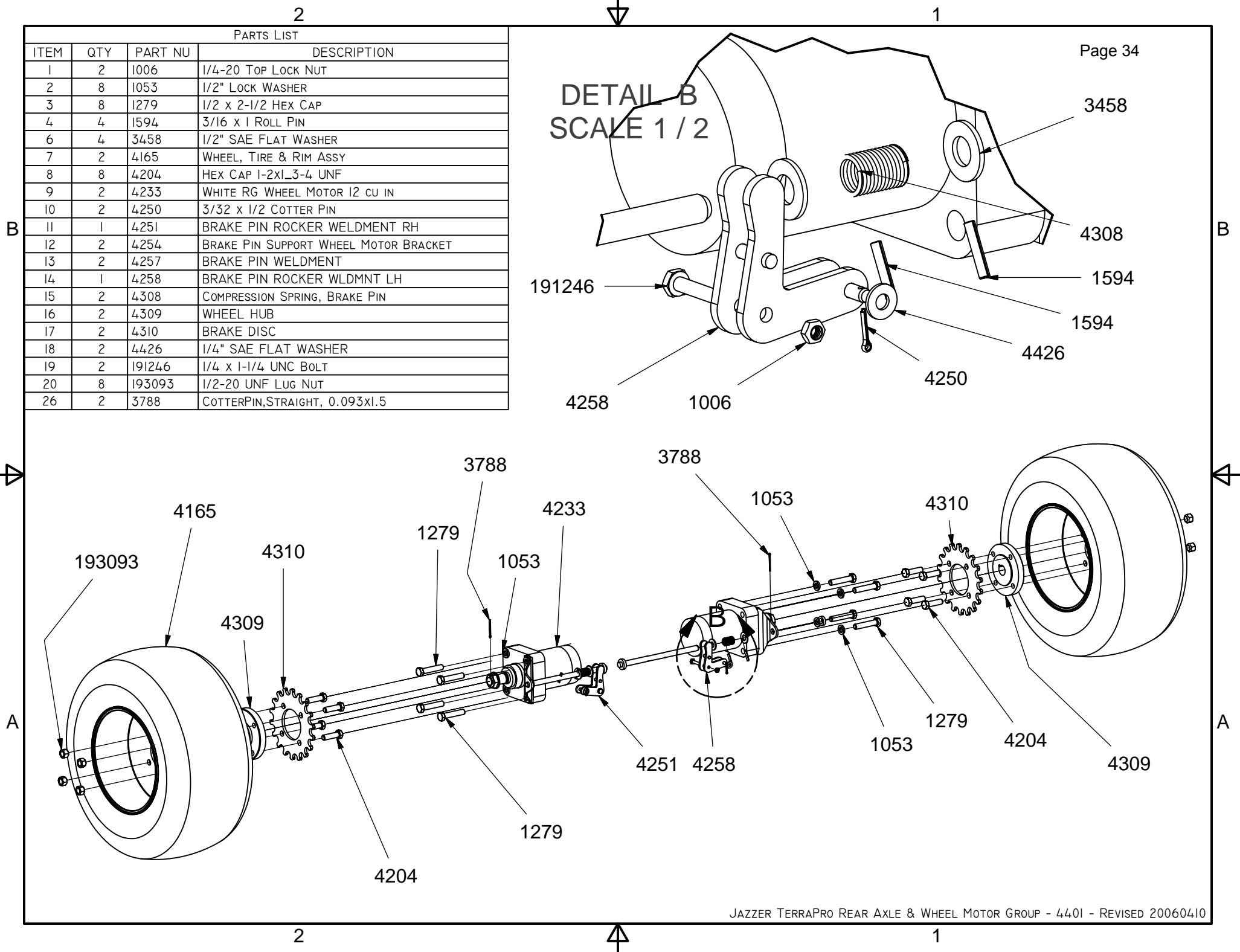
Serial Number: \_\_\_\_\_

Hours (at failure): \_\_\_\_\_

Description of the problem: \_\_\_\_\_

Item No.	Description	Qty.	Invoice #	Invoice Date	Reason for return/warranty

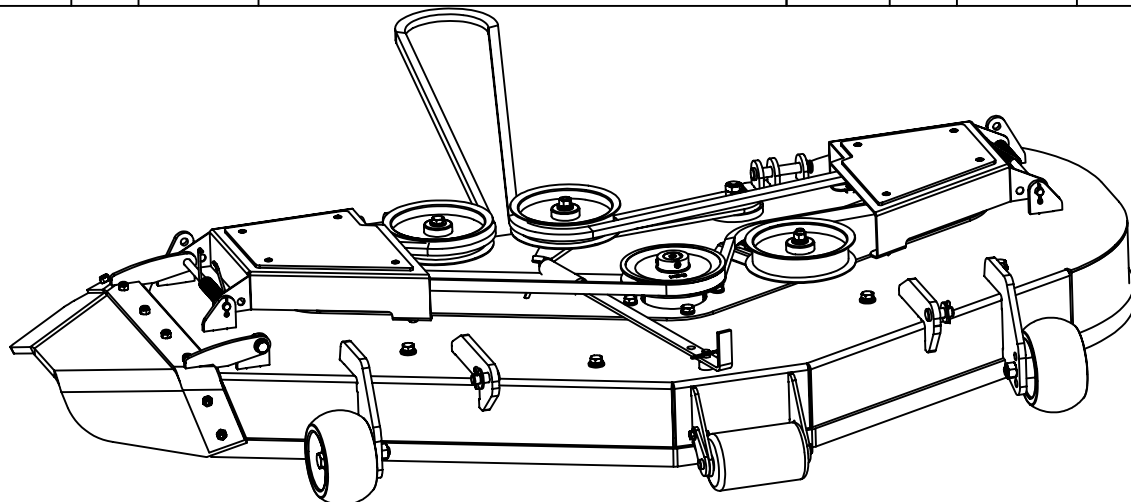
Comments- \_\_\_\_\_



## BILL OF MATERIALS

## BILL OF MATERIALS

ITM	QTY	PART#	DESCRIPTION	ITM	QTY	PART#	DESCRIPTION
1	3	1002	1/2-13 HEX NUT	31	1	4335	PULLEY COVER TREAD PLATE RH
2	17	1018	HEX CAP 3-8x1 UNC	32	1	4336	DEFLECTOR WELDMENT
3	1	1045	1/2-13 UNC JAM NUT	33	1	4339	RUBBER DEFLECTOR
4	3	1053	1/2" LOCK WASHER	34	1	4340	DEFLECTOR BOTTOM CLAMP STRAP
5	1	1624	5/16-18 HEX NUT UNC	35	8	4349	3/8 SAE FLAT WASHER
6	1	1658	HEX CAP 3-8x2 UNC	36	2	4350	3/8 X .056 BELLEVILLE WASHER
7	2	1826	3/8-16 UNC HEX NUT	37	1	4358	BELT TENSIONER ARM
8	19	1827	3/8" LOCK WASHER	38	1	4366	BAFFLE WELDMENT
9	4	2928	RUBBER BUMPER	39	1	4371	1/2-13 X 1-3/4 CARR BOLT
10	2	2988	5/32 x 3/4 COTTER PIN	40	1	4372	3/8 STD NC NYLOCK NUT
11	4	3458	1/2" SAE FLAT WASHER	41	3	4374	BK57 X 1" PULLEY W/ SET SCREWS
12	2	3624	1/4 x 1 HEX CAP SCREW	41.1	1	7187	BK57-1" CAST IRON PULLEY-2 SS'S
13	2	3637	REAR DECK ROLLER PINS	41.2	1	4123	SETSCREW 5_16-18 UNCx0.25 KNURLED
14	1	3765	B-151 BELT	41.3	1	192575	SETSCREW 5_16-18 UNCx0.375 - KNURLED
15	3	3862	SPINDLE ASSY MOWERS 2006-	42	3	4375	1/4 x 1 KEY
16	2	4002	HEX CAP 1-2x3_1-2 UNC	43	8	4376	3/16 X .250 STD POP RIVET
17	5	4060	1/4 x 1 CARR BOLT	44	4	4377	NUT, 8-32 UNC KEPS
18	7	4062	1/4 STD NC NYLOCK NUT	45	3	4466	BLADE SPINDLE WASHER
19	1	4064	5/16 x 3/4 CARR BOLT	46	2	6916	DECK WHEEL
20	3	4145	18" RH BLADE - STD.	47	2	7790	1/4 X 3/4 TAPPING SCREW
21	3	4203	5" IDLER PULLEY	48	2	30064	TORSION SPRING - MOWER
22	2	4222	CLEVIS PIN 1/2 x 3	49	1	30065	DECK BELT TIGHTENING SPRING
23	2	4225	3/8 x 2.25 CARR BOLT	50	2	30207	DECK ROLLER, 3" x 5"
24	1	4311	LH PULLEY COVER, PARENT #4471	51	3	190063	HAIR PIN, #3 FOR 3/8" PINS
25	3	4312	DECK IDLER BUSHING	52	1	191332	HEX CAP 3-8x1_1-4 UNC
26	1	4313	RH PULLEY COVER = PARENT #4471	53	3	191422	1/2 x 1-1/2 UNF HEX CAP SCREW
27	2	4314	3/8 x 7.825 PIN-ZINC	54	4	196304	1/8 X 3/4 COTTER PIN
28	1	4315	DECK WELDMENT 51" JAZZER	55	2	198046	1/4" FENDER WASHER
29	1	4333	SPRING HOOK	56	1	198064	5/16" LOCK WASHER
30	1	4334	PULLEY COVER TREAD PLATE LH	57	2	198119	1/2 X .070 BELLEVILLE WASHER

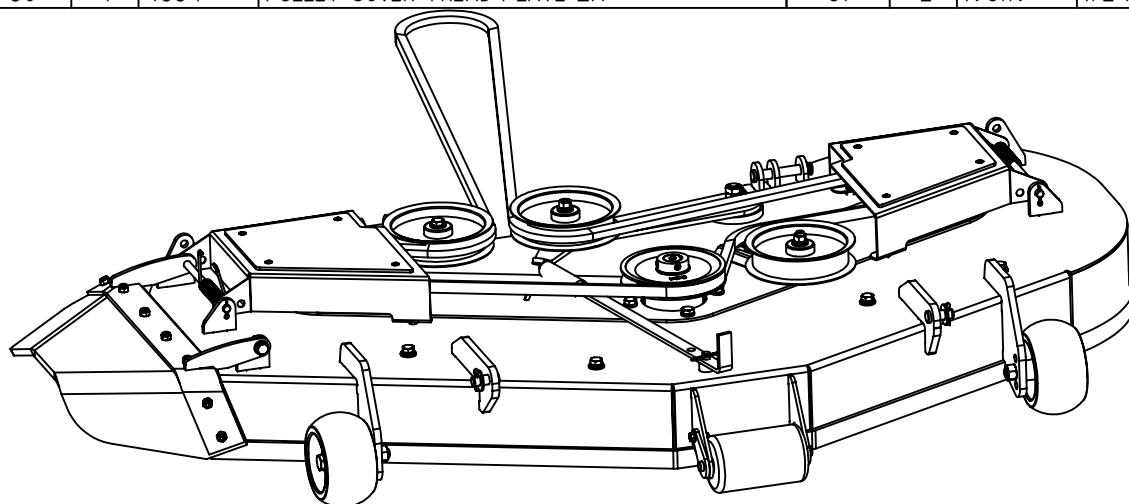


51" DECK ASSEMBLY COMPLETE

DETAIL ON DECK ASSEMBLY IS ON FOLLOWING PAGES.

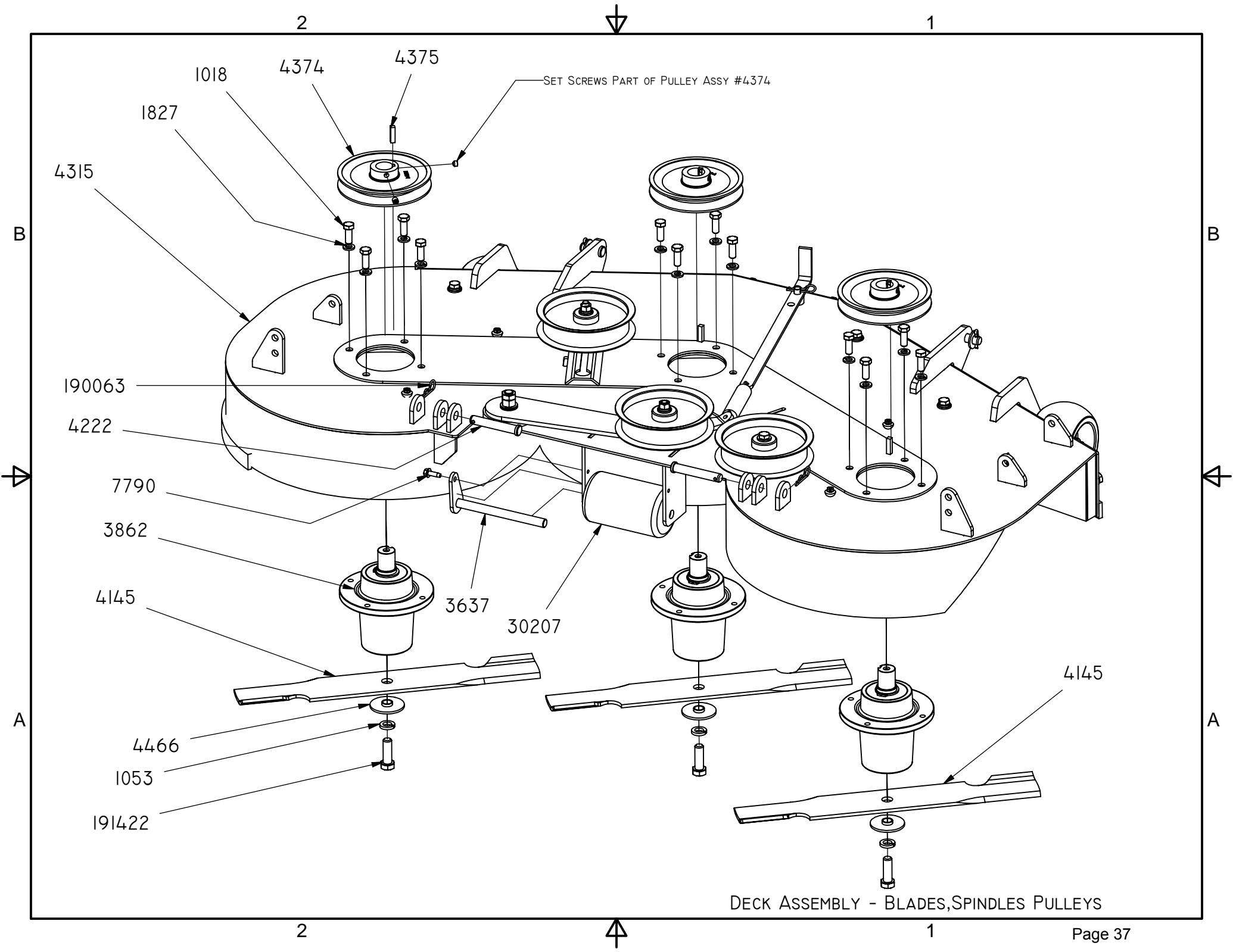


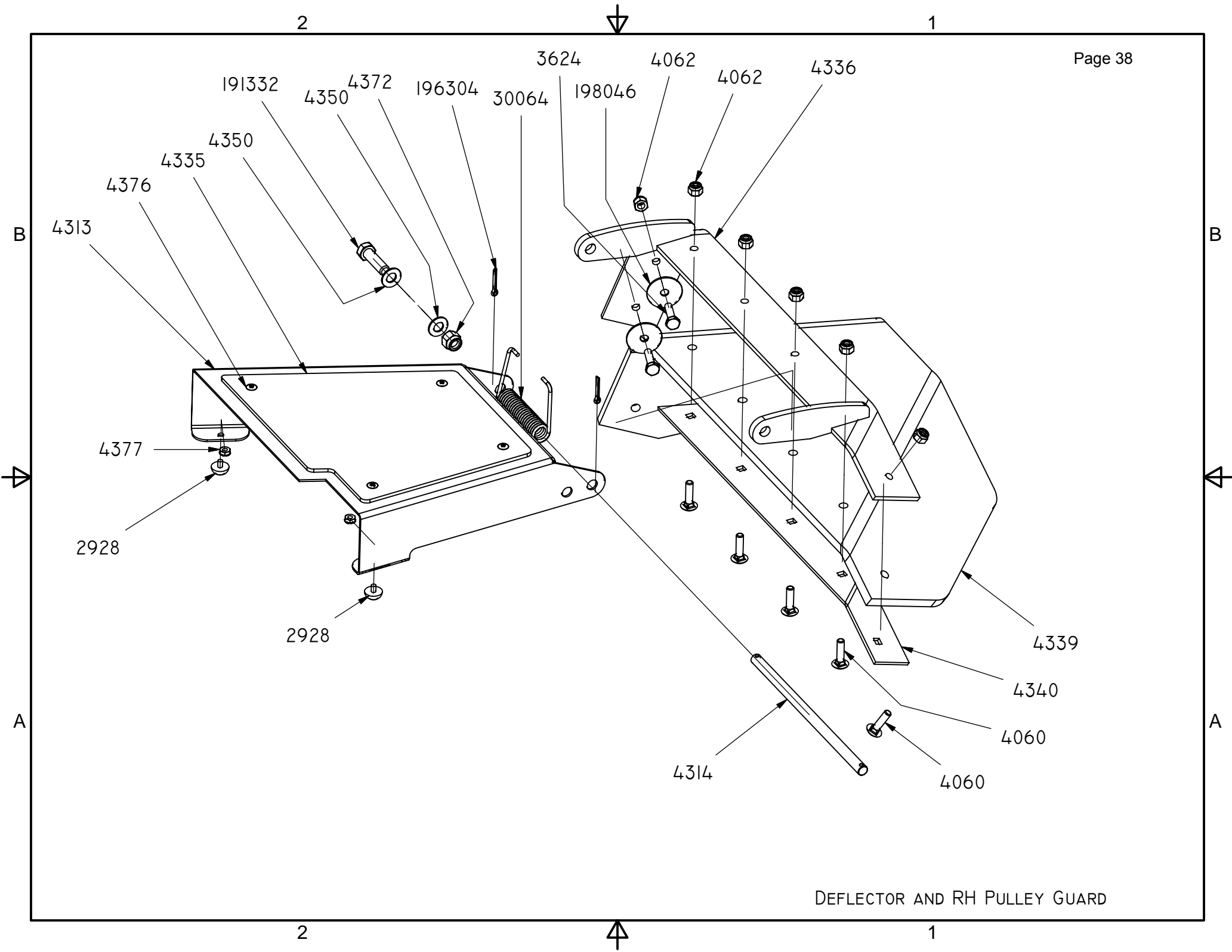
BILL OF MATERIALS				BILL OF MATERIALS			
ITM	QTY	PART#	DESCRIPTION	ITM	QTY	PART#	DESCRIPTION
1	3	1002	1/2-13 HEX NUT	31	1	4335	PULLEY COVER TREAD PLATE RH
2	17	1018	HEX CAP 3-8x1 UNC	32	1	4336	DEFLECTOR WELDMENT
3	1	1045	1/2-13 UNC JAM NUT	33	1	4339	RUBBER DEFLECTOR
4	3	1053	1/2" LOCK WASHER	34	1	4340	DEFLECTOR BOTTOM CLAMP STRAP
5	1	1624	5/16-18 HEX NUT UNC	35	8	4349	3/8 SAE FLAT WASHER
6	1	1658	HEX CAP 3-8x2 UNC	36	2	4350	3/8 X .056 BELLEVILLE WASHER
7	2	1826	3/8-16 UNC HEX NUT	37	1	4358	BELT TENSIONER ARM
8	19	1827	3/8" LOCK WASHER	38	1	4366	BAFFLE WELDMENT
9	4	2928	RUBBER BUMPER	39	1	4371	1/2-13 X 1-3/4 CARR BOLT
10	2	2988	5/32 x 3/4 COTTER PIN	40	1	4372	3/8 STD NC NYLOCK NUT
11	4	3458	1/2" SAE FLAT WASHER	41	3	4374	BK57 X 1" PULLEY W/ SET SCREWS
12	2	3624	1/4 x 1 HEX CAP SCREW	41.1	1	7187	BK57-1" CAST IRON PULLEY-2 SS'S
13	2	3637	REAR DECK ROLLER PINS	41.2	1	4123	SETSCREW 5_16-18 UNCx0.25 KNURLED
14	1	3765	B-151 BELT	41.3	1	192575	SETSCREW 5_16-18 UNCx0.375 - KNURLED
15	3	3862	SPINDLE ASSY MOWERS 2006-	42	3	4375	1/4 x 1 KEY
16	2	4002	HEX CAP 1-2x3_1-2 UNC	43	8	4376	3/16 X .250 STD POP RIVET
17	5	4060	1/4 x 1 CARR BOLT	44	4	4377	NUT, 8-32 UNC KEPS
18	7	4062	1/4 STD NC NYLOCK NUT	45	3	4466	BLADE SPINDLE WASHER
19	1	4064	5/16 x 3/4 CARR BOLT	46	2	6916	DECK WHEEL
20	3	4145	18" RH BLADE - STD.	47	2	7790	1/4 X 3/4 TAPPING SCREW
21	3	4203	5" IDLER PULLEY	48	2	30064	TORSION SPRING - MOWER
22	2	4222	CLEVIS PIN 1/2 x 3	49	1	30065	DECK BELT TIGHTENING SPRING
23	2	4225	3/8 x 2.25 CARR BOLT	50	2	30207	DECK ROLLER, 3" x 5"
24	1	4311	LH PULLEY COVER, PARENT #4471	51	3	190063	HAIR PIN, #3 FOR 3/8" PINS
25	3	4312	DECK IDLER BUSHING	52	1	191332	HEX CAP 3-8x1_1-4 UNC
26	1	4313	RH PULLEY COVER = PARENT #4471	53	3	191422	1/2 x 1-1/2 UNF HEX CAP SCREW
27	2	4314	3/8 x 7.825 PIN-ZINC	54	4	196304	1/8 X 3/4 COTTER PIN
28	1	4315	DECK WELDMENT 51" JAZZER	55	2	198046	1/4" FENDER WASHER
29	1	4333	SPRING HOOK	56	1	198064	5/16" LOCK WASHER
30	1	4334	PULLEY COVER TREAD PLATE LH	57	2	198119	1/2 X .070 BELLEVILLE WASHER



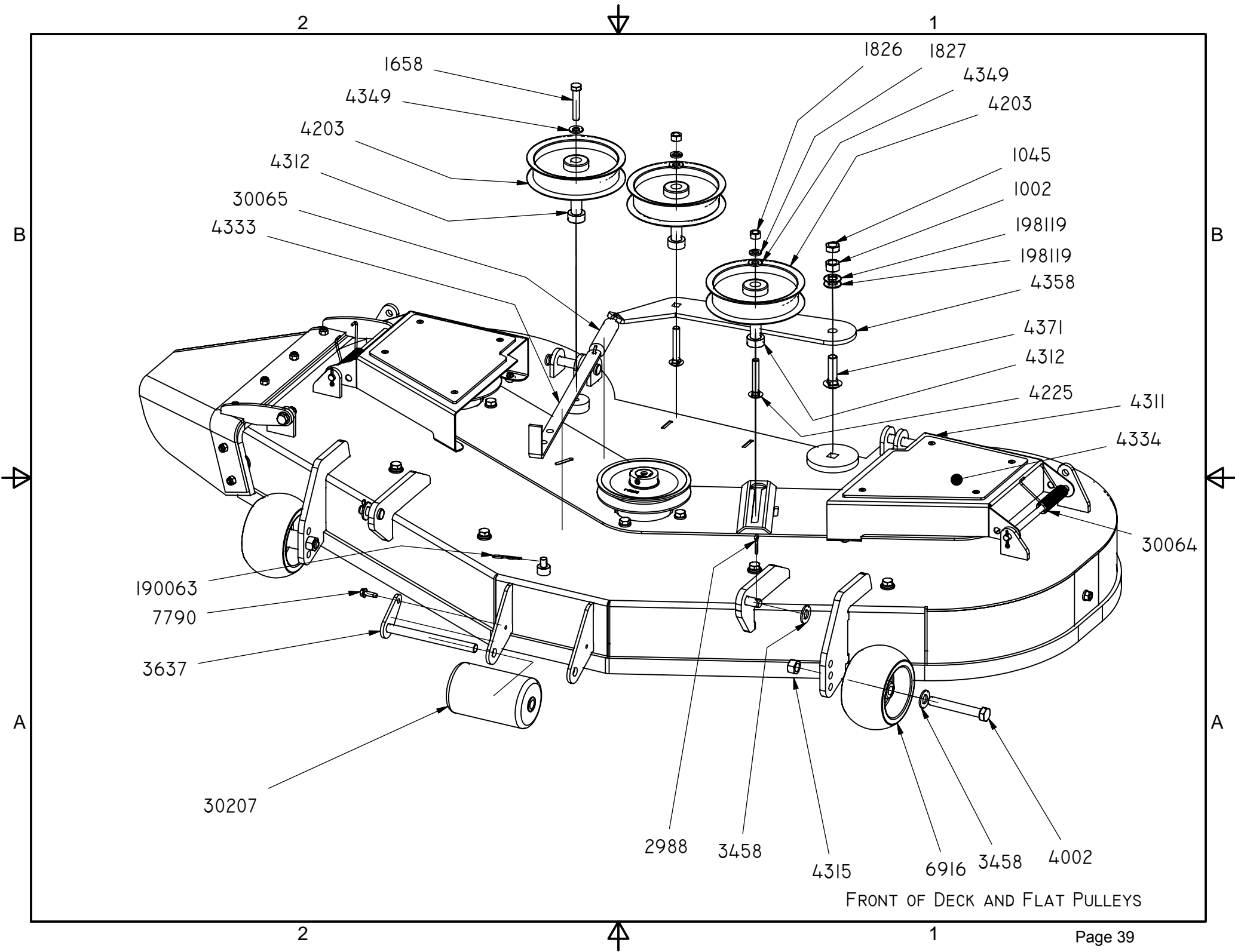
51" DECK ASSEMBLY COMPLETE

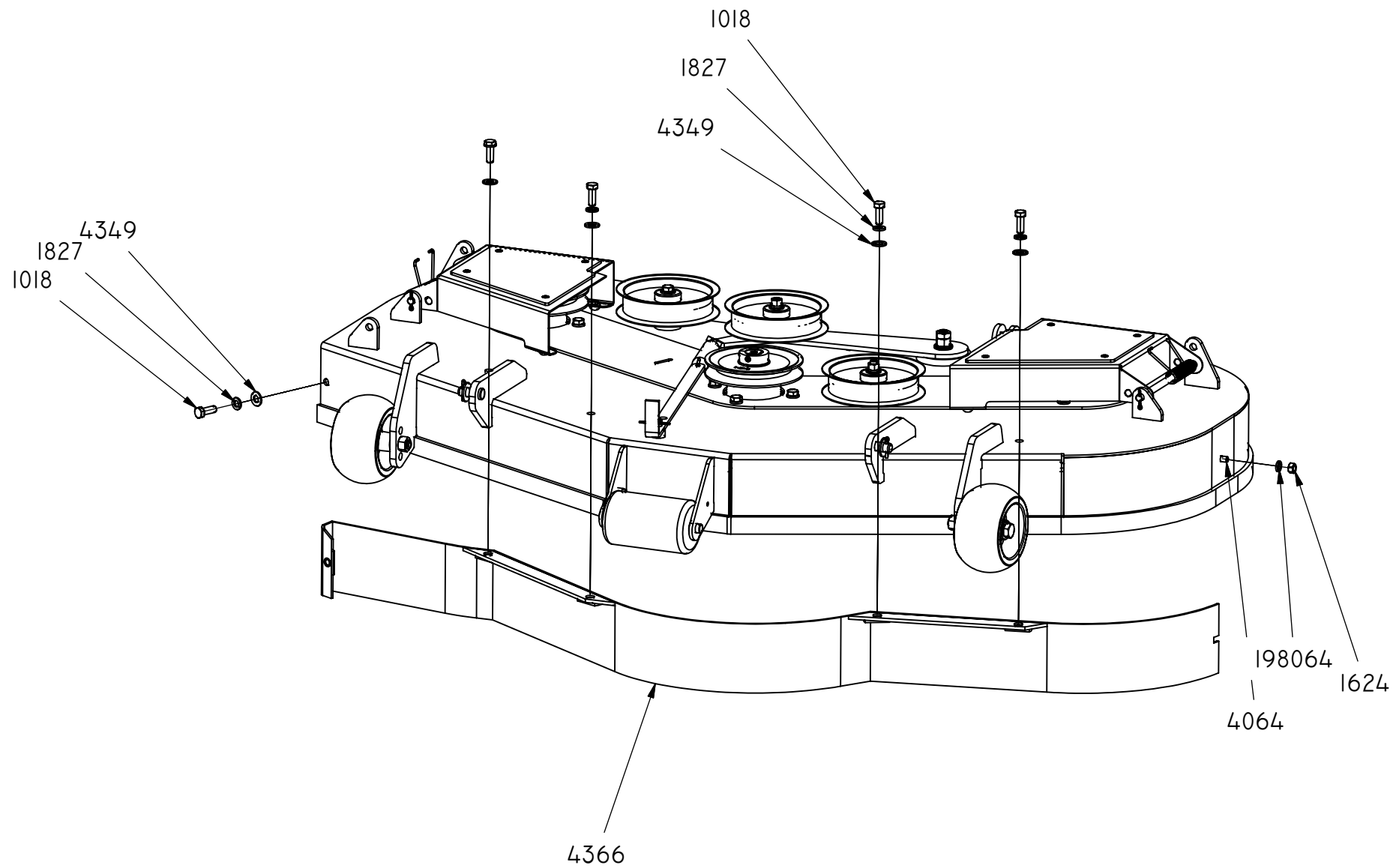
DETAIL ON DECK ASSEMBLY IS ON FOLLOWING PAGES.



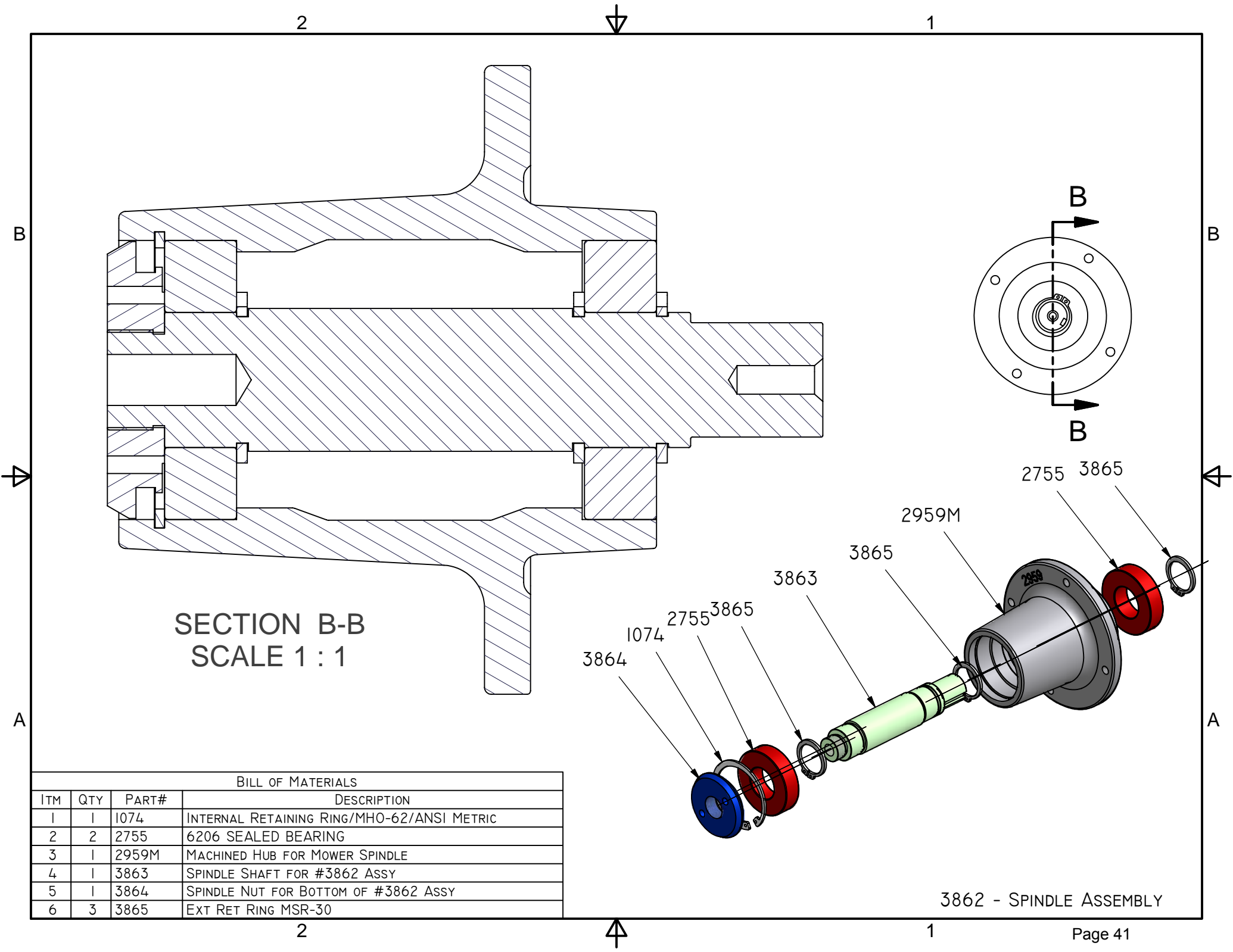


DEFLECTOR AND RH PULLEY GUARD





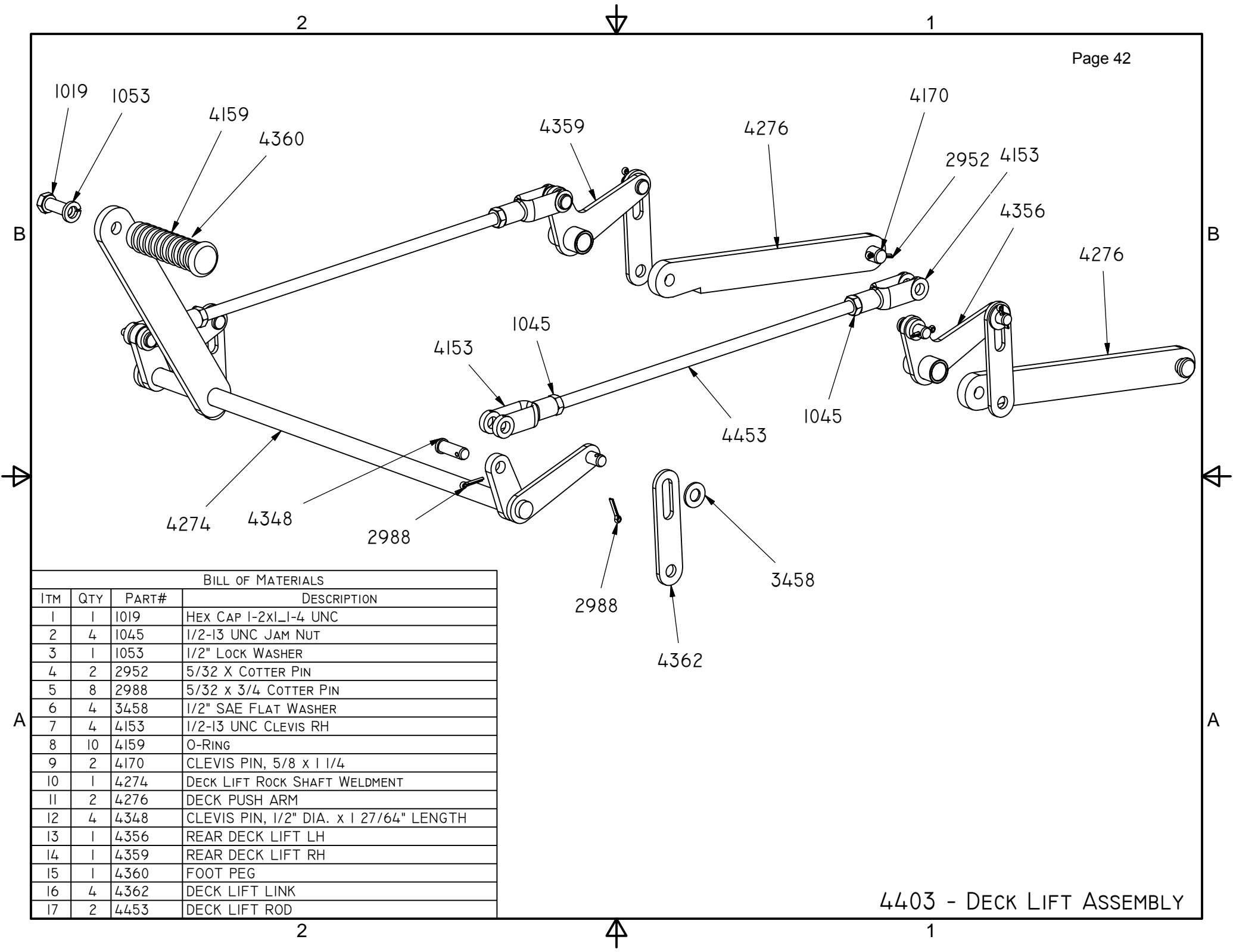
DECK BAFFLE AND MOUNTING BOLTS



SECTION B-B  
SCALE 1 : 1

BILL OF MATERIALS			
ITM	QTY	PART#	DESCRIPTION
1	1	1074	INTERNAL RETAINING RING/MHO-62/ANSI METRIC
2	2	2755	6206 SEALED BEARING
3	1	2959M	MACHINED HUB FOR MOWER SPINDLE
4	1	3863	SPINDLE SHAFT FOR #3862 ASSY
5	1	3864	SPINDLE NUT FOR BOTTOM OF #3862 ASSY
6	3	3865	EXT RET RING MSR-30

3862 - SPINDLE ASSEMBLY



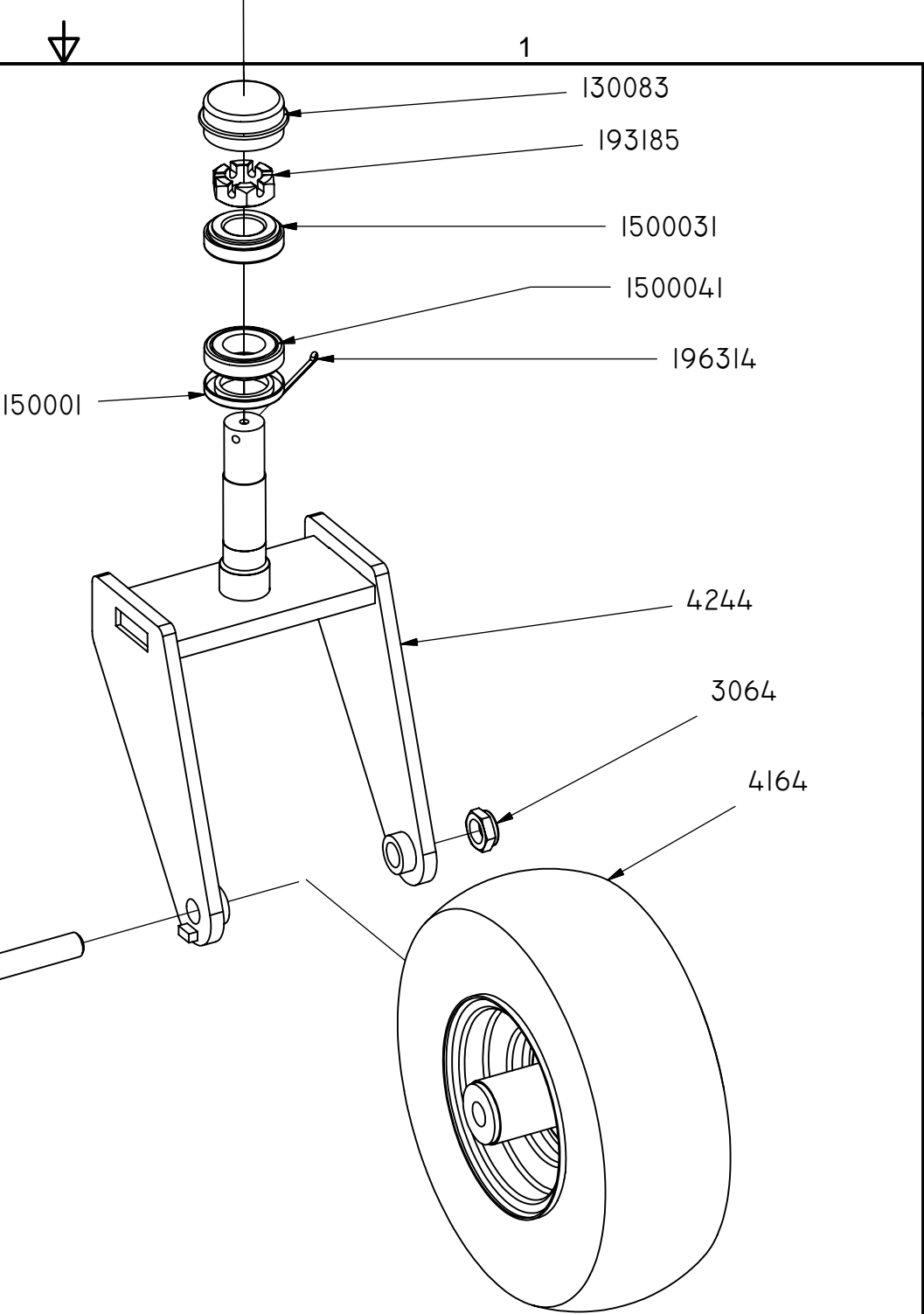
BILL OF MATERIALS

ITM	QTY	PART#	DESCRIPTION
1	1	1019	HEX CAP 1-2x1-1-4 UNC
2	4	1045	1/2-13 UNC JAM NUT
3	1	1053	1/2" LOCK WASHER
4	2	2952	5/32 X COTTER PIN
5	8	2988	5/32 x 3/4 COTTER PIN
6	4	3458	1/2" SAE FLAT WASHER
7	4	4153	1/2-13 UNC CLEVIS RH
8	10	4159	O-RING
9	2	4170	CLEVIS PIN, 5/8 x 1 1/4
10	1	4274	DECK LIFT ROCK SHAFT WELDMENT
11	2	4276	DECK PUSH ARM
12	4	4348	CLEVIS PIN, 1/2" DIA. x 1 27/64" LENGTH
13	1	4356	REAR DECK LIFT LH
14	1	4359	REAR DECK LIFT RH
15	1	4360	FOOT PEG
16	4	4362	DECK LIFT LINK
17	2	4453	DECK LIFT ROD

4403 - DECK LIFT ASSEMBLY

PARTS LIST			
ITEM	QTY	PART NUMBE	DESCRIPTION
1	2	1029	HEX CAP 5-8x7 UNC
2	2	3064	5/8 THIN NC NYLOCK NUT
3	2	4164	11-X 4 FRONT WHEEL TIRE RIM ASSY
4	2	4244	FRONT CASTER FORK WELDMNT
5	2	130083	DUST CAP - ZINC
6	2	150001	GREASE SEAL
7	2	193185	1" SLOTTED NUT - THIN
8	2	196314	1/8 x 2 COTTER PIN
9	2	1500031	BEARING-CUP&CONE 1" BORE
10	2	1500041	BEARING-CUP&CONE 1.0625" BORE

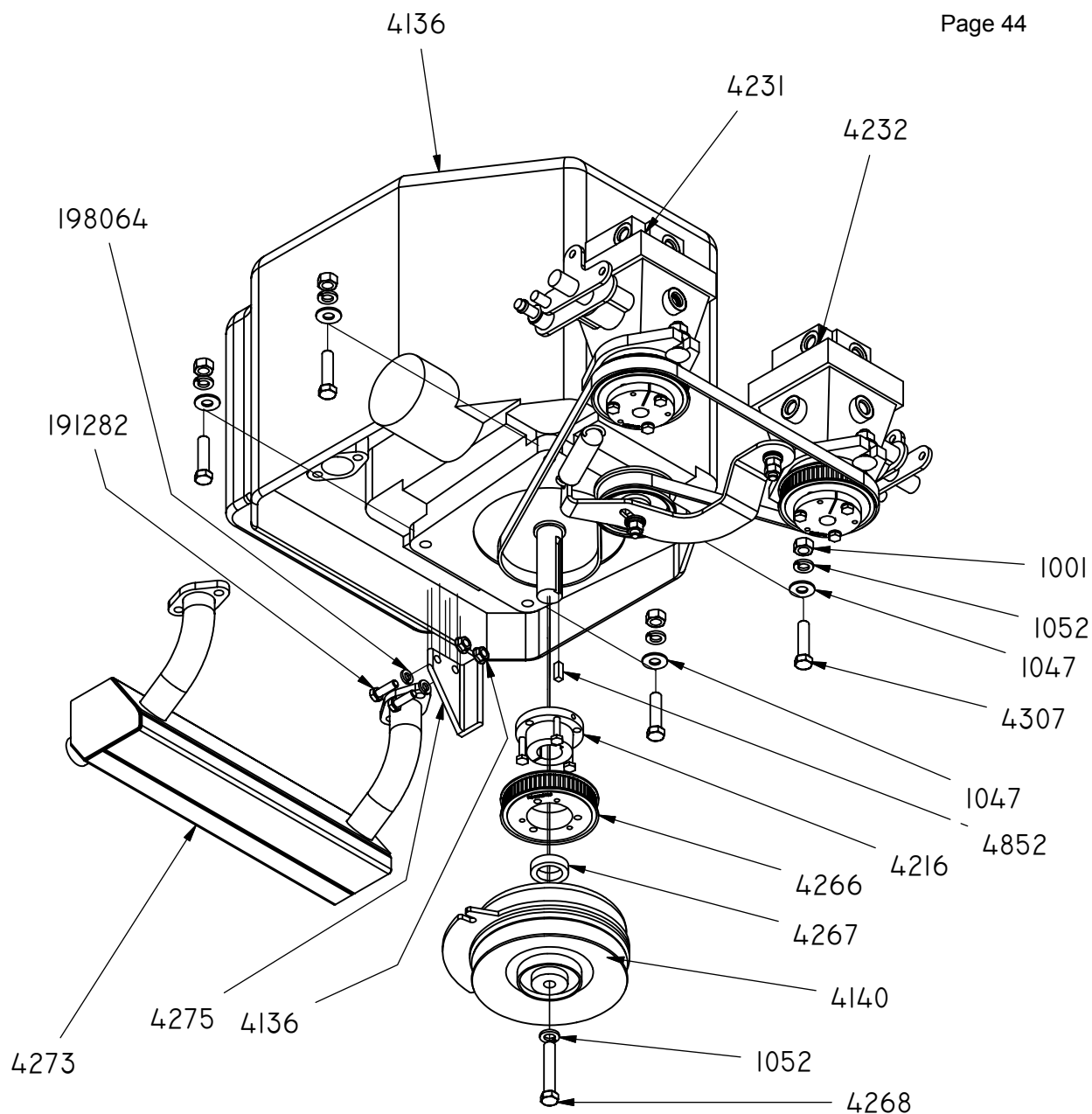
QUANTITIES LISTED ABOVE ARE FOR BOTH FRONT WHEELS



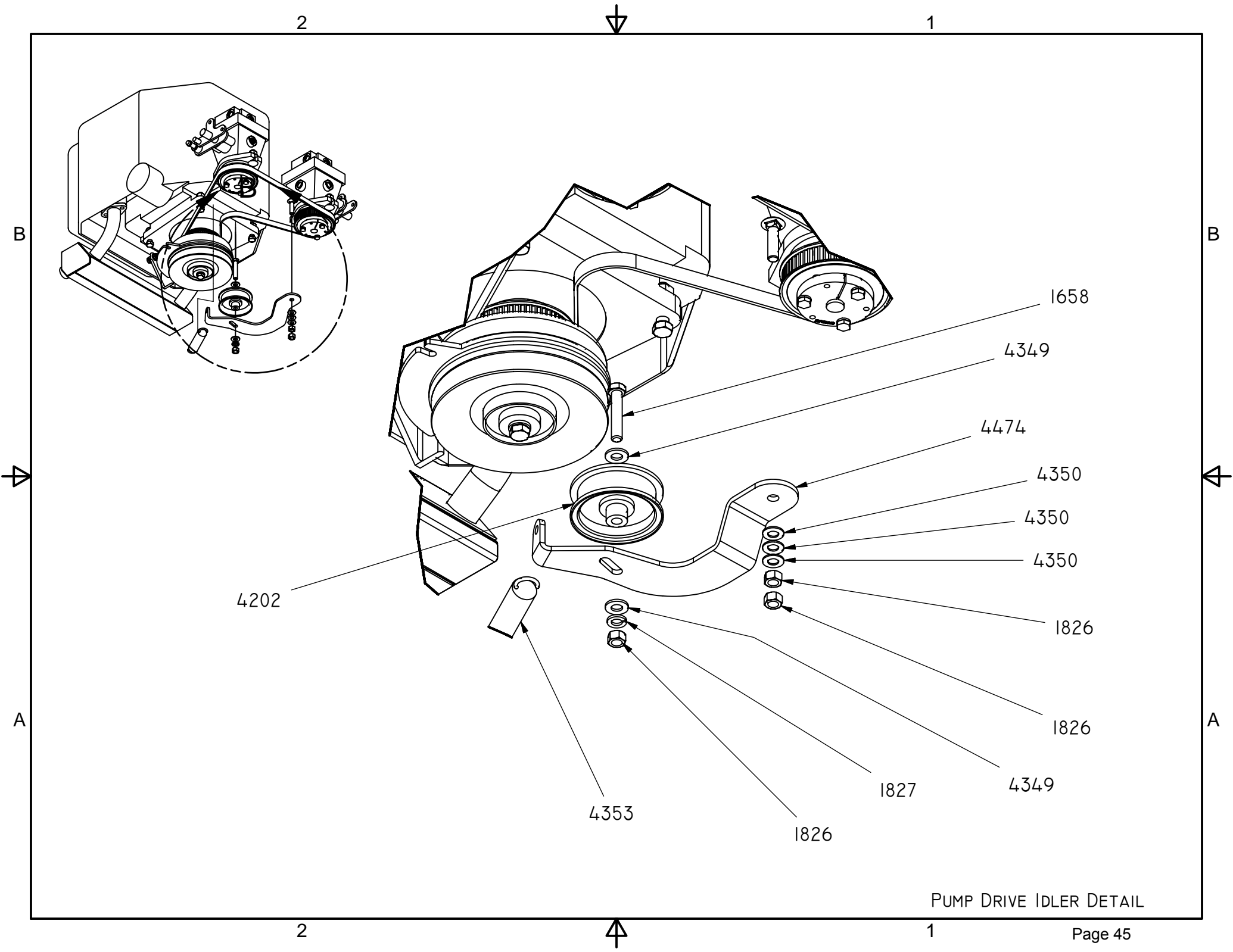
4404 - FRONT WHEEL GROUP

## PARTS LIST

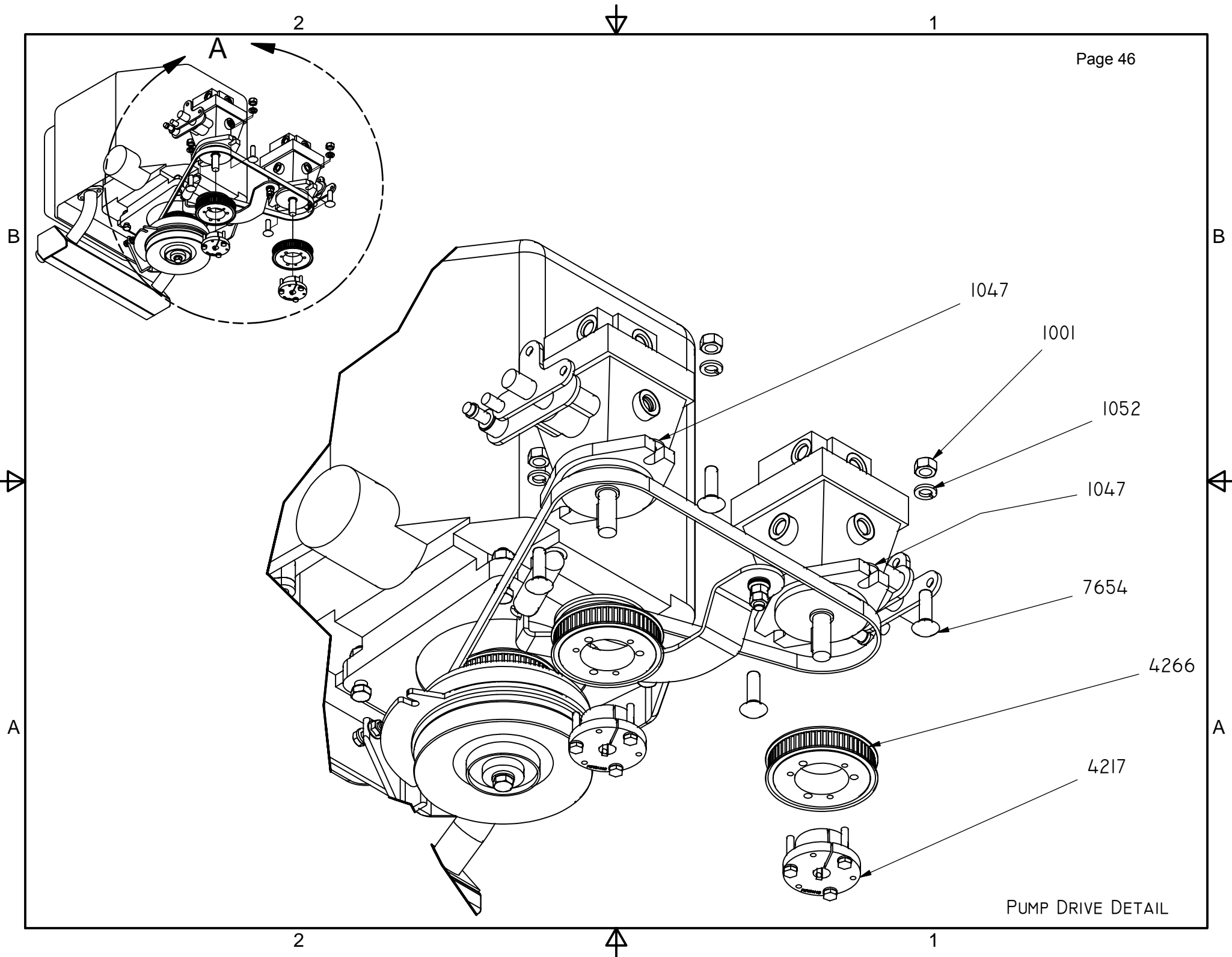
ITEM	QTY	PART NU	DESCRIPTION
1	8	1001	7/16 Hex Nut UNC
2	8	1047	3/8 USS FLAT WASHER
3	9	1052	7/16" Lock Washer
4	1	1658	Hex CAP 3-8x2 UNC
5	3	1826	3/8-16 UNC Hex Nut
6	1	1827	3/8" Lock Washer
7	1	3945	JAZZERMOWERS.COM DECAL
8	1	4136	ENGINE, HONDA GXV20
9	1	4140	WARNER CLUTCH # 1-5218-52 B
10	2	4172	5MM X 25MM KEY
11	1	4199	BELT 5MM PITCH X 51.181 X 15MM WIDE
12	1	4202	2.75" IDLER PULLEY
13	1	4216	BUSHING, SH 1" BORE
14	2	4217	BUSHING SH 15MM
15	1	4231	WHITE LH PUMP (OUR RH)
16	1	4232	WHITE RH PUMP (OUR LH)
17	3	4266	SPROCKET, 5MM PITCH, 60 GROOVE, SH BORE
18	1	4267	CLUTCH SPACER
19	1	4268	7/16 x 2-1/2 Hex Cap Screw
20	1	4273	MUFFLER
21	1	4275	CLUTCH STOP
22	4	4307	Hex Cap 7-16x1.3-4 UNC
23	2	4349	3/8 SAE Flat Washer
24	3	4350	3/8 X .056 Belleville Washer
25	1	4353	Pump Drive Idler Spring
26	1	4354	3/8 X 1-1/2 Carriage Bolt
27	1	4474	Pump Drive Idler Folded-Painted Parent #4352
28	1	4852	1/4 Key x 3/4 Long
29	4	7654	7/16 X 1-1/2 Carr Bolt
30	2	8230	5/16-18NC Serr Flange ZP
31	2	191282	5-16x1 UNC Hex Cap
32	2	198064	5/16" Lock Washer



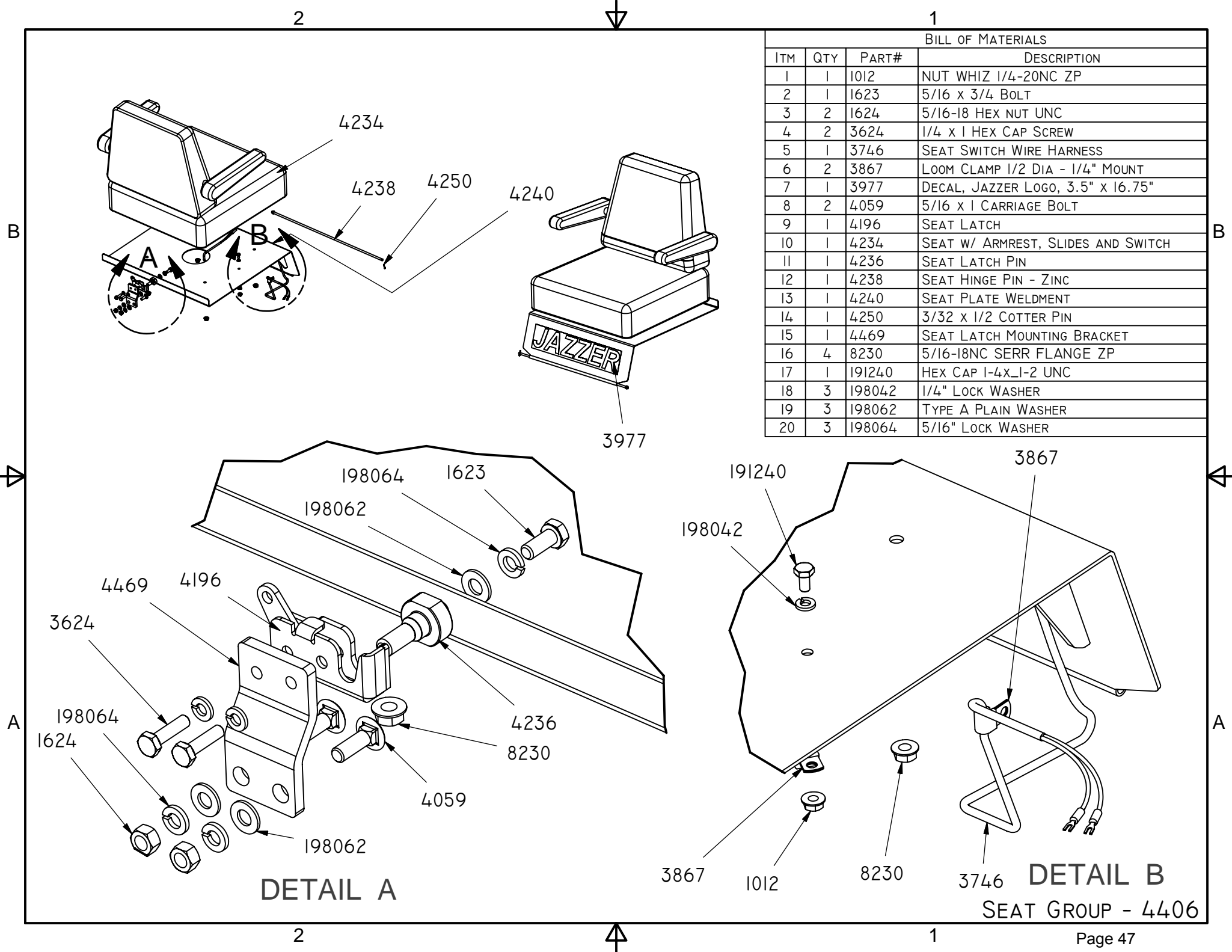
4405 - ENGINE AND PUMP GROUP  
DETAIL DRAWINGS ON FOLLOWING PAGES



PUMP DRIVE IDLER DETAIL



PUMP DRIVE DETAIL



BILL OF MATERIALS			
ITM	QTY	PART#	DESCRIPTION
1	1	1012	NUT WHIZ 1/4-20NC ZP
2	1	1623	5/16 x 3/4 BOLT
3	2	1624	5/16-18 HEX NUT UNC
4	2	3624	1/4 x 1 HEX CAP SCREW
5	1	3746	SEAT SWITCH WIRE HARNESS
6	2	3867	LOOM CLAMP 1/2 DIA - 1/4" MOUNT
7	1	3977	DECAL, JAZZER LOGO, 3.5" x 16.75"
8	2	4059	5/16 x 1 CARRIAGE BOLT
9	1	4196	SEAT LATCH
10	1	4234	SEAT W/ ARMREST, SLIDES AND SWITCH
11	1	4236	SEAT LATCH PIN
12	1	4238	SEAT HINGE PIN - ZINC
13	1	4240	SEAT PLATE WELDMENT
14	1	4250	3/32 x 1/2 COTTER PIN
15	1	4469	SEAT LATCH MOUNTING BRACKET
16	4	8230	5/16-18NC SERR FLANGE ZP
17	1	191240	HEX CAP 1-4x1-2 UNC
18	3	198042	1/4" LOCK WASHER
19	3	198062	TYPE A PLAIN WASHER
20	3	198064	5/16" LOCK WASHER

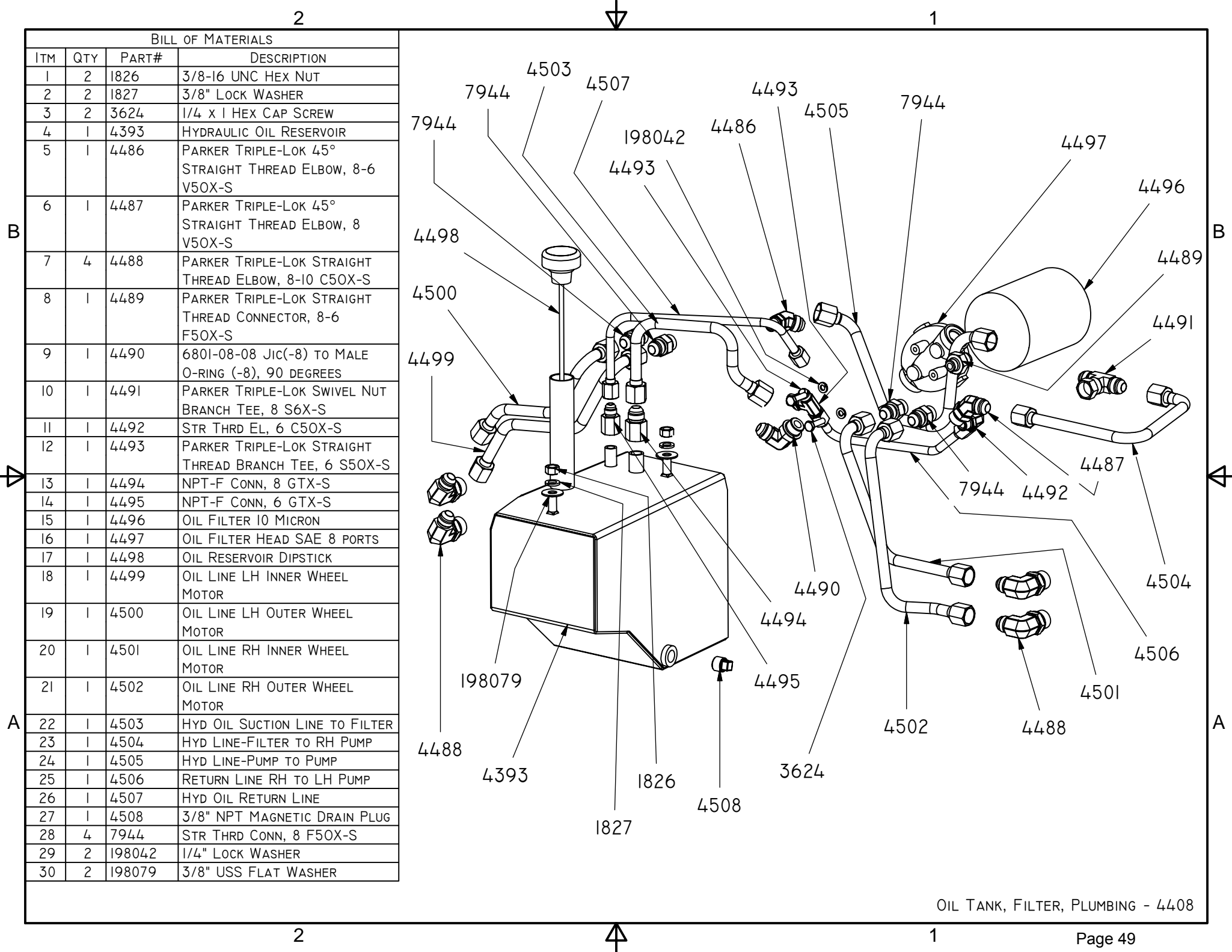
DETAIL A

DETAIL B

SEAT GROUP - 4406

## PARTS LIST





BILL OF MATERIALS			
ITM	QTY	PART#	DESCRIPTION
1	2	1826	3/8-16 UNC HEX NUT
2	2	1827	3/8" LOCK WASHER
3	2	3624	1/4 x 1 HEX CAP SCREW
4	1	4393	HYDRAULIC OIL RESERVOIR
5	1	4486	PARKER TRIPLE-LOK 45° STRAIGHT THREAD ELBOW, 8-6 V50X-S
6	1	4487	PARKER TRIPLE-LOK 45° STRAIGHT THREAD ELBOW, 8 V50X-S
7	4	4488	PARKER TRIPLE-LOK STRAIGHT THREAD ELBOW, 8-10 C50X-S
8	1	4489	PARKER TRIPLE-LOK STRAIGHT THREAD CONNECTOR, 8-6 F50X-S
9	1	4490	6801-08-08 Jic(-8) TO MALE O-RING (-8), 90 DEGREES
10	1	4491	PARKER TRIPLE-LOK SWIVEL NUT BRANCH TEE, 8 S6X-S
11	1	4492	STR THRD EL, 6 C50X-S
12	1	4493	PARKER TRIPLE-LOK STRAIGHT THREAD BRANCH TEE, 6 S50X-S
13	1	4494	NPT-F CONN, 8 GTX-S
14	1	4495	NPT-F CONN, 6 GTX-S
15	1	4496	OIL FILTER 10 MICRON
16	1	4497	OIL FILTER HEAD SAE 8 PORTS
17	1	4498	OIL RESERVOIR DIPSTICK
18	1	4499	OIL LINE LH INNER WHEEL MOTOR
19	1	4500	OIL LINE LH OUTER WHEEL MOTOR
20	1	4501	OIL LINE RH INNER WHEEL MOTOR
21	1	4502	OIL LINE RH OUTER WHEEL MOTOR
22	1	4503	HYD OIL SUCTION LINE TO FILTER
23	1	4504	HYD LINE-FILTER TO RH PUMP
24	1	4505	HYD LINE-PUMP TO PUMP
25	1	4506	RETURN LINE RH TO LH PUMP
26	1	4507	HYD OIL RETURN LINE
27	1	4508	3/8" NPT MAGNETIC DRAIN PLUG
28	4	7944	STR THRD CONN, 8 F50X-S
29	2	198042	1/4" LOCK WASHER
30	2	198079	3/8" USS FLAT WASHER

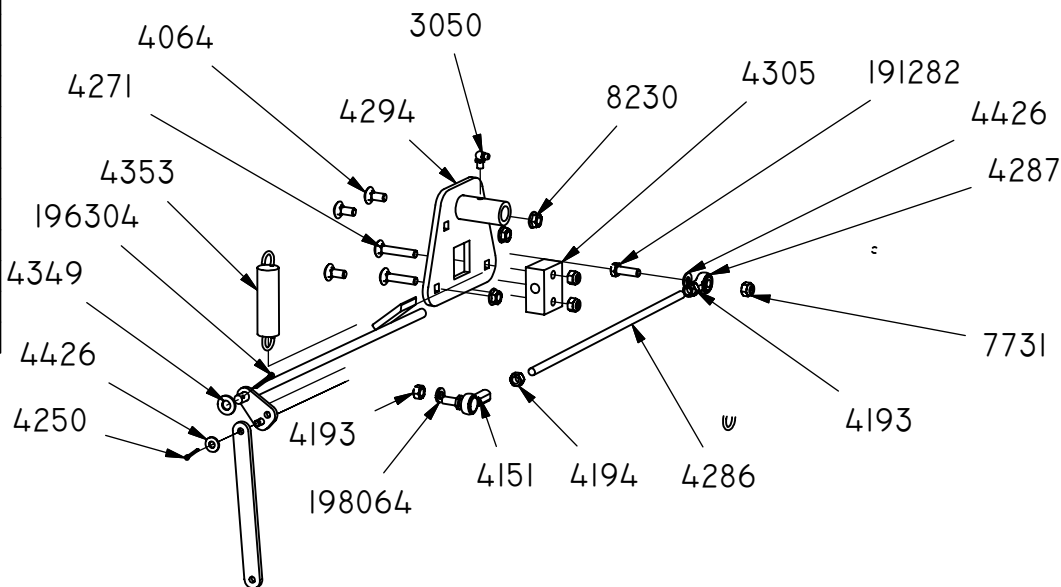
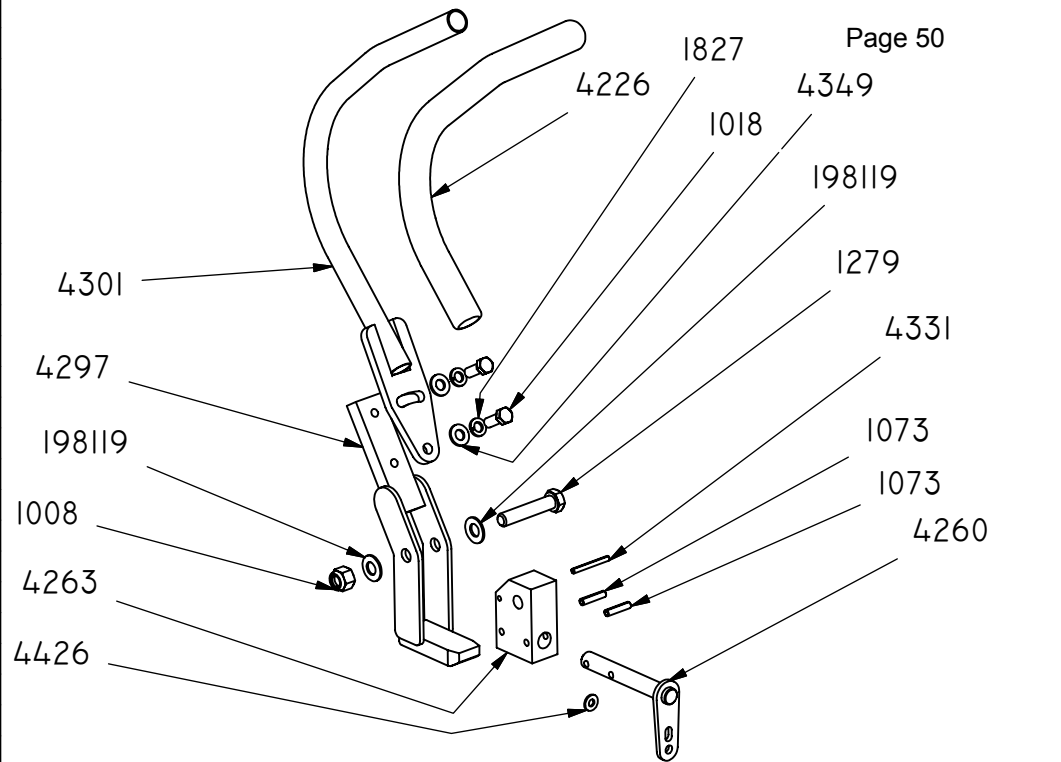
OIL TANK, FILTER, PLUMBING - 4408

2

1

## PARTS LIST

ITEM	QTY	PART N	DESCRIPTION
1	2	1008	1/2 STD NC NYLOCK NUT
2	4	1018	HEX CAP 3-8XI UNC
3	4	1073	1/4 X 1-1/8 ROLL PIN
4	2	1279	1/2 x 2-1/2 HEX CAP
5	4	1827	3/8" LOCK WASHER
6	2	3050	ZERK, 1/4-28 90 DEG.
7	6	4064	5/16 x 3/4 CARR BOLT
8	2	4151	5/16-24 NF ROD END W/ STUD, LH THD INSIDE ROD END
9	4	4193	5/16-24 UNF HEX NUT
10	2	4194	5/16-24 UNF LH HEX NUT
11	2	4208	5/16-18 UNC X 1-1/2 CARR BOLT
12	2	4226	FOAM GRIP,.875" x 17"
13	2	4250	3/32 x 1/2 COTTER PIN
14	2	4260	CONTROL SHAFT WELDMENT
15	2	4263	CONTROL ARM BLOCK
16	2	4271	5/16-18 x 1.75 CARR BOLT
17	2	4286	5/16-24 LH/RH ADJUSTMENT ROD - 12.50" OAL
18	2	4287	5/16-24 RH SPHERICAL ROD END
19	1	4289	RH BRAKE ACTUATOR WELDMENT
20	1	4292	LH BRAKE ACTUATOR WELDMENT
21	2	4294	CONTROL LEVER MOUNT
22	2	4297	CONTROL WELDMENT
23	2	4301	CONTROL HANDLE WELDMENT
24	2	4304	BRAKE LINKAGE
25	2	4305	BEARING BLOCK FOR BRAKE ROD
26	2	4331	3/16 x 1.75 ROLL PIN
27	6	4349	3/8 SAE FLAT WASHER
28	2	4353	PUMP DRIVE IDLER SPRING
29	2	4426	1/4" SAE FLAT WASHER
30	6	7731	5/16 STD NC NYLOCK NUT
31	6	8230	5/16-18NC SERR FLANGE ZP
32	2	191282	5-16XI UNC HEX CAP
33	2	196304	1/8 X 3/4 COTTER PIN
34	2	198064	5/16" LOCK WASHER
35	4	198119	1/2 X .070 BELLEVILLE WASHER



4292

4289

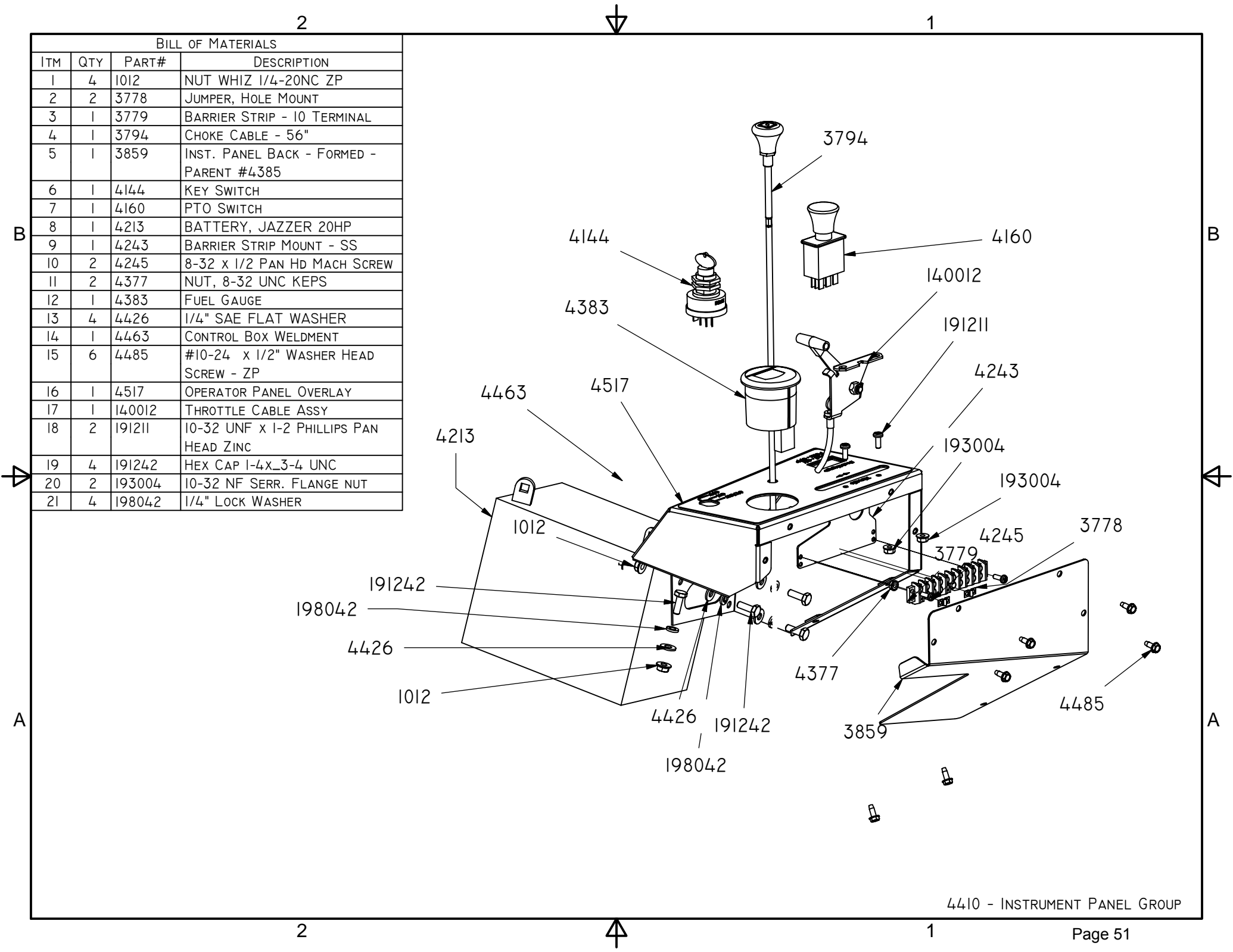
4304

JAZZER CONTROL GROUP - 4409

2

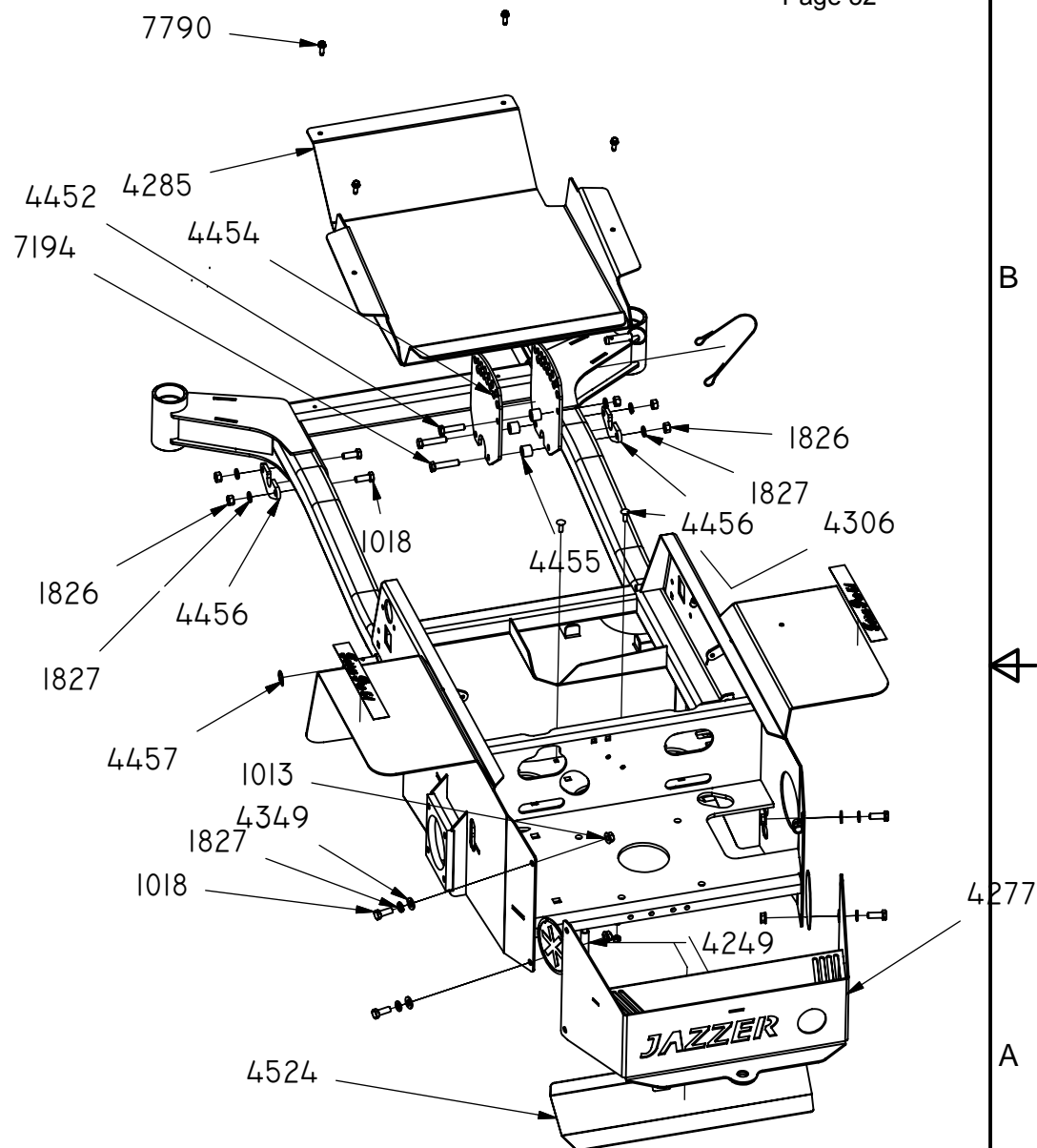
1

Page 50



BILL OF MATERIALS			
ITM	QTY	PART#	DESCRIPTION
1	4	1012	NUT WHIZ 1/4-20NC ZP
2	2	3778	JUMPER, HOLE MOUNT
3	1	3779	BARRIER STRIP - 10 TERMINAL
4	1	3794	CHOKE CABLE - 56"
5	1	3859	INST. PANEL BACK - FORMED - PARENT #4385
6	1	4144	KEY SWITCH
7	1	4160	PTO SWITCH
8	1	4213	BATTERY, JAZZER 20HP
9	1	4243	BARRIER STRIP MOUNT - SS
10	2	4245	8-32 x 1/2 PAN HD MACH SCREW
11	2	4377	NUT, 8-32 UNC KEPS
12	1	4383	FUEL GAUGE
13	4	4426	1/4" SAE FLAT WASHER
14	1	4463	CONTROL BOX WELDMENT
15	6	4485	#10-24 x 1/2" WASHER HEAD SCREW - ZP
16	1	4517	OPERATOR PANEL OVERLAY
17	1	140012	THROTTLE CABLE ASSY
18	2	191211	10-32 UNF x 1-2 PHILLIPS PAN HEAD ZINC
19	4	191242	HEX CAP 1-4x_3-4 UNC
20	2	193004	10-32 NF SERR. FLANGE NUT
21	4	198042	1/4" LOCK WASHER

PARTS LIST			
ITEM	QTY	PART NUMBE	DESCRIPTION
1	4	1013	NUT SERR FLANGE 3/8-16NC ZP
2	6	1018	Hex CAP 3-8x1 UNC
3	2	1058	ZERK, 1/4-28 STRAIGHT
4	5	1826	3/8-16 UNC HEX NUT
5	9	1827	3/8" LOCK WASHER
6	4	3625	1/4-20 HEX NUT
7	1	3781	LOOM CLAMP 1/2 DIA - 3/8 MOUNT
8	2	3797	TERRA PRO 5I STICKER
9	1	3867	LOOM CLAMP 1/2 DIA - 1/4" MOUNT
10	2	3978	BLADE LOGO 4" ROUND
11	2	4060	1/4 x 1 CARR BOLT
12	2	4063	1/4-20 x 3/4 CARR.BOLT
13	1	4249	BELT GAURD
14	1	4277	REAR GUARD
15	1	4285	FOOT PAN
16	1	4306	FRAME FOR JAZZER MOWER
17	4	4349	3/8 SAE FLAT WASHER
18	1	4452	HEX CAP 3-8x1-1-2 UNC
19	1	4454	DECK HT ADJUSTMENT PLATE, BOLT ON
20	3	4455	SPACER
21	2	4456	ROCKSHAFT HANGER
22	2	4457	EXTERNAL RETAINING RING SH-75
23	1	4458	1/2" x 1-1/4" BALL LOCK PIN
24	1	4524	HEAT SHIELD - PARENT #4523
25	2	7194	HEX CAP 3-8x1-3-4 UNC
26	4	7790	1/4 X 3/4 TAPPING SCREW
27	4	198042	1/4" LOCK WASHER



BILL OF MATERIALS				
ITM	QTY	PART#	DESCRIPTION	COMMENT
1	1	3747	WIRE ASSY-MAIN POWER & FUEL SENDER, JAZZER	NOT SHOWN
2	1	3748	WIRE ASSY-ENGINE(HONDA)/CLUTCH, JAZZER	NOT SHOWN
3	1	3749	WIRE ASSY-KEY SWITCH, JAZZER	NOT SHOWN
4	1	3750	WIRE ASSY-FUEL GAUGE	NOT SHOWN
5	1	3751	WIRE ASSY-DECK SWITCH, JAZZER	NOT SHOWN
6	1	3752	WIRE ASSY-RELAY, FOR JAZZER	NOT SHOWN
7	1	3753	WIRE ASSY-CONTROL BOX GRND WIRE, JAZZER	NOT SHOWN
8	1	4481	#4 GROUND CABLE 8" - 3/8 LUGS	
9	1	4482	#4 GROUND CABLE 40" - 3/8 LUGS	

