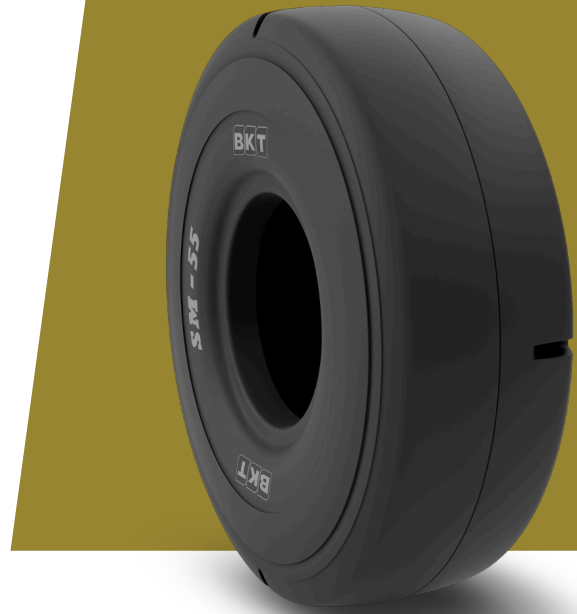


# SM 55 L5S

<b>TIRE SIZE</b>	7.00 - 12
<b>UM</b>	IS STANDARD
<b>CONSTRUCTION</b>	❖ BIAS
<b>MACHINERY</b>	VEHICUL PENTRU EXPLOATARE MINIERĂ SUBTERANĂ / AUTOBASCULANTĂ CU PROFIL REDUS (LPDT)
<b>VERSION</b>	DUAL BEAD
<b>TIRE TYPE</b>	TT



## DIMENSIUNI IS STANDARD

<b>OD (MM)</b>	710	<b>PR</b>	16
<b>SLR (MM)</b>	323	<b>TRA CODE</b>	L5S
<b>RC (MM)</b>	2159		
<b>RIM REC</b>	5.00 S		

## LOAD CAPACITY (KG/TIRE)

<b>KM/H / BAR</b>	<b>10.00</b>
25	2240

Rolling Circumference & SLR values are at rated Load and inflation pressure. These values may vary at different Load and pressure condition.