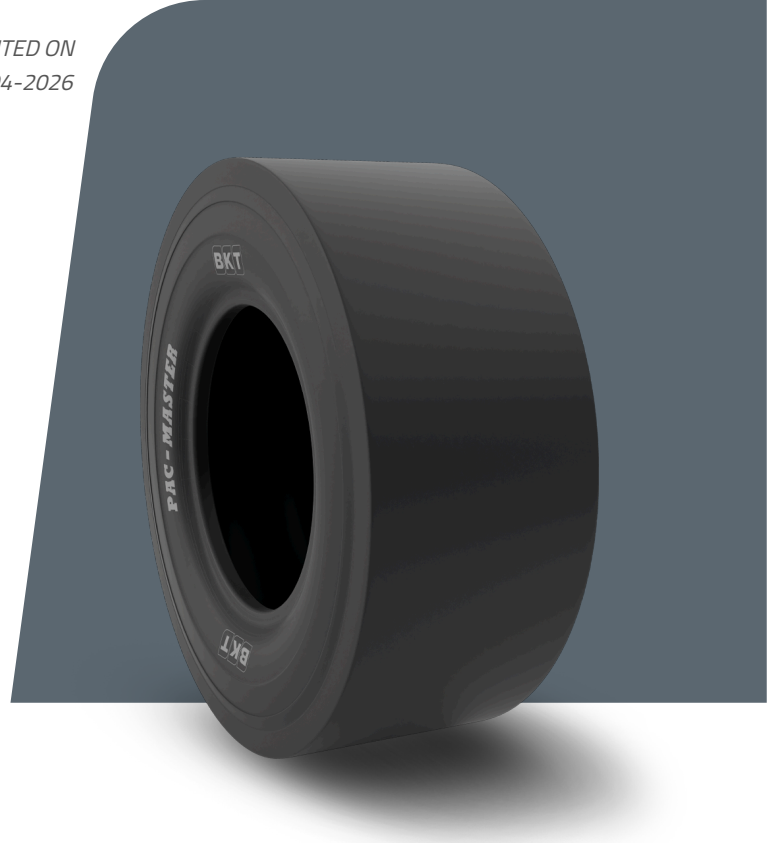


# PAC MASTER

<b>TIRE SIZE</b>	11.00 - 20
<b>UM</b>	IS STANDARD
<b>CONSTRUCTION</b>	BIAS
<b>MACHINERY</b>	COMPACTOR
<b>VERSION</b>	SPECIAL
<b>TIRE TYPE</b>	TT



## DIMENSIUNI IS STANDARD

<b>SW (MM)</b>	291	<b>RIM REC</b>	8.0
<b>OD (MM)</b>	1070	<b>RIM ALT</b>	8.5
<b>SLR (MM)</b>	494	<b>ECE</b>	E11-106R-006177
<b>RC (MM)</b>	3310	<b>PR</b>	18

## LOAD CAPACITY (KG/TIRE)

<b>KM/H / BAR</b>	<b>8.25</b>
10	5800
15	4625

Rolling Circumference & SLR values are at rated Load and inflation pressure. These values may vary at different Load and pressure condition.