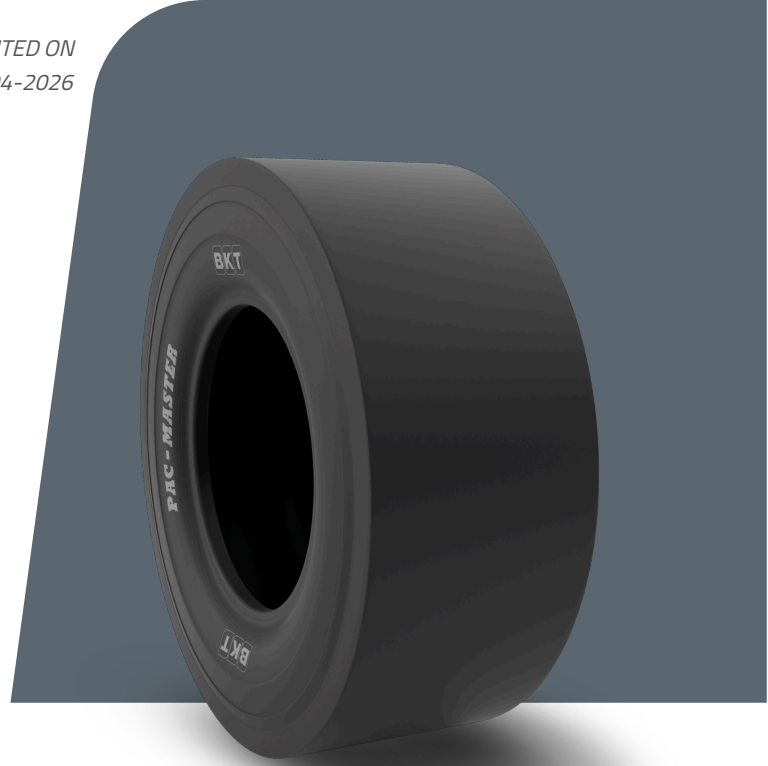


PAC MASTER

TIRE SIZE	9.00 - 20
UM	US STANDARD
CONSTRUCTION	BIAS
MACHINERY	УПЛОТНИТЕЛЬНАЯ ТЕХНИКА
VERSION	STANDARD
TIRE TYPE	TT



РАЗМЕРЫ US STANDARD

USA CODE	94002641	RC (IN)	122.3
SW (IN)	10.8	RIM REC	7.0
OD (IN)	40.0	RIM ALT	7.5
SLR (IN)	18.5	ECE	E11-106R-005359

LOAD CAPACITY (LBS/TIRE)

MPH / PSI	105
5	9650
10	7610

Rolling Circumference & SLR values are at rated Load and inflation pressure. These values may vary at different Load and pressure condition.