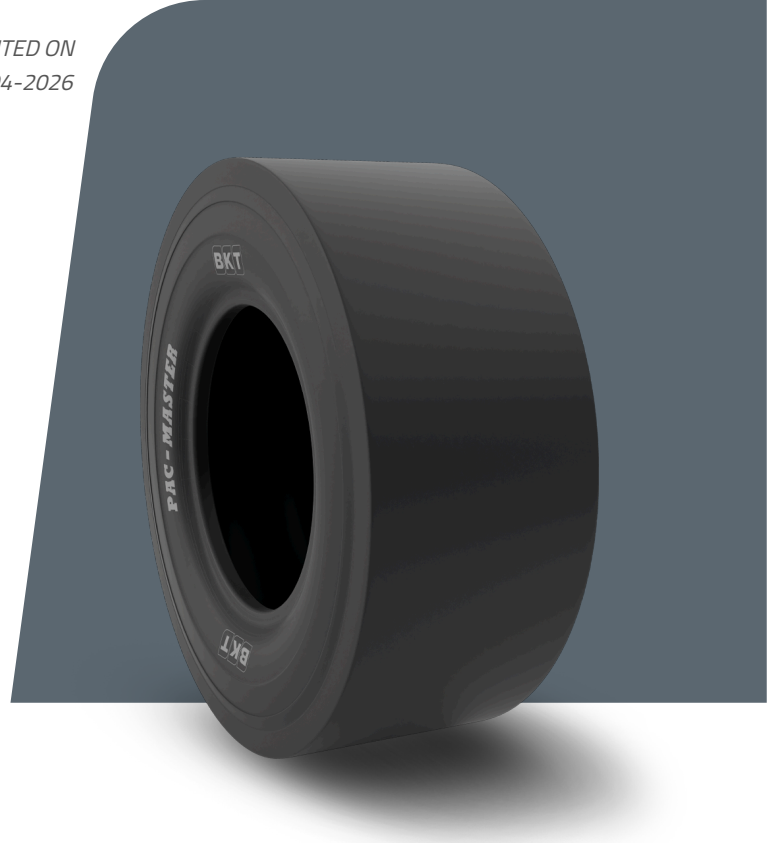


PAC MASTER

TIRE SIZE	9.00 - 20
UM	IS STANDARD
CONSTRUCTION	▣ BIAS
MACHINERY	COMPACTOR
VERSION	STANDARD
TIRE TYPE	TT



DIMENSIUNI IS STANDARD

SW (MM)	275	RIM REC	7.0
OD (MM)	1016	RIM ALT	7.5
SLR (MM)	471	ECE	E11-106R-005360
RC (MM)	3107	PR	16

LOAD CAPACITY (KG/TIRE)

KM/H / BAR	8.25
10	4750
15	3750

Rolling Circumference & SLR values are at rated Load and inflation pressure. These values may vary at different Load and pressure condition.