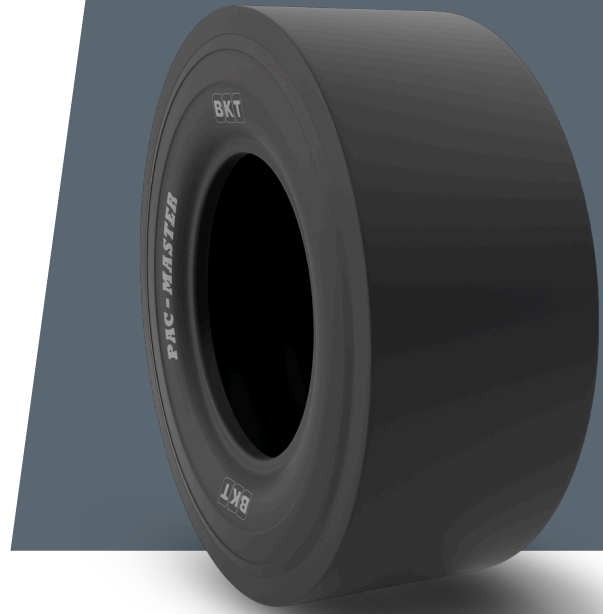


PAC MASTER

10.5/80 - 16

UM	IS STANDARD
CONSTRUCTION	❖ BIAS
MACHINERY	KOMPAKTÖR
VERSION	STANDARD
TIRE TYPE	TL



UNDEFINED IS STANDARD

SW (MM)	275	RIM REC	8.0
OD (MM)	810	ECE	E11-106R-004647
SLR (MM)	382	PR	14
RC (MM)	2480		

LOAD CAPACITY (KG/TIRE)

KM/H / BAR	6.00
10	2775
15	2250

Rolling Circumference & SLR values are at rated Load and inflation pressure. These values may vary at different Load and pressure condition.