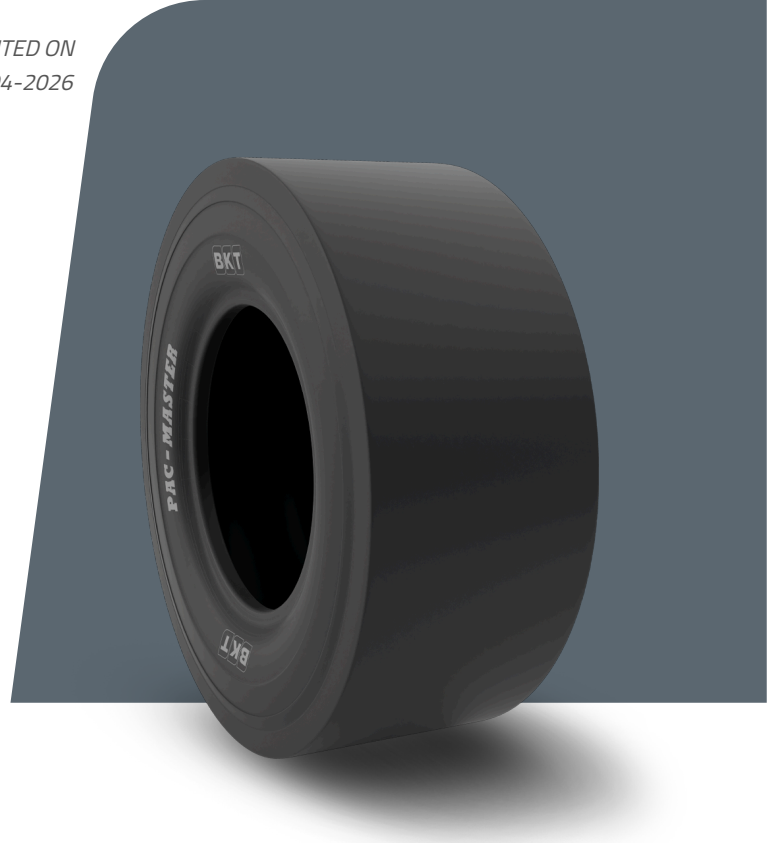


PAC MASTER

TIRE SIZE	11.00 - 20
UM	IS STANDARD
CONSTRUCTION	❖ BIAS
MACHINERY	KOMPAKTFORDON
VERSION	SPECIAL
TIRE TYPE	TT



DIMENSIONER IS STANDARD

SW (MM)	291	RIM REC	8.0
OD (MM)	1070	RIM ALT	8.5
SLR (MM)	494	ECE	E11-106R-006177
RC (MM)	3310	PR	18

LOAD CAPACITY (KG/TIRE)

KM/H / BAR	8.25
10	5800
15	4625

Rolling Circumference & SLR values are at rated Load and inflation pressure. These values may vary at different Load and pressure condition.