
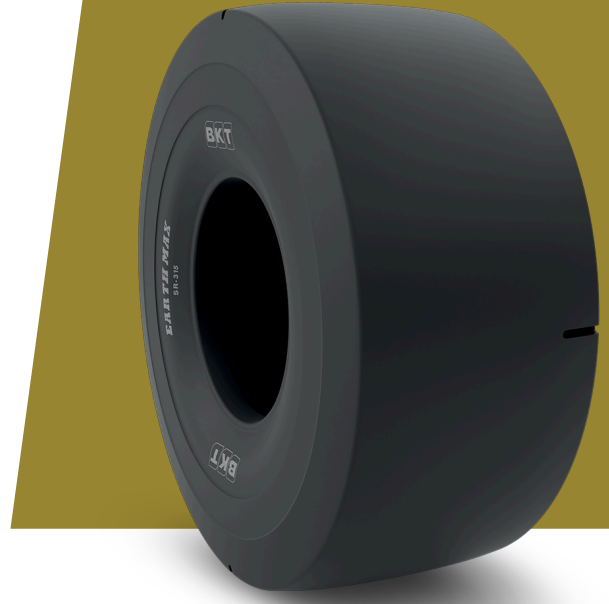


EARTHMAX SR 315

26.5 R 29

UM	IS STANDARD
CONSTRUCTION	 RADIAL
MACHINERY	YÜK TAŞIMA DAMPERİ (LHD)
VERSION	CUT RESISTANT COMPOUND
TIRE TYPE	TL
	211 A2



UNDEFINED IS STANDARD

OD (MM)	1865	TRA CODE	L3S
SLR (MM)	830	STAR RATING	★★
RC (MM)	5635		
RIM REC	22.00/3.0		

LOAD CAPACITY (KG/TIRE)

KM/H / BAR	5.25	5.50	5.75	6.00	6.25	6.50
10	16500	17500	18000	18500	19000	19500

Rolling Circumference & SLR values are at rated Load and inflation pressure. These values may vary at different Load and pressure condition.