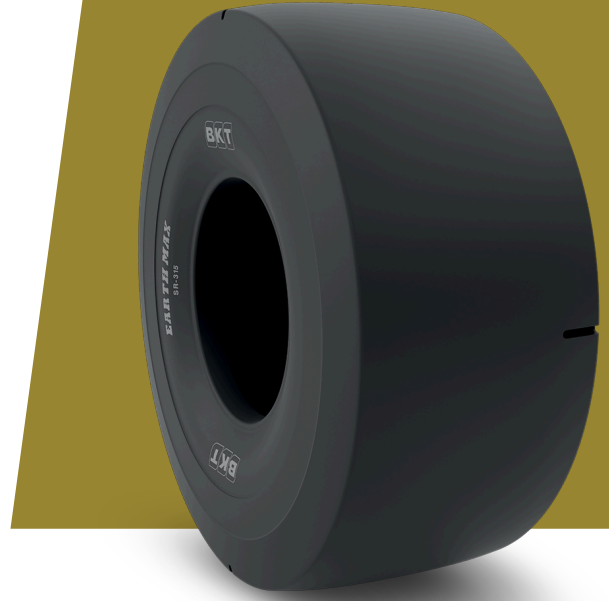


# EARTHMAX SR 315

**26.5 R 29**

<b>UM</b>	IS STANDARD
<b>CONSTRUCTION</b>	 RADIAL
<b>MACHINERY</b>	YÜK TAŞIMA DAMPERİ (LHD)
<b>VERSION</b>	CUT RESISTANT COMPOUND
<b>TIRE TYPE</b>	TL
	217 A2



## UNDEFINED IS STANDARD

<b>OD (MM)</b>	1865	<b>TRA CODE</b>	L3S
<b>SLR (MM)</b>	830	<b>STAR RATING</b>	★★★
<b>RC (MM)</b>	5635		
<b>RIM REC</b>	22.00/3.0		

## LOAD CAPACITY (KG/TIRE)

KM/H / BAR	6.75	7.00	7.25	7.50	7.75	8.00
10	20000	20600	21200	21800	22400	23000

Rolling Circumference & SLR values are at rated Load and inflation pressure. These values may vary at different Load and pressure condition.