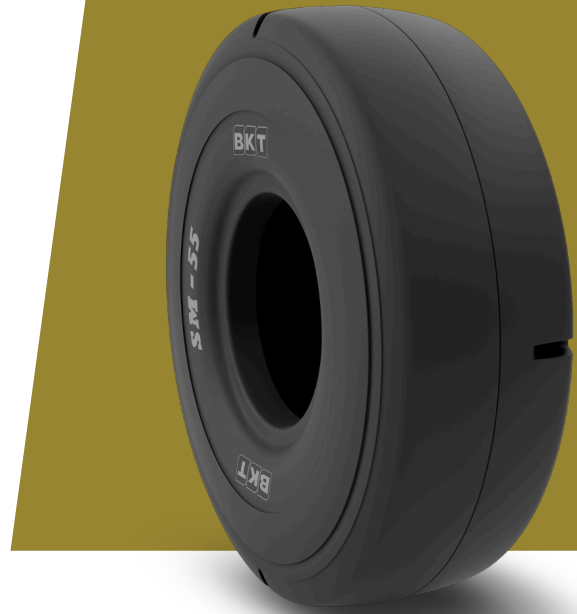


SM 55 L5S

TIRE SIZE	29.5 - 29
UM	US STANDARD
CONSTRUCTION	BIAS
MACHINERY	UNDERJORDISKT GRUVFORDON / DUMPER MED LÅGPROFIL
VERSION	STEEL BELTED
TIRE TYPE	TL



DIMENSIONER US STANDARD

USA CODE	94040407	RIM REC	25.00/3.5
OD (IN)	79.5	RIM ALT	24.00/3.5
SLR (IN)	34.7	PR	28
RC (IN)	237.0	TRA CODE	L5S

LOAD CAPACITY (LBS/TIRE)

MPH / PSI	62
5	41900
10	36400
15	33500

Rolling Circumference & SLR values are at rated Load and inflation pressure. These values may vary at different Load and pressure condition.