
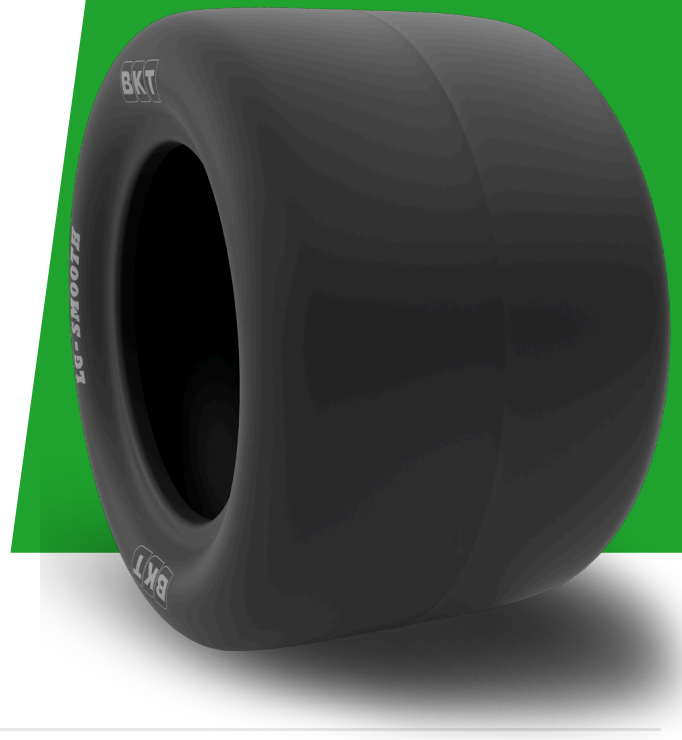


LG SMOOTH

TYRE SIZE	16X6.50 - 8
UM	IS STANDARD
CONSTRUCTION	 BIAS
MACHINERY	TRACTOR
VERSION	ARAMID BELTED
TYRE TYPE	TL



DIMENSIONS IS STANDARD

SW (MM)	160
OD (MM)	400
RIM REC	5.375 I - 55; I - 70; I - 90
PR	10

LOAD CAPACITY (KG/TYRE)

KM/H / BAR	4.90
15	470

Rolling Circumference & SLR values are at rated Load and inflation pressure. These values may vary at different Load and pressure condition.