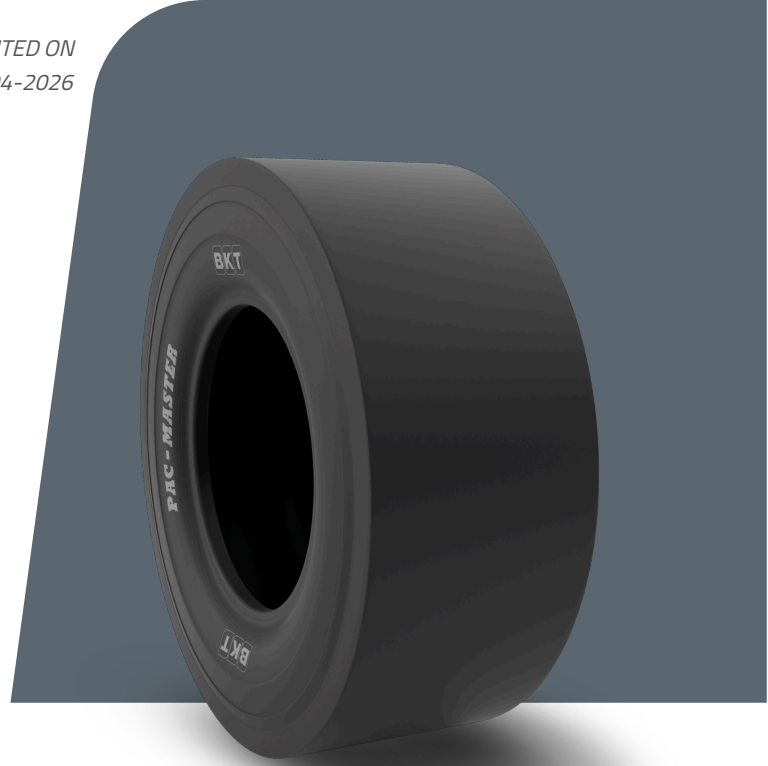


PAC MASTER

TIRE SIZE	11.00 - 20
UM	US STANDARD
CONSTRUCTION	BIAS
MACHINERY	УПЛОТНИТЕЛЬНАЯ ТЕХНИКА
VERSION	SPECIAL
TIRE TYPE	TT



РАЗМЕРЫ US STANDARD

USA CODE	94067169	RC (IN)	130.3
SW (IN)	11.5	RIM REC	8.0
OD (IN)	42.1	RIM ALT	8.5
SLR (IN)	19.4	ECE	E11-106R-006177

LOAD CAPACITY (LBS/TIRE)

MPH / PSI	120
5	12800
10	10200

Rolling Circumference & SLR values are at rated Load and inflation pressure. These values may vary at different Load and pressure condition.