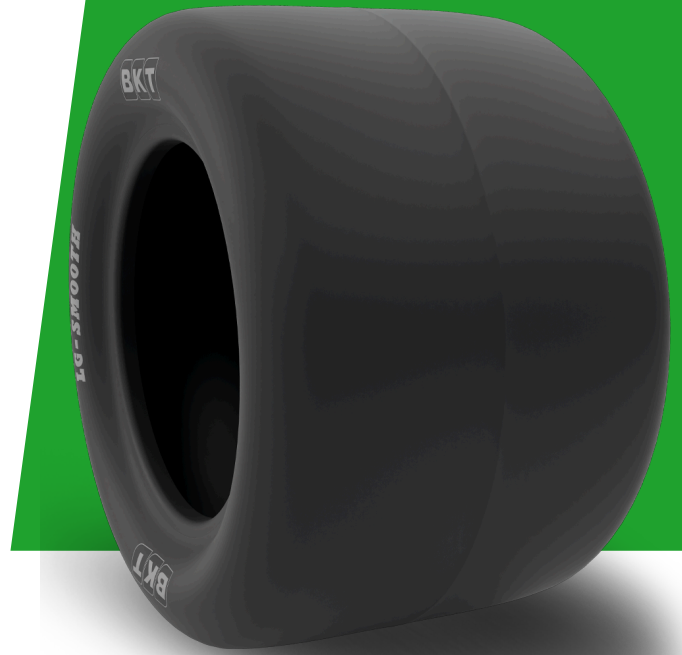


# LG SMOOTH

TIRE SIZE	18X10.50 - 10
UM	US STANDARD
CONSTRUCTION	BIAS
MACHINERY	MAQUINA DE CORTAR RELVA / TRATOR PEQUENO / TRATOR
VERSÃO	STANDARD
TIRE TYPE	TL



## DIMENSÕES US STANDARD

CÓDIGO USA	94013050	RC (IN)	52.5
SW (IN)	10.0	RIM REC	8.5 I - 55; I - 70; I - 90
OD (IN)	18.1	RIM ALT	8½ JA
SLR (IN)	8.1	ECE	E11-106R-005203

## LOAD CAPACITY (LBS/TIRE)

MPH / PSI	12
10	735

Rolling Circumference & SLR values are at rated Load and inflation pressure. These values may vary at different Load and pressure condition.