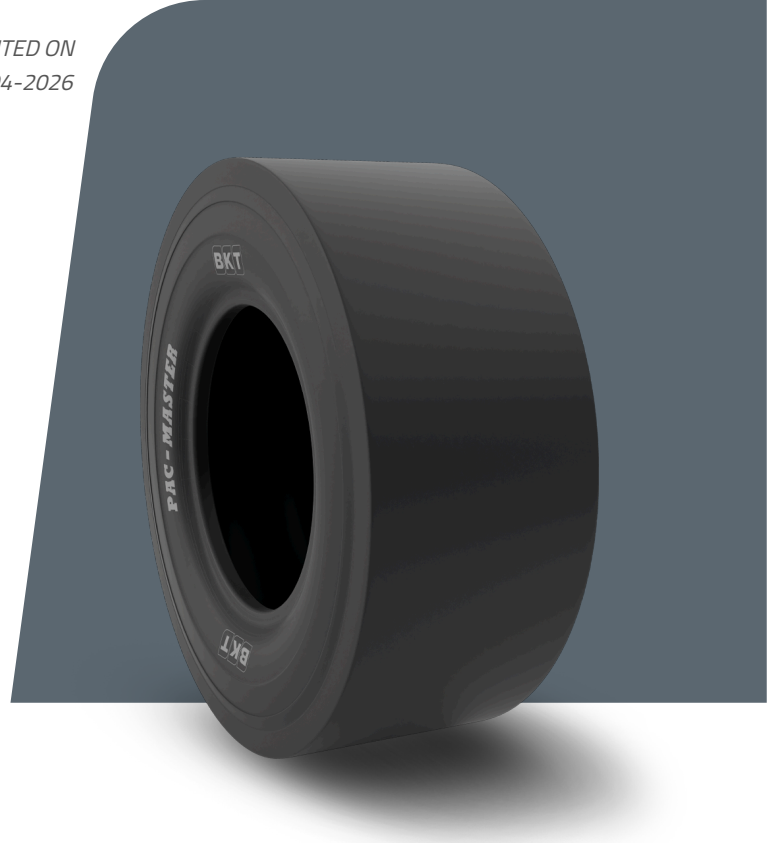


PAC MASTER

TIRE SIZE	9.00 - 20
UM	IS STANDARD
CONSTRUCTION	BIAS
MACHINERY	УПЛОТНИТЕЛЬНАЯ ТЕХНИКА
VERSION	STANDARD
TIRE TYPE	TT



РАЗМЕРЫ IS STANDARD

SW (MM)	275	RIM REC	7.0
OD (MM)	1016	RIM ALT	7.5
SLR (MM)	471	ECE	E11-106R-005359
RC (MM)	3107	PR	14

LOAD CAPACITY (KG/TIRE)

KM/H / BAR	7.25
10	4375
15	3450

Rolling Circumference & SLR values are at rated Load and inflation pressure. These values may vary at different Load and pressure condition.