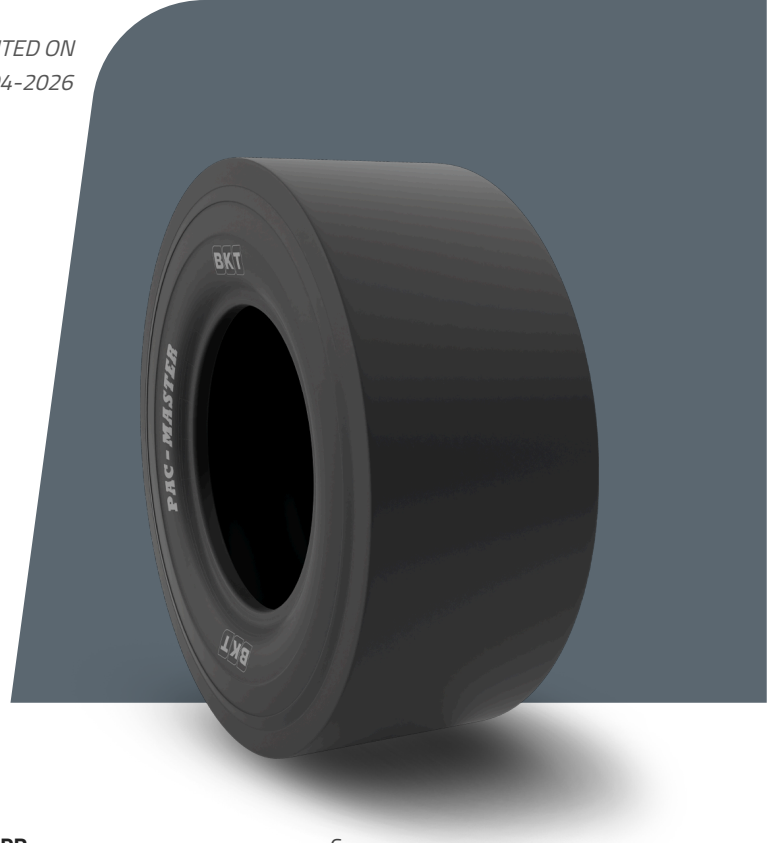


PAC MASTER

TIRE SIZE	205/60 - 15
UM	IS STANDARD
CONSTRUCTION	
MACHINERY	COMPACTOR
VERSION	STANDARD
TIRE TYPE	TL



DIMENSIONS IS STANDARD

SW (MM)	200	PR	6
OD (MM)	640		
RIM REC	6.0 J		
RIM ALT	7.0 J		

LOAD CAPACITY (KG/TIRE)

KM/H / BAR	3.25
10	1060
15	850

Rolling Circumference & SLR values are at rated Load and inflation pressure. These values may vary at different Load and pressure condition.