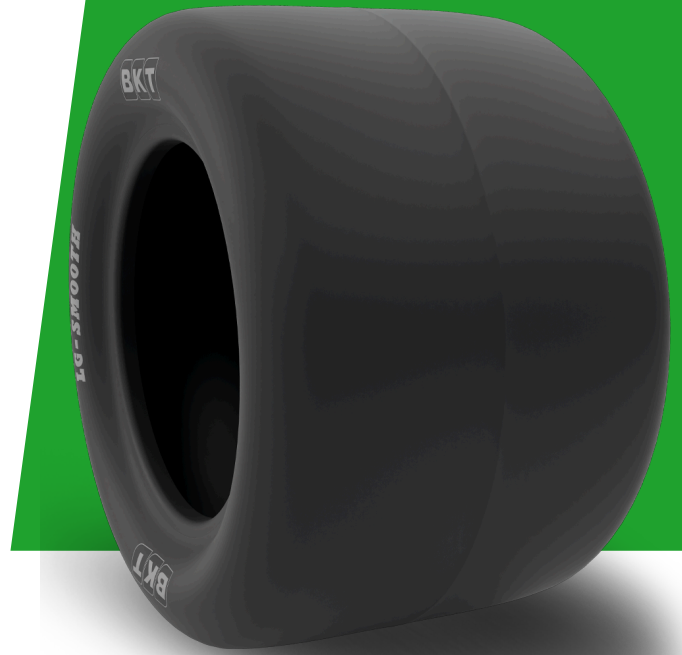


# LG SMOOTH

TIRE SIZE	20X10.00 - 10
UM	US STANDARD
CONSTRUCTION	BIAS
MACHINERY	MAQUINA DE CORTAR RELVA / TRATOR PEQUENO / TRATOR
VERSÃO	STANDARD
TIRE TYPE	TL



## DIMENSÕES US STANDARD

CÓDIGO USA	94013043	RC (IN)	57.1
SW (IN)	9.6	RIM REC	8.00   - 55
OD (IN)	19.7	RIM ALT	7.00   - 55;   - 70;   - 90
SLR (IN)	8.8	ECE	E11-106R-005202

## LOAD CAPACITY (LBS/TIRE)

MPH / PSI	32
10	1455

Rolling Circumference & SLR values are at rated Load and inflation pressure. These values may vary at different Load and pressure condition.