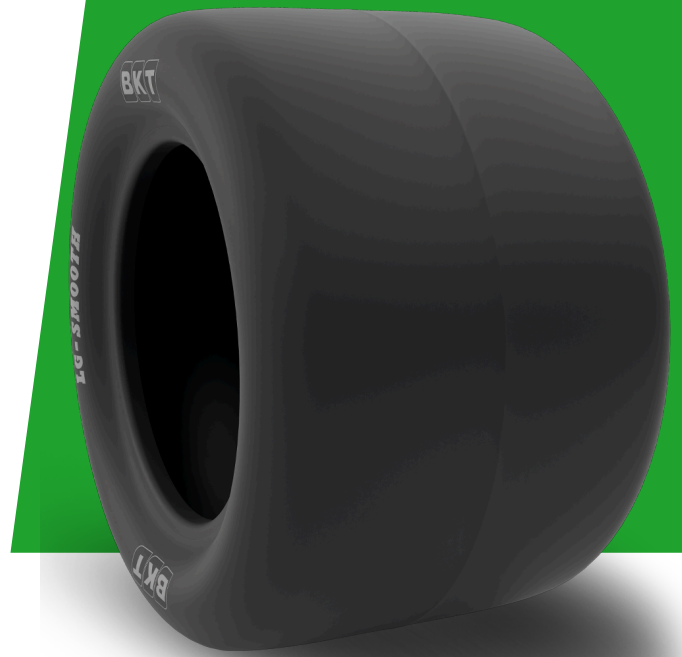


LG SMOOTH

TIRE SIZE	20X10.00 - 10
UM	US STANDARD
CONSTRUCTION	⊠ BIAS
MACHINERY	FAUCHEUSE / MICRO TRACTEUR / TRACTEUR
VERSION	STANDARD
TIRE TYPE	TL



DIMENSIONS US STANDARD

CODE USA	94013043	RC (IN)	57.1
SW (IN)	9.6	RIM REC	8.00 - 55
OD (IN)	19.7	RIM ALT	7.00 - 55; - 70; - 90
SLR (IN)	8.8	ECE	E11-106R-005202

LOAD CAPACITY (LBS/TIRE)

MPH / PSI	32
10	1455

Rolling Circumference & SLR values are at rated Load and inflation pressure. These values may vary at different Load and pressure condition.