
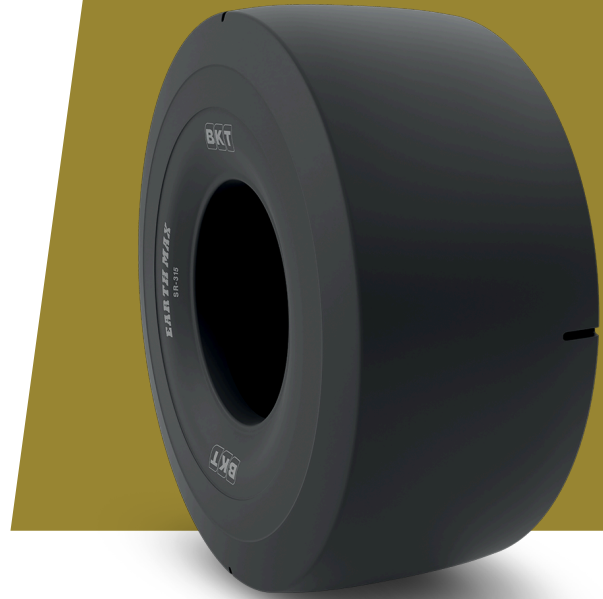


EARTHMAX SR 315

TIRE SIZE	26.5 R 29
UM	US STANDARD
CONSTRUCTION	 RADIAL
MACHINERY	ПОГРУЗОЧНО-ДОСТАВОЧНАЯ МАШИНА
VERSION	CUT RESISTANT COMPOUND
TIRE TYPE	TL
LI/SS	217 A2



РАЗМЕРЫ US STANDARD

USA CODE	94070787	RIM REC	22.00/3.0
OD (IN)	73.4	TRA CODE	L3S
SLR (IN)	32.7	STAR RATING	★★★
RC (IN)	221.9		

LOAD CAPACITY (LBS/TIRE)

MPH / PSI	98	102	105	109	112	116
5	44100	45400	46700	48100	49400	50700

Rolling Circumference & SLR values are at rated Load and inflation pressure. These values may vary at different Load and pressure condition.