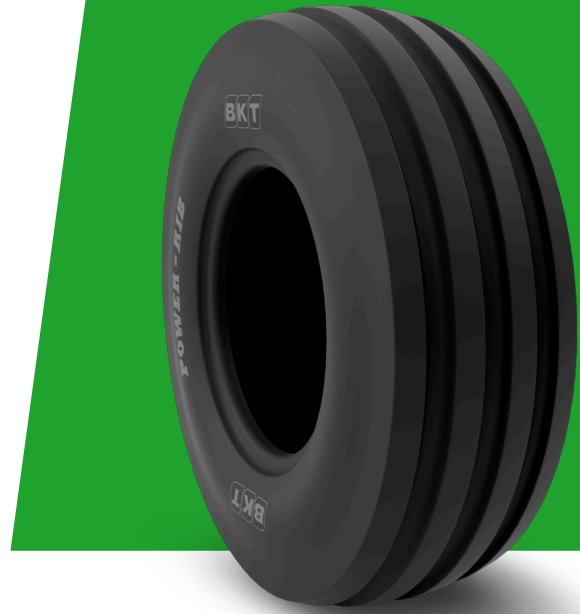


POWER RIB F2

11L - 15 SL

| | |
|---------------------|-----------------------------|
| UM | US STANDARD |
| CONSTRUCTION | BIAS |
| MACHINERY | TEK ÇEKER TRAKTÖR / TRAKTÖR |
| VERSION | STANDARD |
| TIRE TYPE | TL |
| | 106 A8 |



UNDEFINED US STANDARD

| | | | |
|-----------------|----------|----------------|-----------------|
| USA CODE | 94020430 | RC (IN) | 95.4 |
| SW (IN) | 11.0 | RIM REC | 8 LB |
| OD (IN) | 32.0 | RIM ALT | 10 LB |
| SLR (IN) | 14.7 | ECE | E11-106R-004652 |

LOAD CAPACITY (LBS/TIRE)

| | |
|------------------|-----------|
| MPH / PSI | 44 |
| 25 | 2090 |

Rolling Circumference & SLR values are at rated Load and inflation pressure. These values may vary at different Load and pressure condition.