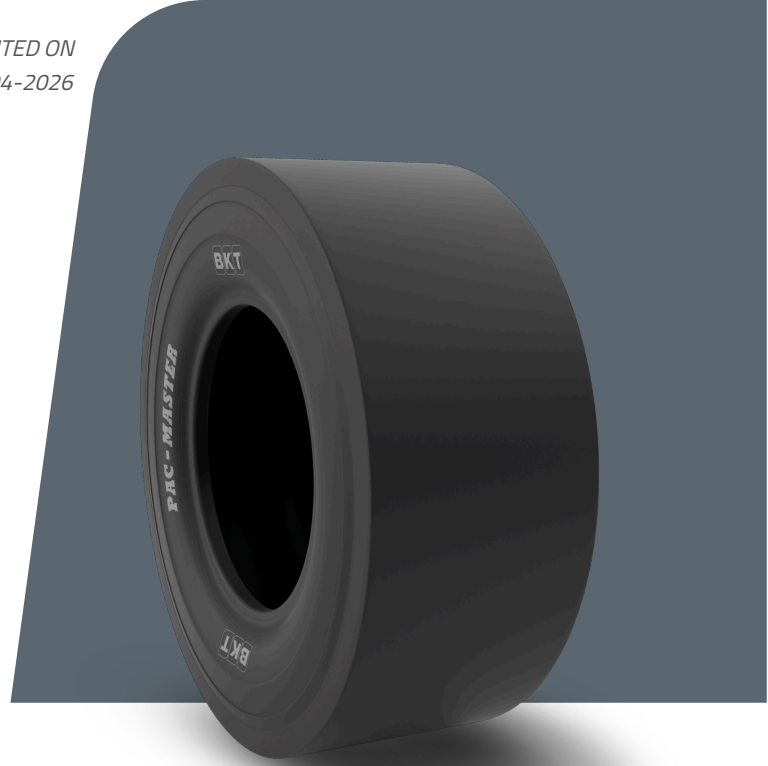


PAC MASTER

| | |
|---------------------|---------------|
| TIRE SIZE | 11.00 - 20 |
| UM | US STANDARD |
| CONSTRUCTION | BIAS |
| MACHINERY | KOMPAKTFORDON |
| VERSION | SPECIAL |
| TIRE TYPE | TT |



DIMENSIONER US STANDARD

| | | | |
|-----------------|----------|----------------|-----------------|
| USA CODE | 94067169 | RC (IN) | 130.3 |
| SW (IN) | 11.5 | RIM REC | 8.0 |
| OD (IN) | 42.1 | RIM ALT | 8.5 |
| SLR (IN) | 19.4 | ECE | E11-106R-006177 |

LOAD CAPACITY (LBS/TIRE)

| MPH / PSI | 120 |
|------------------|------------|
| 5 | 12800 |
| 10 | 10200 |

Rolling Circumference & SLR values are at rated Load and inflation pressure. These values may vary at different Load and pressure condition.